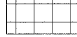
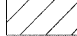



F.A.U. RTE.	SECTION	COUNTY	TOTAL SHEETS	SHEET NO.
2578	532B-1	DU PAGE	117	81
STA.	156+00	TO STA.	171+00	
FED. ROAD DIST. NO.	ILLINOIS	FED. AID PROJECT		

CONTRACT #62881

**LEGEND:**

-  PRESTAGE EMBANKMENT/WICK DRAIN INSTALLATION
-  STAGE 1 EMBANKMENT/WICK DRAIN INSTALLATION
-  STAGE 2 EMBANKMENT/WICK DRAIN INSTALLATION

**WICK DRAIN INSTALLATION (UNDER EMBANKMENTS AND WIDENINGS)**

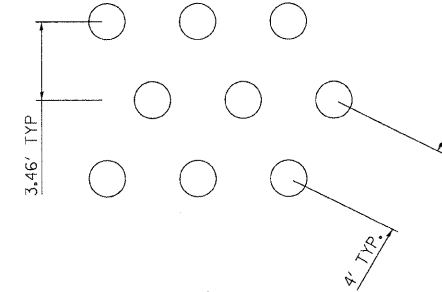
- ① LIMITS: STA. 156+00 TO STA. 157+35  
SPACING: 4 FT  
APPROX TIP ELEV: 672.5  
APPROX SETTLEMENT TIME = 2 MONTHS  
APPROX SETTLEMENT = 5 TO 10 IN

**WICK DRAIN INSTALLATION (FULL WIDTH)**

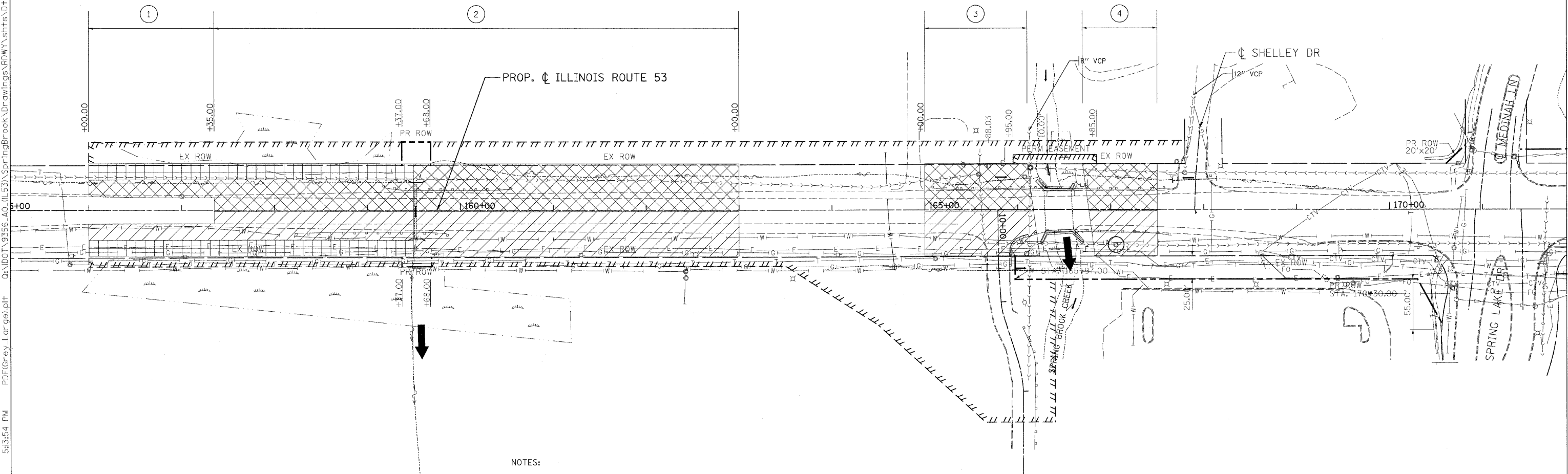
- ② LIMITS: STA. 157+35 TO STA. 163+00  
SPACING: 4 FT  
APPROX TIP ELEV: 660.0  
APPROX SETTLEMENT TIME = 2 MONTHS  
APPROX SETTLEMENT = 5 TO 10 IN
- ③ LIMITS: STA. 165+00 TO BRIDGE  
SPACING: 4 FT  
APPROX TIP ELEV: 675.0  
APPROX SETTLEMENT TIME = 2 MONTHS  
APPROX SETTLEMENT = 3 IN
- ④ LIMITS: BRIDGE TO STA. 167+50  
SPACING: 4 FT  
APPROX TIP ELEV: 665.0  
APPROX SETTLEMENT TIME = 2 MONTHS  
APPROX SETTLEMENT = 3 IN

**WICK DRAIN LAYOUT DETAIL**

(EQUILATERAL TRIANGLE PATTERN)



tkceppen(Roway\_L1) 6/10/2009 5:13:54 PM PDF(Grey\_Lor) 6/10/2009 5:13:54 PM PDF(Grey\_Lor) 6/10/2009 5:13:54 PM



**NOTES:**

1. SEE THE SPECIAL PROVISIONS AND ROADWAY GEOTECHNICAL REPORT. THE ROADWAY GEOTECHNICAL REPORT IS AVAILABLE UPON REQUEST, CONTACT THE DISTRICT GEOTECHNICAL ENGINEER.
2. DRAINAGE BLANKETS CONSISTING OF A 1-FOOT FA-1 OR FA-2 POROUS GRANULAR EMBANKMENT MATERIAL, PER SECTIONS 1003.04 PR 1004.06 OF THE STANDARD SPECIFICATIONS SHALL BE PLACED BEFORE THE WICK DRAINS ARE INSTALLED AND AN ADDITIONAL 1-FOOT PLACED AFTER THE WICK DRAINS ARE INSTALLED. THE DRAINAGE BLANKETS SHALL BE INCLUDED IN THE COST OF THE EMBANKMENT.
3. DRAINAGE BLANKETS SHALL BE PLACED AT BOTH THE EXISTING ROADWAY GRADE AS WELL AS THE ELEVATION (S) OF THE TOES OF THE EMBANKMENT SLOPES FROM STA. 156+00 TO STA. 159+52.
4. CARE SHALL BE TAKEN NOT TO CONTAMINATE THE DRAINAGE BLANKETS DURING WICK DRAIN INSTALLATION OR BY CONSTRUCTION TRAFFIC.
5. UNDERDRAINS SHALL BE PLACED EVERY 100-FEET WITHIN THE DRAINAGE BLANKETS TO DIRECT DRAINAGE FROM THE WICK DRAINS TO THE EDGE OF THE EMBANKMENTS.
6. THE GRANULAR DRAINAGE BLANKET LAYERS SHALL BE CAPPED WHERE THEY DAYLIGHT ALONG THE EMBANKMENT SLOPE WITH A TYPICAL CLAY FILL, WHILE STILL ALLOWING THE UNDERDRAINS TO EXIT THE EMBANKMENT.
7. IF THE WICK DRAINS WILL BE IN PLACE DURING THE WINTER MONTHS, PROVIDE A PROTECTIVE LAYER (18" MINIMUM OF COHESIVE OR 12" MINIMUM OF GRANULAR) OVER THE DRAINAGE BLANKET AND PIPE UNDERDRAINS.

REVISIONS	
NAME	DATE

ILLINOIS DEPARTMENT OF TRANSPORTATION  
ILLINOIS ROUTE 53 (FAU 2578)  
WICK DRAIN DETAIL

SCALE: VERT. 1"=5'  
HORIZ. 1"=50'  
DATE: 6/12/09

DRAWN BY: CPK  
CHECKED BY: JJC