

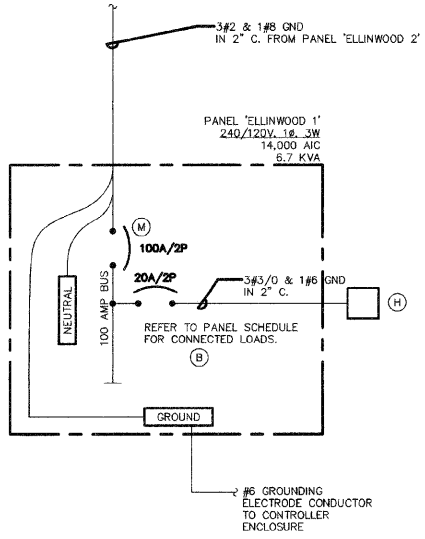
PANEL NAME: ELLINWOOD 1 CONNECTED 6.7 KVA

TYPE: BOLT-ON
 MOUNTING: SURFACE - INTERIOR ONLY
 FED FROM: PANEL 'ELLINWOOD 2'
 AIC RATING: 14,000

MAIN: 100A MCB
 VOLTS: 240/120
 PHASE: 1
 WIRE: 3

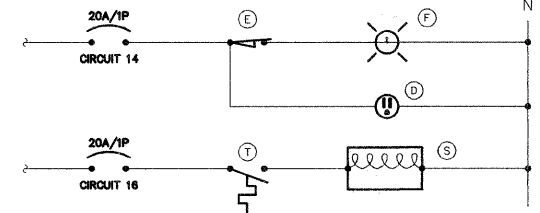
CKT NO.	LOAD DESCRIPTION	WIRE SIZE	LOAD KVA	BREAKER AMP	BREAKER P	LOAD KVA	WIRE SIZE	LOAD DESCRIPTION	CKT NO.	
1	A 1F2, 5F3	"S	1.7	20	2	20	1 0.8	"S X1 4 RECEPT.	2	
3						20	1 0.6	"S X2 3 RECEPT.	4	
5	B 1F2, 5F3	"S	1.7	20	2	20	1 0.6	"S Y1 3 RECEPT.	6	
7						20	1 0.4	"S Y2 2 RECEPT.	8	
9	SURGE ARRESTOR	"O	0.1	20	2	20	1	SPARE	10	
11						20	1	SPARE	12	
13	SPARE					20	2 20	1 0.3	12 LGT. RECEPT. IN CABINET	14
15						20	1 0.4	12 CABINET HEATER	16	
17	SPACE					20	1 0.1	12 LGT CONTROL	18	

NOTES: "S" = REFER TO SHEET E3 FOR WIRE SIZE. "O" = REFER TO ONE LINE DIAGRAM ON SHEET E7 FOR WIRE SIZE.

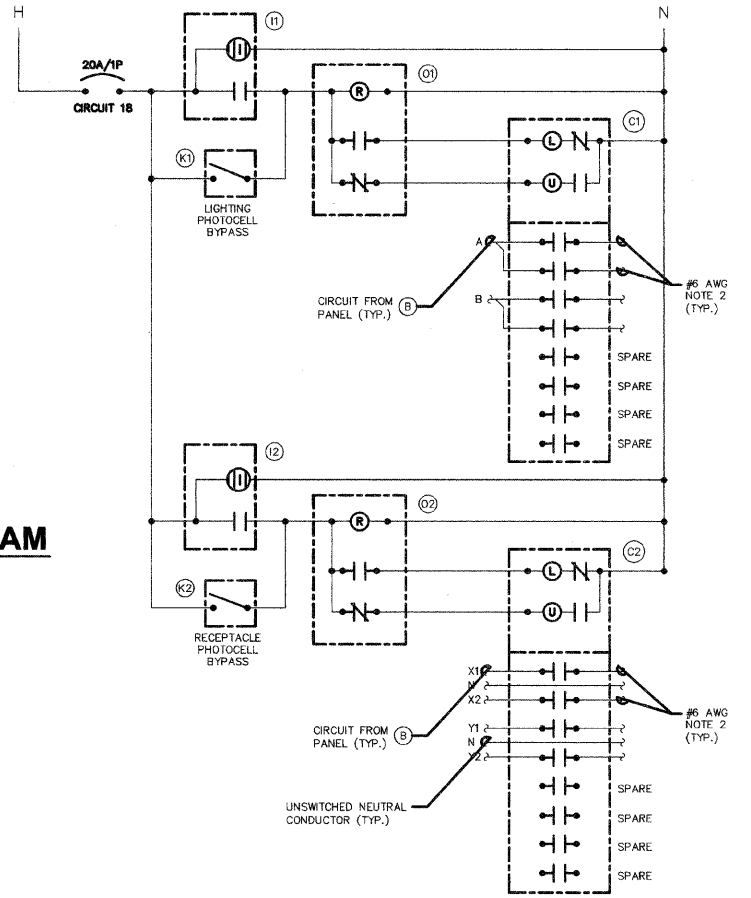


1 ONE LINE DIAGRAM ELLINWOOD 1
NO SCALE

- ONE-LINE DIAGRAM NOTES**
- AIC RATINGS LISTED FOR EQUIPMENT ARE MINIMUM REQUIREMENTS FOR BUS BRACING AND DEVICE RATING. ALL EQUIPMENT SHALL BE FULLY RATED UNLESS SPECIFICALLY NOTED AS SERIES RATED.
 - ALL FUSES FROM 0 AMPERE TO 200 AMPERE SHALL BE DUAL ELEMENT, CLASS RK-5 UNLESS NOTED OTHERWISE.
 - INDICATES DIRECT CONNECTION OF GROUND CONDUCTOR TO GROUND BUS.



3 CABINET ELEMENTARY DIAGRAM
NO SCALE

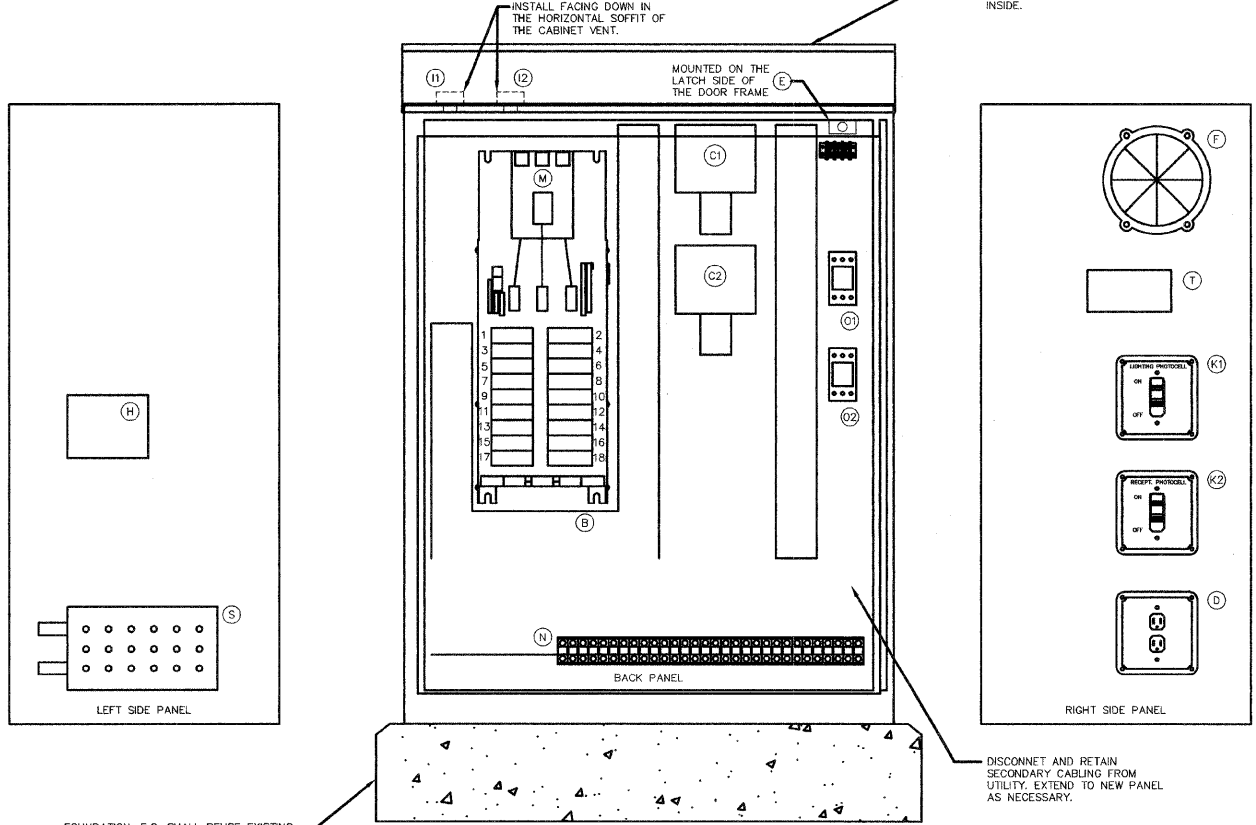


4 LIGHTING CONTROL ELEMENTARY DIAGRAM
NO SCALE

NOTES:
 1. ALL CABINET INTERIOR WIRING SHALL BE STRANDED COPPER #12 AWG THWN UNLESS NOTED OTHERWISE.
 2. ROUTE TO STREET LIGHTING LUMINAIRES VIA TERMINAL BLOCK.

BILL OF MATERIALS FOR LIGHTING CONTROLLER "E1"

ITEM #	QUANTITY	DESCRIPTION
B	1	BRANCH CIRCUIT PANEL INTERIOR, 100A COPPER BUS, 240/120 VOLT, MOLDED CASE THERMAL MAGNETIC CIRCUIT BREAKERS, BOLT ON TYPE, AIC RATING OF 14,000 AMPS AT 240 VOLTS, SQUARE D 1630-NQDD, G.E. A0, SIEMENS P1, OR CUTLER HAMMER, PRL1.
C1 C2	2	MECHANICAL CONTACTOR, 8 POLE, 120V COIL, SQUARE D 6903-LG40V02, G.E. CP360M2, CUTLER HAMMER C308C, PROVIDE WITH TWO-WIRE CONTROL FOR PHOTOCCELL INTERFACE.
D	1	GFI RECEPTACLE 120V, 20A, SPECIFICATION, GRADE, NEMA 5-20R IN WEATHER-PROOF BOX WITH FLAP-TYPE COVER, HUBBELL GF5362A WITH WP26 COVER, LEVITON, PASS & SEYMOUR, OR COPPER.
E	1	20A SPDT MICRO SWITCH (MOUNT WITH ACTUATOR TO SWITCH WHEN DOOR OPENED), 120 VOLT, 15 AMP CONTACTS, SQUARE D XCK1110, G.E., CUTLER HAMMER, OR SIEMENS.
F	1	60 WATT LIGHT FIXTURE, VAPOR TIGHT WITH GLOBE AND GUARD AND MOUNTING BOX. LAMP PROVIDED WITH FIXTURE.
H	1	SURGE ARRESTOR, BRACKET MOUNTED, 120/240 VOLT SERVICE, SQUARE D S0SA1175, G.E., CUTLER HAMMER.
I1 I2	2	PHOTOCCELL, 120V, 1500 VA RATED, SINGLE POLE, SINGLE THROW CONTACT, WEATHERPROOF AND CORROSION PROOF ENCLOSURE, U.L. LISTED, TORK 3000, PARAGON, OR INTERMATIC.
J	1	E.C. SHALL REUSE EXISTING CABINET IF POSSIBLE. ENCLOSURE PAD MOUNTED, STAINLESS STEEL, N.E.M.A. 4 CONSTRUCTION WITH KEY LOCKING DOOR. KEY CYLINDER SHALL MATCH EXISTING VILLAGE LIGHTING CONTROLLER LOCKS. HOFFMAN, OR APPROVED EQUAL, 30"W, 48"H, 18"D
K1 K2	2	TOGGLE SWITCH, SPDT, 20 AMP, 240 VOLT, SPECIFICATION GRADE MOUNTED IN SURFACE BOX. HUBBELL HBL1221, LEVITON 1221-2, PASS & SEYMOUR PS20AC1, OR COOPER 2221.
M	1	MAIN CIRCUIT BREAKER, MOLDED CASE THERMAL MAGNETIC, SERVICE ENTRANCE DUTY RATED 240 VOLT, 100 AMP, 2 POLE, AIC RATING OF 14,000 AMPS AT 240 VOLTS, INTEGRAL TO BRANCH PANEL.
N	1	COPPER LOAD TERMINAL BLOCK FOR #6/6 AND #6/12
O1 O2	2	FORM TYPE C RELAY, ELECTRICALLY HELD, ONE NORMALLY OPEN (N.O.) AND ONE NORMALLY CLOSED (N.C.) CONTACTS, 600V CONTINUOUS DUTY COIL, 30 AMP CONTACT RATING, SQUARE D CLASS 8501, G.E., OR CUTLER HAMMER.
T	1	THERMOSTAT, 40-80 DEGREE RANGE, CHROMALOX WR80, TRANE, MODINE, OR REZNOR.
S	1	HEATER, 120 VOLT, 375 WATT, 40-80 DEGREE THERMOSTAT, CHROMALOX 276-10, TRANE, MODINE, OR REZNOR.



2 LIGHTING CONTROL CABINET
NO SCALE
U.L. LISTED
DOT APPROVED

K J ENGINEERING CONSULTANTS
 1771 W. DIEHL ROAD, SUITE 300
 NAPERVILLE, IL 60563
 630.527.2320 FAX: 630.527.2321
 www.kjw.com
 PROJECT # 07.0610.00

EXPERIENCE YOU CAN BUILD ON

KJW ENGINEERING RESERVES PROPRIETARY RIGHTS, INCLUDING COPYRIGHTS, TO THIS DRAWING AND THE DATA SHOWN THEREON. SAID DRAWING AND/OR DATA ARE THE EXCLUSIVE PROPERTY OF KJW ENGINEERING AND SHALL NOT BE USED OR REPRODUCED FOR ANY OTHER PROJECT WITHOUT THE EXPRESS WRITTEN APPROVAL AND PARTICIPATION OF KJW ENGINEERING. © 2007 KJW, P.C.

REFERENCE SCALE IN INCHES
 0 1 2 3

PLANS PREPARED BY:
GEWALT HAMILTON ASSOCIATES, INC.
 Consulting Engineers & Surveyors
 850 Forest Ridge Drive
 Vernon Hills, IL 60061
 (847) 476-9700
 (847) 476-9701 Fax

REVISIONS

NAME	DATE

ILLINOIS DEPARTMENT OF TRANSPORTATION
E7: ONE LINE DIAGRAM & SCHEDULES

DES PLAINES LIGHTING IMPROVEMENTS AND STREETSCAPE DES PLAINES, ILLINOIS

SCALE: NTS
 DATE: 8-14-2009

DRAWN BY: JOP
 DESIGNED BY: MCK
 CHECKED BY: MCK