

TYPE: BOLT-ON
MOUNTING: SURFACE-INTERIOR ONLY
FED FROM: UTILITY
AIC RATING: 14,000

PANEL NAME: ELLINWOOD 3
CONNECTED 11.2 KVA

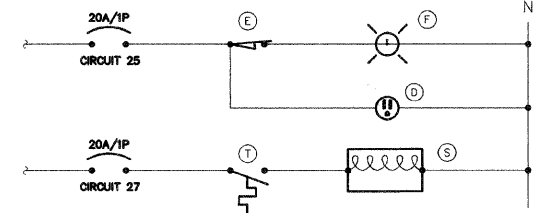
MAIN: 100A MCB
VOLTS: 240/120
PHASE: 1
WIRE: 3

CKT NO.	LOAD DESCRIPTION	WIRE SIZE	LOAD KVA	BREAKER AMP	BREAKER P	LOAD KVA	WIRE SIZE	LOAD DESCRIPTION	CKT NO.
1	A 1F1, 1F2, 8F3	"S	2.6	30	2	20	1 1.0	"S X1 5 RECEPT.	2
3		"S	--	--	--	20	1 0.8	"S X2 4 RECEPT.	4
5	B 2F2, 9F3	"S	3.1	30	2	20	1 0.8	"S Y1 4 RECEPT.	6
7		"S	--	--	--	20	1 1.0	"S Y2 3 RECEPT.	8
9	SURGE ARRESTOR	"O	0.1	30	2	20	1 0.6	"S Z1 3 RECEPT.	10
11		"S	--	--	--	20	1 0.4	"S Z2 2 RECEPT.	12
13	SPARE		--	30	2	20	1	SPARE	14
15	SPARE		--	--	--	20	1	SPARE	16
17	SPARE		--	--	--			SPARE	18
19	SPARE		--	--	--			SPARE	20
21	SPARE		--	--	--			SPARE	22
23	SPARE		--	--	--			SPARE	24
25	LGT, RECEPT. IN CABINET		12	0.3	20	1		SPARE	26
27	CABINET HEATER		12	0.4	20	1		SPARE	28
29	LGT CONTROL		12	0.1	20	1		SPARE	30

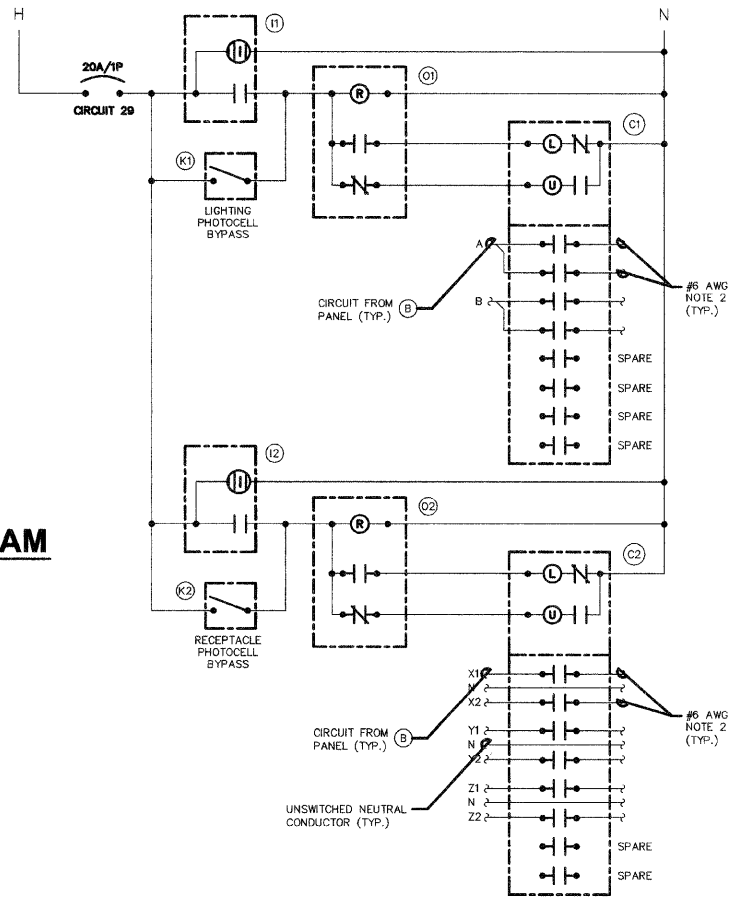
NOTES: "S" = REFER TO SHEET E3 FOR WIRE SIZE. "O" = REFER TO ONE LINE DIAGRAM ON SHEET E9 FOR WIRE SIZE.

ONE-LINE DIAGRAM NOTES

- AIC RATINGS LISTED FOR EQUIPMENT ARE MINIMUM REQUIREMENTS FOR BUS BRACING AND DEVICE RATING. ALL EQUIPMENT SHALL BE FULLY RATED UNLESS SPECIFICALLY NOTED AS SERIES RATED.
- ALL FUSES FROM 0 AMPERE TO 200 AMPERE SHALL BE DUAL ELEMENT, CLASS RK-5 UNLESS NOTED OTHERWISE.
- INDICATES DIRECT CONNECTION OF GROUND CONDUCTOR TO GROUND BUS.



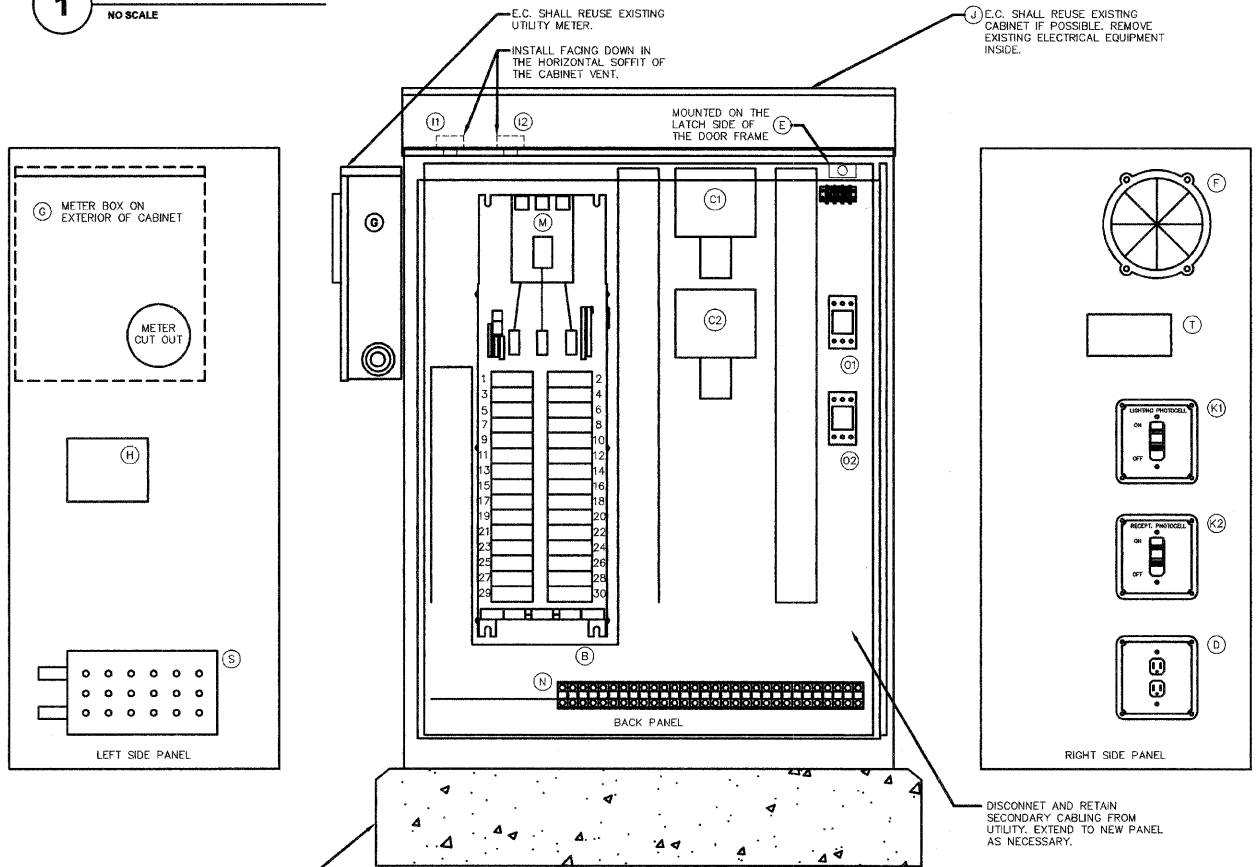
3 CABINET ELEMENTARY DIAGRAM
NO SCALE



4 LIGHTING CONTROL ELEMENTARY DIAGRAM
NO SCALE

NOTES:
1. ALL CABINET INTERIOR WIRING SHALL BE STRANDED COPPER #12 AWG THWN UNLESS NOTED OTHERWISE.
2. ROUTE TO STREET LIGHTING LUMINAIRES VIA TERMINAL BLOCK. (N)

1 ONE LINE DIAGRAM ELLINWOOD 3
NO SCALE



2 LIGHTING CONTROL CABINET
NO SCALE
U.L. LISTED
IDOT APPROVED

BILL OF MATERIALS FOR LIGHTING CONTROLLER "E3"

ITEM #	QUANTITY	DESCRIPTION
B	1	BRANCH CIRCUIT PANEL INTERIOR, 100A COPPER BUS, 240/120 VOLT, MOLDED CASE THERMAL MAGNETIC CIRCUIT BREAKERS, BUILT ON TYPE, AIC RATING OF 14,000 AMPS AT 240 VOLTS. SQUARE D 1630-NQ00, G.E. AQ, SIEMENS P1, OR OUTLER HAMMER PRL1.
C1 C2	2	MECHANICAL CONTACTOR, 8 POLE, 30 AMP, 120V COIL. SQUARE D 8903-LV40V02, G.E. CP360ML2, OUTLER HAMMER 6308G. PROVIDE WITH TWO-WIRE CONTROL FOR PHOTOCELL INTERFACE.
D	1	GR RECEPTACLE 120V, 20A, SPECIFICATION GRADE, NEMA 5-20R IN WEATHER-PROOF BOX WITH FLAP-TYPE COVER, HUBBELL GF5362A WITH WP26 COVER, LEVITON, PASS & SEYMOUR, OR COPPER.
E	1	20A SPDT MICRO SWITCH (MOUNT WITH ACTUATOR TO SWITCH WHEN DOOR OPENED), 120 VOLT, 15 AMP CONTACTS. SQUARE D NCKL110, G.E., OUTLER HAMMER, OR SIEMENS.
F	1	60 WATT LIGHT FIXTURE, VAPOR TIGHT WITH GLOBE AND GUARD AND MOUNTING BOX. LAMP PROVIDED WITH FIXTURE.
G	1	METER FITTING, 1 PHASE, 3 WIRE, 100 AMP
H	1	SURGE ARRESTOR, BRACKET MOUNTED, 120/240 VOLT SERVICE, SQUARE D S0SA1175, G.E., OUTLER HAMMER.
I1 I2	2	PHOTOCELL, 120V, 1500 VA RATED, SINGLE POLE, SINGLE THROW CONTACT, WEATHERPROOF AND CORROSION PROOF ENCLOSURE. U.L. LISTED. TORX 3000, PARAGON, OR INTERMATIC.
J	1	E.C. SHALL REUSE EXISTING CABINET IF POSSIBLE. ENCLOSURE PAD MOUNTED, STAINLESS STEEL, N.E.M.A. #4 CONSTRUCTION WITH KEY LOCKING DOOR. KEY CYLINDER SHALL MATCH EXISTING VILLAGE LIGHTING CONTROLLER LOCKS. HOFFMAN, OR APPROVED EQUAL. 30"W, 48"H, 18"D
K1 K2	2	TOGGLE SWITCH, SPDT, 20 AMP, 240 VOLT, SPECIFICATION GRADE MOUNTED IN SURFACE BOX. HUBBELL HBL121, LEVITON 122-2, PASS & SEYMOUR PS20AC1, OR COOPER 2221.
M	1	MAIN CIRCUIT BREAKER, MOLDED CASE THERMAL MAGNETIC, SERVICE ENTRANCE DUTY RATED 240 VOLT, 100 AMP, 2 POLE, AIC RATING OF 14,000 AMPS AT 240 VOLTS. INTEGRAL TO BRANCH PANEL.
N	1	COPPER LOAD TERMINAL BLOCK FOR AWG#6 AND AWG#12
O1 O2	2	FORM TYPE C RELAY, ELECTRICALLY HELD, ONE NORMALLY OPEN (N.O.) AND ONE NORMALLY CLOSED (N.C.) CONTACTS, 600V CONTINUOUS DUTY COIL, 30 AMP CONTACT RATING, SQUARE D G551, G.E., OR OUTLER HAMMER.
T	1	THERMOSTAT, 40-80 DEGREE RANGE. CHROMALOX WR80, TRANE, MODINE, OR REZNOR.
S	1	HEATER, 120 VOLT, 375 WATT, 40-80 DEGREE THERMOSTAT. CHROMALOX 278-10, TRANE, MODINE, OR REZNOR.

PLANS PREPARED BY:
GEWALT HAMILTON ASSOCIATES, INC.
Consulting Engineers & Surveyors
850 Forest Edge Drive
Vernon Hills, IL 60061
(847) 478-9700
(847) 478-9701 Fax

REVISIONS

NAME	DATE

ILLINOIS DEPARTMENT OF TRANSPORTATION
E9: ONE LINE DIAGRAM & SCHEDULES

DES PLAINES LIGHTING IMPROVEMENTS AND STREETSCAPE DES PLAINES, ILLINOIS

SCALE: NTS
DATE: 8-14-2009

DRAWN BY: JOP
DESIGNED BY: MCK
CHECKED BY: MCK

K J ENGINEERING CONSULTANTS
1771 W. DIEHL ROAD, SUITE 300
NAPERVILLE, IL 60563
630.527.2320 FAX: 630.527.2321
www.kjw.com PROJECT #07.0810.00

KJW ENGINEERING RESERVES PROPRIETARY RIGHTS, INCLUDING COPYRIGHTS, TO THIS DRAWING AND THE DATA SHOWN THEREON. SAID DRAWING AND/OR DATA ARE THE EXCLUSIVE PROPERTY OF KJW ENGINEERING AND SHALL NOT BE USED OR REPRODUCED FOR ANY OTHER PROJECT WITHOUT THE EXPRESS WRITTEN APPROVAL AND PARTICIPATION OF KJW ENGINEERING. © 2007 KJW, P.C.

REFERENCE SCALE IN INCHES
0 1 2 3