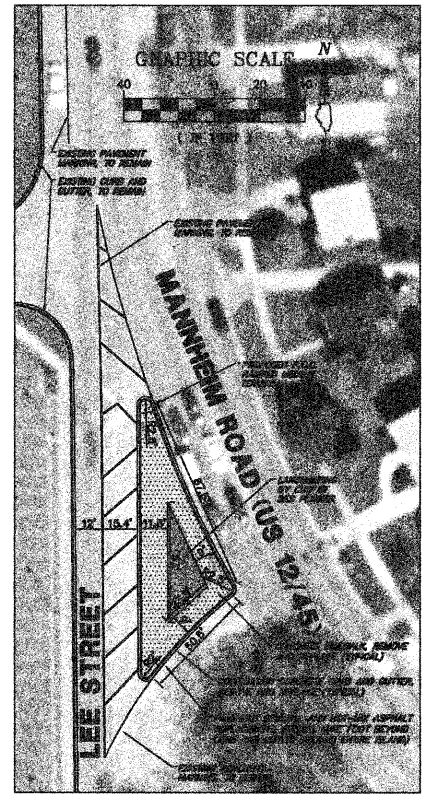
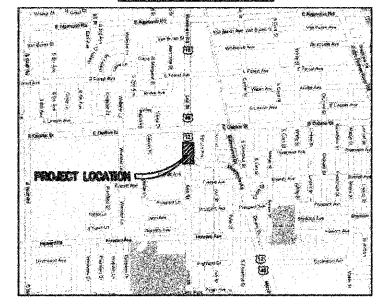


SCHEDULE OF QUANTITIES				
Item No.	Code No.	Items	Unit	Quantity
2	20201200	REMOVAL AND DISPOSAL OF UNSUITABLE MATERIAL	CU YD	15
3	20703220	POROUS GRANULAR EMBANKMENT	CU YD	15
4	31101200	3 1/2" SUB-BASE GRANULAR MATERIAL, TYPE B 4"	SQ YD	340
5	35200600	EARTH EXCAVATION	CU YD	40
6	35300500	PORTLAND CEMENT CONCRETE BASE COURSE 10"	SQ YD	31
7	40300100	BITUMINOUS MATERIALS (PRIME COAT)	GAL	10
8	40900050	INCIDENTAL HOT-MIX ASPHALT SURFACING	TON	4
9	42400300	PORTLAND CEMENT CONCRETE SIDEWALK 6 INCH	SQ FT	2058
10	44000100	PAVEMENT REMOVAL	SQ YD	31
11	44000500	COMBINATION CURB AND GUTTER REMOVAL	FOOT	275
12	44000600	SIDEWALK REMOVAL	SQ FT	2085
13	60603800	COMBINATION CONCRETE CURB AND GUTTER, TYPE B 6.12	FOOT	275
14	60629900	P.C.C. RAMPED MEDIAN TERMINAL	EACH	1
26	X0301700	DRILL AND GROUT #6 TIE BARS	EACH	280
29	Z0062450	SAWING PAVEMENT (FULL DEPTH)	FOOT	290

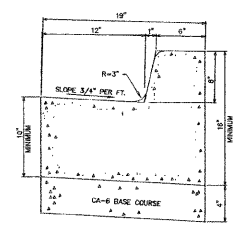
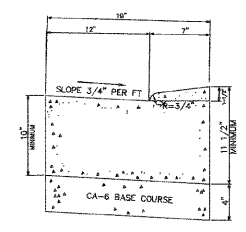
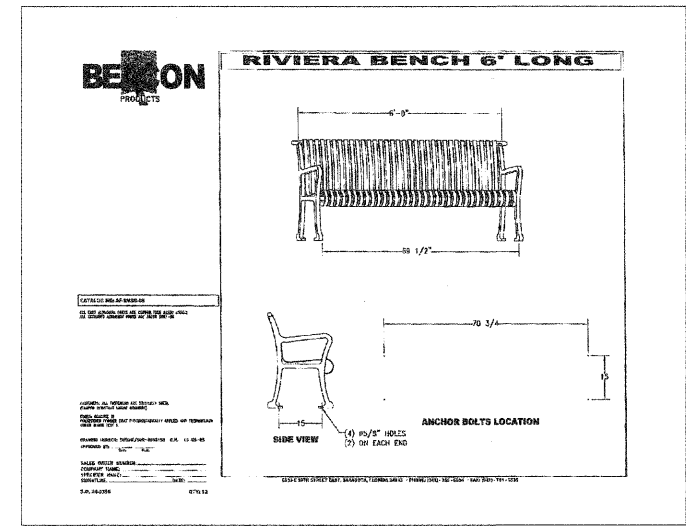
IDOT HIGHWAY STANDARDS

- 606301: PCC ISLANDS AND MEDIANS
- 701601: URBAN LANE CLOSURE, MULTILANE, 1W OR 2W WITH NONTRAVERSABLE MEDIAN
- 701605: URBAN LANE CLOSURE, MULTILANE, 2W WITH MOUNTABLE MEDIAN
- 701701: URBAN LANE CLOSURE, MULTILANE INTERSECTION
- 701901: TRAFFIC CONTROL DEVICES

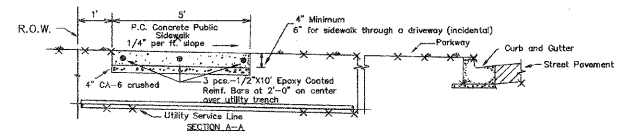
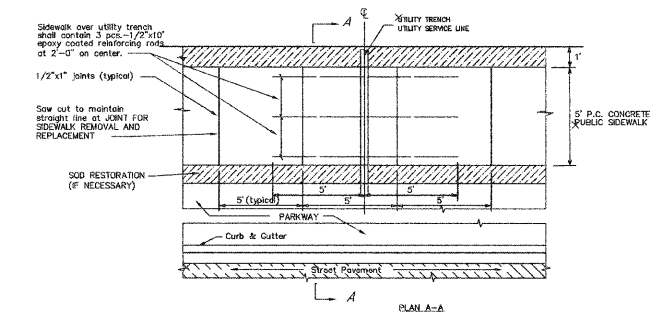
LOCATION MAP



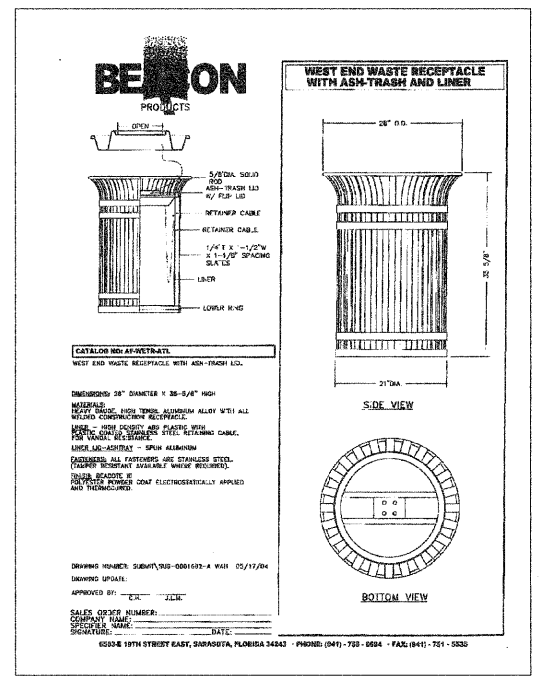
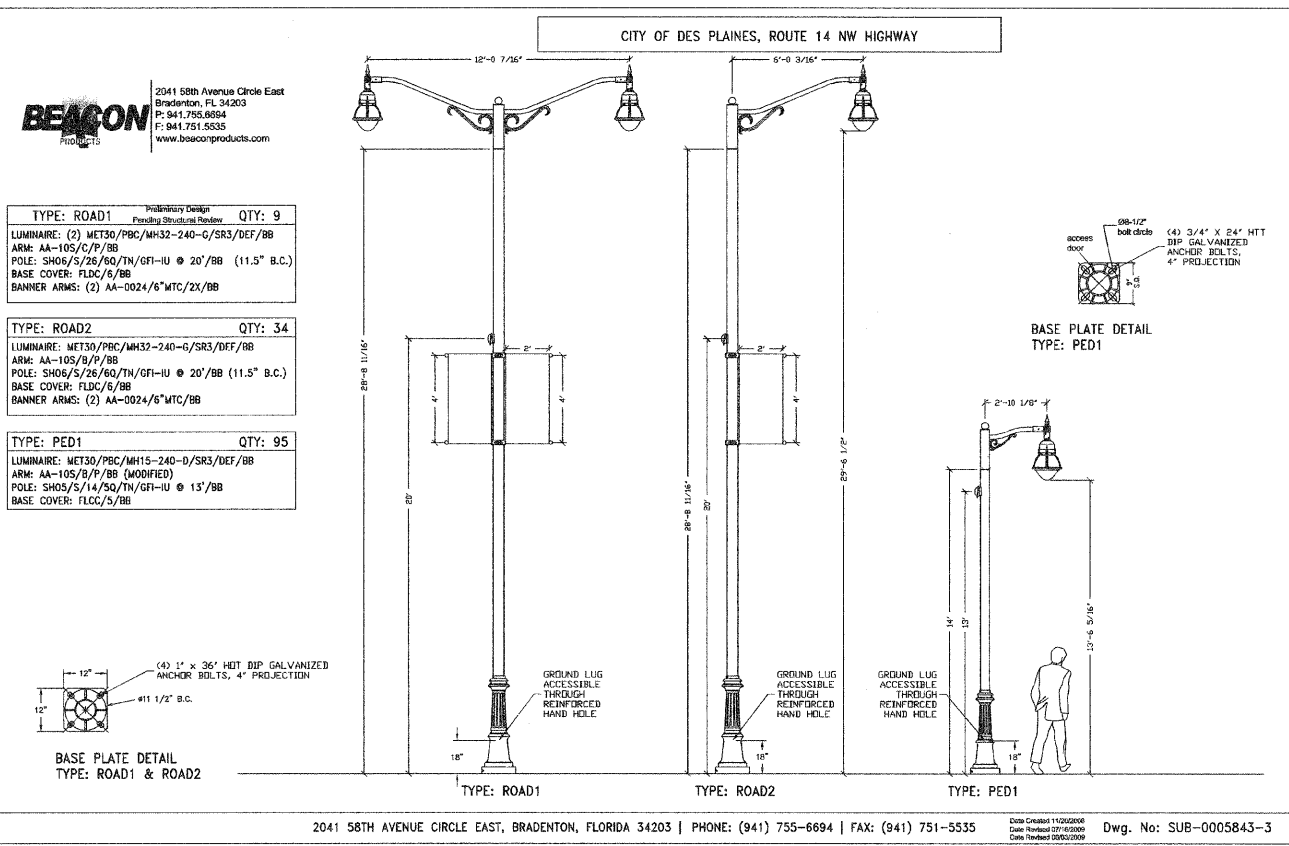
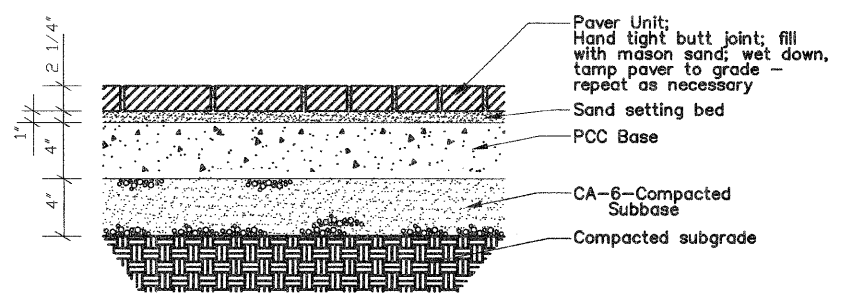
LEE STREET ISLAND



CONCRETE PUBLIC SIDEWALK DETAIL



BRICK PAVING DETAIL IN CITY R.O.W.



PLANS PREPARED BY:
GEWALT HAMILTON ASSOCIATES, INC.
 Consulting Engineers & Surveyors
 850 Forest Ridge Drive
 Vernon Hills, IL 60061
 (847) 478-9700
 (847) 478-9701 Fax

REVISIONS	
NAME	DATE

ILLINOIS DEPARTMENT OF TRANSPORTATION
LIGHTING & STREETScape DETAILS
 DES PLAINES LIGHTING IMPROVEMENTS
 AND STREETScape
 DES PLAINES, ILLINOIS
 SCALE: NTS
 DATE: 8-14-2009
 DRAWN BY: DRS
 DESIGNED BY: AJP
 CHECKED BY: BLS