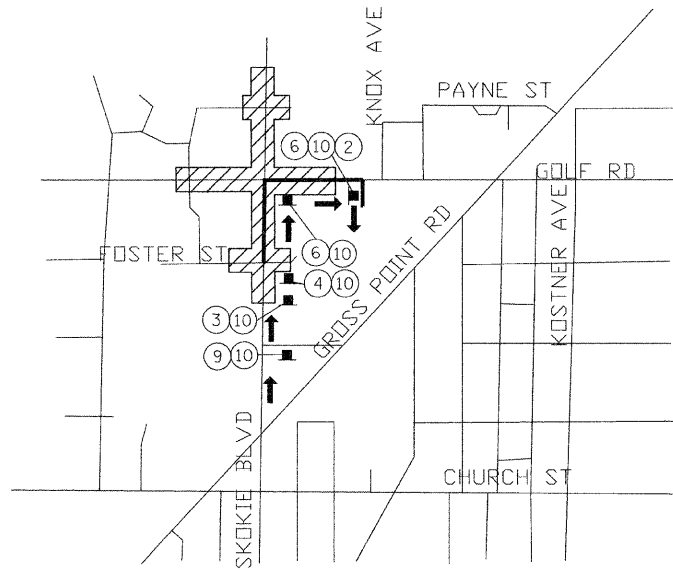


F.A.P. RTE.	SECTION	COUNTY	TOTAL SHEETS	SHEET NO.
350	DO-00242-00-CH	COOK	129	43
STA. TO STA.		FED. ROAD DIST. NO. 7 ILLINOIS FED. AID PROJECT		

STAGE 1A DETOUR
NO RIGHT NB SKOKIE TO EB FOSTER



STAGE 2B AND 2C DETOUR
NO LEFT WB GOLF TO SB SKOKIE (STAGE 2B ONLY)
NO LEFT EB GOLF TO NB SKOKIE (STAGE 2B AND 2C)



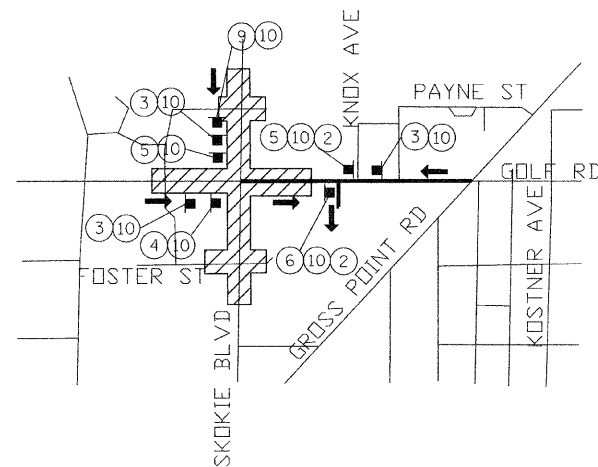
LEGEND

- SIGN ON PORTABLE OR PERMANENT SUPPORT
- ⊕ SIGN DESCRIPTION NUMBER
- DETOUR DIRECTION
- ⚡ FLASHING LIGHT (TYPE A)
- DETOUR ROUTE
- ▨ PROJECT WORK AREA

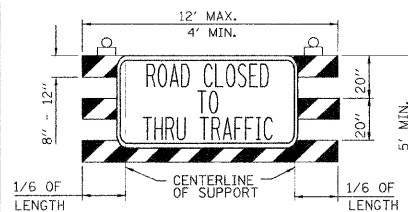
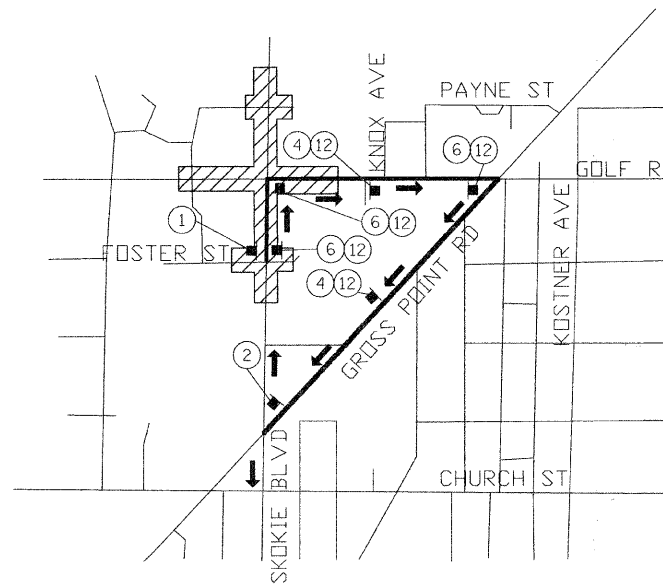
NOTES:

1. SEE STATE STANDARDS AND DETOUR PLANS FOR SIGNING AND BARRICADES.
2. LOCAL ACCESS FOR ALL RESIDENTS AND BUSINESSES SHALL BE MAINTAINED AT ALL TIMES.
3. ALL DETOUR SIGNING AND TRAFFIC CONTROL DEVICES FOR ALL CONSTRUCTION STAGES SHALL BE INCLUDED IN THE CONTRACT LUMP SUM PRICE FOR TRAFFIC CONTROL AND PROTECTION (SPECIAL).

STAGE 2D DETOUR
NO LEFT SB SKOKIE TO EB FOSTER



STAGE 2G DETOUR
NO THRU AND LEFT WB FOSTER



- ① ROAD CLOSED TO THRU TRAFFIC TYPE III BARRICADE STANDARD FLASHING (DOT HWY STD 702001) W/ R11-4 (60" X 30")
- ② M4-8A 48" X 48" END DETOUR
- ③ W20-2 48" X 48" STANDARD FLASHING BLACK ON ORANGE (REFLECTORIZED)
- ④ M4-9 30" X 24" BLACK ON ORANGE (REFLECTORIZED) DETOUR
- ⑤ M4-9(BL) 30" X 24" BLACK ON ORANGE (REFLECTORIZED) DETOUR
- ⑥ M4-9(BR) 30" X 24" BLACK ON ORANGE (REFLECTORIZED) DETOUR
- ⑦ M4-9R 30" X 24" BLACK ON ORANGE (REFLECTORIZED) DETOUR
- ⑧ M4-9L 30" X 24" BLACK ON ORANGE (REFLECTORIZED) DETOUR
- ⑨ W20-3A 48" X 48" STANDARD FLASHING ROAD CLOSED AHEAD
- ⑩ W17-1100 (2 EACH) 24" X 12" BLACK ON ORANGE (REFLECTORIZED) FOSTER ST. EASTBOUND
- ⑪ W17-1100 (2 EACH) 24" X 12" BLACK ON ORANGE (REFLECTORIZED) SKOKIE BLVD. NORTHBOUND
- ⑫ W17-1100 (2 EACH) 24" X 12" BLACK ON ORANGE (REFLECTORIZED) SKOKIE BLVD. SOUTHBOUND

REVISIONS	
NAME	DATE

ILLINOIS DEPARTMENT OF TRANSPORTATION
SKOKIE BOULEVARD (U.S. ROUTE 41)

SUGGESTED DETOUR PLAN

DATE 11-14-08
DRAWN BY JKM
CHECKED BY DWB

NOT TO SCALE

PLOT DATE = 11/13/2008
PLOT SCALE = 1" = 400'
PLOT USER = JKM