

F.A.P. RTE.	SECTION	COUNTY	TOTAL SHEETS	SHEET NO.
350	00-00242-00-CH	COOK	129	68
STA.		TO STA.		
FED. ROAD DIST. NO. 7 ILLINOIS FED. AID PROJECT				

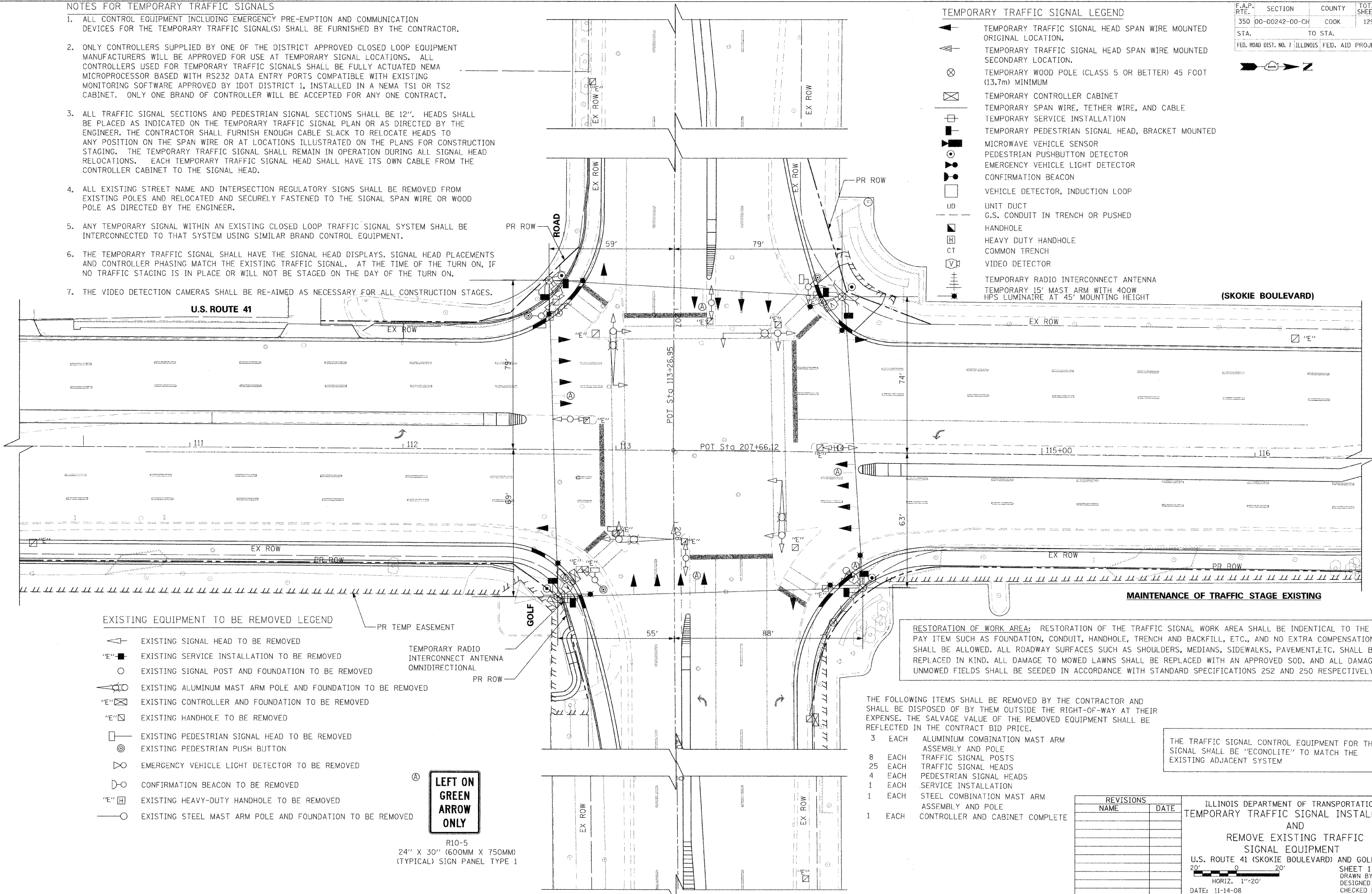
NOTES FOR TEMPORARY TRAFFIC SIGNALS

- ALL CONTROL EQUIPMENT INCLUDING EMERGENCY PRE-EMPTION AND COMMUNICATION DEVICES FOR THE TEMPORARY TRAFFIC SIGNAL(S) SHALL BE FURNISHED BY THE CONTRACTOR.
- ONLY CONTROLLERS SUPPLIED BY ONE OF THE DISTRICT APPROVED CLOSED LOOP EQUIPMENT MANUFACTURERS WILL BE APPROVED FOR USE AT TEMPORARY SIGNAL LOCATIONS. ALL CONTROLLERS USED FOR TEMPORARY TRAFFIC SIGNALS SHALL BE FULLY ACTUATED NEMA MICROPROCESSOR BASED WITH RS232 DATA ENTRY PORTS COMPATIBLE WITH EXISTING MONITORING SOFTWARE APPROVED BY IDOT DISTRICT 1, INSTALLED IN A NEMA TSI OR TS2 CABINET. ONLY ONE BRAND OF CONTROLLER WILL BE ACCEPTED FOR ANY ONE CONTRACT.
- ALL TRAFFIC SIGNAL SECTIONS AND PEDESTRIAN SIGNAL SECTIONS SHALL BE 12". HEADS SHALL BE PLACED AS INDICATED ON THE TEMPORARY TRAFFIC SIGNAL PLAN OR AS DIRECTED BY THE ENGINEER. THE CONTRACTOR SHALL FURNISH ENOUGH CABLE SLACK TO RELOCATE HEADS TO ANY POSITION ON THE SPAN WIRE OR AT LOCATIONS ILLUSTRATED ON THE PLANS FOR CONSTRUCTION STAGING. THE TEMPORARY TRAFFIC SIGNAL SHALL REMAIN IN OPERATION DURING ALL SIGNAL HEAD RELOCATIONS. EACH TEMPORARY TRAFFIC SIGNAL HEAD SHALL HAVE ITS OWN CABLE FROM THE CONTROLLER CABINET TO THE SIGNAL HEAD.
- ALL EXISTING STREET NAME AND INTERSECTION REGULATORY SIGNS SHALL BE REMOVED FROM EXISTING POLES AND RELOCATED AND SECURELY FASTENED TO THE SIGNAL SPAN WIRE OR WOOD POLE AS DIRECTED BY THE ENGINEER.
- ANY TEMPORARY SIGNAL WITHIN AN EXISTING CLOSED LOOP TRAFFIC SIGNAL SYSTEM SHALL BE INTERCONNECTED TO THAT SYSTEM USING SIMILAR BRAND CONTROL EQUIPMENT.
- THE TEMPORARY TRAFFIC SIGNAL SHALL HAVE THE SIGNAL HEAD DISPLAYS, SIGNAL HEAD PLACEMENTS AND CONTROLLER PHASING MATCH THE EXISTING TRAFFIC SIGNAL. AT THE TIME OF THE TURN ON, IF NO TRAFFIC STAGING IS IN PLACE OR WILL NOT BE STAGED ON THE DAY OF THE TURN ON.
- THE VIDEO DETECTION CAMERAS SHALL BE RE-AIMED AS NECESSARY FOR ALL CONSTRUCTION STAGES.

TEMPORARY TRAFFIC SIGNAL LEGEND

- ▲ TEMPORARY TRAFFIC SIGNAL HEAD SPAN WIRE MOUNTED ORIGINAL LOCATION.
- ◀ TEMPORARY TRAFFIC SIGNAL HEAD SPAN WIRE MOUNTED SECONDARY LOCATION.
- ⊗ TEMPORARY WOOD POLE (CLASS 5 OR BETTER) 45 FOOT (13.7m) MINIMUM
- ⊠ TEMPORARY CONTROLLER CABINET
- TEMPORARY SPAN WIRE, TETHER WIRE, AND CABLE
- TEMPORARY SERVICE INSTALLATION
- ⊞ TEMPORARY PEDESTRIAN SIGNAL HEAD, BRACKET MOUNTED
- ⊙ MICROWAVE VEHICLE SENSOR
- ⊙ PEDESTRIAN PUSHBUTTON DETECTOR
- ⊙ EMERGENCY VEHICLE LIGHT DETECTOR
- ⊙ CONFIRMATION BEACON
- VEHICLE DETECTOR, INDUCTION LOOP
- UD UNIT DUCT
- G.S. CONDUIT IN TRENCH OR PUSHED
- ⊞ HANDHOLE
- ⊞ HEAVY DUTY HANDHOLE
- ⊞ CT COMMON TRENCH
- ⊞ VIDEO DETECTOR
- ⊞ TEMPORARY RADIO INTERCONNECT ANTENNA
- ⊞ TEMPORARY 15' MAST ARM WITH 400W HPS LUMINAIRE AT 45' MOUNTING HEIGHT

PLOT DATE = 11/13/2008
 PLOT SCALE = AS SHOWN
 PLOT USER = USER



EXISTING EQUIPMENT TO BE REMOVED LEGEND

- ▲ EXISTING SIGNAL HEAD TO BE REMOVED
- ⊞ EXISTING SERVICE INSTALLATION TO BE REMOVED
- EXISTING SIGNAL POST AND FOUNDATION TO BE REMOVED
- ⊞ EXISTING ALUMINIUM MAST ARM AND FOUNDATION TO BE REMOVED
- ⊞ EXISTING CONTROLLER AND FOUNDATION TO BE REMOVED
- ⊞ EXISTING HANDHOLE TO BE REMOVED
- ⊞ EXISTING PEDESTRIAN SIGNAL HEAD TO BE REMOVED
- ⊞ EXISTING PEDESTRIAN PUSH BUTTON
- ⊞ EMERGENCY VEHICLE LIGHT DETECTOR TO BE REMOVED
- ⊞ CONFIRMATION BEACON TO BE REMOVED
- ⊞ EXISTING HEAVY-DUTY HANDHOLE TO BE REMOVED
- ⊞ EXISTING STEEL MAST ARM POLE AND FOUNDATION TO BE REMOVED

**LEFT ON GREEN
ARROW
ONLY**
 R10-5
 24" X 30" (600MM X 750MM)
 (TYPICAL) SIGN PANEL TYPE 1

RESTORATION OF WORK AREA: RESTORATION OF THE TRAFFIC SIGNAL WORK AREA SHALL BE IDENTICAL TO THE PAY ITEM SUCH AS FOUNDATION, CONDUIT, HANDHOLE, TRENCH AND BACKFILL, ETC., AND NO EXTRA COMPENSATION SHALL BE ALLOWED. ALL ROADWAY SURFACES SUCH AS SHOULDERS, MEDIANS, SIDEWALKS, PAVEMENT, ETC. SHALL BE REPLACED IN KIND. ALL DAMAGE TO MOWED LAWNS SHALL BE REPLACED WITH AN APPROVED SOD. AND ALL DAMAGE TO UNMOWED FIELDS SHALL BE SEEDED IN ACCORDANCE WITH STANDARD SPECIFICATIONS 252 AND 250 RESPECTIVELY.

THE FOLLOWING ITEMS SHALL BE REMOVED BY THE CONTRACTOR AND SHALL BE DISPOSED OF BY THEM OUTSIDE THE RIGHT-OF-WAY AT THEIR EXPENSE. THE SALVAGE VALUE OF THE REMOVED EQUIPMENT SHALL BE REFLECTED IN THE CONTRACT BID PRICE.

- 3 EACH ALUMINIUM COMBINATION MAST ARM ASSEMBLY AND POLE
- 8 EACH TRAFFIC SIGNAL POSTS
- 25 EACH TRAFFIC SIGNAL HEADS
- 4 EACH PEDESTRIAN SIGNAL HEADS
- 1 EACH SERVICE INSTALLATION
- 1 EACH STEEL COMBINATION MAST ARM ASSEMBLY AND POLE
- 1 EACH CONTROLLER AND CABINET COMPLETE

THE TRAFFIC SIGNAL CONTROL EQUIPMENT FOR THIS SIGNAL SHALL BE "ECONOLITE" TO MATCH THE EXISTING ADJACENT SYSTEM

REVISIONS	
NAME	DATE

ILLINOIS DEPARTMENT OF TRANSPORTATION
 TEMPORARY TRAFFIC SIGNAL INSTALLATION
 AND
 REMOVE EXISTING TRAFFIC SIGNAL EQUIPMENT
 U.S. ROUTE 41 (SKOKIE BOULEVARD) AND GOLF ROAD
 SHEET 1 OF 3
 DRAWN BY SAG
 DESIGNED BY SRS
 CHECKED BY KMM
 DATE: 11-14-08