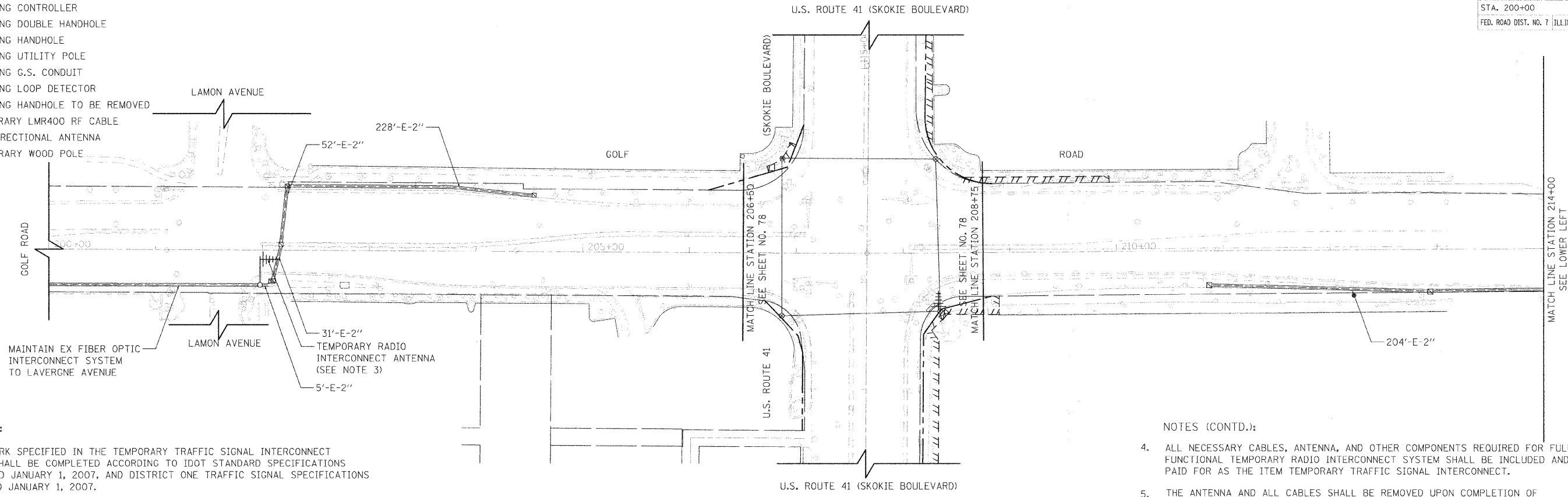


F.A.P. RTE.	SECTION	COUNTY	TOTAL SHEETS	SHEET NO.
350 00-00242-00-CH		COOK	129	79
STA. 200+00		TO STA. 227+00		
FED. ROAD DIST. NO. 7		ILLINOIS		FED. AID PROJECT

LEGEND:

- ☒ EXISTING CONTROLLER
- ☒ EXISTING DOUBLE HANDHOLE
- ☐ EXISTING HANDHOLE
- EXISTING UTILITY POLE
- EXISTING G.S. CONDUIT
- EXISTING LOOP DETECTOR
- ⊖ EXISTING HANDHOLE TO BE REMOVED
- TEMPORARY LMR400 RF CABLE
- ⊕ OMNIDIRECTIONAL ANTENNA
- ⊙ TEMPORARY WOOD POLE

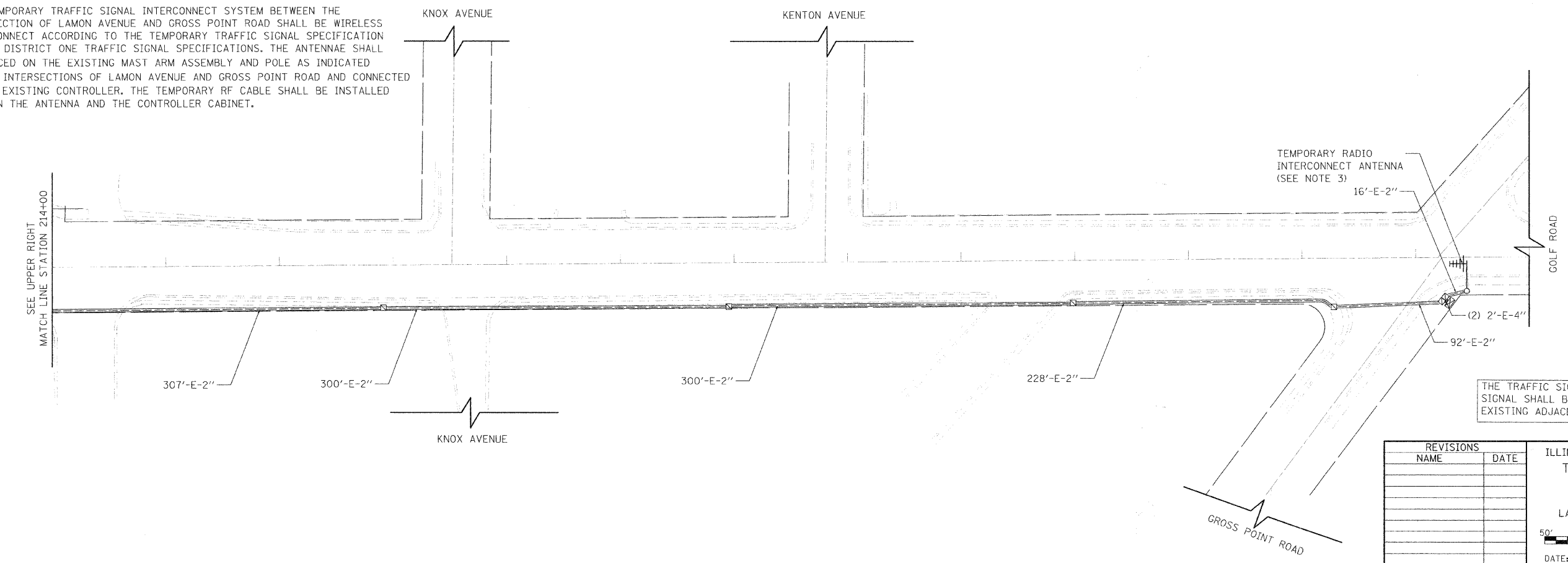


NOTES:

1. ALL WORK SPECIFIED IN THE TEMPORARY TRAFFIC SIGNAL INTERCONNECT PLAN SHALL BE COMPLETED ACCORDING TO IDOT STANDARD SPECIFICATIONS ADOPTED JANUARY 1, 2007, AND DISTRICT ONE TRAFFIC SIGNAL SPECIFICATIONS REVISED JANUARY 1, 2007.
2. THE CONTRACTOR SHALL BE RESPONSIBLE FOR MAINTAINING THE EXISTING TRAFFIC SIGNAL INSTALLATION AT THE GOLF ROAD INTERSECTIONS WITH LAMON AVENUE AND GROSS POINT ROAD AND THE INTERCONNECT SYSTEM BETWEEN THE TWO INTERSECTIONS.
3. THE TEMPORARY TRAFFIC SIGNAL INTERCONNECT SYSTEM BETWEEN THE INTERSECTION OF LAMON AVENUE AND GROSS POINT ROAD SHALL BE WIRELESS INTERCONNECT ACCORDING TO THE TEMPORARY TRAFFIC SIGNAL SPECIFICATION OF THE DISTRICT ONE TRAFFIC SIGNAL SPECIFICATIONS. THE ANTENNAE SHALL BE PLACED ON THE EXISTING MAST ARM ASSEMBLY AND POLE AS INDICATED AT THE INTERSECTIONS OF LAMON AVENUE AND GROSS POINT ROAD AND CONNECTED TO THE EXISTING CONTROLLER. THE TEMPORARY RF CABLE SHALL BE INSTALLED BETWEEN THE ANTENNA AND THE CONTROLLER CABINET.

NOTES (CONTD.):

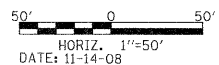
4. ALL NECESSARY CABLES, ANTENNA, AND OTHER COMPONENTS REQUIRED FOR FULLY FUNCTIONAL TEMPORARY RADIO INTERCONNECT SYSTEM SHALL BE INCLUDED AND PAID FOR AS THE ITEM TEMPORARY TRAFFIC SIGNAL INTERCONNECT.
5. THE ANTENNA AND ALL CABLES SHALL BE REMOVED UPON COMPLETION OF THE PROPOSED FIBER OPTIC INTERCONNECT SYSTEM. ANY HOLES IN THE MAST ARMS SHALL BE PLUGGED. THIS SHALL BE INCLUDED IN THE PAY ITEM OF TEMPORARY TRAFFIC SIGNAL INTERCONNECT.



THE TRAFFIC SIGNAL CONTROL EQUIPMENT FOR THIS SIGNAL SHALL BE "ECONOLITE" TO MATCH THE EXISTING ADJACENT SYSTEM

REVISIONS	
NAME	DATE

ILLINOIS DEPARTMENT OF TRANSPORTATION
 TEMPORARY TRAFFIC SIGNAL
 INTERCONNECT PLAN
 GOLF ROAD
 LAMON AVENUE TO GROSS POINT ROAD



DRAWN BY SAC
 DESIGNED BY SRS
 CHECKED BY KMM

PLOT DATE = 11/19/2008
 FILE NAME = 621411
 PLOT SCALE = 1/8"=1'-0"
 USER NAME = USER