

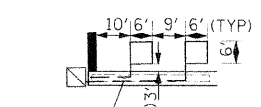
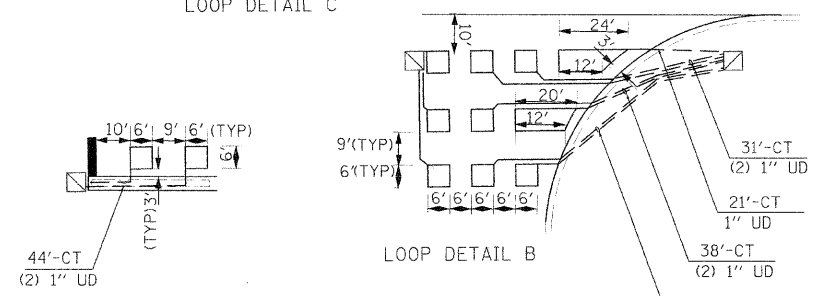
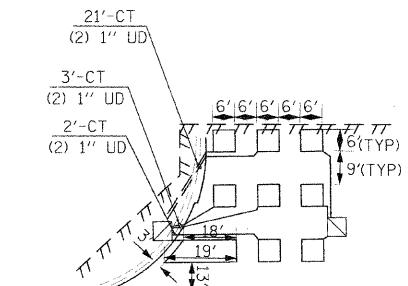
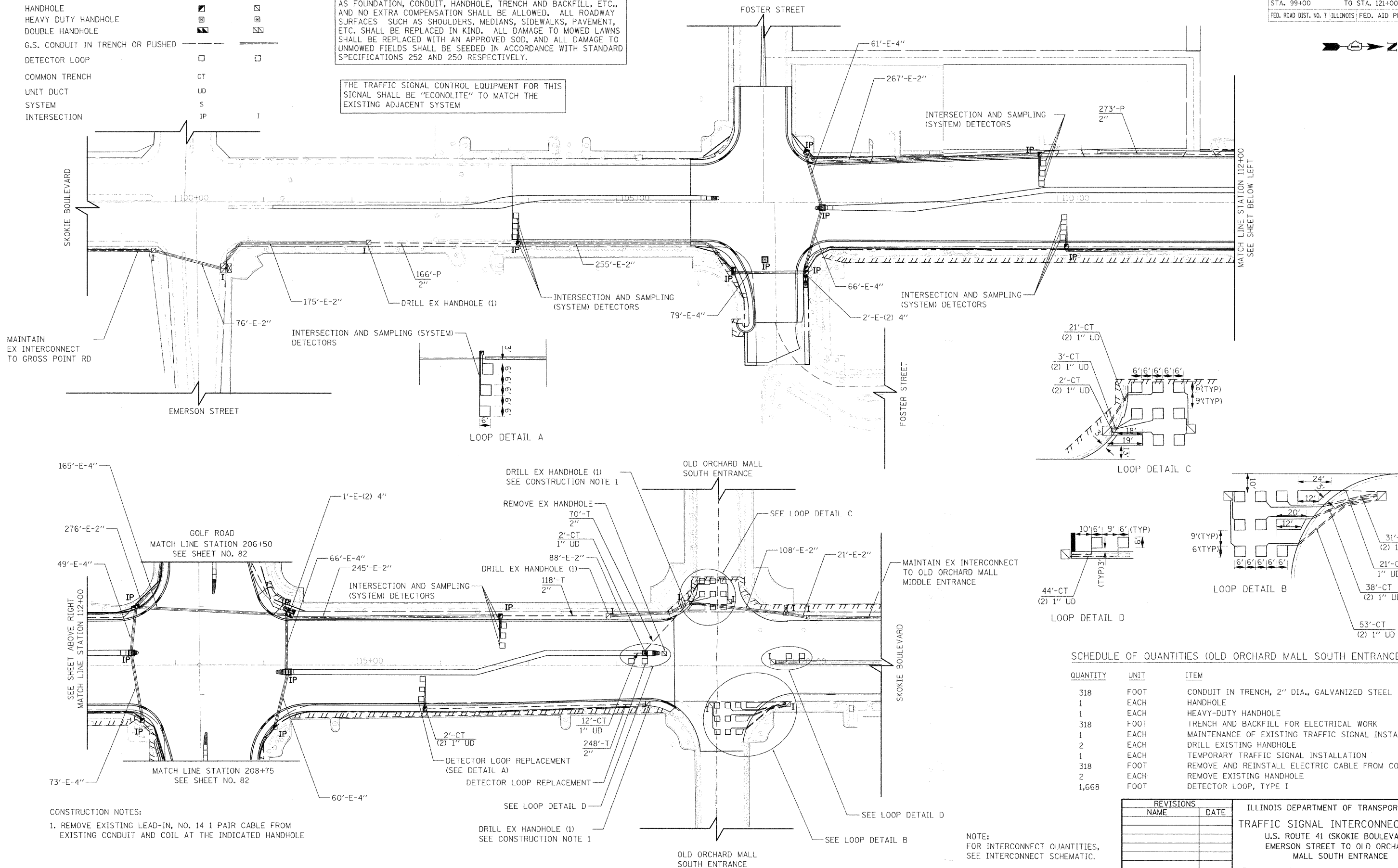
F.A.P. RTE.	SECTION	COUNTY	TOTAL SHEETS	SHEET NO.
350	00-00242-00-CH	COOK	129	81
STA. 99+00		TO STA. 121+00		
FED. ROAD DIST. NO. 7 ILLINOIS FED. AID PROJECT				

INTERCONNECT PLAN LEGEND

	PROPOSED	EXISTING
CONTROLLER		
HANDHOLE		
HEAVY DUTY HANDHOLE		
DOUBLE HANDHOLE		
G.S. CONDUIT IN TRENCH OR PUSHED		
DETECTOR LOOP		
COMMON TRENCH	CT	
UNIT DUCT	UD	
SYSTEM	S	
INTERSECTION	IP	I

RESTORATION OF WORK AREA. RESTORATION OF THE TRAFFIC SIGNAL WORK AREA SHALL BE INCIDENTAL TO THE RELATED PAY ITEM SUCH AS FOUNDATION, CONDUIT, HANDHOLE, TRENCH AND BACKFILL, ETC., AND NO EXTRA COMPENSATION SHALL BE ALLOWED. ALL ROADWAY SURFACES SUCH AS SHOULDERS, MEDIANS, SIDEWALKS, PAVEMENT, ETC. SHALL BE REPLACED IN KIND. ALL DAMAGE TO MOWED LAWNS SHALL BE REPLACED WITH AN APPROVED SOD, AND ALL DAMAGE TO UNMOWED FIELDS SHALL BE SEEDED IN ACCORDANCE WITH STANDARD SPECIFICATIONS 252 AND 250 RESPECTIVELY.

THE TRAFFIC SIGNAL CONTROL EQUIPMENT FOR THIS SIGNAL SHALL BE "ECONOLITE" TO MATCH THE EXISTING ADJACENT SYSTEM



SCHEDULE OF QUANTITIES (OLD ORCHARD MALL SOUTH ENTRANCE)

QUANTITY	UNIT	ITEM
318	FOOT	CONDUIT IN TRENCH, 2" DIA., GALVANIZED STEEL
1	EACH	HANDHOLE
1	EACH	HEAVY-DUTY HANDHOLE
318	FOOT	TRENCH AND BACKFILL FOR ELECTRICAL WORK
1	EACH	MAINTENANCE OF EXISTING TRAFFIC SIGNAL INSTALLATION
2	EACH	DRILL EXISTING HANDHOLE
1	EACH	TEMPORARY TRAFFIC SIGNAL INSTALLATION
318	FOOT	REMOVE AND REINSTALL ELECTRIC CABLE FROM CONDUIT
2	EACH	REMOVE EXISTING HANDHOLE
1,668	FOOT	DETECTOR LOOP, TYPE I

REVISIONS	
NAME	DATE

ILLINOIS DEPARTMENT OF TRANSPORTATION
TRAFFIC SIGNAL INTERCONNECT PLAN
 U.S. ROUTE 41 (SKOKIE BOULEVARD)
 EMERSON STREET TO OLD ORCHARD
 MALL SOUTH ENTRANCE

DRAWN BY SAG
 DESIGNED BY SRS
 CHECKED BY KMM

PLOT DATE = 11/19/2008
 FILE NAME = TRFLE10
 PLOT SCALE = 1/8"=1'-0"
 USER NAME = JUSERS

CONSTRUCTION NOTES:
 1. REMOVE EXISTING LEAD-IN, NO. 14 1 PAIR CABLE FROM EXISTING CONDUIT AND COIL AT THE INDICATED HANDHOLE

NOTE:
 FOR INTERCONNECT QUANTITIES,
 SEE INTERCONNECT SCHEMATIC.