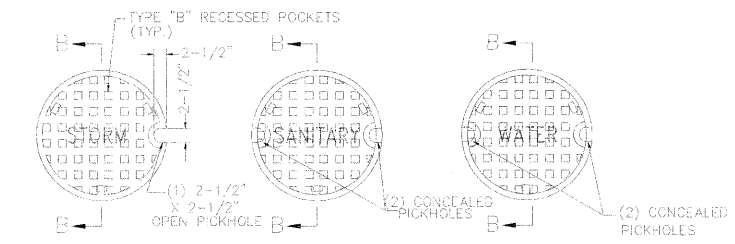
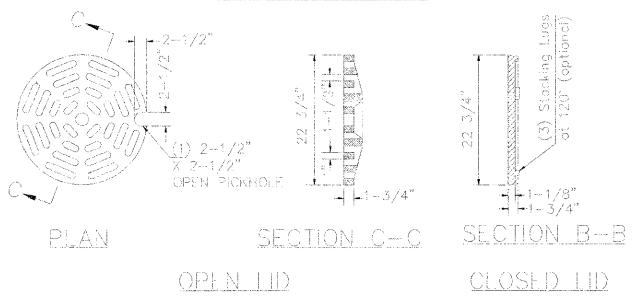


|   |                |         |              |           |
|---|----------------|---------|--------------|-----------|
| F.A.P. RTE.                                     | SECTION        | COUNTY  | TOTAL SHEETS | SHEET NO. |
| 350   | 00-00242-00-CH | COOK    | 129          | 95        |
| STA.  |                | TO STA. |              |           |
| FED. ROAD DIST. NO. 7 ILLINOIS FED. AID PROJECT |                |         |              |           |

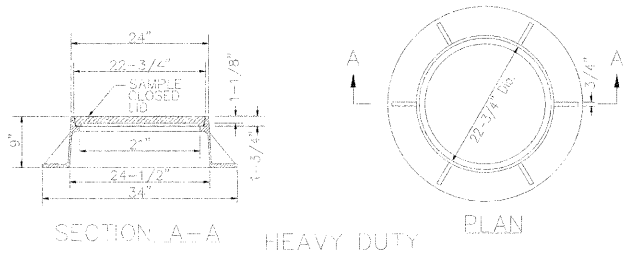


STORM SEWER SANITARY SEWER WATER MAIN  
('STORM', 'SANITARY', or 'WATER' CAST IN LID AS MARKED)

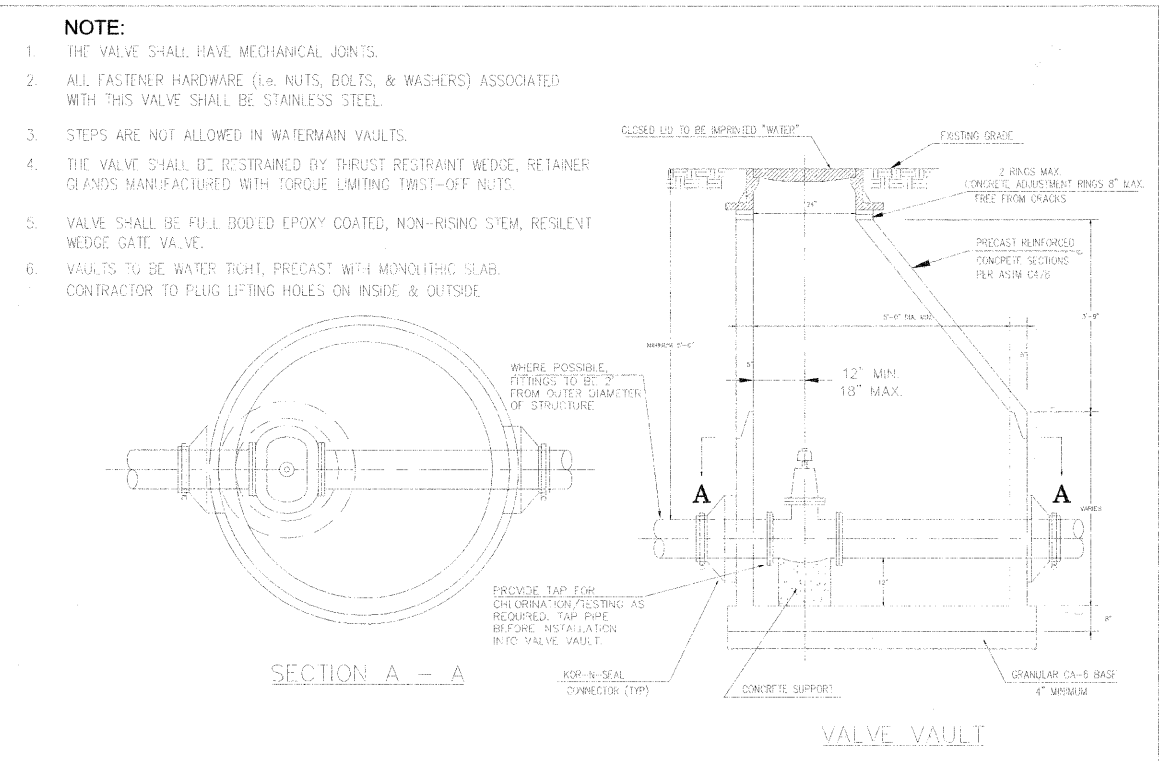
CLOSED LID PLAN



PLAN SECTION C-C SECTION B-B  
OPEN LID CLOSED LID

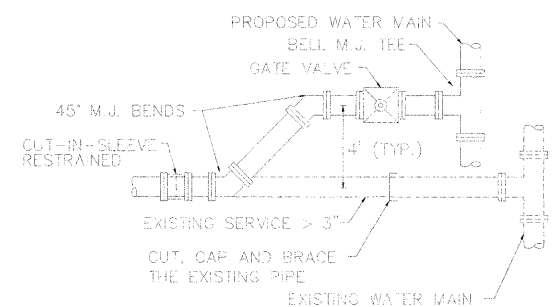


SECTION A-A HEAVY DUTY PLAN



**NOTE:**

1. THE VALVE SHALL HAVE MECHANICAL JOINTS.
2. ALL FASTENER HARDWARE (i.e. NUTS, BOLTS, & WASHERS) ASSOCIATED WITH THIS VALVE SHALL BE STAINLESS STEEL.
3. STEPS ARE NOT ALLOWED IN WATERMAIN VAULTS.
4. THE VALVE SHALL BE RESTRAINED BY THRUST RESTRAINT WEDGE, RETAINER GLANDS MANUFACTURED WITH TORQUE LIMITING TWIST-OFF NUTS.
5. VALVE SHALL BE FULL BODIED EPOXY COATED, NON-RISING STEM, RESILIENT WEDGE GATE VALVE.
6. VAULTS TO BE WATER TIGHT, PRECAST WITH MONOLITHIC SLAB. CONTRACTOR TO PLUG LIFTING HOLES ON INSIDE & OUTSIDE.



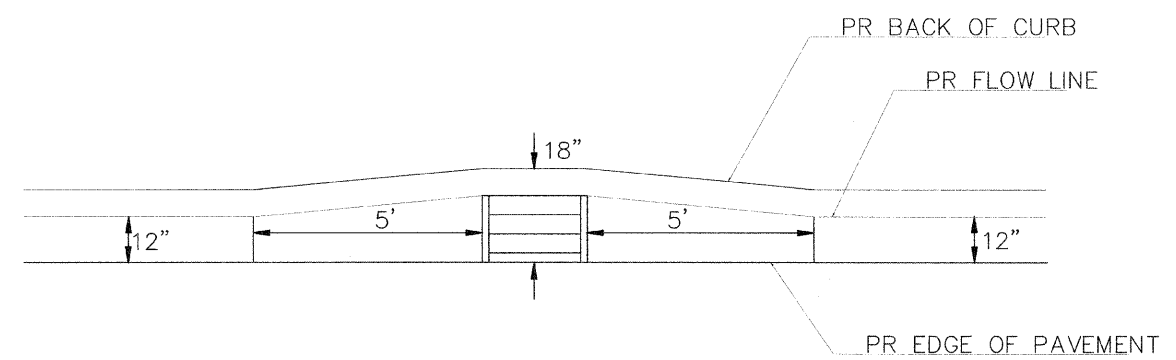
**NOTES:**

1. MFGA-LUGS TO BE USED WITH ALL M.J. FITTINGS.
2. IF EXIST. WATER SERVICE IS 3", PROVIDE 4" PIPING AND VALVE W/REDUCER AT POINT OF RECONNECTION.

WATER MAIN/SERVICE > 3" RECONNECTION

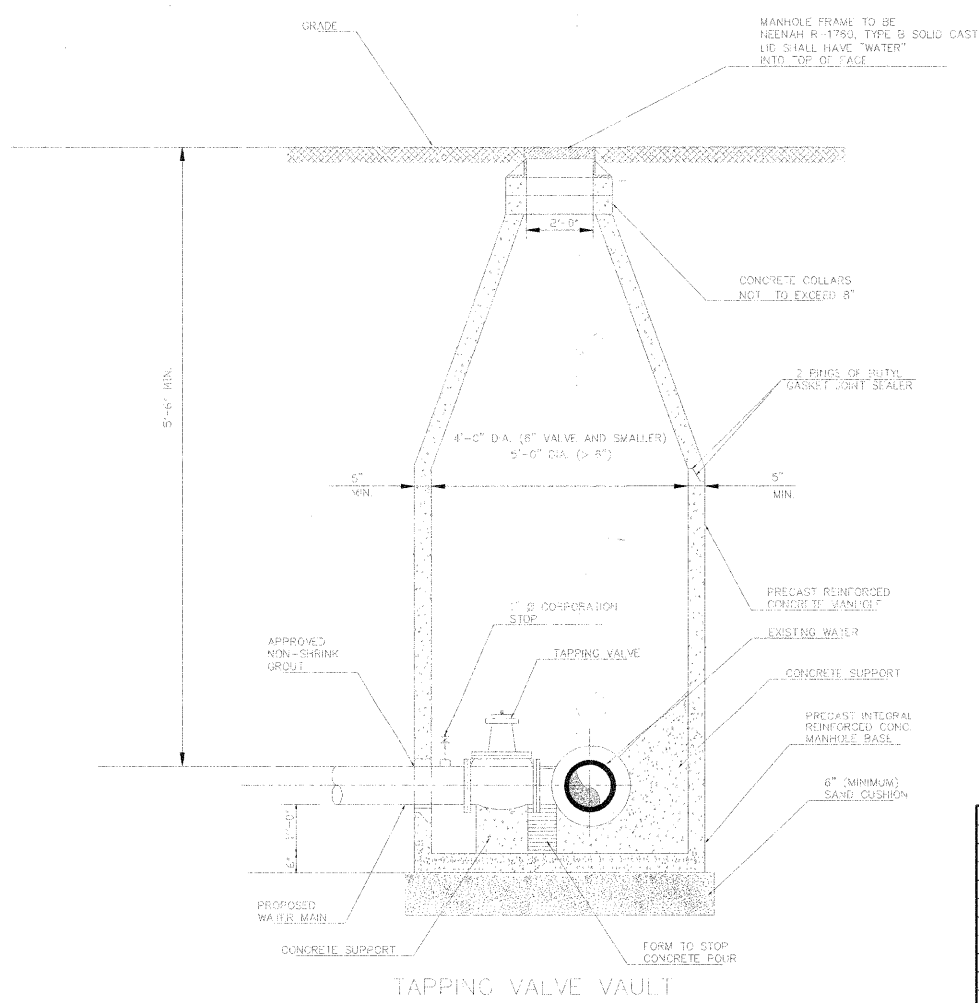
**NOTES:**

1. AFTER THE EXISTING WATER MAIN OR SERVICE IS CUT AT THE NOTED LOCATION, CONTRACTOR SHALL DETERMINE THE DISTANCE TO THE NEXT JOINT WITH A FEELER ROD. IF THE DISTANCE IS SIX (6) FEET OR MORE, THEN COMPLETE THE CONNECTION. IF THAT DISTANCE IS LESS THAN SIX (6) FEET, EXTEND THE NEW PIPE AND CONNECT.
2. AFTER THE NEW WATER MAIN IS APPROVED, CUT, CAP AND BRACE THE EXISTING SERVICE. REMOVE TEMPORARY PLUG AND CONNECT SERVICE TO THE VALVE. SWAB THE NEW PIPE WITH 1% HTH CHLORINE SOLUTION DURING THE INSTALLATION.



NOTE: TRANSITION LENGTH PAID FOR AS ADJACENT PROPOSED CURB AND GUTTER TYPE SHOWN ON PLANS.

CURB AND GUTTER TRANSITION AT TYPE 23 FRAME AND GRATE



TAPPING VALVE VAULT

| REVISIONS |      |
|-----------|------|
| NAME      | DATE |
|           |      |
|           |      |
|           |      |
|           |      |
|           |      |
|           |      |
|           |      |
|           |      |
|           |      |

ILLINOIS DEPARTMENT OF TRANSPORTATION  
SKOKIE BOULEVARD (U.S. ROUTE 41)

VILLAGE OF SKOKIE DETAILS

DATE 11-14-08  
DRAWN BY SAG  
CHECKED BY DWB

NOT TO SCALE

PLOT DATE = 11/19/2008  
FILE NAME = BELLEVILLE  
PLOT SCALE = 1/8"=1'-0"  
USER NAME = AUSER8