

F.A.P. RTE.	SECTION	COUNTY	TOTAL SHEETS	SHEET NO.
	98-00313-BR-00	DUPAGE	25	1
FED. ROAD DIST. NO. 1	ILLINOIS	CONTRACT NO. 63178		

CONTRACT NO. 63178

STATE OF ILLINOIS
DEPARTMENT OF TRANSPORTATION
DIVISION OF HIGHWAYS

**PLANS FOR PROPOSED
FEDERAL AID HIGHWAY**

**C.H. 48 / IL. PRAIRIE PATH
SECTION: 98-00313-00-BR
OVER E.J. & E. RAILROAD
PEDESTRIAN TRUSS SUPERSTRUCTURE
PROJECT: HPP-2106(002)
JOB NO.: C-91-143-09
VILLAGE OF WAYNE
COUNTY: DuPAGE**

INDEX OF SHEETS:

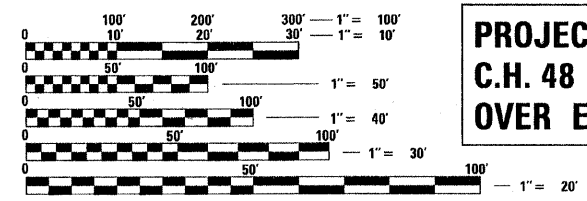
- 1 TITLE SHEET
- 2 GENERAL NOTES
- 3 SUMMARY OF QUANTITIES
- 4 TYPICAL SECTIONS, ALIGNMENT & TIES
- 5 TRAIL CLOSURE PLAN
- 6 PLAN & PROFILE C.H. 48 IL. PRAIRIE PATH
- 7 PLAN & PROFILE E.J. & E. RAILROAD
- 8 SITE & GRADING PLAN
- 9 EROSION CONTROL PLAN
- 10 EROSION AND SEDIMENT CONTROL DETAILS
- 11 TREE REMOVAL PLAN
- 12 LANDSCAPING PLAN
- 13-15 CROSS SECTIONS

BRIDGE PLANS:

- 16 GENERAL PLAN & ELEVATION
- 17 SLAB PLAN, CROSS SECTION & JOINT DETAILS
- 18 ABUTMENTS
- 19 PIER 1 & PIER 2 DETAILS
- 20 STEEL H-PILE DETAILS
- 21 BRIDGE APPROACH PAVEMENT
- 22-25 BORING LOGS

LIST OF HIGHWAY STANDARDS:

- 000001-05 STANDARD SYMBOLS, ABBREVIATIONS AND PATTERNS
- 280001-04 TEMPORARY EROSION CONTROL SYSTEMS
- 515001-03 NAME PLATE FOR BRIDGES
- 664001-02 CHAIN LINK FENCE
- 701901-01 TRAFFIC CONTROL DEVICES

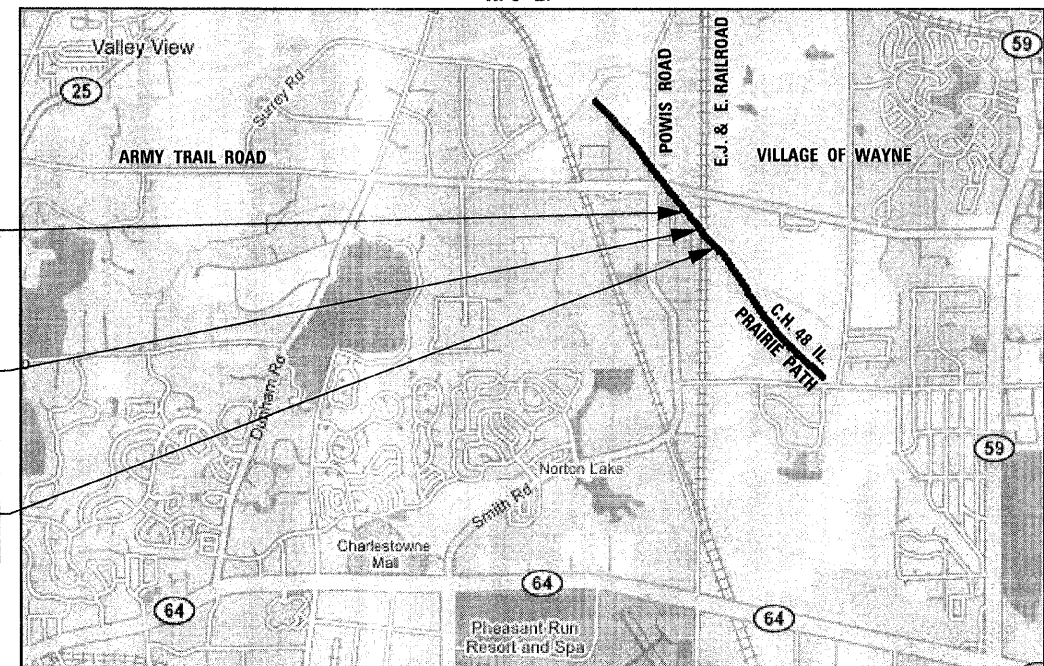


FULL SIZE PLANS HAVE BEEN PREPARED USING STANDARD ENGINEERING SCALES. REDUCED SIZED PLANS WILL NOT CONFORM TO STANDARD SCALES. IN MAKING MEASUREMENTS ON REDUCED PLANS, THE ABOVE SCALES MAY BE USED.

J.U.L.I.E.
JOINT UTILITY LOCATING INFORMATION FOR EXCAVATORS
1-800-892-0123
OR 811

FIELD ENGINEER - MARILIN SOLOMON
(847) 705-4407

CONTRACT NO. 63178



**PROJECT BEGINS
STA. 97 + 00**

**PROJECT LOCATION:
C.H. 48 IL. PRAIRIE PATH
OVER E.J. & E. R.R.**

**PROJECT ENDS
STA. 103 + 00**

**GROSS LENGTH OF PROJECT = 600.00 FEET = 0.114 MILES
NET LENGTH OF PROJECT = 600.00 FEET = 0.114 MILES**



LOCATION OF SECTION INDICATED THUS: - [black rectangle] -

STATE OF ILLINOIS
DEPARTMENT OF TRANSPORTATION
DIVISION OF HIGHWAYS

APPROVED April 3, 20 09
Charles F. Fohandi
DuPAGE COUNTY DIVISION OF TRANSPORTATION, COUNTY ENGINEER

PASSED JUNE 5, 2009
[Signature]
DISTRICT ONE ENGINEER OF LOCAL ROADS & STREETS

RELEASING FOR BID
BASED ON LIMITED REVIEW JUNE 5, 20 09
Diana M. O'Keefe
DEPUTY DIRECTOR OF HIGHWAYS, REGION ONE ENGINEER



Birinder S. Sachdeva April 2, 2009
BIRINDER S. SACHDEVA, P.E. DATE
EXPIRES: 11-30-2009

CR & A
CHRISTIAN-ROGE & ASSOCIATES, INC.
ENGINEERS - PLANNERS - SURVEYORS
211 W. WACKER DRIVE CHICAGO, IL 60606
TELEPHONE: 312-372-2023

**PRINTED BY THE AUTHORITY
OF THE STATE OF ILLINOIS**