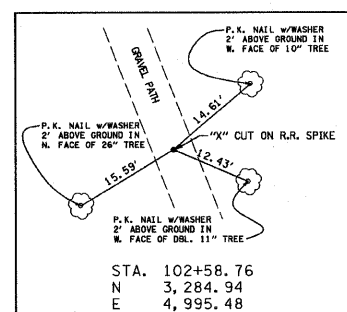
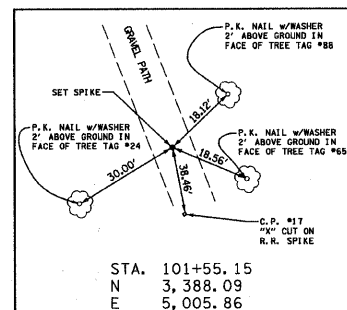
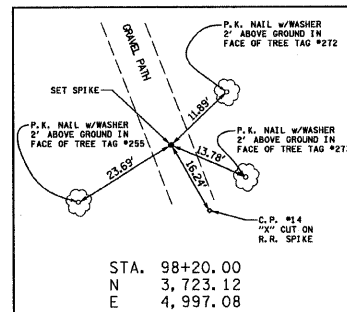
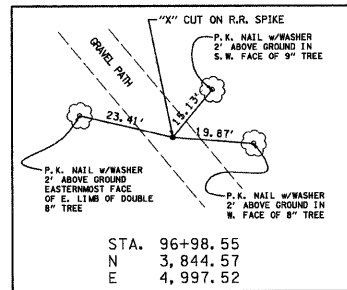
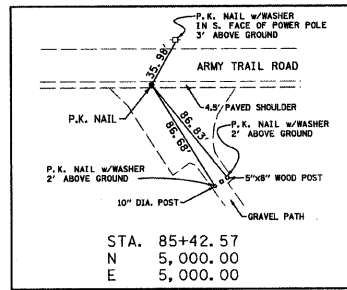


**CONTROL POINTS**



**BENCHMARKS**

DuPAGE COUNTY BENCHMARK WA18001 ELEV. 748.26  
BRONZE DISK IN THE SOUTH CONCRETE HEADWALL  
OF NORTON CREEK, 0.6 MILES NORTHWEST ALONG  
THE PRAIRIE PATH FROM POWIS ROAD

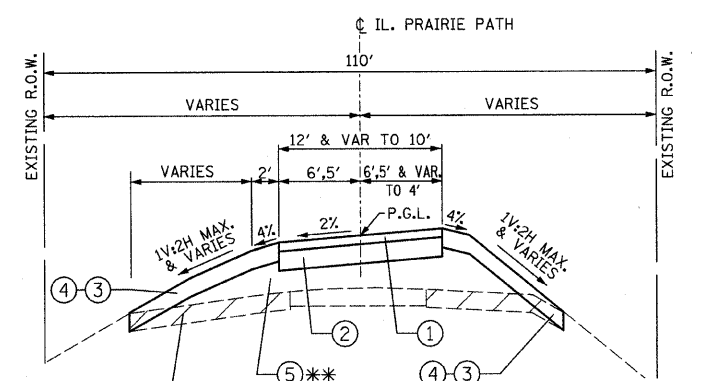
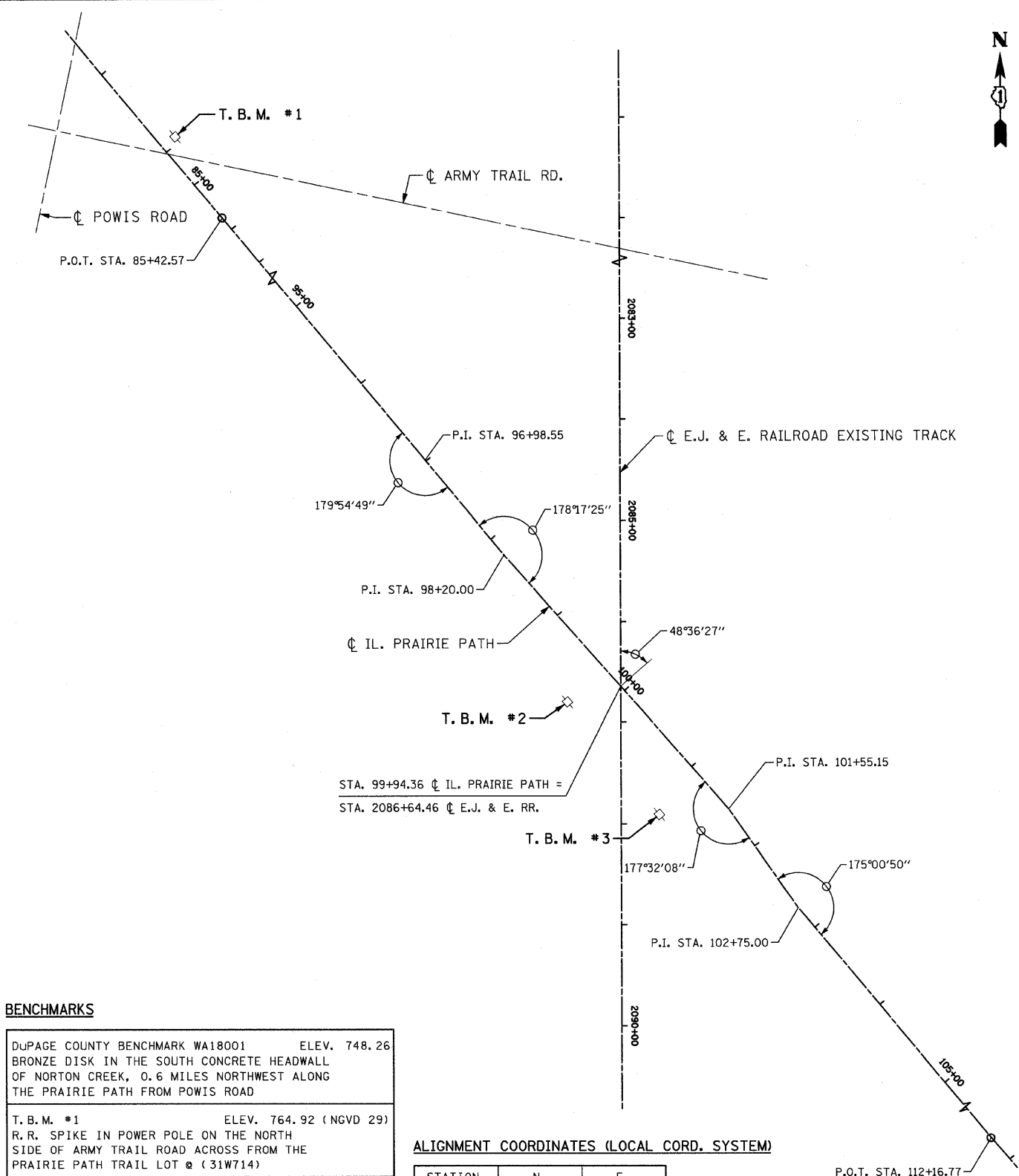
T. B. M. #1 ELEV. 764.92 (NGVD 29)  
R. R. SPIKE IN POWER POLE ON THE NORTH  
SIDE OF ARMY TRAIL ROAD ACROSS FROM THE  
PRAIRIE PATH TRAIL LOT @ (31W714)

T. B. M. #2 STA. 99+74, 50' RT. ELEV. 763.57  
R. R. SPIKE IN FIRST POWER POLE  
SOUTHWEST OF THE INTERSECTION OF  
THE RAILROAD TRACKS AND THE PRAIRIE PATH

T. B. M. #3 STA. 101+15, 55' RT. ELEV. 763.92  
R. R. SPIKE IN FIRST POWER POLE  
SOUTHEAST OF THE INTERSECTION OF  
THE RAILROAD TRACKS AND THE PRAIRIE PATH

**ALIGNMENT COORDINATES (LOCAL CORD. SYSTEM)**

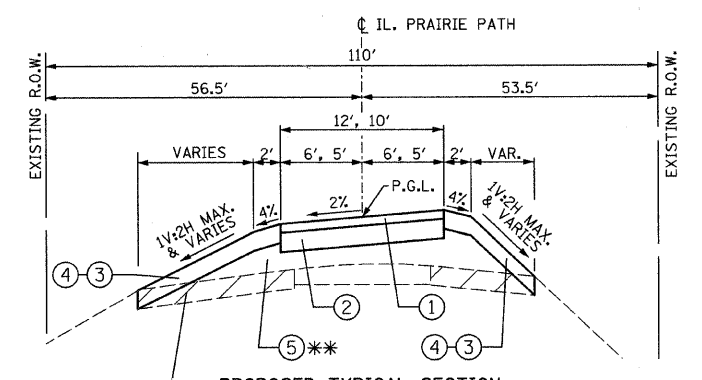
STATION	N	E
85+42.57	5,000.00	5,000.00
96+98.00	3,844.57	4,997.52
98+20.00	3,723.12	4,997.08
101+55.15	3,388.09	5,005.86
102+75.99	3,268.39	4,995.49
112+16.77	2,326.92	4,995.85



**PROPOSED TYPICAL SECTION**  
STA. 101+50 TO STA. 103+00  
**BRIDGE OMISSION:**  
STA. 98+25 TO STA. 101+50

1'± TOPSOIL STRIPPING (TYP.)  
PAID FOR AS "REMOVAL AND DISPOSAL OF UNSUITABLE MATERIAL"

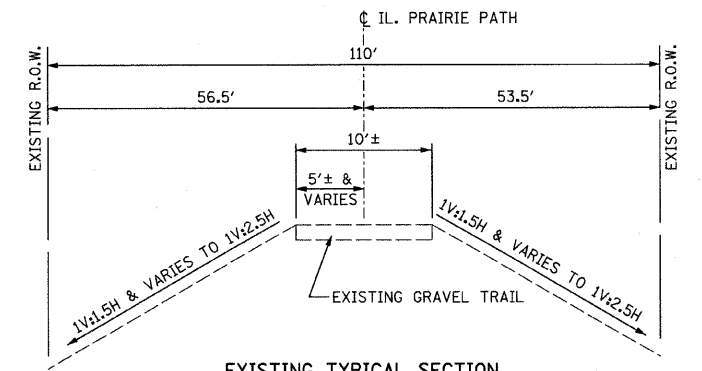
\*\* USE POROUS GRANULAR EMBANKMENT WHEN THE FILL DEPTH EXCEEDS 6"



**PROPOSED TYPICAL SECTION**  
STA. 97+00 TO STA. 98+25

1'± TOPSOIL STRIPPING (TYP.)  
PAID FOR AS "REMOVAL AND DISPOSAL OF UNSUITABLE MATERIAL"

\*\* USE POROUS GRANULAR EMBANKMENT WHEN THE FILL DEPTH EXCEEDS 6"



**EXISTING TYPICAL SECTION**  
STA. 97+00 TO STA. 98+25  
STA. 101+50 TO STA. 103+00

**LEGEND**

- ① AGGREGATE SURFACE COURSE, TYPE A, 2"
- ② AGGREGATE BASE COURSE, TYPE B, 4"
- ③ TOPSOIL FURNISH AND PLACE, 6"
- ④ EROSION CONTROL BLANKET & SEEDING, CLASS 4 (MODIFIED)
- ⑤ POROUS GRANULAR EMBANKMENT

FILE NAME = 98-00313-ah-typicol.dgn  
PLOT DATE = 6/2/2009

**CHRISTIAN-ROGE & ASSOCIATES, INC.**  
ENGINEERS-PLANNERS-SURVEYORS  
211 WEST WACKER DRIVE  
CHICAGO, ILLINOIS 60606  
PHONE: (312)372-2023 FAX: (312)372-5274

DESIGNED - S.J.P.  
DRAWN - A.C.S.  
CHECKED - E.J.M.  
DATE - JUNE 1, 2009

REVISED -  
REVISED -  
REVISED -  
REVISED -

**STATE OF ILLINOIS**  
**DEPARTMENT OF TRANSPORTATION**

**TYPICAL SECTIONS, ALIGNMENT & TIES**  
**IL. PRAIRIE PATH OVER E.J. & E. RAILROAD**

SCALE: NONE SHEET NO. 1 OF 1 SHEETS STA. 97+00 TO STA. 103+00

F.A.P. RTE.	SECTION	COUNTY	TOTAL SHEETS	SHEET NO.
	98-00313-00-BR	DuPAGE	25	4
CONTRACT NO. 63178				
FED. ROAD DIST. NO. 1   ILLINOIS FED. AID PROJECT				