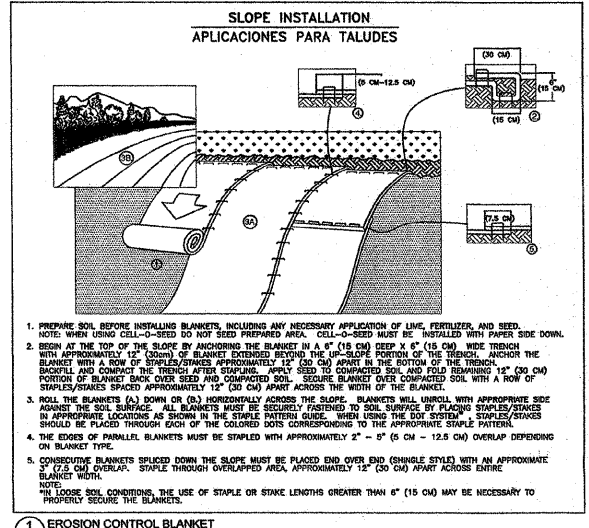
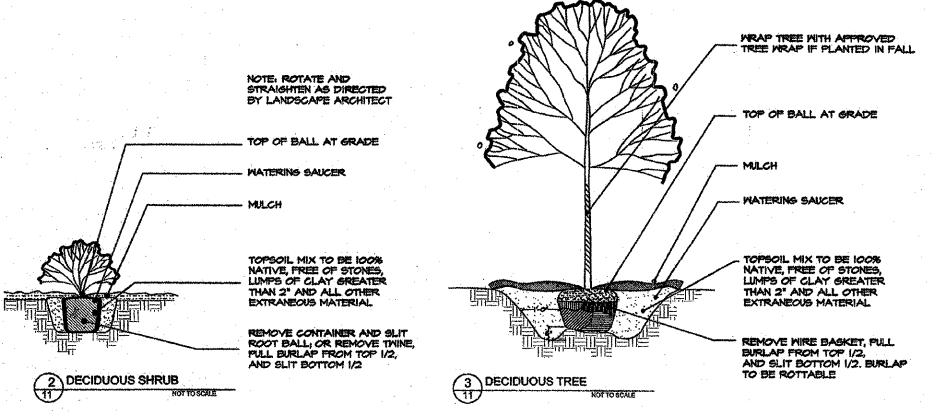


**LEGEND**

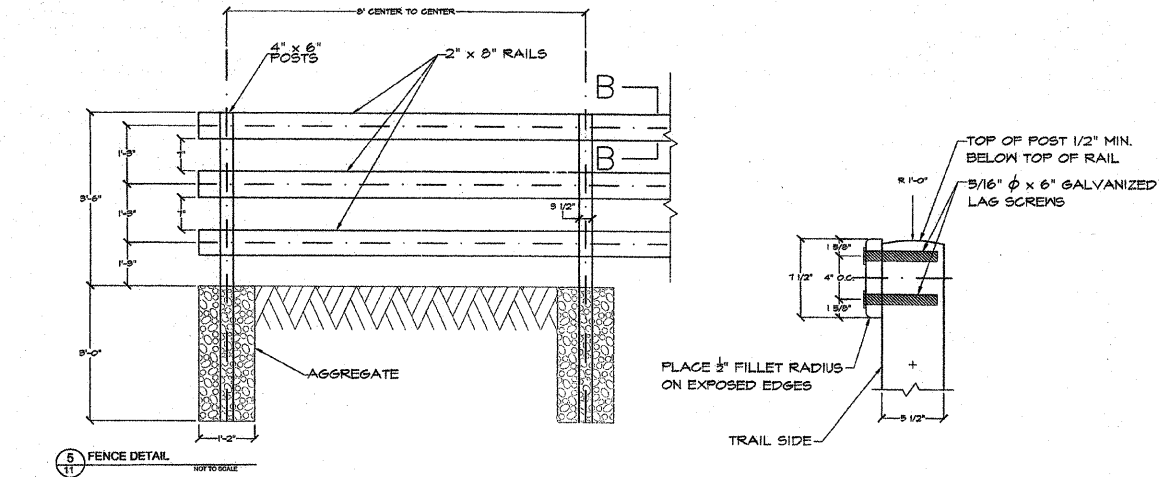
- EXISTING TREE
- PROPOSED DECIDUOUS TREE
- PROPOSED DECIDUOUS SHRUB
- SEEDING, CLASS 4, MODIFIED (.34 AC)
- RIP RAP (103.5 SQ. YD.)
- UNDISTURBED AREA
- CONSERVATION SIGNAGE (4)



11 EROSION CONTROL BLANKET NOT TO SCALE



11 DECIDUOUS SHRUB NOT TO SCALE      11 DECIDUOUS TREE NOT TO SCALE



11 FENCE DETAIL NOT TO SCALE

Tree & Shrub Plant List				
Symbol	Tree	Unit	Quantity	
CEOC	Tree, Celtis occidentalis (Common Hackberry), 1-1/2" Caliper, Balled & Burlapped	Each	6	
QUBI	Tree, Quercus bicolor (Swamp White Oak), 1-1/2" Caliper, Balled & Burlapped	Each	6	
QUMA	Tree, Quercus macrocarpa (Bur Oak), 1-1/2" Caliper, Balled & Burlapped	Each	8	
HAVI	Shrub, Hamamelis virginiana (Common Witchhazel), Container Grown, 5-Gallon	Each	13	
LIBE	Shrub, Lindera benzoin (Spicebush), Container Grown, 5-Gallon	Each	23	
PHOP	Shrub, Physocarpus opulifolius (Ninebark), Container Grown, 5-Gallon	Each	7	
RIMI	Shrub, Ribes missouriense (Wild Gooseberry), Container Grown, 5-Gallon	Each	65	
<b>Seeding List</b>				
N/A	Seeding, Class 4 (Modified)	AC	0.34	
Botanical Name				
	<i>Allium cernuum</i>	Common Name	Qty	Lbs/Acre
	<i>Andropogon gerardi</i>	Nodding Wild Onion	6	0.01
	<i>Andropogon scoparius</i>	Big Blue Stem	6	2.00
	<i>Arisaema triphyllum</i>	Little Blue Stem	8	4.00
	<i>Avena sativa</i>	Jack-in-the-Pulpit	13	0.03
	<i>Bouteloua curtipendula</i>	Seed Oats	23	32.00
	<i>Elymus canadensis</i>	Side Oats Grama	7	4.00
	<i>Hystrix patula</i>	Prairie Wild Rye	23	4.00
	<i>Panicum virgatum</i>	Bottlebrush Grass	7	0.01
	<i>Rudbeckia hirta</i>	Prairie Switch Grass	65	0.25
	<i>Sorghastrum nutans</i>	Black-eyed Susan	65	0.25
	subtotal	Indian Grass		2.00
				48.84

**PLANTING NOTES**

- All plant materials shall originate within 150 miles of the project site to maintain local genotypes.
- Plant installation shall be performed in accordance with supplier specifications.
- Qualified contractors with experience in native vegetation installation shall be used.
- Woody materials shall be installed without disturbing seeded areas.
- Rangeland drill seeding methodology at a depth less than 1/4 inch is generally the preferable seed installation methodology.
- If hand-broadcast seeding methodology is utilized, the seed quantities should be doubled.
- Erosion control blanket shall be installed on all exposed slopes.
- Copies of the nursery packing lists shall be provided to the engineer.

**TOPSOIL NOTES**

- A minimum of six inches of topsoil shall be spread throughout the seeding areas prior to vegetation installation.
- The soil shall be prepared by discing or rototilling prior to planting.

**LANDSCAPE NOTES**

- The existing trail to be abandoned shall have the top 6 inches of the trail removed, including any timber steps, minimum of 6 inches of topsoil and seeding shall be placed on the abandoned area.
- All disturbed areas shall be covered with seeding and erosion control blanket.

**WETLAND BUFFER NOTE**

- Due to the wetland buffer size and close proximity of the wetlands, the project area South of the EJ&E right-of-way is entirely within the wetland buffer, as such no buffer lines are shown in this area.