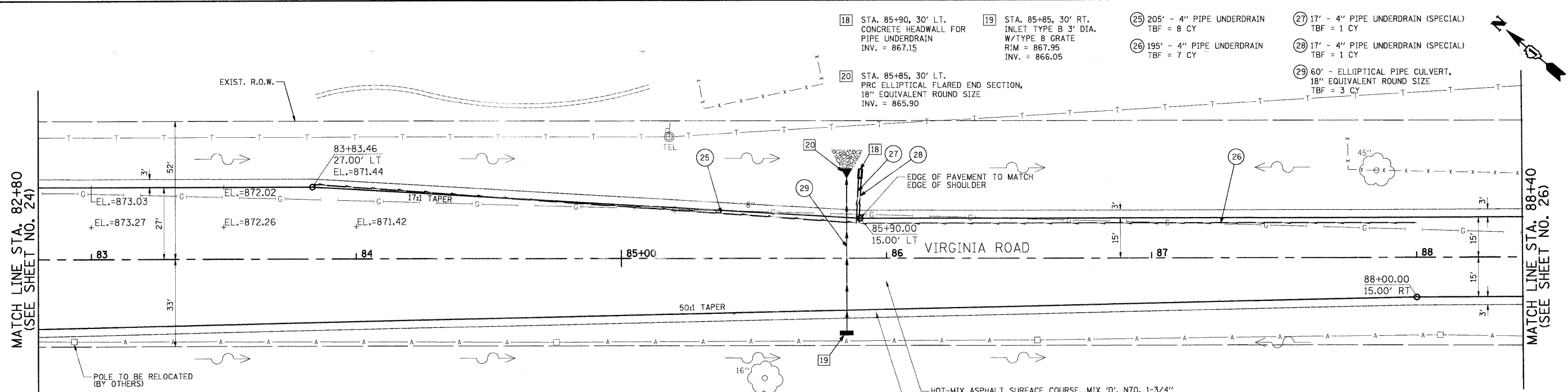


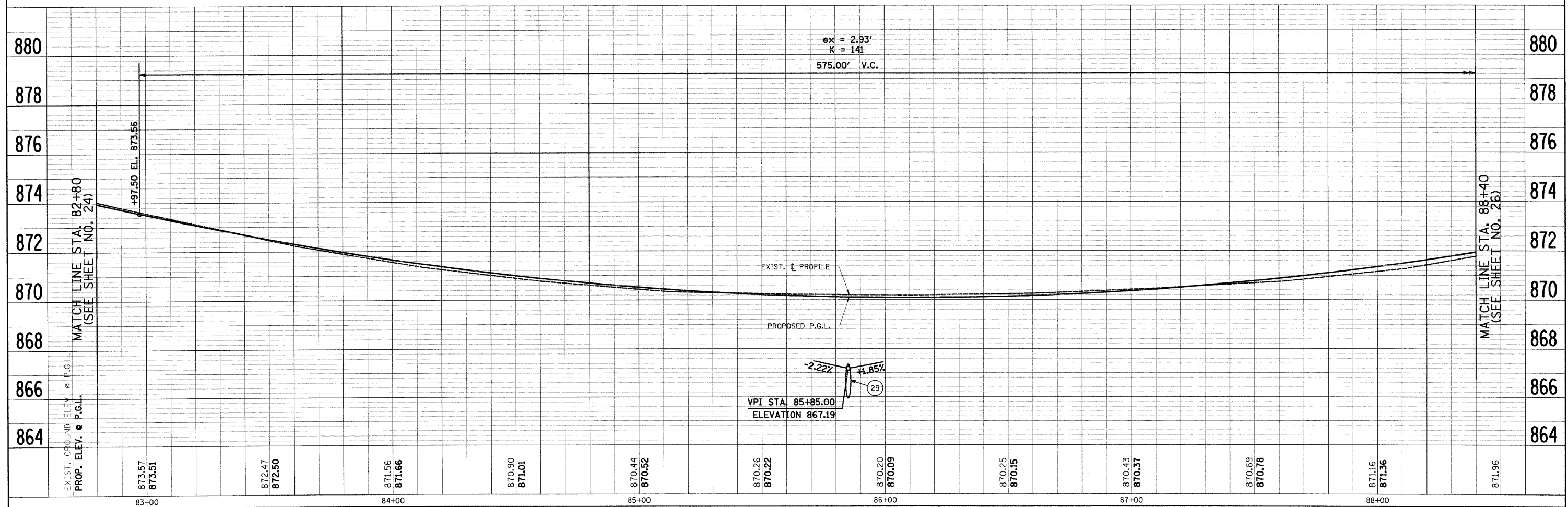
PLAN	SURVEYED	DATE
	BY	
	NO. OF WAY CHECKED	
	BY	
	NO. OF WAY CHECKED	
	BY	
	NO. OF WAY CHECKED	
	BY	
	NO. OF WAY CHECKED	
	BY	

PROFILE	SURVEYED	DATE
	BY	
	NO. OF WAY CHECKED	
	BY	
	NO. OF WAY CHECKED	
	BY	
	NO. OF WAY CHECKED	
	BY	
	NO. OF WAY CHECKED	
	BY	



- NOTES:
- EXISTING PAVEMENT TO BE REMOVED FROM EDGE OF PAVEMENT TO EDGE OF PAVEMENT AS SHOWN ON THE TYPICAL SECTIONS. AGGREGATE SHOULDER REMOVAL SHALL BE PAID FOR AS "EARTH EXCAVATION".
 - TRIM, SAW, OR OTHERWISE REMOVE ANY LOOSE, CRACKED OR UNSOUND EXISTING PAVEMENT TO PROVIDE A CLEAN FULL-DEPTH EDGE OF PAVEMENT SUBJECT TO APPROVAL OF THE MCHENRY COUNTY DIVISION OF TRANSPORTATION (COST INCLUDED IN THE COST OF THE HOT-MIX ASPHALT BEING PLACED).

HOT-MIX ASPHALT SURFACE COURSE, MIX 'D', N70, 1-3/4"
HOT-MIX ASPHALT BINDER COURSE, IL-19.0, N70, 2-1/4"
HOT-MIX ASPHALT BINDER COURSE, N50, 9-1/2"
AGGREGATE SHOULDER, TYPE B, 8"



FILE NAME = j:\2211\road\sheet\2211-sh1-pp14.dgn	USER NAME = ara	DESIGNED - RJD	REVISED -	STATE OF ILLINOIS DEPARTMENT OF TRANSPORTATION	PLAN & PROFILE VIRGINIA ROAD		F.A. RTE. 0121	SECTION 03-00362-00-PV	COUNTY MCHENRY	TOTAL SHEETS 54	SHEET NO. 25	
PLOT SCALE = 20.00' / IN.	CHECKED - GAB	REVISED -	SCALE: 1"=20'		SHEET NO. 14 OF 15 SHEETS	STA. 82+80	TO STA. 88+40	CONTRACT NO. 63195				
PLOT DATE = 5/27/2009	DATE - 5-28-09	REVISED -	FED. ROAD DIST. NO. ILLINOIS FED. AID PROJECT: M-9003(255)									