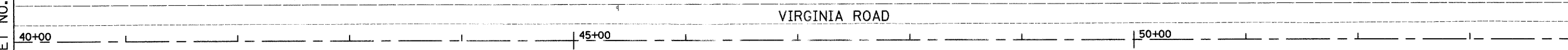


MATCH LINE STA 40+00
(SEE SHEET NO. 27)

MATCH LINE STA 54+00



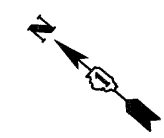
VIRGINIA ROAD

GENERAL NOTES

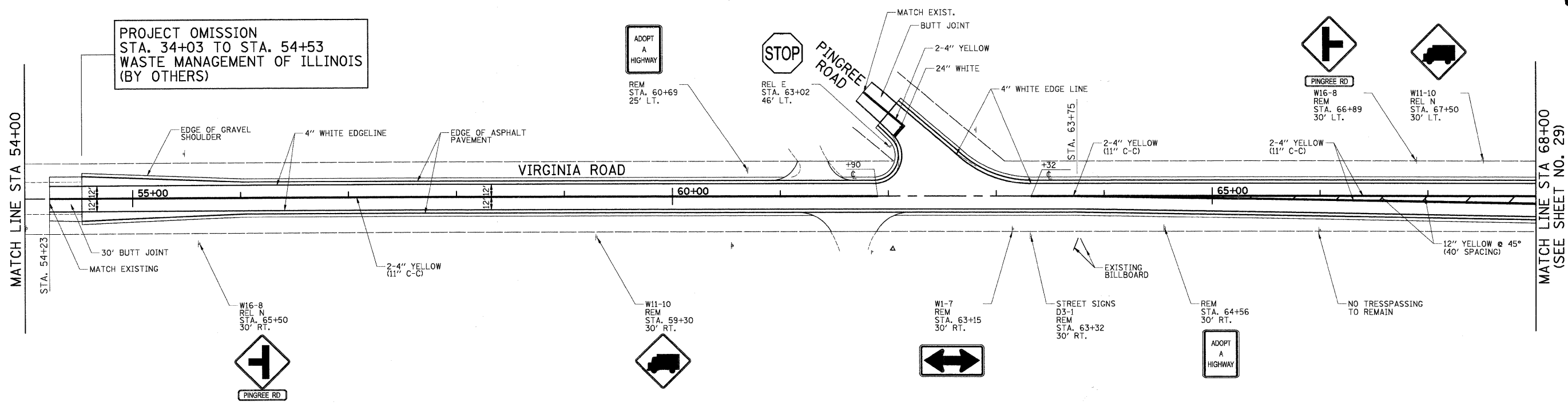
- DIMENSIONS TO PAVEMENT MARKINGS ARE TO THE CENTER OF A SINGLE LINE OR THE CENTER OF GAP FOR A DOUBLE LINE.
- SEE I.D.O.T. DETAIL TC-13 (SHEET NO. 37) FOR TURN LANE MARKING DETAILS.
- ALL PERMANENT PAVEMENT MARKINGS SHALL BE THERMOPLASTIC UNLESS OTHERWISE INDICATED.
- SEE SHEET NO. 3 FOR ADDITIONAL SIGNING REQUIREMENTS.
- REMOVE ANY CONFLICTING RAISED/RECESSED REFLECTIVE PAVEMENT MARKERS WITHIN THE PROJECT LIMITS ON VIRGINIA ROAD.
- INSTALL NEW RECESSED REFLECTIVE PAVEMENT MARKERS IN ACCORDANCE WITH I.D.O.T. DETAIL TC-11 (SHEET NO. 36).

LEGEND

- REM SIGN PANEL ASSEMBLY TO REMAIN
- NEW SIGN PANEL TYPE 1 AND TELESCOPING STEEL SIGN SUPPORT (SPECIAL)
- REL E RELOCATE SIGN PANEL ASSEMBLY, TYPE A AND EXISTING SIGN SUPPORT
- REL N RELOCATE SIGN PANEL ASSEMBLY, TYPE A AND NEW TELESCOPING STEEL SIGN SUPPORT (SPECIAL)
- EXISTING SIGN
- PROPOSED SIGN
- PROPOSED WHITE LETTERS AND SYMBOLS



PROJECT OMISSION
STA. 34+03 TO STA. 54+53
WASTE MANAGEMENT OF ILLINOIS
(BY OTHERS)



MATCH LINE STA 68+00
(SEE SHEET NO. 29)

FILE NAME = j:\2211\road\sheet\2211-sht-sign-stripe2.dgn	USER NAME = ara	DESIGNED - RJD	REVISED -	STATE OF ILLINOIS DEPARTMENT OF TRANSPORTATION	STRIPING AND SIGNING PLAN VIRGINIA ROAD			F.A. RTE.	SECTION	COUNTY	TOTAL SHEETS	SHEET NO.
	PLOT SCALE = 50.00' / IN.	DRAWN - ARA	REVISED -					0121	03-00362-00-PV	MCHENRY	54	28
PLOT DATE = 5/27/2009	CHECKED - GAB	DATE - 5-28-09	REVISED -	SCALE: 1"=50' SHEET NO. 2 OF 3 SHEETS STA. 40+00 TO STA. 68+00			CONTRACT NO. 63195					
							FED. ROAD DIST. NO. ILLINOIS FED. AID PROJECT: M-9003(255)					