

F.A.S. RTE.	SECTION	COUNTY	TOTAL SHEETS	SHEET NO.
0026	02-00269-00-BR	MCHENRY	153	1

D-91-318-02

STATE OF ILLINOIS
DEPARTMENT OF TRANSPORTATION
DIVISION OF HIGHWAYS

**PLANS FOR PROPOSED
FEDERAL AID HIGHWAY PROJECT**

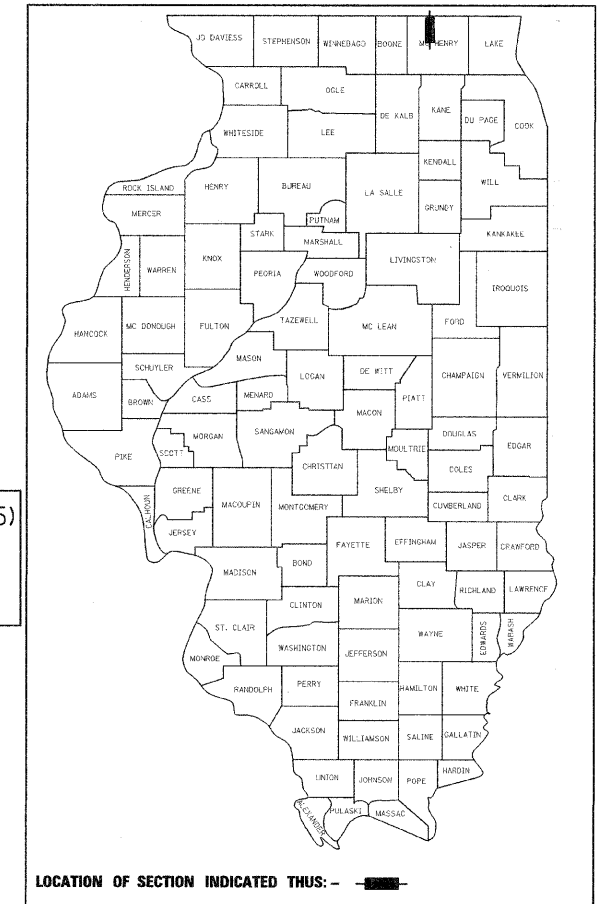
FAS ROUTE 0026 ALDEN ROAD
BRIDGE AND ROADWAY IMPROVEMENTS
SECTION 02-00269-00-BR
PROJECT BRS-0026(105)
MCHENRY COUNTY
JOB NO. C-91-318-02

FOR INDEX OF SHEETS, SEE SHEET NO. 2

PROJECT IS LOCATED IN THE CITY OF ALDEN

EXISTING STRUCTURE NUMBER: 056-3005
PROPOSED STRUCTURE NUMBER: 056-3174

PROJECT BRS-0026 (105)
PROJECT ENDS
ALDEN ROAD
STATION 129+61



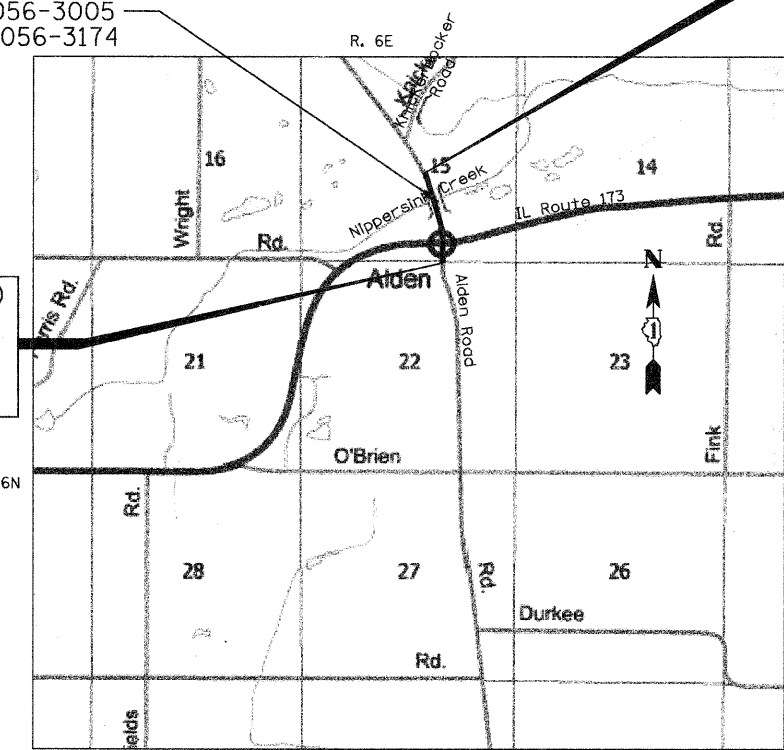
DESCRIPTION OF IMPROVEMENT

THIS IMPROVEMENT CONSISTS OF ROADWAY RECONSTRUCTION, BRIDGE RECONSTRUCTION, STORM SEWER AND DRAINAGE STRUCTURE ADJUSTMENTS AND INSTALLATION, LANDSCAPING, STRIPING, AND ALL INCIDENTAL AND COLLATERAL WORK AS NECESSARY TO COMPLETE THE IMPROVEMENT SHOWN HEREIN AND AS DESCRIBED IN THE SPECIFICATIONS.

PROJECT BRS-0026 (105)
PROJECT BEGINS
ALDEN ROAD
STATION 106+25

DESIGN DESIGNATION

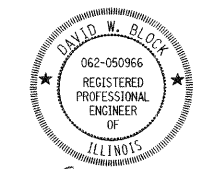
ALDEN ROAD:
2,025 (10) COLLECTOR
T.F. = 0.18 (FD-20)
DESIGN SPEED: 35 MPH
POSTED SPEED: 35 MPH



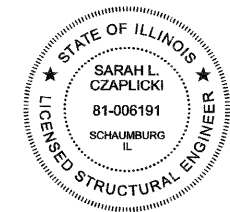
LOCATION MAP

NOT TO SCALE

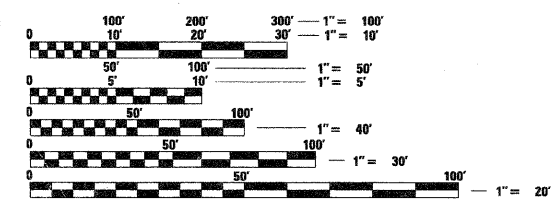
PROJECT LENGTH (GROSS /NET)
ALDEN ROAD 2,336 FT (0.442 MILES)



David W. Block 5-28-09
DAVID W. BLOCK, P.E.
NO. 062-050966
EXP. DATE 11/30/09



Sarah L. Czapliski 05/18/09
SARAH L. CZAPLICKI, P.E., S.E.
NO. 81-006191
EXP. DATE 11/30/2010



FULL SIZE PLANS HAVE BEEN PREPARED USING STANDARD ENGINEERING SCALES. REDUCED SIZED PLANS WILL NOT CONFORM TO STANDARD SCALES. IN MAKING MEASUREMENTS ON REDUCED PLANS, THE ABOVE SCALES MAY BE USED.

J.U.L.I.E.
JOINT UTILITY LOCATION INFORMATION FOR EXCAVATION
1-800-892-0123

CONTRACT NO. 63212

STATE OF ILLINOIS
DEPARTMENT OF TRANSPORTATION
DIVISION OF HIGHWAYS

APPROVED *May 26, 2009*
Joseph R. Kropieski Jr.
MCHENRY COUNTY, COUNTY ENGINEER

PASSED *August 31, 2009*
Jeff Christoffel
DISTRICT 1 ENGINEER OF LOCAL ROADS & STREETS

RELEASING FOR BID
BASED ON LIMITED
REVIEW *SEPTEMBER 1, 2009*
Diane M. O'Keefe
DEPUTY DIRECTOR OF HIGHWAYS, REGION 1 ENGINEER

**PRINTED BY THE AUTHORITY
OF THE STATE OF ILLINOIS**

IDOT FEDERAL AID DESIGN ENGINEER
KEVIN STALLWORTH 847/705-4169

1051 PERIMETER DRIVE, SUITE 1025
SCHAUMBURG, ILLINOIS 60173
(847) 605-9600

