

- NOTES:
 1. TRANSITION CURB HEIGHT FROM 0" AT STA 106+25 TO 6" AT STA 106+30, LT AND RT
 2. P = PROPERTY LINE
 3. PROPOSED DRIVEWAY LIMITS SHALL EXTEND TO WITHIN 1' OF EXIST ROW OR TEMPORARY EASEMENT LINES

STABILIZED DRIVEWAYS 6", 38 SQ YD
 HMA SURFACE COURSE, MIX "C", N50, 2"
 HMA BASE COURSE, 4"
 SUB-BASE GRANULAR MATERIAL TYPE B, 4", 38 SQ YD
 DEPRESS CURB STA 106+71 TO 107+12

STABILIZED DRIVEWAYS 6", 43 SQ YD
 HMA SURFACE COURSE, MIX "C", N50, 2"
 HMA BASE COURSE, 4"
 SUB-BASE GRANULAR MATERIAL TYPE B, 4", 43 SQ YD
 DEPRESS CURB STA 107+43 TO 107+91

STABILIZED DRIVEWAYS 6", 30 SQ YD
 HMA SURFACE COURSE, MIX "C", N50, 2"
 HMA BASE COURSE, 4"
 SUB-BASE GRANULAR MATERIAL TYPE B, 4", 30 SQ YD
 DEPRESS CURB STA 109+99 TO 110+39

STABILIZED DRIVEWAYS 6", 33 SQ YD
 HMA SURFACE COURSE, MIX "C", N50, 2"
 HMA BASE COURSE, 4"
 SUB-BASE GRANULAR MATERIAL TYPE B, 4", 33 SQ YD
 DEPRESS CURB STA 108+54 TO 108+97

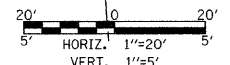
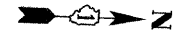
HMA PAVEMENT (FULL DEPTH) 8", 1,408 SQ YD
 HMA SURFACE COURSE, MIX "D", N70, 2"
 HMA BINDER COURSE, IL-19.0, N70, 6"
 AGGREGATE SUBGRADE 12", 1,747 SQ YD

STABILIZED DRIVEWAYS 6", 12 SQ YD
 HMA SURFACE COURSE, MIX "C", N50, 2"
 HMA BASE COURSE, 4"
 SUB-BASE GRANULAR MATERIAL TYPE B, 4", 12 SQ YD

STABILIZED DRIVEWAYS 6", 43 SQ YD
 HMA SURFACE COURSE, MIX "C", N50, 2"
 HMA BASE COURSE, 4"
 SUB-BASE GRANULAR MATERIAL TYPE B, 4", 43 SQ YD

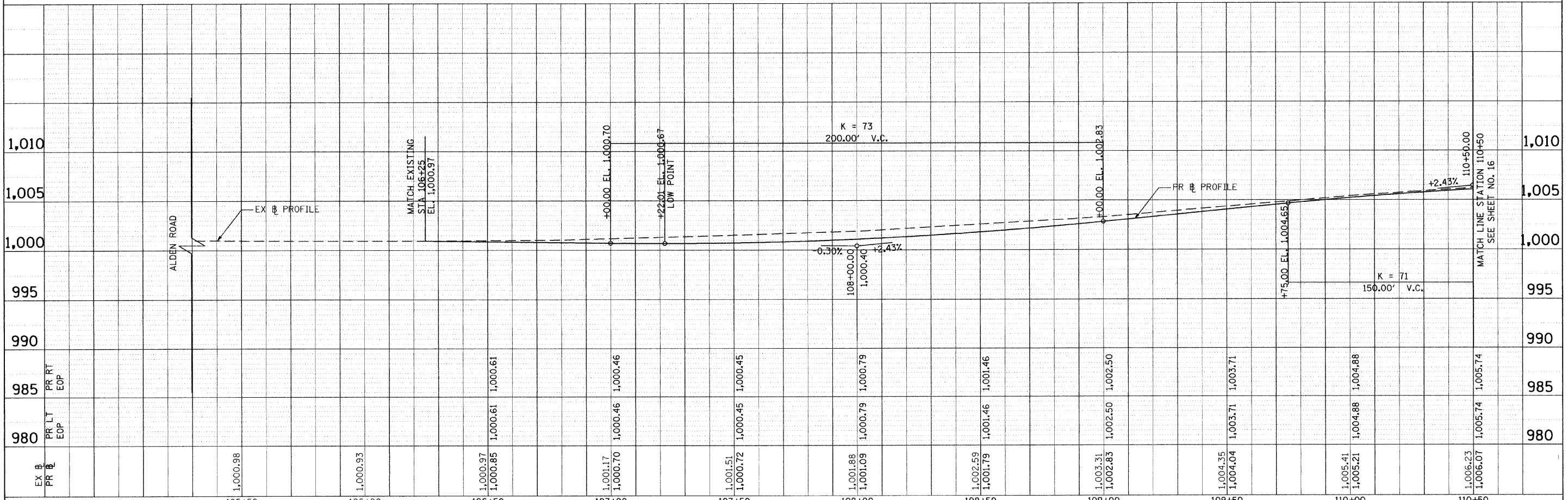
STABILIZED DRIVEWAYS 6", 34 SQ YD
 HMA SURFACE COURSE, MIX "C", N50, 2"
 HMA BASE COURSE, 4"
 SUB-BASE GRANULAR MATERIAL TYPE B, 4", 34 SQ YD
 DEPRESS CURB STA 107+63 TO 108+04

STABILIZED DRIVEWAYS 6", 30 SQ YD
 HMA SURFACE COURSE, MIX "C", N50, 2"
 HMA BASE COURSE, 4"
 SUB-BASE GRANULAR MATERIAL TYPE B, 4", 30 SQ YD
 DEPRESS CURB STA 108+56 TO 108+97



PLAN	SURVEYED	DATE
	BY	
	CHECKED	
	DATE	
	NO.	

PROFILE	SURVEYED	DATE
	BY	
	CHECKED	
	DATE	
	NO.	



FILE NAME = g:\ch24\0803\road\Sheets\PP-281.sh	USER NAME = DEComm	DESIGNED - RPJ	REVISED -	STATE OF ILLINOIS DEPARTMENT OF TRANSPORTATION				ALDEN ROAD PLAN AND PROFILE				F.A. RTE. = 0026	SECTION = 02-00269-00-BR	COUNTY = MCHENRY	TOTAL SHEETS = 153	SHEET NO. = 15
PLOT SCALE = 20.000' / IN.	CHECKED - DWB	REVISED -	REVISED -									SCALE:	SHEET NO. 1 OF 5 SHEETS	STA. 106+25 TO STA. 110+50	FED. ROAD DIST. NO. = ILLINOIS	CONTRACT NO. 63212
PLOT DATE = 8/25/2009	DATE = 08/25/2009	REVISED -	REVISED -	ILLINOIS FED. AID PROJECT												