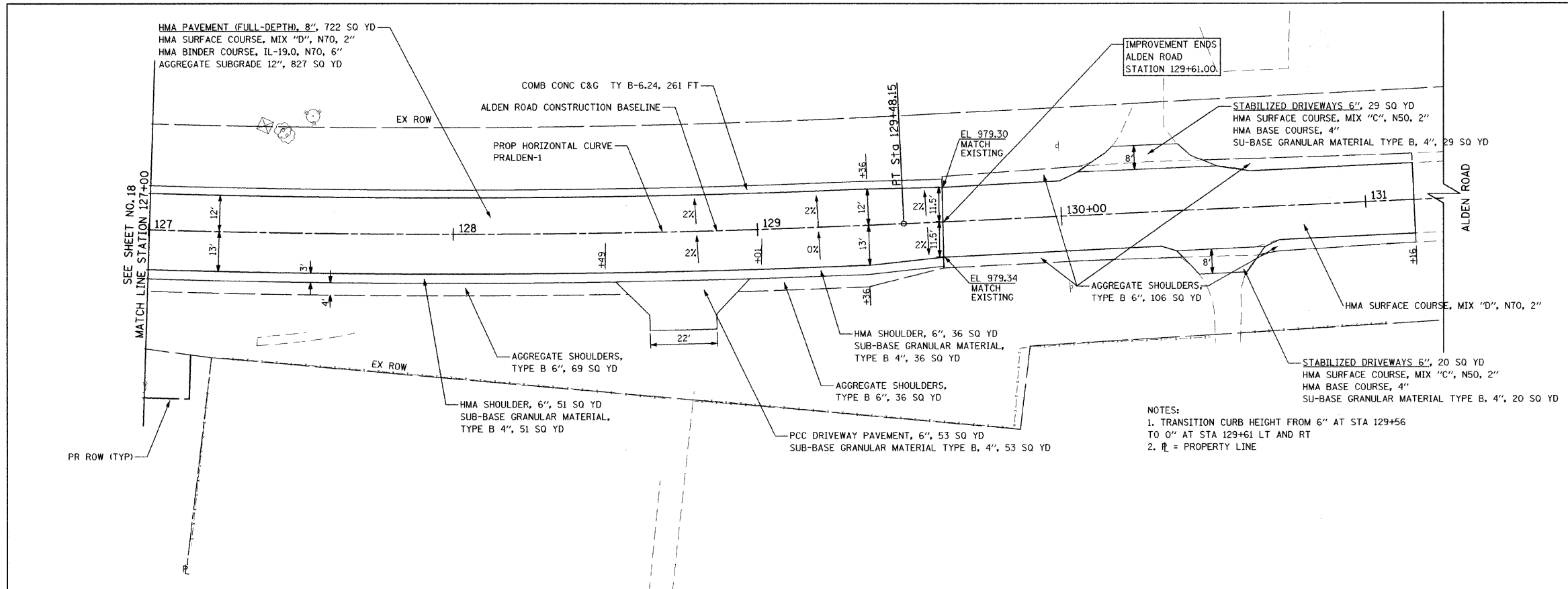


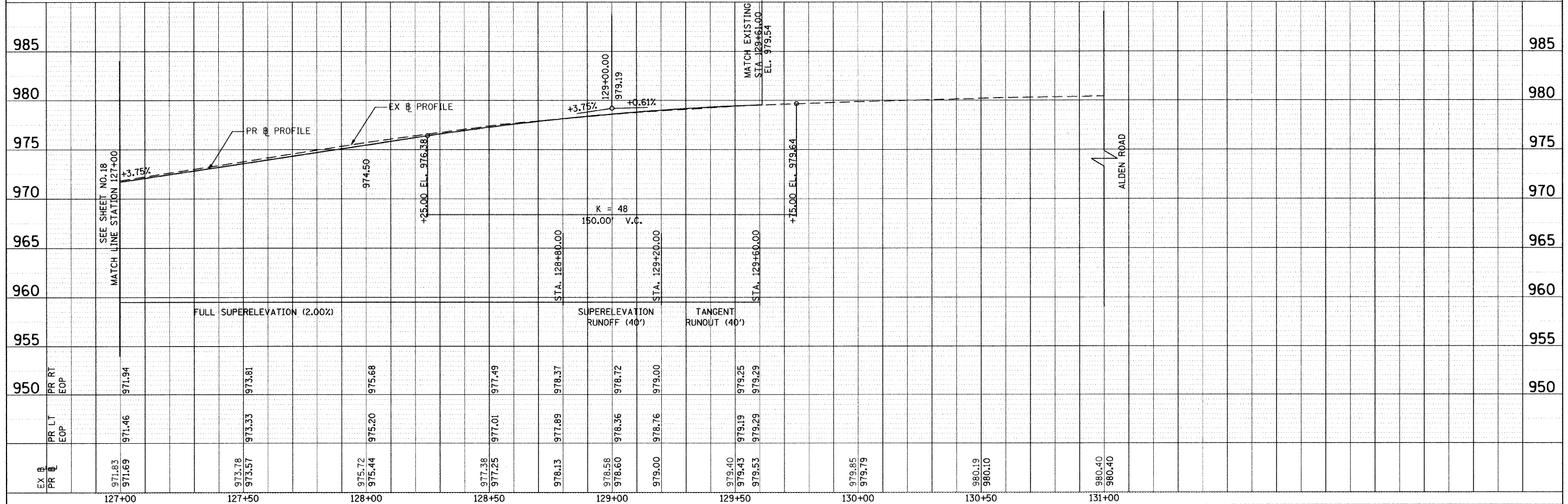
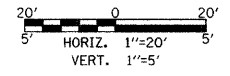
PLAN	SURVEYED	DATE
	PLOTTED	BY
	CHECKED	
	REVISIONS	
	NO. OF MAY CHECKED	
	CAD FILE NAME	
	NO.	

PROFILE	SURVEYED	DATE
	PLOTTED	BY
	CHECKED	
	REVISIONS	
	NO. OF MAY CHECKED	
	CAD FILE NAME	
	NO.	



**PROP. CURVE PRALDEN-1**  
 PI STA. = 123+95.03  
 $\Delta = 20^\circ 20' 16''$  (LT)  
 $D = 1^\circ 49' 08''$   
 $R = 3,150.00'$   
 $T = 565.01'$   
 $L = 1,118.12'$   
 $E = 50.27'$   
 $e = 2.00\%$   
 $T.R. = 40.00'$   
 $S.E. RUN = 40.00'$   
 P.C. STA = 118+30.03  
 P.T. STA = 129+48.15

NOTES:  
 1. TRANSITION CURB HEIGHT FROM 6" AT STA 129+56 TO 0" AT STA 129+61 LT AND RT  
 2.  $\text{P.L.}$  = PROPERTY LINE



FILE NAME = g:\CH04\0003\Road\Sheets\PP-205.SHT  
 USER NAME = dwblock  
 PLOT SCALE = 20,000' / IN.  
 PLOT DATE = 6/1/2009

DESIGNED - RPJ	REVISED -
DRAWN - RPJ	REVISED -
CHECKED - DWB	REVISED -
DATE - 05/29/2009	REVISED -

**STATE OF ILLINOIS**  
**DEPARTMENT OF TRANSPORTATION**

**ALDEN ROAD**  
**PLAN AND PROFILE**  
 SCALE: SHEET NO. 5 OF 5 SHEETS STA. 127+00 TO STA. 131+00

F.A. RTE. 0026	SECTION 02-00269-00-BR	COUNTY MCHENRY	TOTAL SHEETS 153	SHEET NO. 19
FED. ROAD DIST. NO. ILLINOIS FED. AID PROJECT			CONTRACT NO. 63212	