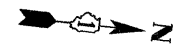


SCHEDULE OF STORM SEWER STRUCTURES:

STR. NO.	STATION	OFFSET (FT)	TYPE	FRAME & GRATE	RIM ELEV.	NORTH EAST	NORTH WEST	SOUTH EAST	SOUTH WEST	EAST	WEST	SOUTH	NORTH
3-1	120+25	33 RT	INL TYPE A	TYPE B G	960.50		958.15						
3-2	116+72	13.06 RT	CB TYPE A, 4' DIA.	T24 F & G	982.72		978.25						
3-3	116+89	12.75 LT	CB TYPE A, 4' DIA.	T24 F & G	981.43		977.98	977.98					
3-4	117+00	22 LT	MH TA 4DIA	T1 F, CL	981.79		977.88	977.88				973.12	971.12
3-5	120+36	26 RT	CB TYPE C	T1 F, CL	961.70		958.04	958.04		958.04			
3-6	120+34	23 LT	MH TA 4DIA	T1 F, CL	962.40		957.81	957.81		958.41		957.61	
3-7	118+10	12 RT	CB TYPE A, 4' DIA.	T24 F & G	973.17		966.94	966.94					
3-8	118+65	12 LT	CB TYPE A, 4' DIA.	T24 F & G	969.73		966.38	966.38			965.54		
3-9	118+65	22.6 LT	MH TA 4DIA	T1 F, CL	970.50		965.47	965.47		965.44		963.44	
3-10	118+90	33 RT	INL TYPE A	TYPE B G	965.50		961.84	961.84		961.84		961.84	
3-11	119+16.5	31.7 RT	INL TYPE B	T24 F & G	964.76		961.60	961.60		961.50		961.50	
3-12	119+30	31.9 RT	INL TYPE B	T24 F & G	964.52		961.39	961.39		961.29		961.29	
3-13	119+50	29.7 RT	INL TYPE B	TYPE B G	963.31		961.02	961.02		961.20		959.20	
3-14	119+88	22.6 LT	MH TA 4DIA	T1 F, CL	964.20		960.41	960.41		961.20		959.20	
3-15	120+90	26 RT	INL TYPE A	TYPE B G	959.45		957.95	957.95		957.95			
3-16	120+90	12 LT	CB TYPE A, 4' DIA.	T24 F & G	961.13		957.61	957.61		957.61			
3-17	120+90	22.6 LT	MH TA 4DIA	T1 F, CL	960.25		957.54	957.54		957.54			
3-18	121+00	22.4 LT	MH TA 6DIA W RESTRICTOR PLATE	T1 F, CL	960.75		957.35	957.35		957.35		957.15	
3-19	121+10	24.4 LT	TREATMENT STRUCTURE	T1 F, CL	960.50		957.12	957.12		957.12		957.00	
3-20	121+50	32.2 LT	PRC FL END SECT 18"	T1 F, CL	960.50		956.76	956.76		956.76		957.00	
3-21	117+80	22 LT	MH TA 4DIA	T1 F, CL	975.92		969.33	969.33		969.33		967.33	

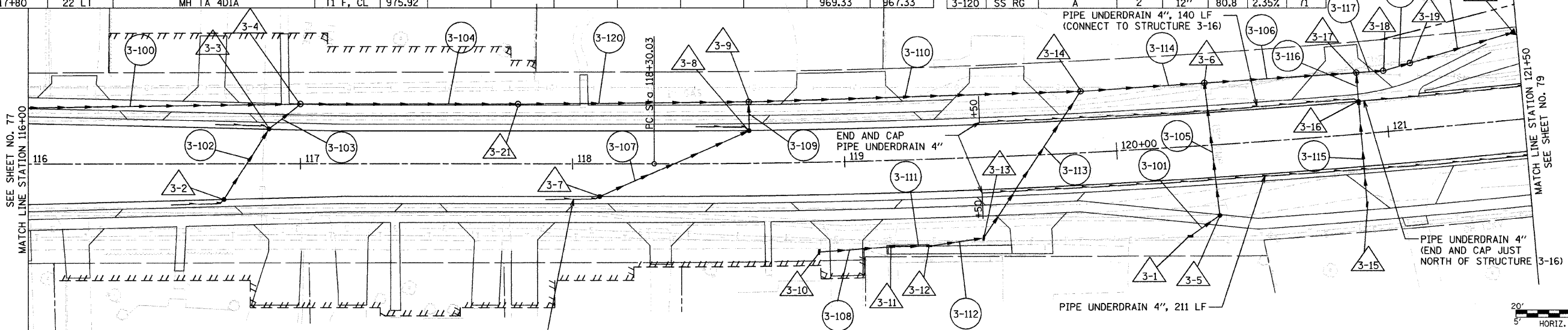
SCHEDULE OF STORM SEWER PIPES:

PIPE NO.	ITEM	CLASS	TYPE	SIZE	LENGTH (FT)	SLOPE	TBF (CU YD)
3-100	SS RG	A	2	12"	102	2.90%	148
3-101	SS RG	A	1	12"	11	1.00%	2
3-102	SS RG	A	1	12"	26.7	1.00%	7
3-103	SS RG	A	1	12"	10.8	1.00%	4
3-104	SS RG	A	2	12"	76	2.35%	89
3-105	SS RG	A	1	15"	46	0.50%	13
3-106	SS RG	A	1	18"	51.9	0.50%	19
3-107	SS RG	A	2	12"	56	1.00%	23
3-108	SS RG	A	1	12"	24.3	1.00%	5
3-109	SS RG	A	2	12"	6.6	1.00%	4
3-110	SS RG	A	2	15"	117.9	1.90%	58
3-111	SS RG	A	1	12"	10.6	1.00%	4
3-112	SS RG	A	1	12"	17.3	1.00%	4
3-113	SS RG	A	1	12"	61.1	1.00%	7
3-114	SS RG	A	2	15"	41.6	1.90%	23
3-115	SS RG	A	1	12"	35	1.00%	2
3-116	SS RG	A	1	12"	6.6	1.00%	3
3-117	SS RG	A	1	18"	4.9	0.65%	2
3-118	SS RG	A	1	18"	4.7	0.65%	2
3-119	SS RG	A	1	18"	31.8	0.65%	0
3-120	SS RG	A	2	12"	80.8	2.35%	71



PLAN	SURVEYED	DATE
	BY	
	PLOTTED	
	DATE	
	BY	
	NOTE BOOK	
	NO.	
	FILE NAME	

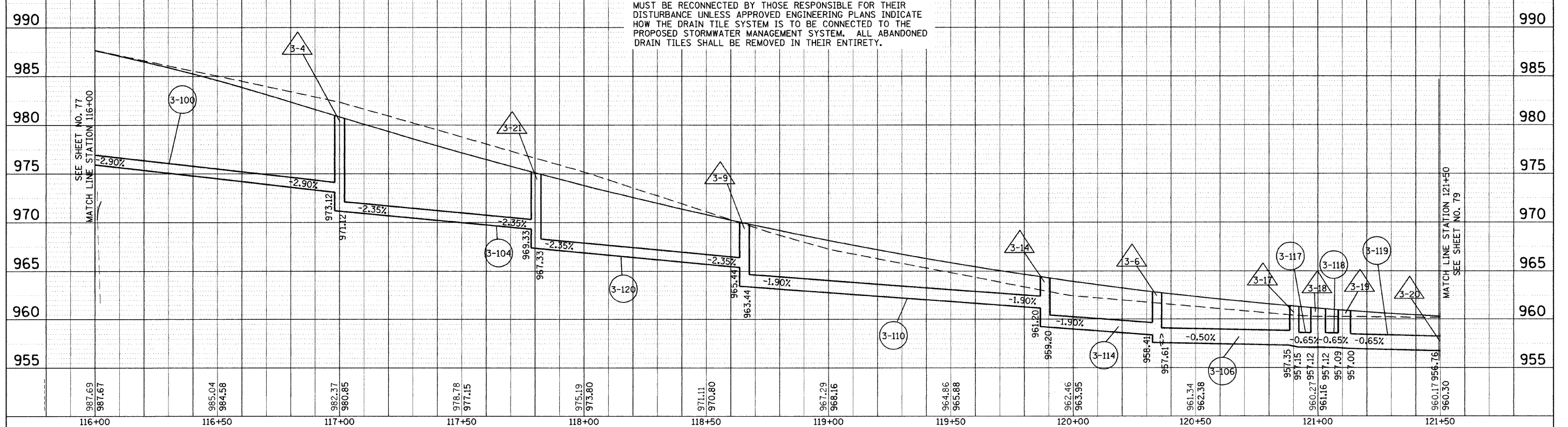
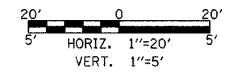
PROFILE	SURVEYED	DATE
	BY	
	PLOTTED	
	DATE	
	BY	
	NOTE BOOK	
	NO.	
	STRUCTURE NOTATIONS	



- STATION/OFFSET/ELEVATION TO CENTER OF END SECTION TOE OF BLOCK.
- TYPE 1 FRAME TO BE 6" HEAVY DUTY FRAME.

PIPE UNDERDRAIN, 4" 20' (TYP)

NOTE: SEE REMOVAL PLAN FOR EXISTING ITEMS TO BE REMOVED. DRAIN TILE SYSTEMS DISTURBED DURING DEVELOPMENT MUST BE RECONNECTED BY THOSE RESPONSIBLE FOR THEIR DISTURBANCE UNLESS APPROVED ENGINEERING PLANS INDICATE HOW THE DRAIN TILE SYSTEM IS TO BE CONNECTED TO THE PROPOSED STORMWATER MANAGEMENT SYSTEM. ALL ABANDONED DRAIN TILES SHALL BE REMOVED IN THEIR ENTIRETY.



FILE NAME : g:\ch04\0083\road\Sheets\DU-303.SHT	USER NAME : CECComm	DESIGNED - CEC	REVISED -	STATE OF ILLINOIS DEPARTMENT OF TRANSPORTATION	ALDEN ROAD DRAINAGE AND UTILITIES PLAN			F.A. RTE. : 0026	SECTION : 02-00269-00-BR	COUNTY : MCHENRY	TOTAL SHEETS : 153	SHEET NO. : 78
	PLLOT SCALE : 20.000' / IN.	DRAWN - CEC	REVISED -		SCALE :	SHEET NO. 3 OF 5 SHEETS	STA. 116+00 TO STA. 121+50	CONTRACT NO. 63212				
	PLLOT DATE : 9/28/2009	CHECKED - DWB	REVISED -		FED. ROAD DIST. NO. [ILLINOIS] FED. AID PROJECT							
		DATE : 09/28/2009	REVISED -									