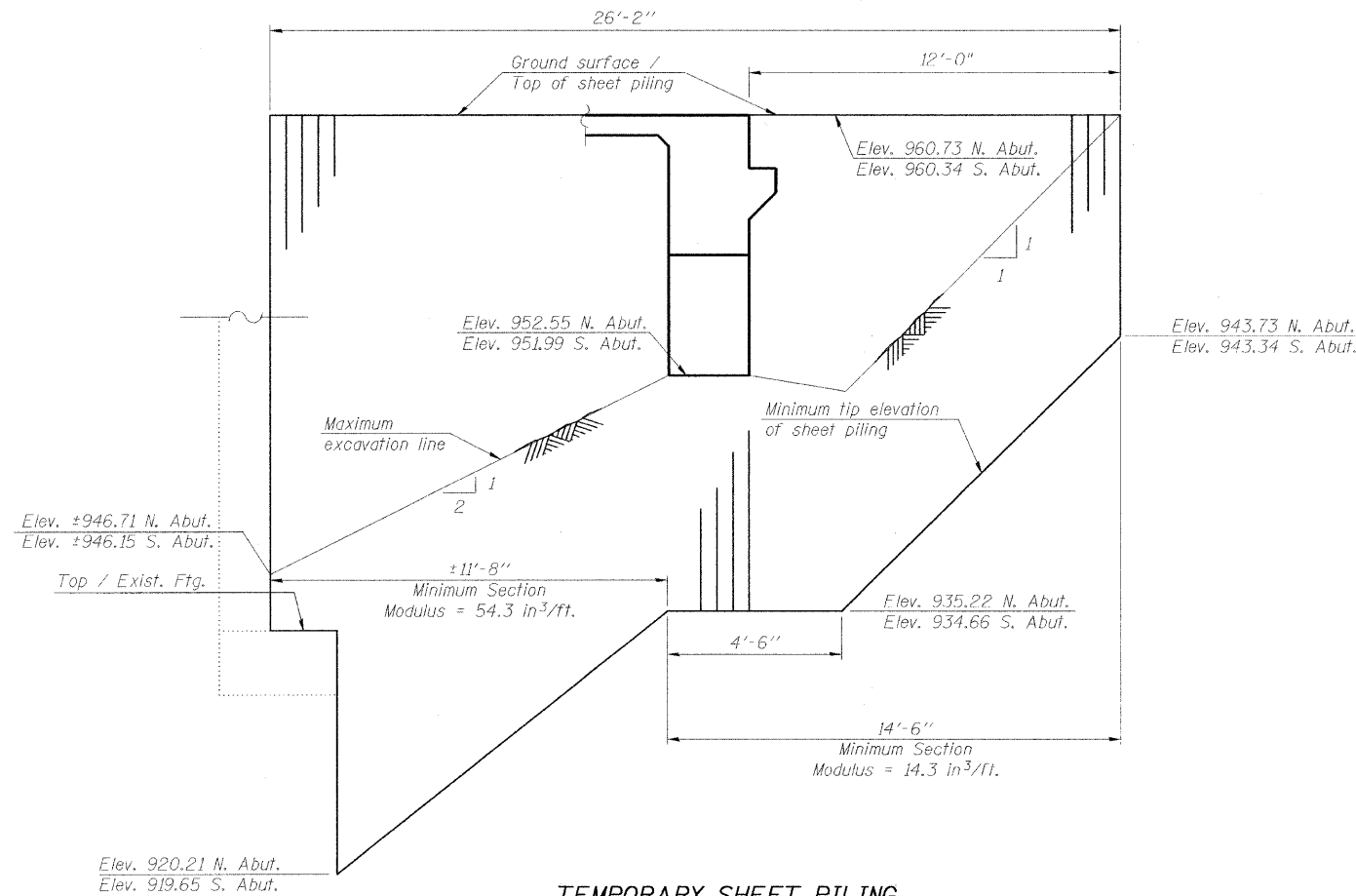


STATE OF ILLINOIS  
DEPARTMENT OF TRANSPORTATION



**TEMPORARY SHEET PILING**  
(North Abutment shown, South Abutment similar)

Notes:  
If the Contractor chooses to alter the temporary cantilevered sheet piling design requirements shown on the plans, a design submittal including plan details and calculations will be required for review and acceptance by the Engineer.  
The Contractor shall connect the first sheet to the existing abutment wall to ensure stability of sheets driven to the top of the existing footing. This connection shall be reviewed and accepted by the Engineer and included in the cost for Temporary Sheet Piling.

**INDEX OF SHEETS**

1. General Plan and Elevation
2. General Data
3. Foundation Layout Plan
4. Stage Construction Details
5. Steel Railing (Temporary)
6. Temporary Concrete Barrier
7. Top of Slab Elevations I
8. Top of Slab Elevations II
9. Top of Approach Slab Elevations
10. Deck Plan and Cross Section
11. Concrete Bridge Railing
12. Superstructure Details
13. Bridge Approach Slab Details
14. Bridge Approach Slab Details
15. 36" PPC I-Beam
16. 36" PPC I-Beam Details
17. South Abutment
18. North Abutment
19. Metal Shell Pile Details
20. Bar Splicer Assembly Details
21. Soil Boring Logs I
22. Soil Boring Logs II

**TOTAL BILL OF MATERIAL**

Item	Unit	Super	Sub.	Total
Channel Excavation	Cu. Yd.		321	321
Porous Granular Embankment, Special	Cu. Yd.		142	142
Stone Riprap, Class A4	Sq. Yd.		439	439
Filter Fabric	Sq. Yd.		616	616
Removal of Existing Structures	Each		1	1
Structure Excavation	Cu. Yd.		304	304
Concrete Structures	Cu. Yd.		64.3	64.3
Rubbed Finish	Sq. Ft.	1423		1423
Concrete Superstructure	Cu. Yd.	224.9		224.9
Bridge Deck Grooving	Sq. Yd.	507		507
Protective Coat	Sq. Yd.	629		629
Furnishing and Erecting Precast Prestressed Concrete I-Beams, 36 in.	Foot	398		398
Reinforcement Bars, Epoxy Coated	Pound	52,250	6280	58,530
Bar Splicers	Each	485	18	503
Steel Railing (Temporary)	Foot	30		30
Furnishing Metal Shell Piles 14"x0.250"	Foot		840	840
Driving Piles	Foot		840	840
Test Pile Metal Shells	Each		2	2
Pile Shoes	Each		14	14
Temporary Sheet Piling	Sq. Ft.		1436	1436
Name Plates	Each	1		1
Geocomposite Wall Drain	Sq. Yd.		78	78
Pipe Underdrains for Structures 4"	Foot		126	126
Concrete Bridge Railing	Foot	200		200
Temporary Slab Support System	L Sum	1		1

**GENERAL NOTES**

1. Reinforcement bars shall conform to the requirements of ASTM A 706 Gr 60 (IL Modified). See Special Provisions
2. Reinforcement bars designated (E) shall be epoxy coated.
3. Layout of slope protection system may be varied in the field to suit ground conditions as directed by the Engineer.
4. The Contractor shall drive test piles to 110% of the nominal required bearing specified in production locations at substructures specified or approved by the Engineer before ordering the remainder of piles.
5. The existing structure was investigated for presence of asbestos during the preliminary design phase and was found to NOT contain asbestos. Documentation confirming this finding was provided to the Illinois Department of Transportation at that time to clear this project for approval.
6. Demolition of the bridge within and near the creek shall be in accordance with the US Army Corps of Engineer's Regional Permit and McHenry County SWCD erosion control requirements. See the Erosion Control Plans for additional information. A copy of the Regional Permit is included in the Special Provisions.
7. The Contractor is advised that the existing structure is in a deteriorated condition with reduced load carrying capacity. It is the Contractor's responsibility to account for the condition of the structure when developing construction procedures for removal and replacement of the structure.
8. Plan dimensions and details relative to existing structure are subject to nominal construction variations. The Contractor shall field verify existing dimensions and details affecting new construction and make necessary approved adjustments prior to construction or ordering of materials. Such variations shall not be cause for additional compensation for a change in scope of the work, however, the Contractor will be paid for the quantity actually furnished at the unit price bid for the work.

**GENERAL DATA**  
**STRUCTURE NO. 056-3174**

DESIGNED	MDS
CHECKED	LAN
DRAWN	MDS
CHECKED	SLC



1051 Perimeter Drive, Suite 1025  
Schaumburg, IL 60173-5058  
Phone: (847) 605-9600  
Fax: (847) 605-9610

SHEET NO. 2	F.A.S. RTE.	SECTION	COUNTY	TOTAL SHEETS	SHEET NO.
	0026	02-00269-00-BR	McHENRY	153	94
22 SHEETS	CONTRACT NO. 63212				
FED. ROAD DIST. NO.		ILLINOIS FED. AID PROJECT			