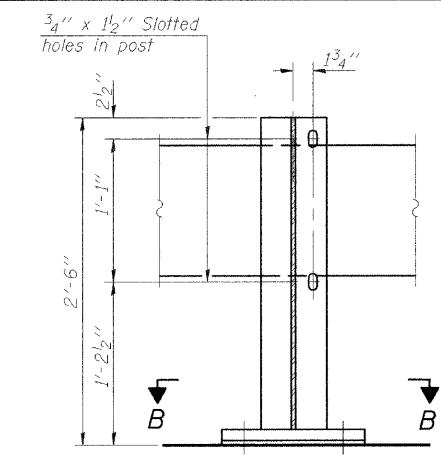
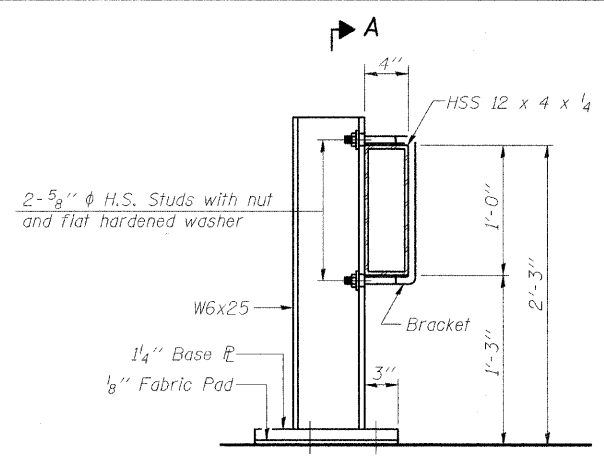


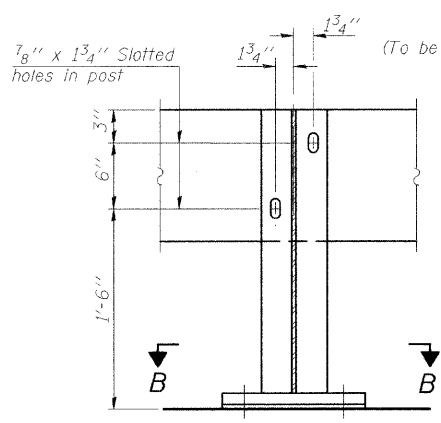
STATE OF ILLINOIS
DEPARTMENT OF TRANSPORTATION



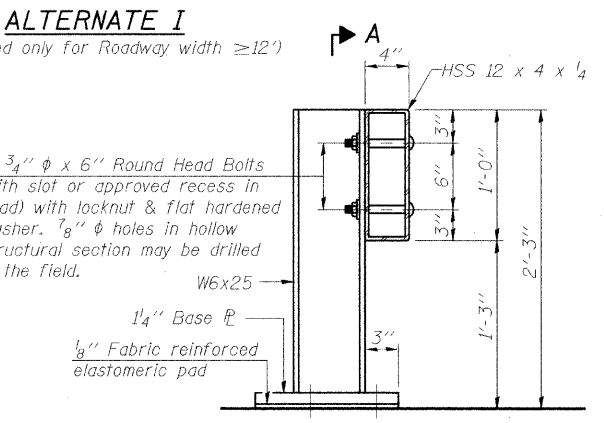
SECTION A-A



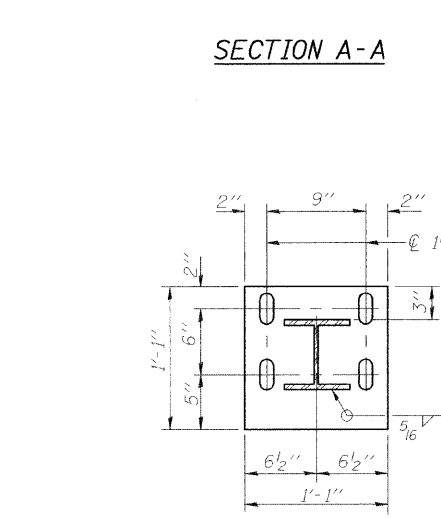
SECTION AT RAIL POST



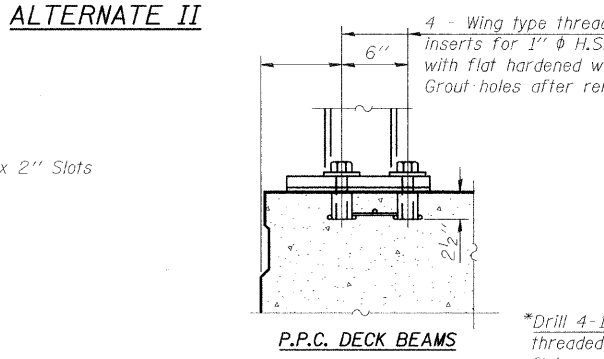
SECTION A-A



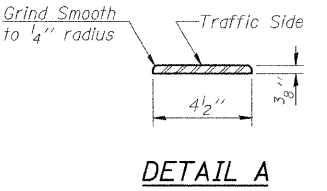
SECTION AT RAIL POST



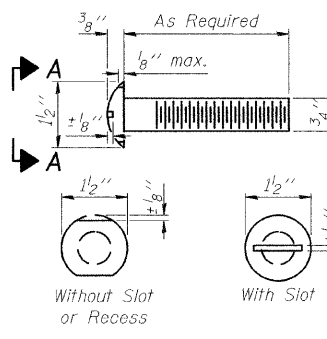
SECTION B-B



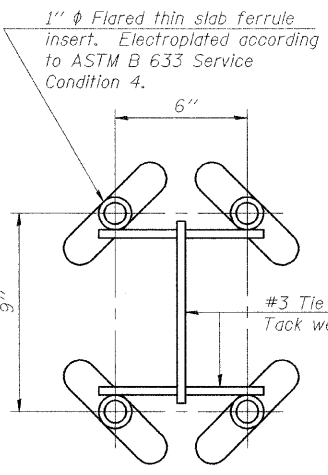
P.P.C. DECK BEAMS



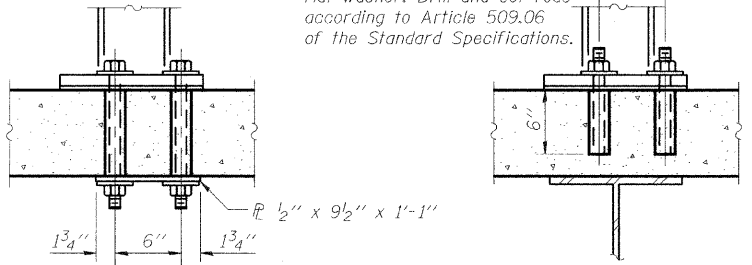
DETAIL A



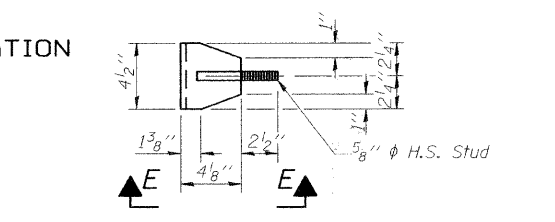
VIEW A-A
ROUND HEAD BOLT



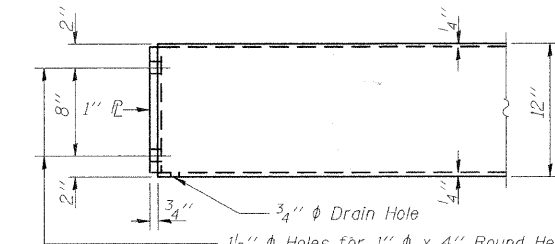
INSERT DETAIL



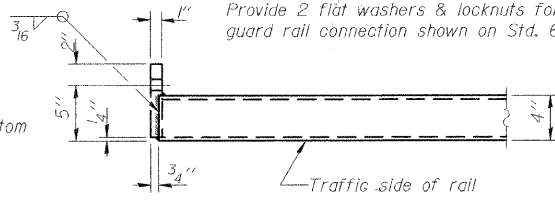
NEW & EXISTING DECKS
ANCHORAGE DETAILS



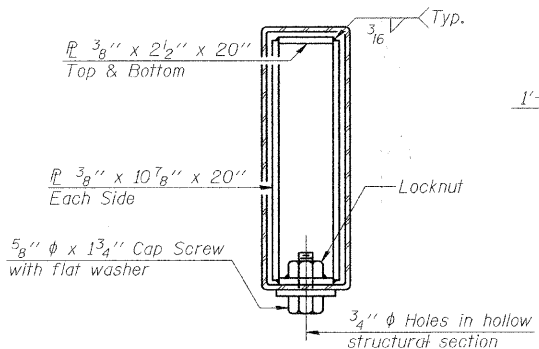
VIEW C-C



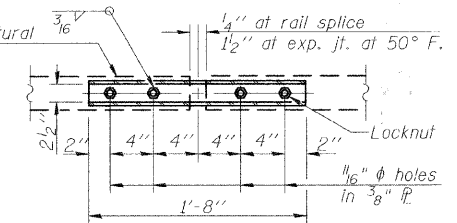
END OF RAIL DETAILS



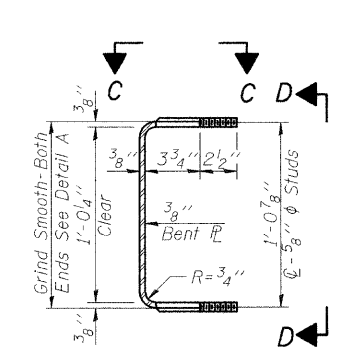
RAIL SPLICE CONNECTION
AT EXPANSION JT.



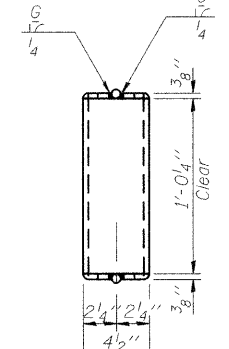
SECTION AT RAIL SPLICE



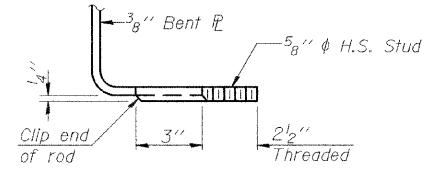
PLAN-BOTT. SPLICE TYPICAL



SECTION THRU BRACKET

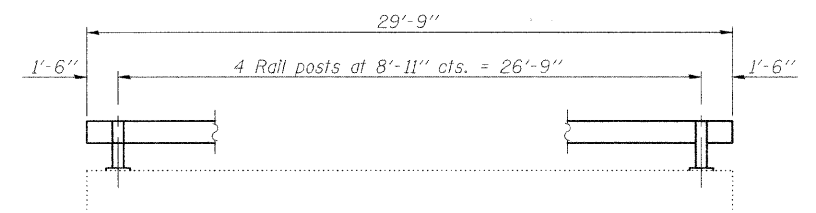


VIEW D-D



VIEW E-E

Notes:
The contact surfaces between post flange, rail and inside face of bracket for Alternate I shall be free of all lubricants.
The nut for 5/8 inch high strength studs used in Alternate I to connect bracket to post shall be tightened to a snug fit and given an additional one half turn.



TEMPORARY BRIDGE RAIL POST SPACING

BILL OF MATERIAL

Item	Unit	Quantity
Steel Railing (Temporary)	Foot	30

STEEL RAILING (TEMPORARY)
STRUCTURE NO. 056-3174

SHEET NO.	F.A.S. RTE.	SECTION	COUNTY	TOTAL SHEETS	SHEET NO.
5	0026	02-00269-00-BR	McHENRY	153	97
22 SHEETS					CONTRACT NO. 63212
	FED. ROAD DIST. NO.	ILLINOIS FED. AID PROJECT			

DESIGNED	LAN
CHECKED	SLC
DRAWN	LAN
CHECKED	SLC

R-25 10-1-08 (10'-9" Maximum Post Spacing)