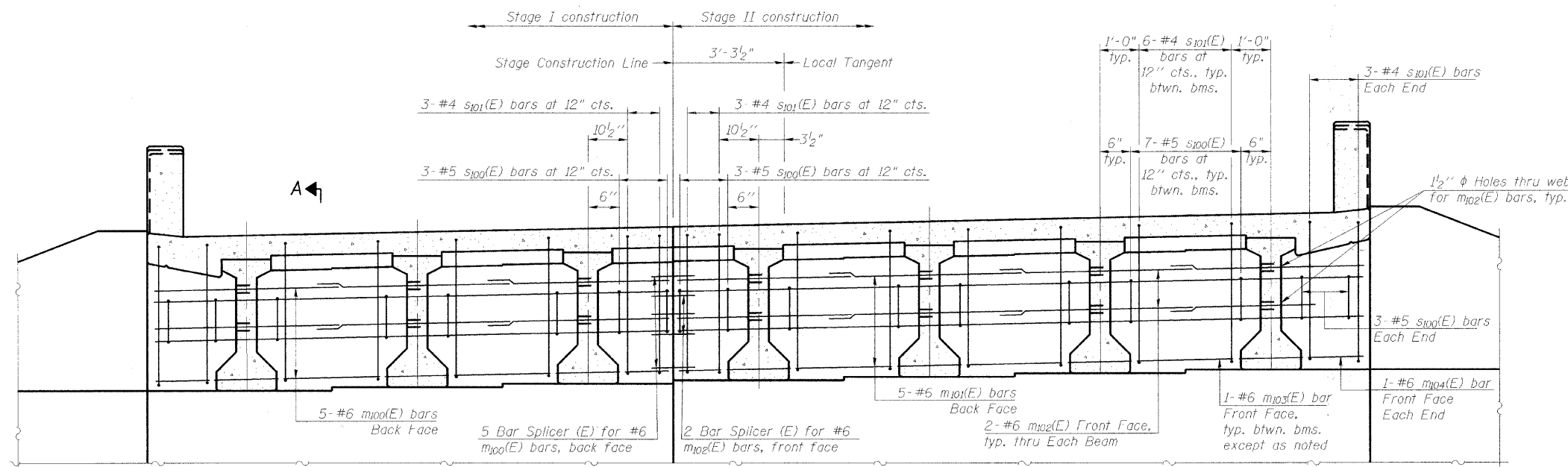


STATE OF ILLINOIS
DEPARTMENT OF TRANSPORTATION

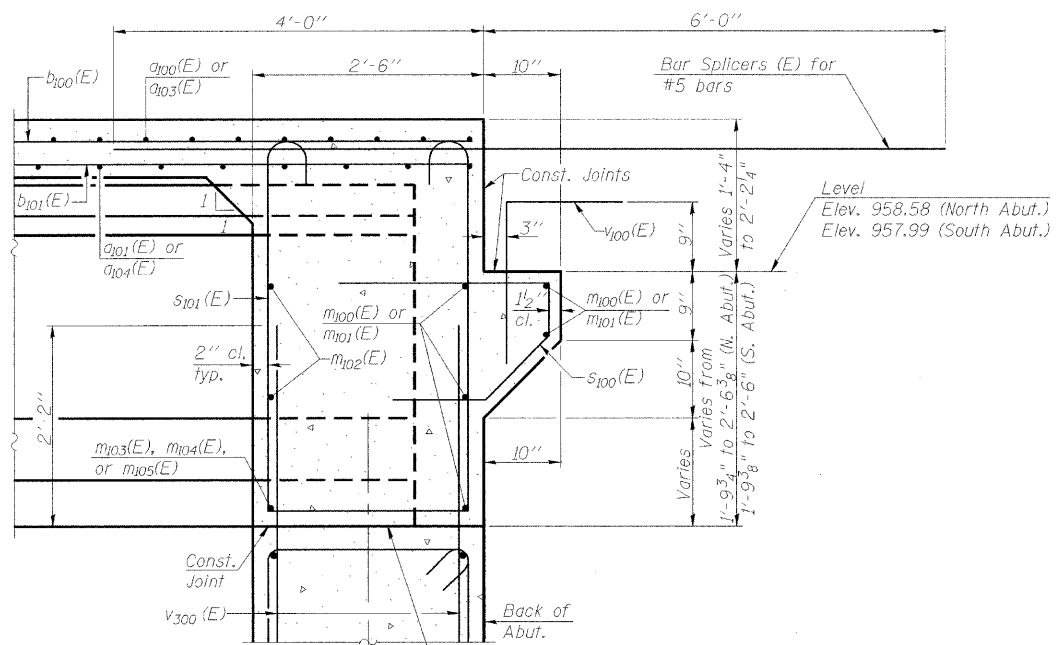
**SUPERSTRUCTURE
BILL OF MATERIAL**



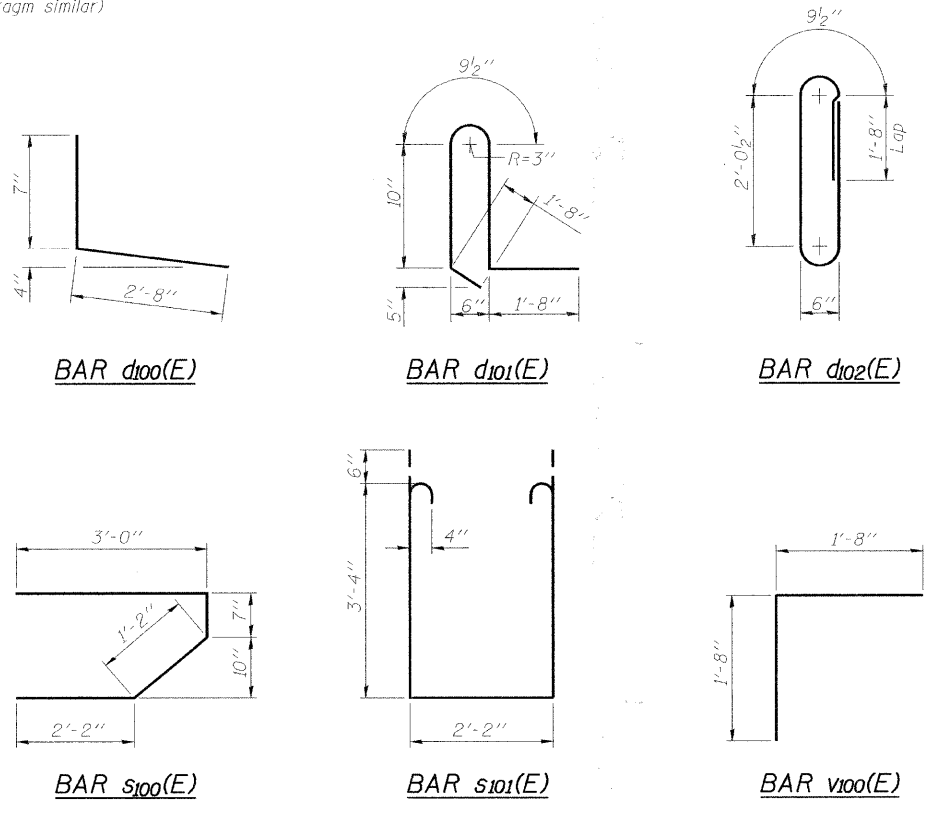
DIAPHRAGM ELEVATION AT ABUTMENT
(North diaphragm shown, looking North. South diaphragm similar)

Bar	No.	Size	Length	Shape
a100 (E)	79	#5	18'-2"	—
a101 (E)	70	#5	17'-8"	—
a102 (E)	80	#6	6'-6"	—
a103 (E)	79	#5	24'-2"	—
a104 (E)	70	#5	23'-8"	—
b100 (E)	92	#5	30'-0"	—
b101 (E)	117	#5	20'-9"	—
d100 (E)	234	#5	3'-3"	⌒
d101 (E)	234	#5	5'-10"	⌒
d102 (E)	312	#5	7'-4"	⌒
e100 (E)	12	#7	19'-0"	—
e101 (E)	12	#5	19'-0"	—
e102 (E)	8	#7	20'-6"	—
e103 (E)	8	#5	20'-6"	—
m100 (E)	10	#6	18'-2"	—
m101 (E)	10	#6	24'-2"	—
m102 (E)	28	#6	8'-9"	—
m103 (E)	10	#6	4'-2"	—
m104 (E)	4	#6	2'-4"	—
s100 (E)	94	#5	6'-11"	⌒
s101 (E)	84	#4	9'-10"	⌒
v100 (E)	92	#5	3'-4"	⌒
Reinforcement Bars, Epoxy Coated			Pound	17,550
Concrete Superstructure			Cu. Yds.	93.8
Concrete Bridge Railing			Foot	116
Bar Splicers			Each	255
Bridge Deck Grooving			Sq. Yd.	249
Protective Coat			Sq. Yd.	316
Rubbed Finish			Sq. Ft.	1423

Concrete in diaphragm is included with Concrete Superstructure.
***Bars e100(E), e101(E), e102(E), e103(E), and d102(E) are included in the cost of Concrete Bridge Railing. These bars are excluded from the quantity Reinforcement Bars, Epoxy Coated.



SECTION A-A
Dimensions at right angles to abutment, except as shown.



MIN. BAR LAP
#6 bar = 2'-9"



**SUPERSTRUCTURE DETAILS
STRUCTURE NO. 056-3174**

DESIGNED	LAN
CHECKED	MDS
DRAWN	LAN
CHECKED	MDS

SHEET NO. 12	F.A.S. RTE.	SECTION	COUNTY	TOTAL SHEETS	SHEET NO.
	0026	02-00269-00-BR	McHENRY	153	104
22 SHEETS	CONTRACT NO. 63212				
FED. ROAD DIST. NO.		ILLINOIS FED. AID PROJECT			

lan@illinois.gov 5/28/2023 6:56:02 PM - g:\c\04\0083\STRUCTURE\sheet\3174.rvt