

F.A.S. RTE.	SECTION	COUNTY	TOTAL SHEETS	SHEET NO.
0031	06-00323-00-BR	MCHENRY	53	1
FED. ROAD DIST. NO. 1		ILLINOIS	CONTRACT NO. 63218	

MCHENRY COUNTY DIVISION OF TRANSPORTATION: WALTER DITTRICH (815) 334-4980

INDEX OF SHEETS

FOR INDEX OF SHEETS, SEE SHEET NO. 2

THE PROJECT IS LOCATED
IN UNINCORPORATED
MCHENRY COUNTY

STATE OF ILLINOIS
DEPARTMENT OF TRANSPORTATION
DIVISION OF HIGHWAYS
F.A.S. ROUTE 0031
KISHWAUKEE VALLEY ROAD (A-33)
OVER NORTH BRANCH
OF KISHWAUKEE RIVER

D-91-359-06



LOCATION OF SECTION INDICATED THUS: - [black rectangle] -

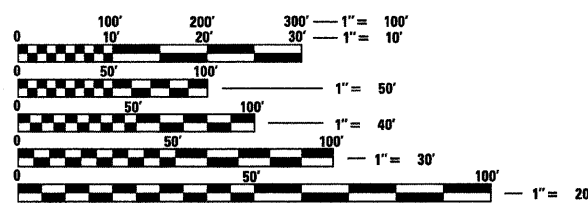
SIGNATURE *Nathan Holman*
DATE 05/21/09
EXPIRES 11/30/09
SHEET RANGE 1-19, 43-53

SIGNATURE *Amish T. Bhatt*
DATE 05/29/09
EXPIRES 11/30/2010
SHEET RANGE 20 thru 42

SECTION 06-00323-00-BR
PROJECT BHS-31 (108)
BRIDGE REPLACEMENT
SENECA TOWNSHIP
MCHENRY COUNTY
C-91-359-06

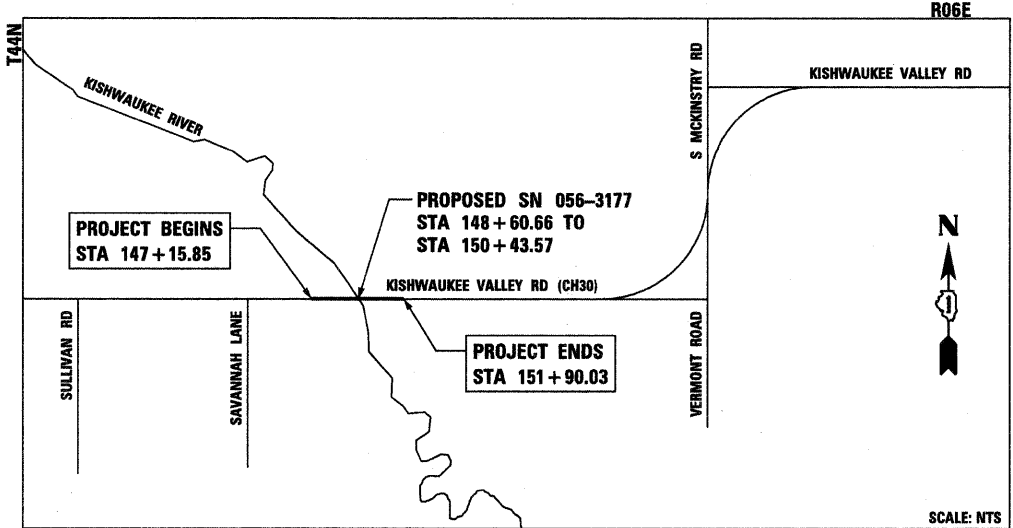
TRAFFIC DATA

DESIGN SPEED = 60 MPH
POSTED SPEED = 55 MPH
FUNCTIONAL CLASSIFICATION = RURAL MAJOR COLLECTOR
EXISTING ADT = 4730 (2007)
DESIGN ADT = 6000 (2030)



FULL SIZE PLANS HAVE BEEN PREPARED USING STANDARD ENGINEERING SCALES. REDUCED SIZED PLANS WILL NOT CONFORM TO STANDARD SCALES. IN MAKING MEASUREMENTS ON REDUCED PLANS, THE ABOVE SCALES MAY BE USED.

J.U.L.I.E.
JOINT UTILITY LOCATION INFORMATION FOR EXCAVATION
1-800-892-0123
OR 811



THE PROJECT CONSISTS OF THE REPLACEMENT OF SN: 056-3014 WITH SN: 056-3177 OVER NORTH BRANCH OF KISHWAUKEE RIVER



STATE OF ILLINOIS
DEPARTMENT OF TRANSPORTATION
DIVISION OF HIGHWAYS

APPROVED MAY 26 20 09
Joseph R. Kopalaki, Jr.
COUNTY ENGINEER

PASSED July 21 20 09
Christopher Holt
DISTRICT 1 ENGINEER OF LOCAL ROADS & STREETS

RELEASING FOR BID
BASED ON LIMITED
REVIEW JULY 21 20 09
Diana M. O'Keefe
DEPUTY DIRECTOR OF HIGHWAYS, REGION 1 ENGINEER

PROJECT ENGINEER: NATHAN HOLMAN
PROJECT MANAGER: MATT REMPFER

GROSS LENGTH OF PROJECT = 474.18 FT (0.090 MILES)
NET LENGTH OF PROJECT = 474.18 FT (0.090 MILES)

CONTRACT NO. 63218

PRINTED BY THE AUTHORITY
OF THE STATE OF ILLINOIS

FEDERAL AID DESIGN ENGINEER: KEVIN STALLWORTH (847) 705-4169