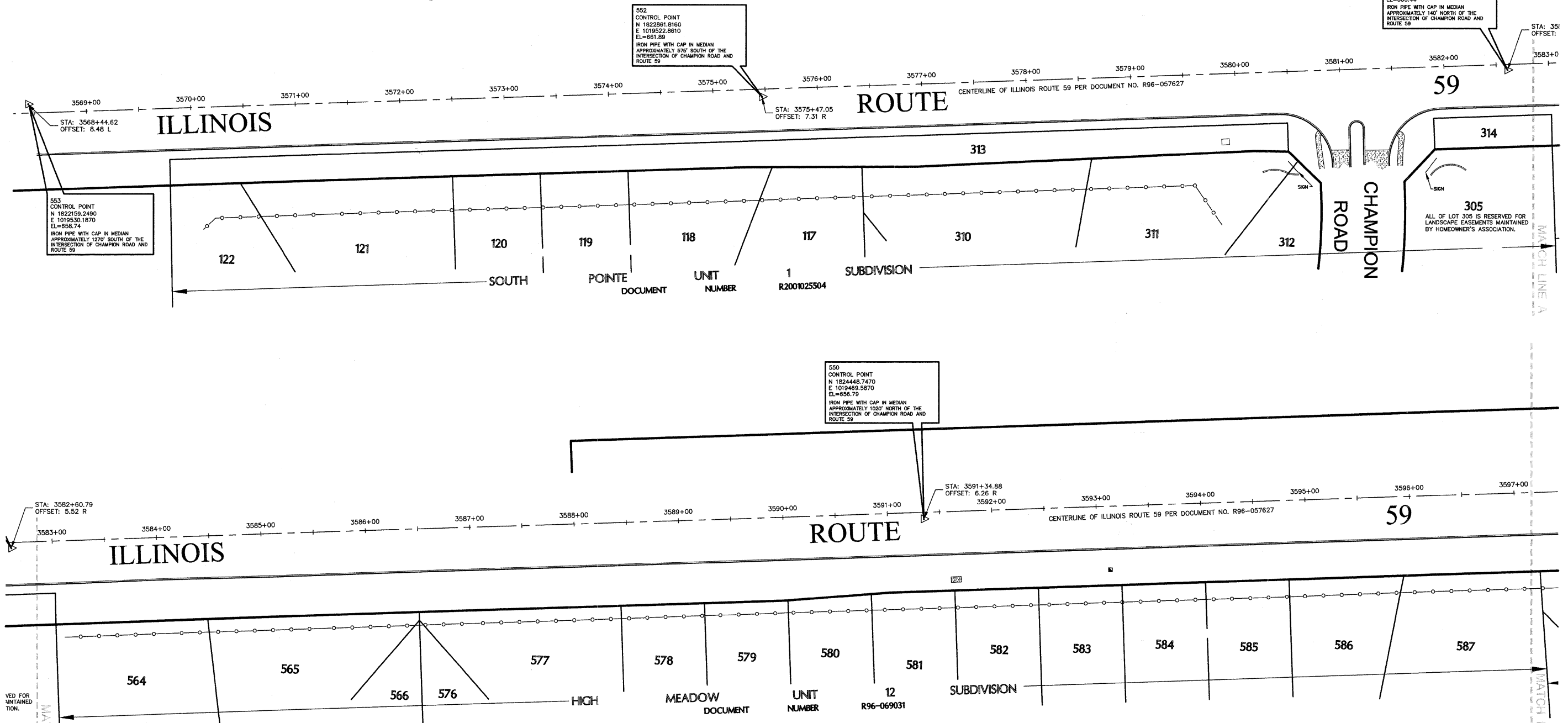
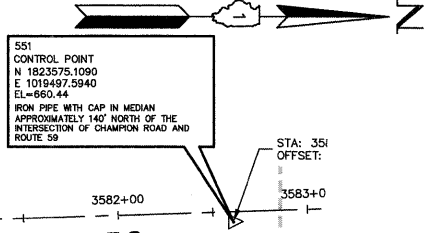


ALIGNMENT AND CONTROL EXHIBIT OF ILLINOIS ROUTE 59



552
CONTROL POINT
N 1822861.8160
E 1019522.8810
EL=661.89
IRON PIPE WITH CAP IN MEDIAN
APPROXIMATELY 575' SOUTH OF THE
INTERSECTION OF CHAMPION ROAD AND
ROUTE 59

553
CONTROL POINT
N 1822159.2490
E 1019530.1670
EL=658.74
IRON PIPE WITH CAP IN MEDIAN
APPROXIMATELY 1270' SOUTH OF THE
INTERSECTION OF CHAMPION ROAD AND
ROUTE 59

550
CONTROL POINT
N 1824448.7470
E 1019489.5870
EL=656.79
IRON PIPE WITH CAP IN MEDIAN
APPROXIMATELY 1020' NORTH OF THE
INTERSECTION OF CHAMPION ROAD AND
ROUTE 59

REFERENCE BENCHMARK: (NAVD88 DATUM)
CITY OF NAPERVILLE CONTROL MONUMENT, STATION NO. 236
BERNSTEIN 3D TOP SECURITY MONUMENT LOCATED NORTH OF WOLF CROSSING
ROAD AND WEST OF RAIL ROAD TRACKS.
ELEVATION = 704.46'

SITE BENCHMARK 1
CHISELED SQUARE ON TRAFFIC SIGNAL BASE LOCATED AT THE SOUTHEAST
CORNER OF IL RT. 59 AND 87TH STREET.
ELEVATION = 700.03'

SITE BENCHMARK 2
CHISELED SQUARE ON TOP OF FLARED END SECTION LOCATED ON THE EAST
SIDE OF IL RT. 59 AT STATION 3766+52.
ELEVATION = 702.14'

SITE BENCHMARK 3
CHISELED SQUARE ON TOP OF CURB LOCATED ON THE WEST SIDE OF THE
MEDIAN IN THE CENTER OF IL RT. 59 NORTH OF 91ST STREET AT STATION
3745+21.
ELEVATION = 698.90'

SITE BENCHMARK 4
CHISELED SQUARE ON SOUTHERNMOST TRAFFIC SIGNAL BASE LOCATED AT THE
SOUTHWEST CORNER OF IL RT. 59 AND 95TH STREET.
ELEVATION = 699.54'

SITE BENCHMARK 5
CHISELED SQUARE ON NORTHERNMOST TRAFFIC SIGNAL BASE LOCATED AT THE
NORTHWEST CORNER OF IL RT. 59 AND ROYAL WORLINGTON DRIVE.
ELEVATION = 668.59'

SITE BENCHMARK 6
CHISELED SQUARE ON TOP OF CURB LOCATED ON THE WEST SIDE OF IL RT. 59
NEAR STATION 3625+00.
ELEVATION = 654.61'

SITE BENCHMARK 7
CHISELED SQUARE ON WESTERNMOST TRAFFIC SIGNAL BASE LOCATED AT THE
NORTHWEST CORNER OF IL RT. 59 AND 111TH STREET.
ELEVATION = 657.62'

SITE BENCHMARK 8
CHISELED SQUARE ON TOP OF CURB AT TIP OF MEDIAN LOCATED IN THE
CENTERLINE OF IL RT. 59 SOUTH OF CENTERLINE OF CHAMPION DRIVE.
ELEVATION = 661.40'

SITE BENCHMARK 9
CHISELED SQUARE ON NORTHERNMOST TRAFFIC SIGNAL BASE LOCATED AT THE
NORTHWEST CORNER OF IL RT. 59 AND 119TH STREET.
ELEVATION = 653.46'

COMPASS SURVEYING LTD

2631 GINGER WOODS PARKWAY, STE. 100
AURORA, IL 60502
PHONE: (630) 820-9100 FAX: (630) 820-7030

CIVILTECH

450 E. Devon Ave, Suite 300 - Itasca, Illinois 60143
Tel: 630.773.3900 - Fax: 630.773.3975
www.civiltechinc.com

DESIGNED	REVISED	---
DRAWN	REVISED	---
CHECKED	REVISED	---
DATE	8/13/2009	REVISED

CITY OF NAPERVILLE

ALIGNMENT AND TIES PLAN
ILLINOIS ROUTE 59 SIDEWALK CONSTRUCTION

SCALE: 1"=50'

F.A.P. RTE.	SECTION	COUNTY	TOTAL SHEETS	SHEET NO.
338	07-00136-00-SW	WILL & DUPAGE	88	5
FED. ROAD DIST. NO. 1 ILLINOIS			CONTRACT NO. 63224	