

ALIGNMENT AND CONTROL EXHIBIT

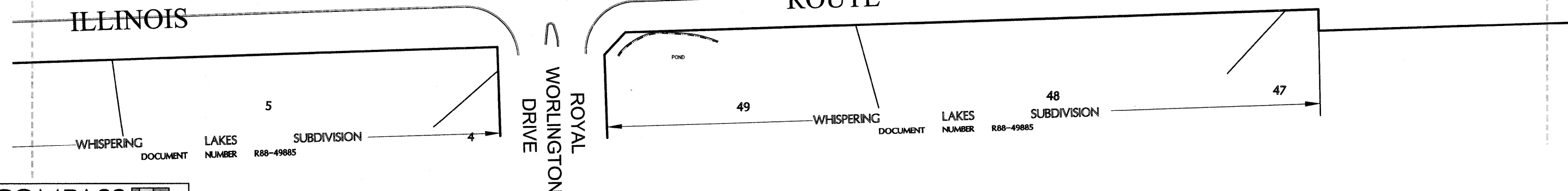
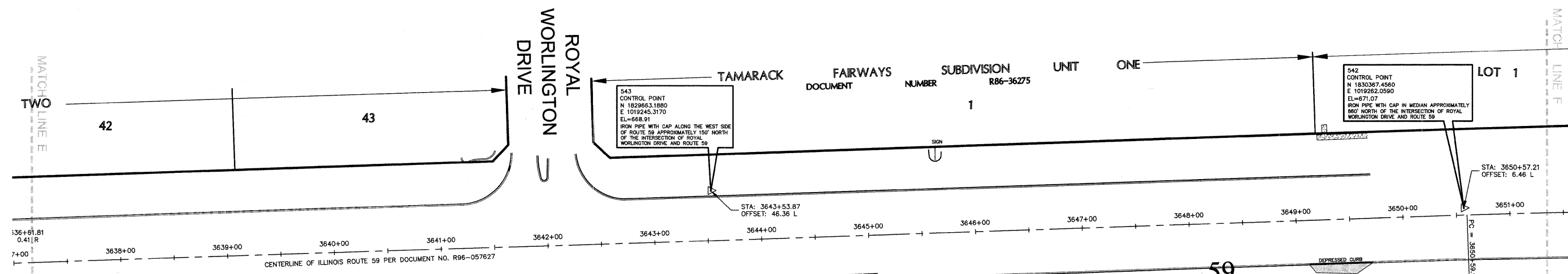
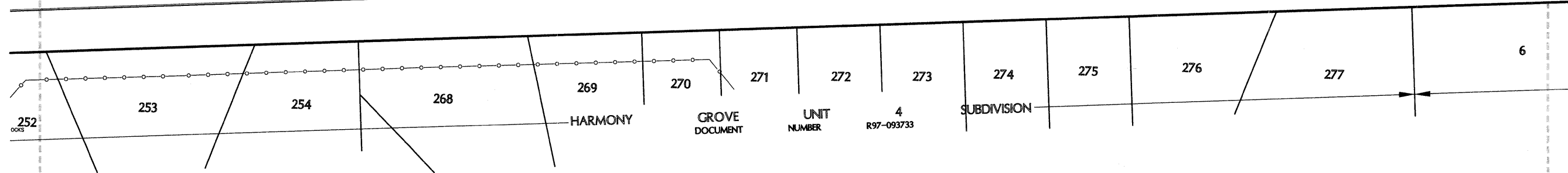
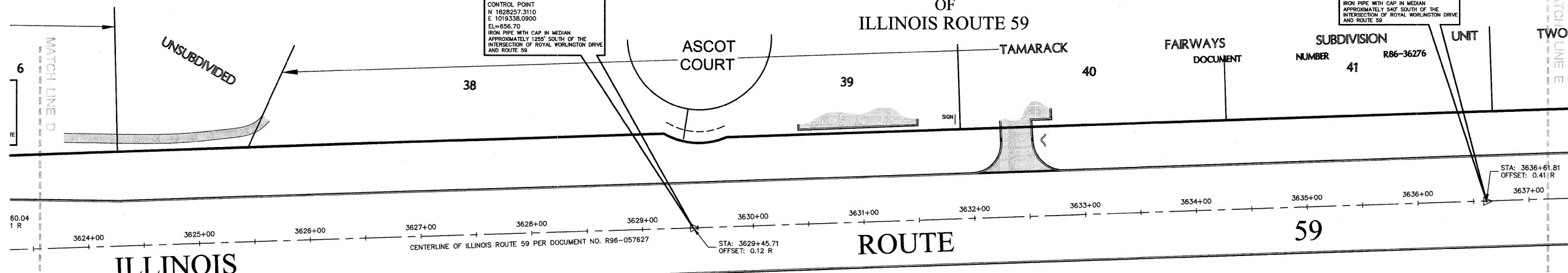
OF ILLINOIS ROUTE 59

544
CONTROL POINT
N 1828973.0360
E 1019314.8270
EL=658.35
IRON PIPE WITH CAP IN MEDIAN
APPROXIMATELY 540' SOUTH OF THE
INTERSECTION OF ROYAL WORLINGTON DRIVE
AND ROUTE 59

545
CONTROL POINT
N 1828257.3110
E 1019338.0900
EL=656.70
IRON PIPE WITH CAP IN MEDIAN
APPROXIMATELY 1250' SOUTH OF THE
INTERSECTION OF ROYAL WORLINGTON DRIVE
AND ROUTE 59

543
CONTROL POINT
N 1829663.1680
E 1019245.3170
EL=668.91
IRON PIPE WITH CAP ALONG THE WEST SIDE
OF ROUTE 59 APPROXIMATELY 150' NORTH
OF THE INTERSECTION OF ROYAL
WORLINGTON DRIVE AND ROUTE 59

542
CONTROL POINT
N 1830367.4560
E 1019282.0590
EL=671.07
IRON PIPE WITH CAP IN MEDIAN APPROXIMATELY
860' NORTH OF THE INTERSECTION OF ROYAL
WORLINGTON DRIVE AND ROUTE 59



COMPASS SURVEYING LTD
2631 GINGER WOODS PARKWAY, STE. 100
AURORA, IL 60502
PHONE: (630) 820-9100 FAX: (630) 820-7030

CIVILTECH
450 E. Devon Ave, Suite 300 - Itasca, Illinois 60143
Tel: 630.773.3900 - Fax: 630.773.3975
www.civiltechinc.com

DESIGNED	REVISED	-
DRAWN	REVISED	-
CHECKED	REVISED	-
DATE	8/13/2009	REVISED

CITY OF NAPERVILLE

ALIGNMENT AND TIES PLAN
ILLINOIS ROUTE 59 SIDEWALK CONSTRUCTION
SCALE: 1"=50'

F.A.P. RTE.	SECTION	COUNTY	TOTAL SHEETS	SHEET NO.
338	07-00136-00-SW	WILL & DUPAGE	88	5B
FED. ROAD DIST. NO. 1 ILLINOIS			CONTRACT NO. 63224	

