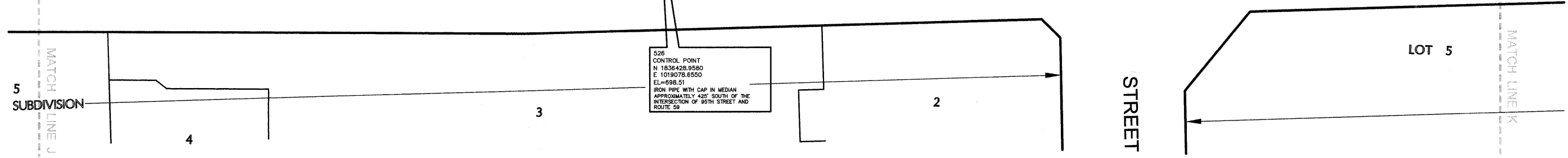
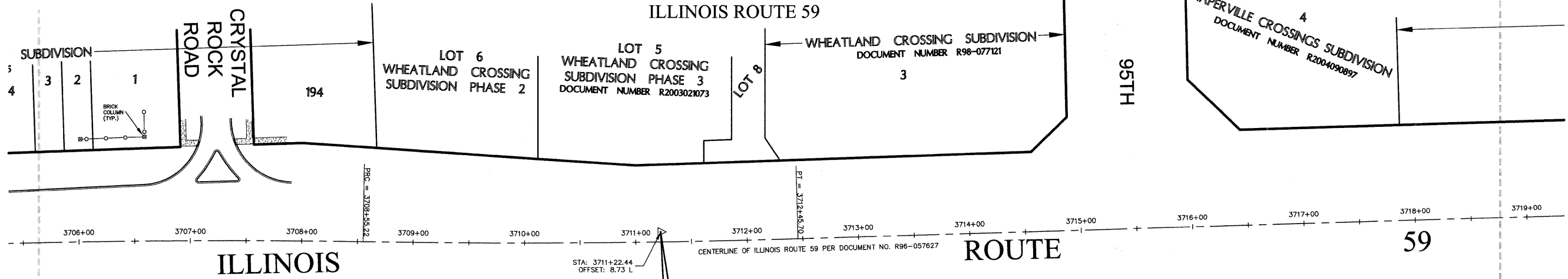
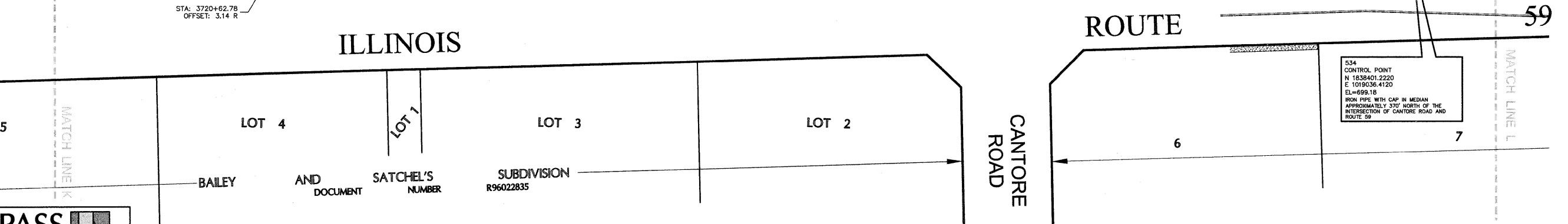
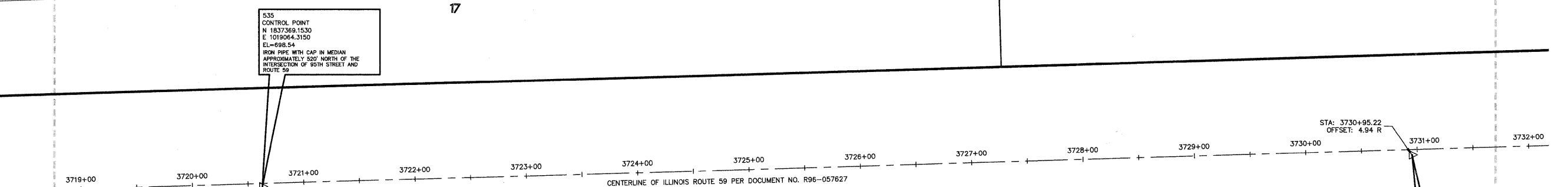


ALIGNMENT AND CONTROL EXHIBIT

OF
ILLINOIS ROUTE 59



PLAT OF RESUBDIVISION & 2ND AMENDED PRELIMINARY PLANNED UNIT DEVELOPMENT FOR LOTS 2, 3, 5 AND 6 OF NAPERVILLE CROSSINGS—
DOCUMENT NUMBER R2006063519



COMPASS
SURVEYING LTD

2631 GINGER WOODS PARKWAY, STE. 100
AURORA, IL 60502
PHONE: (630) 820-9100 FAX: (630) 820-7030

CIVILTECH

450 E. Devon Ave, Suite 300 - Itasca, Illinois 60143
Tel: 630.773.3900 - Fax: 630.773.3975
www.civiltechinc.com

DESIGNED	REVISED --
DRAWN	REVISED --
CHECKED	REVISED --
DATE 8/13/2009	REVISED --



CITY OF NAPERVILLE

SCALE: 1"=50'

ALIGNMENT AND TIES PLAN
ILLINOIS ROUTE 59 SIDEWALK CONSTRUCTION

F.A.P. RTE.	SECTION	COUNTY	TOTAL SHEETS	SHEET NO.
338	07-00136-00-SW	WILL & DUPAGE	88	5E
FED. ROAD DIST. NO. 1 ILLINOIS			CONTRACT NO. 63224	