

FOR INDEX OF SHEETS, SEE SHEET NO. 2

FOR INDEX OF HIGHWAY STANDARDS, SEE SHEET NO. 2

PROJECT LOCATED IN THE VILLAGE OF PLAINFIELD

STATE OF ILLINOIS  
 DEPARTMENT OF TRANSPORTATION  
 DIVISION OF HIGHWAYS

# PLANS FOR PROPOSED FEDERAL AID HIGHWAY

## FAP ROUTE 0349 WALLIN DRIVE

### WALLIN DRIVE FROM 143RD STREET TO IL ROUTE 126 RESURFACING

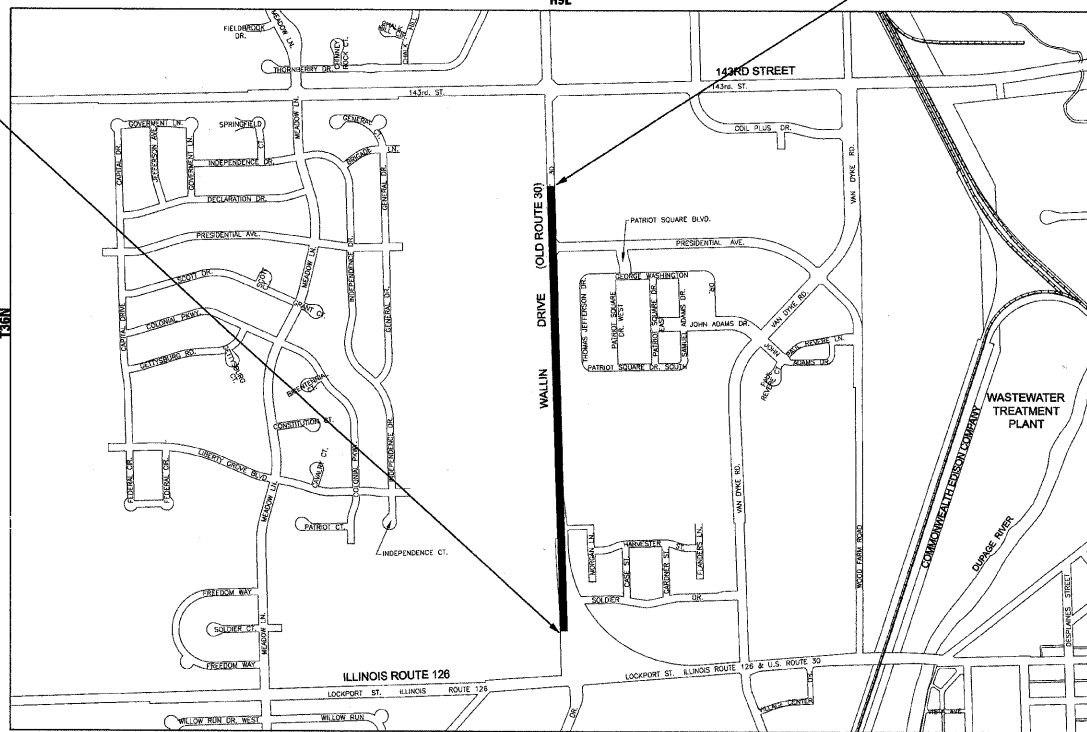
PROJECT No.: ARA-9003-(396)  
 SECTION No.: 09-00046-00-RS  
 JOB No: C91-725-09  
 VILLAGE OF PLAINFIELD  
 WILL COUNTY

**TRAFFIC DATA**  
 WALLIN DRIVE  
 POSTED & DESIGN SPEED LIMIT = 55 MPH  
 2009 ADT = 13,400

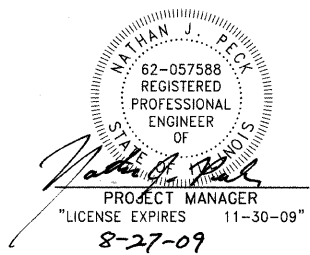
PROJECT NO.: ARA-9003(396)  
 FAP 0349 WALLIN DRIVE  
 PROJECT BEGINS STA 13+18

PROJECT NO.: ARA-9003(396)  
 FAP 0349 WALLIN DRIVE  
 PROJECT ENDS STA 56+09

LOCATION MAP  
 (NOT TO SCALE)  
 RSE

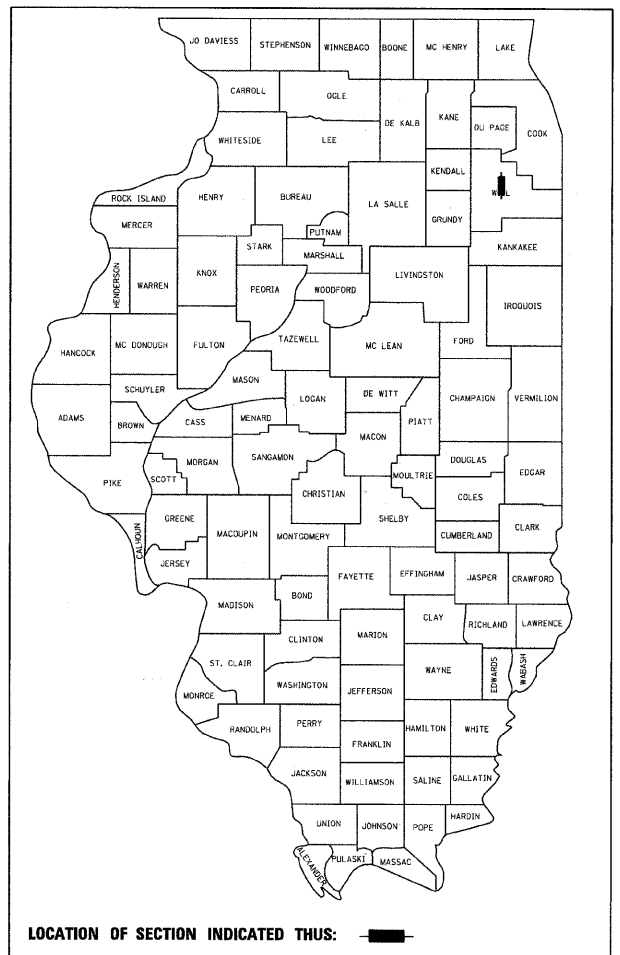


PLAINFIELD TOWNSHIP  
 GROSS LENGTH OF IMPROVEMENT = 4,291 LF OR 0.81 MILES  
 NET LENGTH OF IMPROVEMENT = 4,291 LF OR 0.81 MILES



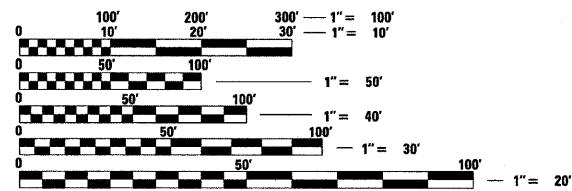
F.A.U. RTE.	SECTION	COUNTY	TOTAL SHEETS	SHEET NO.
09-00046-00-RS	WILL	12	1	
STA.	TO STA.			
FED. ROAD DIST. NO.	ILLINOIS	FED AID PROJECT		

FAP 0349 WALLIN DRIVE  
 CONTRACT NO. 63226



LOCATION OF SECTION INDICATED THUS: [Symbol]

BAXTER & WOODMAN, INC.  
 STATE OF ILLINOIS - PROFESSIONAL DESIGN FIRM  
 LICENSE NO. - 184-001121 - EXPIRES 4/30/2011



FULL SIZE PLANS HAVE BEEN PREPARED USING STANDARD ENGINEERING SCALES. REDUCED SIZED PLANS WILL NOT CONFORM TO STANDARD SCALES. IN MAKING MEASUREMENTS ON REDUCED PLANS, THE ABOVE SCALES MAY BE USED.

J.U.L.I.E.  
 JOINT UTILITY LOCATION INFORMATION FOR EXCAVATION  
 1-800-892-0123

STATE OF ILLINOIS  
 DEPARTMENT OF TRANSPORTATION  
 DIVISION OF HIGHWAYS

APPROVED: *Kenneth W. Jan*  
 Supt. of Public Components  
 LOCAL AGENCY REPRESENTATIVE

PASSED: *August 31, 2009*  
*Chet Christopherson*  
 LOCAL ROADS ENGINEER

RELEASING FOR BID  
 BASED ON LIMITED REVIEW: *SEPTEMBER 1, 2009*  
*Diane M. O'Keefe*  
 DEPUTY DIRECTOR OF  
 HIGHWAYS, REGION 1 ENGINEER

PRINTED BY THE AUTHORITY  
 OF THE STATE OF ILLINOIS

CONTRACT NO. 63226

Burlington, Wisconsin 262.763.7834  
 Crystal Lake, Illinois 815.459.1260  
 DeKalb, Illinois 815.787.3111  
 Itasca, Illinois (Mokena, Illinois) 630.773.1870 708.478.2090  
 Grayslake, Illinois 847.223.5088  
 Plainfield, Illinois 815.609.7425  
 Madison, Wisconsin 608.347.1542  
 Chicago, Illinois 312.578.0050

(OFFICE WHICH PREPARED PLANS)

B&W PROJECT NO.: 090439.40 DATE: 06-29-09

COPYRIGHT © 2009 BY BAXTER & WOODMAN, INC.  
 LICENSE NO. - 184-001121 - EXPIRES 4/30/2011  
 PLOTTED BY: MELCHOR MANGOBA, P.E. (847-705-4408)  
 FIELD ENGINEER

**GENERAL NOTES**

- ALL CONSTRUCTION SHALL BE DONE IN ACCORDANCE WITH THE DETAILS IN THE PLANS, THE SPECIAL PROVISIONS INCLUDED IN THE CONTRACT DOCUMENTS, AND THE LATEST EDITION OF THE FOLLOWING STATE OF ILLINOIS SPECIFICATIONS: "THE STANDARD SPECIFICATIONS FOR ROAD AND BRIDGE CONSTRUCTION" (REFERRED TO AS THE "STANDARD SPECIFICATIONS"), THE "SUPPLEMENTAL SPECIFICATIONS AND RECURRING SPECIAL PROVISIONS", THE "MANUAL ON UNIFORM TRAFFIC CONTROL DEVICES FOR STREETS AND HIGHWAYS" AND THE "MANUAL OF TEST PROCEDURES FOR MATERIALS".
- THE CONTRACTOR SHALL HAVE THE RESPECTIVE UTILITY COMPANIES FIELD LOCATE ALL THEIR FACILITIES PRIOR TO BEGINNING CONSTRUCTION. THE CONTRACTOR SHALL ALSO VERIFY THE DEPTHS OF THE EXISTING UTILITIES IF NECESSARY. ALL RELOCATION OR LOWERING OF UTILITIES SHALL BE COORDINATED BY THE CONTRACTOR.
- THE CONTRACTOR SHALL BE RESPONSIBLE FOR THE PROTECTION OF ALL UNDERGROUND OR SURFACE UTILITIES EVEN THOUGH THEY MAY NOT BE SHOWN ON THE PLANS. ANY UTILITY THAT IS DAMAGED DURING CONSTRUCTION SHALL BE REPAIRED OR REPLACED AT THE CONTRACTOR'S EXPENSE TO THE SATISFACTION OF THE ENGINEER OR VILLAGE.
- THE CONTRACTOR SHALL NOTIFY THE ENGINEER AT LEAST 48 HOURS IN ADVANCE OF BEGINNING WORK TO OBTAIN VILLAGE UTILITY LOCATIONS AND SHALL COORDINATE ALL CONSTRUCTION OPERATIONS WITH THE ENGINEER.
- MATERIALS RESULTING FROM THE REMOVAL OF PAVEMENT, DRIVEWAYS, CURB AND GUTTER, HOT-MIX ASPHALT SURFACES, SIDEWALKS AND EXCAVATION FOR NEW SIDEWALKS ETC. SHALL BE REMOVED AT THE END OF EACH DAY TO AN APPROVED SITE. IN THE JUDGMENT OF THE VILLAGE, SHOULD IT BE NECESSARY TO REMOVE SUCH MATERIALS, THE VILLAGE WILL HAVE THE MATERIAL REMOVED AND THE CONTRACTOR WILL BE BILLED (CHARGED) ACCORDINGLY.
- THE CONTRACTOR IS RESPONSIBLE FOR OBTAINING ALL WATER REQUIRED FOR THIS PROJECT FROM AN OFFSITE LOCATION.
- IT WILL BE THE CONTRACTOR'S RESPONSIBILITY TO NOTIFY RESIDENTS AND THE VILLAGE WHEN ACCESS TO THEIR DRIVEWAYS WILL BE TEMPORARILY CLOSED DUE TO DRIVEWAY REPLACEMENT. THE CONTRACTOR SHALL DISTRIBUTE NOTICES PROVIDED BY THE VILLAGE TO RESIDENTS. EVERY EFFORT SHALL BE MADE TO ACCOMMODATE ACCESS TO THESE PROPERTIES INCLUDING KNOCKING ON DOORS WHEN DRIVEWAYS ARE ABOUT TO BE CLOSED.
- THE CONTRACTOR SHALL PROTECT AND CAREFULLY PRESERVE ALL SECTION OR SUBSECTION MONUMENTS OR PROPERTY OR REFERENCE MARKERS UNTIL THE OWNERS, HIS AGENT OR AN AUTHORIZED SURVEYOR HAS WITNESSED OR OTHERWISE REFERENCED THEIR LOCATIONS.
- THE CONTRACTOR SHALL NOTIFY IDOT BUREAU OF MATERIALS (PHONE 847-705-4337) AT LEAST 24 HOURS PRIOR TO THE PLACEMENT OF HMA OR CONCRETE.
- ANY SIGNS OR MAILBOXES THAT ARE IN CONFLICT WITH THE PROPOSED CONSTRUCTION SHALL BE REMOVED AND REPLACED IN ACCORDANCE WITH VILLAGE STANDARDS AND INCLUDED IN THE COST OF THE CONTRACT. MAIL SERVICE SHALL BE MAINTAINED AT ALL TIMES.
- THE CONTRACTOR SHALL PROVIDE AND INSTALL TWO (2) WEIGHTED SANDBAGS ON EACH TYPE I OR TYPE II BARRICADE USED. ONE (1) WEIGHTED SANDBAG SHALL BE PLACED ACROSS EACH BOTTOM RAIL.
- THE PRIME COAT APPLICATION RATE SHALL BE 0.1 GAL/SY.
- ALL AGGREGATE USED ON THIS PROJECT SHALL BE CRUSHED MATERIAL.
- THE DAYS PAVING OPERATION SHALL RESULT IN A SINGLE TRANSVERSE JOINT. ANY COLD LONGITUDINAL JOINTS WILL NOT BE ACCEPTED. PROVIDING A SINGLE TRANSVERSE JOINT SHALL BE ACCOMPLISHED BY PAVING ONE LANE OF SUFFICIENT LENGTH THAT WILL ALLOW FOR THE PAVING OF THE ADJACENT LANE IN THE SAME DAY.

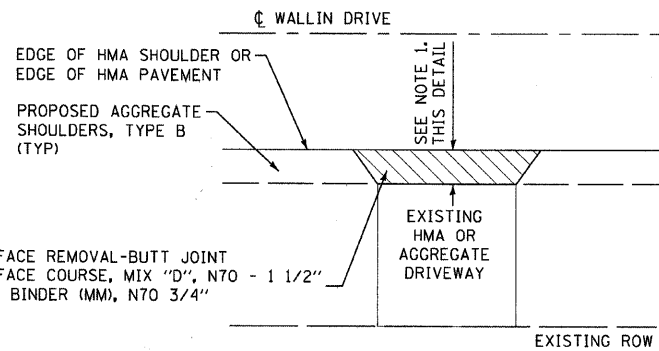
- THE CONTRACTOR SHALL UTILIZE A MECHANICAL SWEEPER TO CLEAN STREETS AFFECTED BY CONTRACTORS OPERATIONS, INCLUDING HAUL ROUTES, AT LEAST TWICE PER WEEK AND ADDITIONALLY AS DIRECTED BY THE ENGINEER. THIS WORK SHALL BE INCLUDED IN THE COST OF CONSTRUCTION.
- NO DAMAGE TO PARKWAYS IS PLANNED AS PART OF THESE IMPROVEMENTS. ANY AND ALL RESTORATION OF DAMAGED PARKWAYS SHALL CONSIST OF NECESSARY SUB-GRADE MATERIAL AS APPROVED BY THE ENGINEER, TOPSOIL 4-INCH AND NATIVE SOD IN ACCORDANCE WITH SECTION 10B1.03. RESTORATION SHALL BE INCLUDED IN THE PAY ITEM WHICH CAUSED THE DISTURBANCE.

F.A.U. RTE.	SECTION	COUNTY	TOTAL SHEETS	SHEET NO.
*	09-00046-00-RS	WILL	12	2
STA.		TO STA.		
FED. ROAD DIST. NO.	ILLINOIS	FED AID PROJECT		
C-91-725-09		ARA-9003-(396)		

\*FAU 0349 WALLIN DRIVE  
CONTRACT NO. 63226

**INDEX OF SHEETS**

SHEET NO.	TITLE
1	COVER SHEET
2	INDEX OF SHEETS, HIGHWAY STANDARDS, AND GENERAL NOTES
3	SUMMARY OF QUANTITIES AND SCHEDULE OF QUANTITIES
4	TYPICAL SECTIONS AND HMA MIXTURE REQUIREMENTS
5-7	RESURFACING AND PAVEMENT MARKING PLANS
8	DISTRICT 1 DETAIL - BD-32 BUTT JOINTS AND HMA TAPER DETAILS
9	DISTRICT 1 DETAIL - TC-10 TRAFFIC CONTROL AND PROTECTION FOR SIDE ROADS, INTERSECTIONS, AND DRIVEWAYS
10	DISTRICT 1 DETAIL - TC-13 DISTRICT ONE TYPICAL PAVEMENT MARKINGS
11	DISTRICT 1 DETAIL - TC-18 SIGNING FOR FLAGGING OPERATIONS AT WORK ZONE OPENINGS
12	DISTRICT 1 DETAIL - TC-22 ARTERIAL ROAD INFORMATION SIGN



- NOTES: 1. 5' MIN WHEN MATCHING EXISTING HMA DRIVEWAY  
3' MIN. WHEN MATCHING EXISTING AGGREGATE DRIVEWAY

**HMA DRIVEWAY DETAIL**  
NO SCALE

**HIGHWAY STANDARDS**

000001-05	STANDARD SYMBOLS, ABBREVIATIONS, AND PATTERNS
482011-03	HMA SHLD. STRIPS/SHLDS. WITH RESURFACING OR WIDENING AND RESURFACING PROJECTS
701011-02	OFF-RD MOVING OPERATIONS, 2L, 2W DAY ONLY
701301-03	LANE CLOSURE, 2L 2W, SHORT TIME OPERATIONS
701311-03	LANE CLOSURE, 2L 2W, MOVING OPERATIONS-DAY ONLY
701501-05	URBAN LANE CLOSURE, 2L,2W, UNDIVIDED
701801-04	LANE CLOSURE MULTILANE, 1W OR 2W CROSSWALK OR SIDEWALK CLOSURE
701901-01	TRAFFIC CONTROL DEVICES
780001-02	TYPICAL PAVEMENT MARKINGS

COPYRIGHT © 2009 BY BAXTER & WOODMAN, INC.  
 STATE OF ILLINOIS - PROFESSIONAL DESIGN FIRM  
 LICENSE NO. - BR-000121 - EXPIRES 4/30/2009  
 8/27/2009 3:02:56 PM  
 \\c:\p\work\production\projects\miller\09-00046-00-RS\09-00046-00-RS-GenNotes.dwg  
 ARR-CADD-SURVEY\DRM\MMCS\0045\09-00046-00-RS-GenNotes.dwg



USER NAME = 566bcd	DESIGNED - JGH	REVISED - IDOT REVIEW 6-29-09
FILE NAME = 090439-GenNotes.dwg	DRAWN - BCD	REVISED -
PLOT DATE = 8/27/2009	CHECKED - NJP	REVISED -
	DATE - 05-22-09	REVISED -

**VILLAGE OF PLAINFIELD, ILLINOIS**  
**FAU ROUTE 0349 WALLIN DRIVE**  
**LAPP IMPROVEMENTS**

**INDEX OF SHEETS, HIGHWAY STANDARDS, DETAILS AND GENERAL NOTES**

SCALE: NONE STA. TO STA.

F.A.U. RTE.	SECTION	COUNTY	TOTAL SHEETS	SHEET NO.
*	09-00046-00-RS	WILL	12	2
FED. ROAD DIST. NO.		CONTRACT NO.		
ILLINOIS		63226		
		FED. AID PROJECT		

**SUMMARY OF QUANTITIES**

F.A.U. RTE.	SECTION	COUNTY	TOTAL SHEETS	SHEET NO.
• 09-00046-00-RS	WILL		12	3
STA.	TO STA.			
FED. ROAD DIST. NO. C-91-725-09	ILLINOIS	FED AID PROJECT ARA-9003-(396)		

•FAU 0349 WALLIN DRIVE  
CONTRACT NO. 63226

CODE NO.	PAY ITEM	UNIT	CONSTRUCTION CODE 1000 TOTAL QUANTITY
20201006	GRADING AND SHAPING SHOULDERS	UNIT	43
40600100	BITUMINOUS MATERIALS (PRIME COAT)	GAL	1576
40600300	AGGREGATE (PRIME COAT)	TON	32
40600635	LEVELING BINDER (MACHINE METHOD), N70	TON	680
40600982	HOT-MIX ASPHALT SURFACE REMOVAL - BUTT JOINT	SQ YD	176
40603340	HOT-MIX ASPHALT SURFACE COURSE, MIX "D", N70	TON	1360
44000198	HOT-MIX ASPHALT SURFACE REMOVAL, VARIABLE DEPTH	SQ YD	155
48101200	AGGREGATE SHOULDERS, TYPE B	TON	668
67100100	MOBILIZATION	LSUM	1
70101700	TRAFFIC CONTROL AND PROTECTION	LSUM	1
78000100	THERMOPLASTIC PAVEMENT MARKING - LETTERS AND SYMBOLS	SQ FT	73
• 78000200	THERMOPLASTIC PAVEMENT MARKING - LINE, 4"	FOOT	15847
• 78000400	THERMOPLASTIC PAVEMENT MARKING - LINE, 6"	FOOT	618
• 78000600	THERMOPLASTIC PAVEMENT MARKING - LINE, 12"	FOOT	119
• 78000650	THERMOPLASTIC PAVEMENT MARKING - LINE, 24"	FOOT	32
• 78300200	RAISED REFLECTIVE PAVEMENT MARKER REMOVAL	EACH	35
X0322256	TEMPORARY INFORMATION SIGNING	SQ FT	90

• INDICATES SPECIALTY ITEM

PROJECT # 2006 BY BAXTER & WOODMAN, INC. ...  
 STATE # 09-00046-00-RS ...  
 LICENSE NO. 384-00121 - EXPIRES 4/30/2009 ...  
 8/27/2009 2:56:39 PM



USER NAME = 566bed	DESIGNED - JGH	REVISED - IDOT REVIEW 6-29-09
FILE NAME = 090439-500.sht	DRAWN - BCD	REVISED -
PLOT DATE = 8/27/2009	CHECKED - NJP	REVISED -
	DATE - 05-22-09	REVISED -

**VILLAGE OF PLAINFIELD, ILLINOIS  
FAU ROUTE 0349 WALLIN DRIVE  
LAPP IMPROVEMENTS**

**SUMMARY OF QUANTITIES**

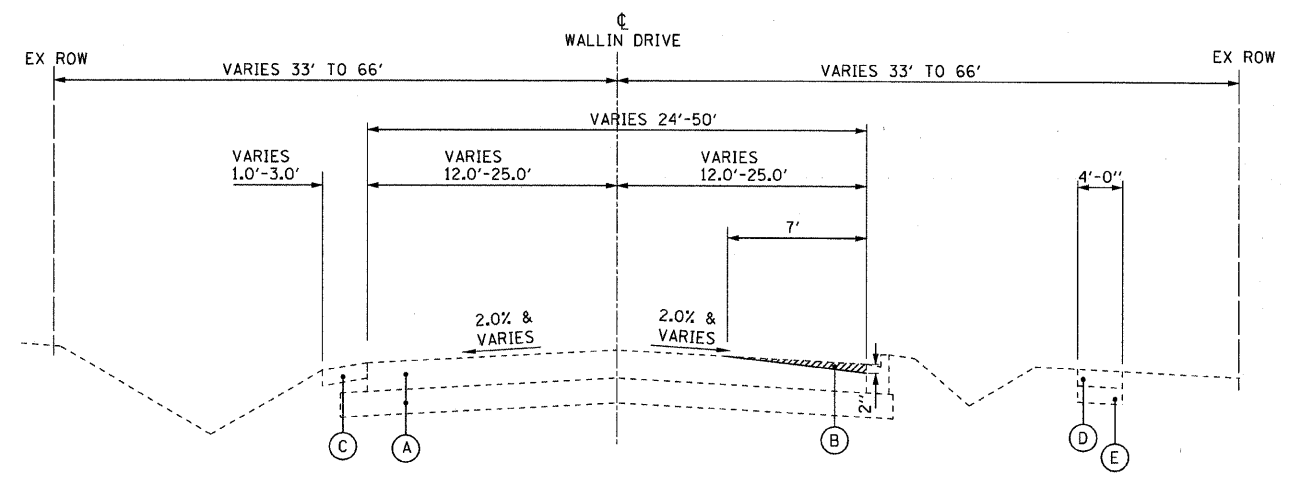
SCALE: NONE

STA. TO STA.

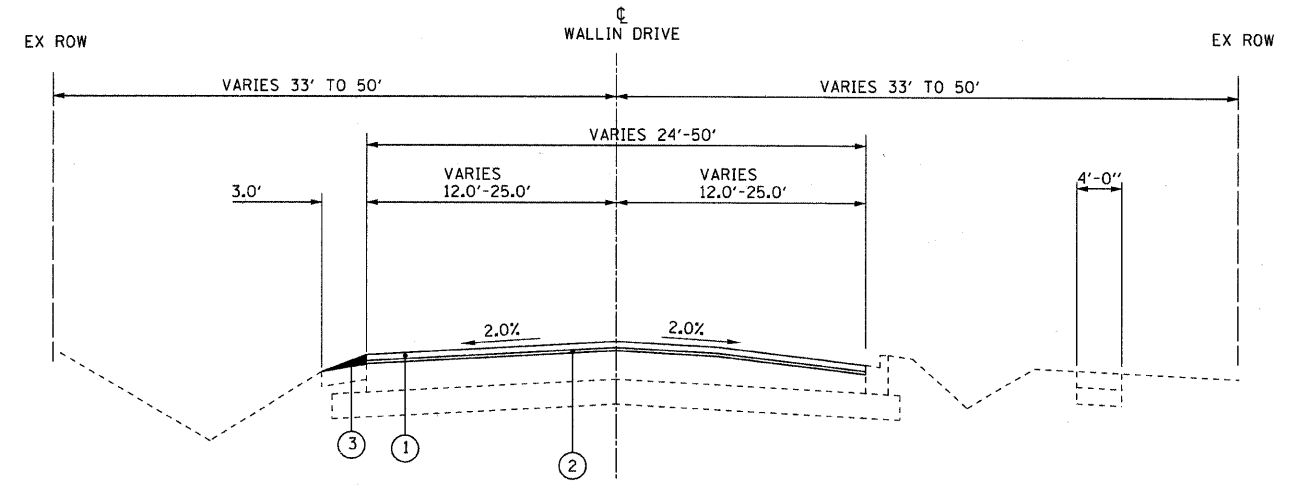
F.A. RTE.	SECTION	COUNTY	TOTAL SHEETS	SHEET NO.
• 09-00046-00-RS	WILL		12	3
FED. ROAD DIST. NO.	ILLINOIS	CONTRACT NO. 63226		
		FED. AID PROJECT		

F.A.U. RTE.	SECTION	COUNTY	TOTAL SHEETS	SHEET NO.
* 09-00046-00-RS		WILL	12	4
STA.	TO STA.			
FED. ROAD DIST. NO. C-91-725-09	ILLINOIS	FED AID PROJECT ARA-9003-(396)		

\*FAU 0349 WALLIN DRIVE  
CONTRACT NO. 63226



**EXISTING TYPICAL SECTION  
WALLIN DRIVE**



**PROPOSED TYPICAL SECTION  
WALLIN DRIVE**

**EXISTING LEGEND**

- (A) HOT-MIX ASPHALT PAVEMENT, 7 5/8" - 13 1/4"  
AGGREGATE BASE COURSE, 1" - 5"  
OR  
HOT-MIX ASPHALT PAVEMENT, 2 3/4" - 7 3/4"  
PCC BASE COURSE, 3 5/8" - 11"  
(SEE PAVEMENT CORE DATA IN SPECIFICATIONS)
- (B) HMA SURFACE REMOVAL, VARIABLE DEPTH\*
- (C) AGGREGATE SHOULDERS, VARIABLE DEPTH
- (D) PCC SIDEWALK
- (E) AGGREGATE BASE COURSE

\*TO BE USED IN AREAS WHERE CURB RETURNS  
FROM ENTRANCES ABUTT THE PAVEMENT

**PROPOSED LEGEND**

- (1) HOT-MIX ASPHALT SURFACE COURSE, MIX "D", N70 - 1 1/2"
- (2) LEVELING BINDER (MACHINE METHOD), N70 - 3/4"
- (3) AGGREGATE SHOULDERS, TYPE B, 2"

**HOT-MIX ASPHALT MIXTURE REQUIREMENTS**

ITEM	AIR VOIDS
<b>RESURFACING</b>	
HOT-MIX ASPHALT SURFACE COURSE, MIX "D", N70 (IL 9.5 mm), 1 1/2"	4% @ 70 Gyr
LEVELING BINDER (MACHINE METHOD), N70 (IL 9.5 mm), 3/4"	4% @ 70 Gyr

THE UNIT WEIGHT USED TO CALCULATE ALL HOT-MIX ASPHALT SURFACES IS 112 LBS/SO YD/IN.  
FOR "AC TYPE" AND "PERCENT RAP" SEE DISTRICT ONE SPECIAL PROVISIONS.

COPYRIGHT © 2008 BY BAXTER & WOODMAN, INC.  
 STATE OF ILLINOIS - PROFESSIONAL DESIGN FIRM  
 LICENSE NO. - 04-00121 - EXPIRES 4/30/2009  
 369555 PM  
 \\c:\p2\boxwood\cadd\p\090439-wallin\090439-TYP.dwg  
 \\c:\p2\boxwood\cadd\p\090439-wallin\090439-TYP.dwg  
 \\c:\p2\boxwood\cadd\p\090439-wallin\090439-TYP.dwg



USER NAME = 556bcd	DESIGNED - JGH	REVISED - IDOT REVIEW 6-29-09
FILE NAME = 090439-TYP.sht	DRAWN - BCD	REVISED - IDOT REVIEW 8-13-09
PLOT DATE = 8/27/2009	CHECKED - NJP	REVISED -
	DATE - 05-22-09	REVISED -

**VILLAGE OF PLAINFIELD, ILLINOIS  
FAU ROUTE 0349 WALLIN DRIVE  
LAPP IMPROVEMENTS**

**TYPICAL SECTIONS AND  
HMA MIXTURE REQUIREMENTS**

SCALE: NONE

STA. TO STA.

F.A. RTE.	SECTION	COUNTY	TOTAL SHEETS	SHEET NO.
* 09-00046-00-RS		WILL	12	4
FED. ROAD DIST. NO.	CONTRACT NO. 63226			
ILLINOIS	FED. AID PROJECT			



BEGIN PROJECT  
STA 13+18

STA 10+00 WALLIN DRIVE  
LOCKPORT STREET

AGGREGATE SHOULDERS, TYPE B  
EX ROW  
HMA SURFACE COURSE, MIX "D", N70 - 1 1/2"  
LEVELING BINDER (MM) N70 - 3/4"  
EXISTING PCC MEDIAN

EXISTING Q WALLIN DRIVE

+59

MATCH LINE STA 17+00

LOCKPORT STREET  
(IL RTE 126)

10+00

11

12

13

15+00

12

16

HMA SURFACE REMOVAL-BUTT JOINT  
THERMOPLASTIC PAVEMENT MARKING -  
LINE, 4" (WHITE EDGE LINE)

THERMOPLASTIC PAVEMENT MARKING -  
LINE, 6" (WHITE 2' DASH, 6' SKIP)

AGGREGATE SHOULDERS, TYPE B  
EXISTING PCC MEDIAN

THERMOPLASTIC PAVEMENT MARKING -  
LINE, 4" (WHITE EDGE LINE)

THERMOPLASTIC PAVEMENT MARKING -  
LINE, 4" (YELLOW)

EX ROW

EXISTING Q WALLIN DRIVER

+15

+75

MATCH LINE STA 23+00

MATCH LINE STA 17+00

17

18

19

20+00

21

22

26

HMA SURFACE COURSE, MIX "D", N70 - 1 1/2"  
LEVELING BINDER (MM) N70 - 3/4"

THERMOPLASTIC PAVEMENT MARKING -  
LINE, 4" (DOUBLE YELLOW, 11" C-C)

THERMOPLASTIC PAVEMENT MARKING -  
LINE, 4" (YELLOW, 10' DASH, 30' SKIP)

EX ROW

THERMOPLASTIC PAVEMENT MARKING -  
LINE, 6" (YELLOW, MATCH EXISTING)



COPYRIGHT © 2009, BY BAXTER & WOODMAN, INC.  
 STATE OF ILLINOIS - PROFESSIONAL DESIGN FIRM  
 LICENSE NO. - 184-00121 - EXPIRES 4/30/2011  
 8/19/2009 7:55:19 AM  
 ...:\PD\11717 (low res for E-mail).plt  
 ...:\CADD-SURVEY\PL0TS\B&W.tbl  
 ...:\corp\Baxwood.com\projects\mokena\pfd\090439-WallinDr - ARR\CADD-SURVEY\DRAWINGS\DCONS\090439-Plan01.sht

**Baxter & Woodman**  
 Crystal Lake, Illinois 815.439.1290  
 Danville, Illinois 815.782.7834  
 Mokena, Illinois 708.472.8090  
 DeKalb, Illinois 815.787.8111  
 Crystal Lake, Illinois 815.439.5088  
 Chicago, Illinois 312.578.0050  
 Plainfield, Illinois 815.609.7425

USER NAME = 566bed	DESIGNED - JGH	REVISED - IDOT REVIEW 6-29-09
FILE NAME = 090439-Plan01.sht	DRAWN - BCD	REVISED - IDOT REVIEW 8-17-09
PL0T DATE = 8/19/2009	CHECKED - NJP	REVISED -
	DATE - 6-30-09	REVISED -

**VILLAGE OF PLAINFIELD, ILLINOIS**  
**FAU ROUTE 0349 WALLIN DRIVE**  
**LAPP IMPROVEMENTS**

**RESURFACING & PAVEMENT MARKING PLAN**  
 SCALE: 1"=50'  
 STA. TO STA.

F.A. RTE.	SECTION	COUNTY	TOTAL SHEETS	SHEET NO.
09-00045-00-RS	WILL	12	5	
FED. ROAD DIST. NO.	CONTRACT NO. 63226			
C-91-725-09	ILLINOIS	FED. AID PROJECT ARA-9003-13961		

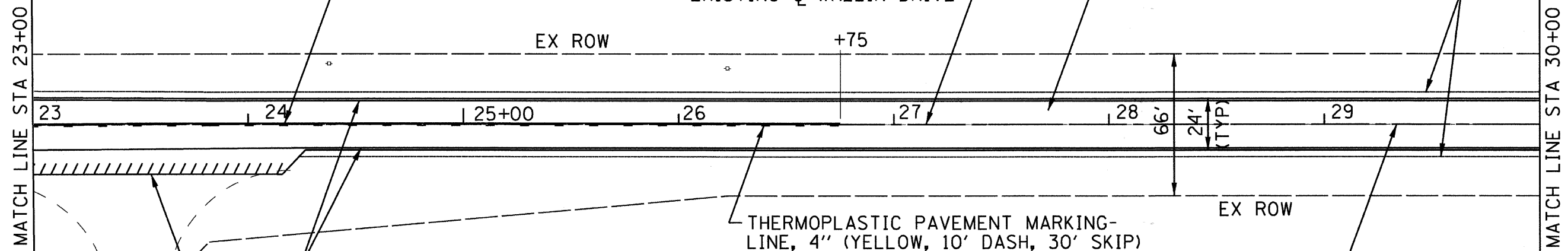


THERMOPLASTIC PAVEMENT MARKING LINE, 4" (YELLOW)

HMA SURFACE COURSE, MIX "D", N70 - 1 1/2" LEVELING BINDER (MM) N70 - 3/4"

EXISTING  $\phi$  WALLIN DRIVE

AGGREGATE SHOULDERS, TYPE B



EX ROW

+75

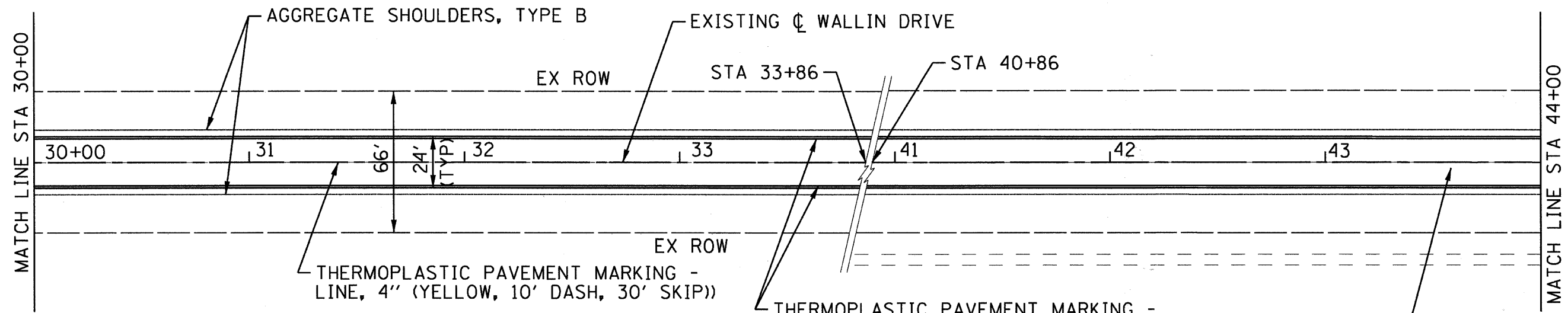
EX ROW

THERMOPLASTIC PAVEMENT MARKING - LINE, 4" (YELLOW, 10' DASH, 30' SKIP)

THERMOPLASTIC PAVEMENT MARKING - LINE, 4" (WHITE EDGE LINE)

THERMOPLASTIC PAVEMENT MARKING - LINE, 4" (YELLOW, 10' DASH, 30' SKIP)

HMA SURFACE REMOVAL - BUTT JOINT



AGGREGATE SHOULDERS, TYPE B

EXISTING  $\phi$  WALLIN DRIVE

EX ROW

STA 33+86

STA 40+86

THERMOPLASTIC PAVEMENT MARKING - LINE, 4" (YELLOW, 10' DASH, 30' SKIP)

THERMOPLASTIC PAVEMENT MARKING - LINE, 4" (WHITE EDGE LINE)

HMA SURFACE COURSE, MIX "D", N70 - 1 1/2" LEVELING BINDER (MM) N70 - 3/4"

COPYRIGHT © 2009, BY BAXTER & WOODMAN, INC. STATE OF ILLINOIS - PROFESSIONAL DESIGN FIRM LICENSE NO. - 184-001121 - EXPIRES 4/30/2011 566bcd 8/19/2009 7:55:51AM

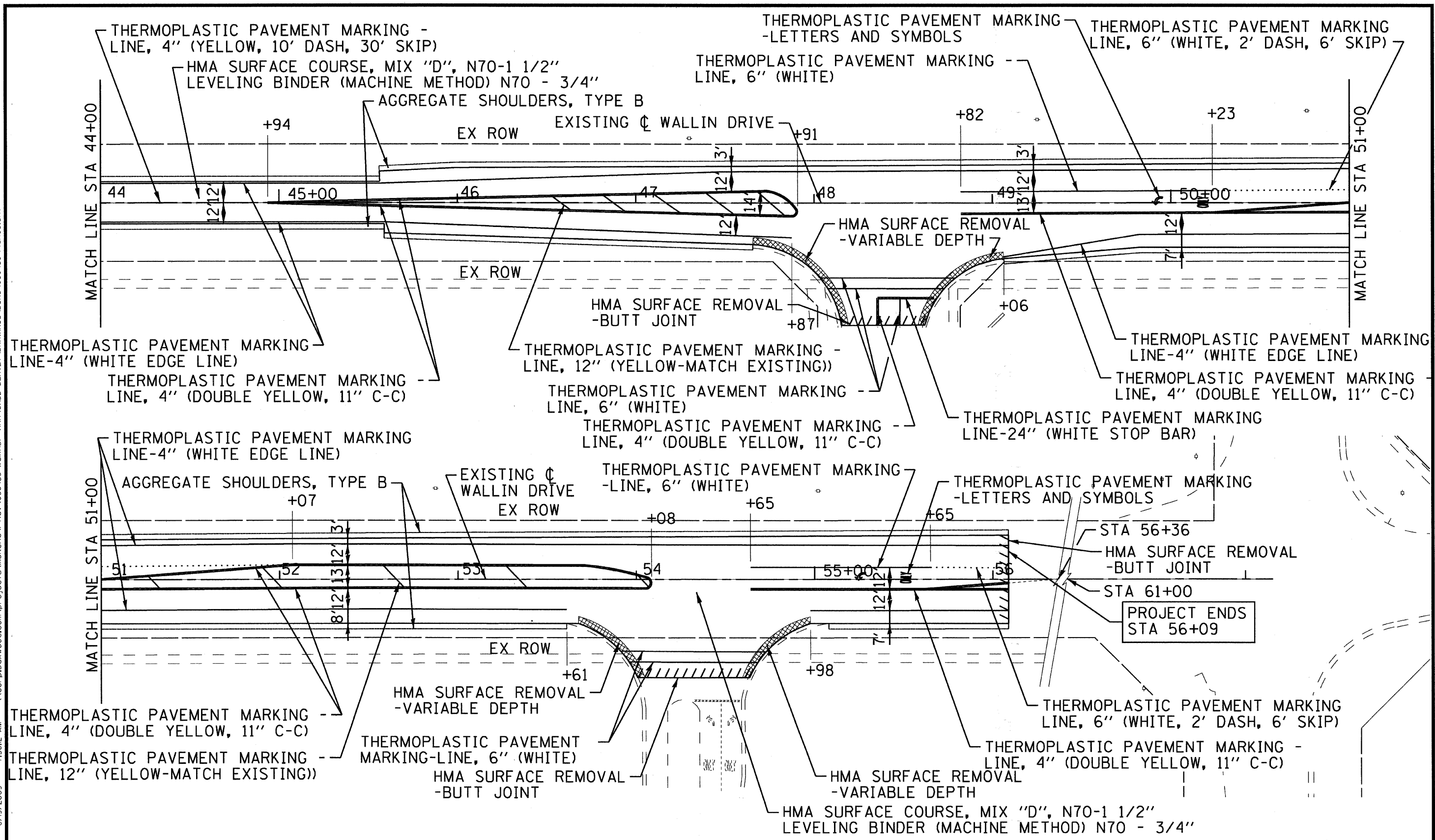
**Baxter & Woodman**  
 Digital Lake, Illinois 815-438-1200  
 Burlington, Wisconsin 882-782-7824  
 Moline, Illinois 782-478-2000  
 DeKalb, Illinois 815-787-9111  
 Oreganville, Illinois 847-223-0088  
 Chicago, Illinois 312-278-0050  
 Plainfield, Illinois 815-608-7425

USER NAME = 566bcd	DESIGNED - JGH	REVISED - IDOT REVIEW 6-29-09
FILE NAME = 090439-Plan02.sht	DRAWN - BCD	REVISED - IDOT REVIEW 8-17-09
PLOT DATE = 8/19/2009	CHECKED - NJP	REVISED -
	DATE - 6-30-09	REVISED -

**VILLAGE OF PLAINFIELD, ILLINOIS**  
**FAU ROUTE 0349 WALLIN DRIVE**  
**LAPP IMPROVEMENTS**

<b>RESURFACING &amp; PAVEMENT MARKING PLAN</b>	
SCALE: 1"=50'	STA. TO STA.

F.A. RTE.	SECTION	COUNTY	TOTAL SHEETS	SHEET NO.
*	09-00045-00-RS	WILL	12	6
FED. ROAD DIST. NO.		CONTRACT NO. 63226		
C-91-725-09	ILLINOIS	FED. AID PROJECT ARA-9003-1396		

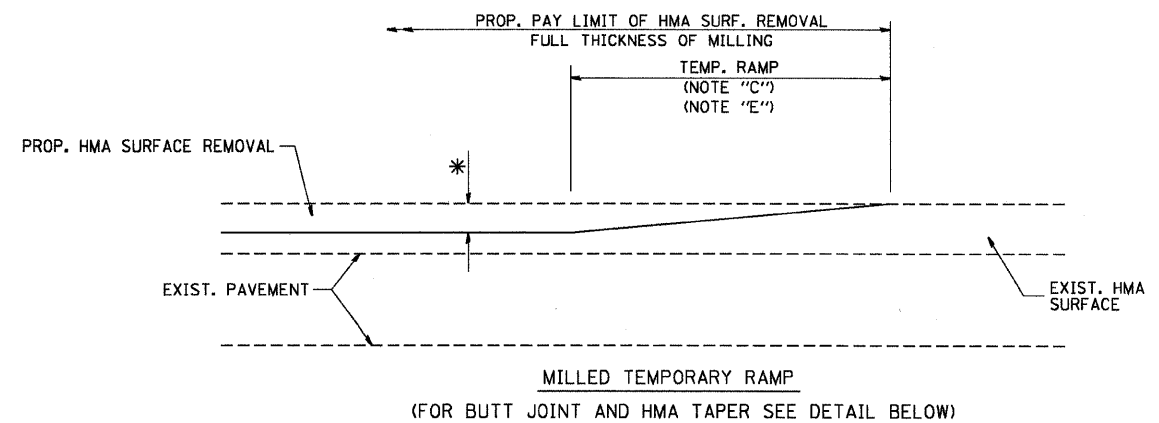


COPYRIGHT © 2009, BY BAXTER & WOODMAN, INC.  
 STATE OF ILLINOIS - PROFESSIONAL DESIGN FIRM  
 LICENSE NO. 184-00121 - EXPIRES 4/30/2011  
 566bdc  
 \\cortp.baxwood.com\projects\mokena\p1\090439-WallinDr-ARR\CADD-SURVEY\DRAWINGS\DCNS\090439-Plan03.sht  
 \\cortp.baxwood.com\projects\mokena\p1\090439-WallinDr-ARR\CADD-SURVEY\PLOTS\B&W.tbl  
 PDFPlot7 (low res for E-mail).plt

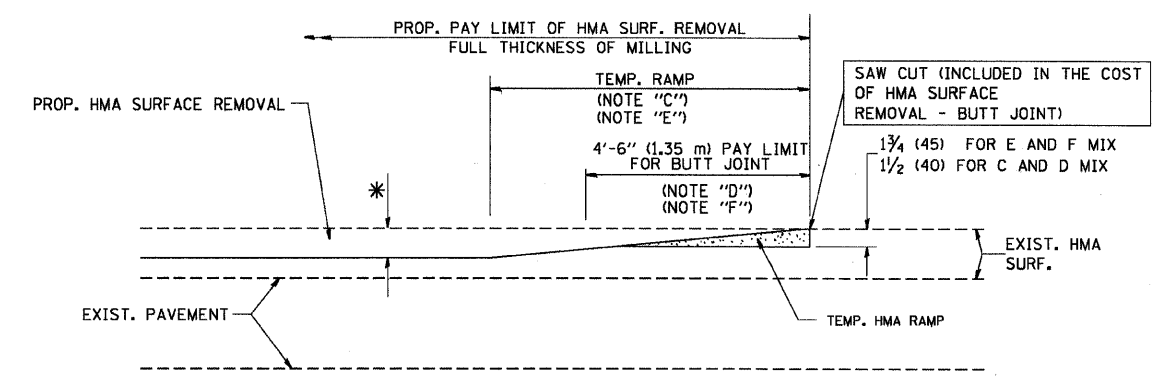
<b>Baxter &amp; Woodman</b> Crystal Lake, Illinois 815.459.1280 Burlington, Wisconsin 800.755.7834 Mokena, Illinois 708.478.2090 DuQuoin, Illinois 618.787.8111 O'Fallon, Illinois 618.223.5088 Chicago, Illinois 312.578.0050 Plainfield, Illinois 618.509.7428	USER NAME = 566bcd FILE NAME = 090439-Plan03.sht PLOT DATE = 8/19/2009	DESIGNED - JGH DRAWN - BCD CHECKED - NJP DATE - 6-30-09	REVISED - IDOT REVIEW 6-29-09 REVISED - IDOT REVIEW 8-17-09 REVISED - REVISED -	<b>VILLAGE OF PLAINFIELD, ILLINOIS</b> <b>FAU ROUTE 0349 WALLIN DRIVE</b> <b>LAPP IMPROVEMENTS</b>	<b>RESURFACING &amp; PAVEMENT MARKING PLAN</b> SCALE: 1"=50' STA. TO STA.	F.A. RTE. 09-00045-00-RS COUNTY WILL SECTION 12 SHEET NO. 7 CONTRACT NO. 63226 FED. AID PROJECT ARA-9003-13961
					PROJECT ENDS STA 56+09	
					STA 56+36 HMA SURFACE REMOVAL - BUTT JOINT STA 61+00	

F.A.U. RTE.	SECTION	COUNTY	TOTAL SHEETS	SHEET NO.
*	09-00046-00-RS	WILL	12	8
STA.	TO STA.			
FED. ROAD DIST. NO.	ILLINOIS	FED AID PROJECT		

\*FAU 0349 WALLIN DRIVE  
CONTRACT NO. 63226

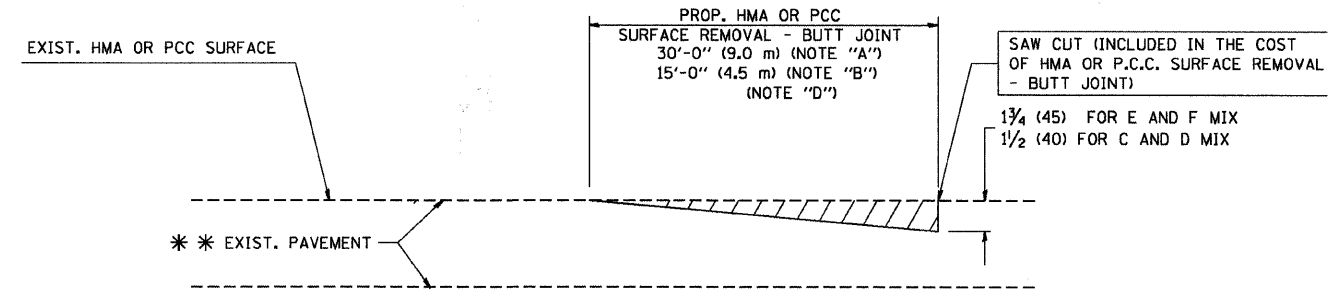


**OPTION 1**

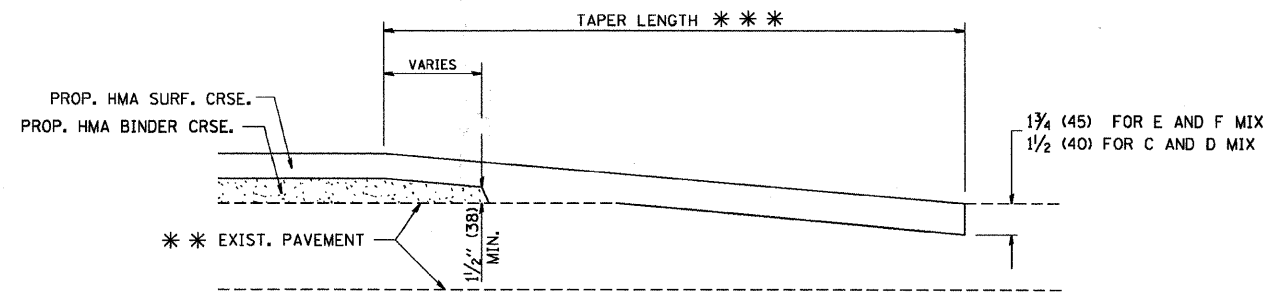


**OPTION 2**

**TYPICAL TEMPORARY RAMP**



**BUTT JOINT DETAIL**



**HMA TAPER DETAIL**

**TYPICAL BUTT JOINT AND HMA TAPER FOR RESURFACING ONLY**

\*\*\* PC CONCRETE, HMA OR HMA RESURFACED PAVEMENT.

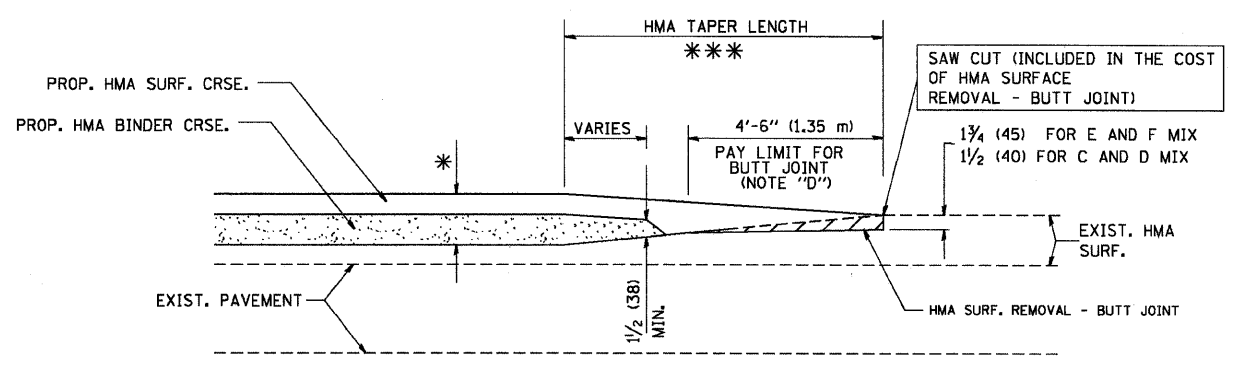
**NOTES**

- A: MAINLINE ROADWAYS AND MAJOR SIDE ROADS.
- B: MINOR SIDE ROADS.
- C: THE TEMP. RAMP SHALL BE CONSTRUCTED IMMEDIATELY UPON REMOVAL OF THE EXISTING HMA SURFACE.
- D: THE BUTT JOINT SHALL BE CONSTRUCTED IMMEDIATELY PRIOR TO PLACING THE PROPOSED HMA COURSES.
- E: TAPER THE TEMP. RAMP AT A RATE OF 3'-0" (900 mm) PER 1 INCH (25 mm) OF MILLING THICKNESS.
- F: INSTALLATION AND REMOVAL OF THE 4'-6" (1.35 m) TEMP. RAMP IS INCLUDED IN COST OF HMA SURFACE REMOVAL - BUTT JOINT
- G: SEE ARTICLE 406.08 AND 406.14 OF THE STANDARD SPECIFICATIONS FOR "HMA AND/OR PCC SURFACE REMOVAL, BUTT JOINT".
- \* SEE TYPICAL SECTIONS FOR MILLING THICKNESS.
- \*\*\* 20'-0" (6.1 m) PER 1 (25) RESURFACING (NOTE "A")  
10'-0" (3.0 m) PER 1 (25) RESURFACING (NOTE "B")

**BASIS OF PAYMENT:**

THE BUTT JOINT WILL BE PAID FOR AT THE CONTRACT UNIT PRICE PER SQUARE YARD (SQUARE METER) FOR "HOT-MIX ASPHALT SURFACE REMOVAL - BUTT JOINT" OR FOR "PORTLAND CEMENT CONCRETE SURFACE REMOVAL - BUTT JOINT".

ALL DIMENSIONS ARE IN INCHES (MILLIMETERS) UNLESS OTHERWISE SHOWN.



**BUTT JOINT AND HMA TAPER**

**TYPICAL BUTT JOINT AND HMA TAPER FOR MILLING AND RESURFACING**

FILE NAME = W:\data\22x34\bd32.dgn	USER NAME = geglianobt	DESIGNED - M. DE YONG	REVISED - R. SHAH 10-25-94
		DRAWN -	REVISED - A. ABBAS 03-21-97
		CHECKED -	REVISED - M. GOMEZ 04-06-01
		DATE - 06-13-90	REVISED - R. BORO 01-01-07

**STATE OF ILLINOIS  
DEPARTMENT OF TRANSPORTATION**

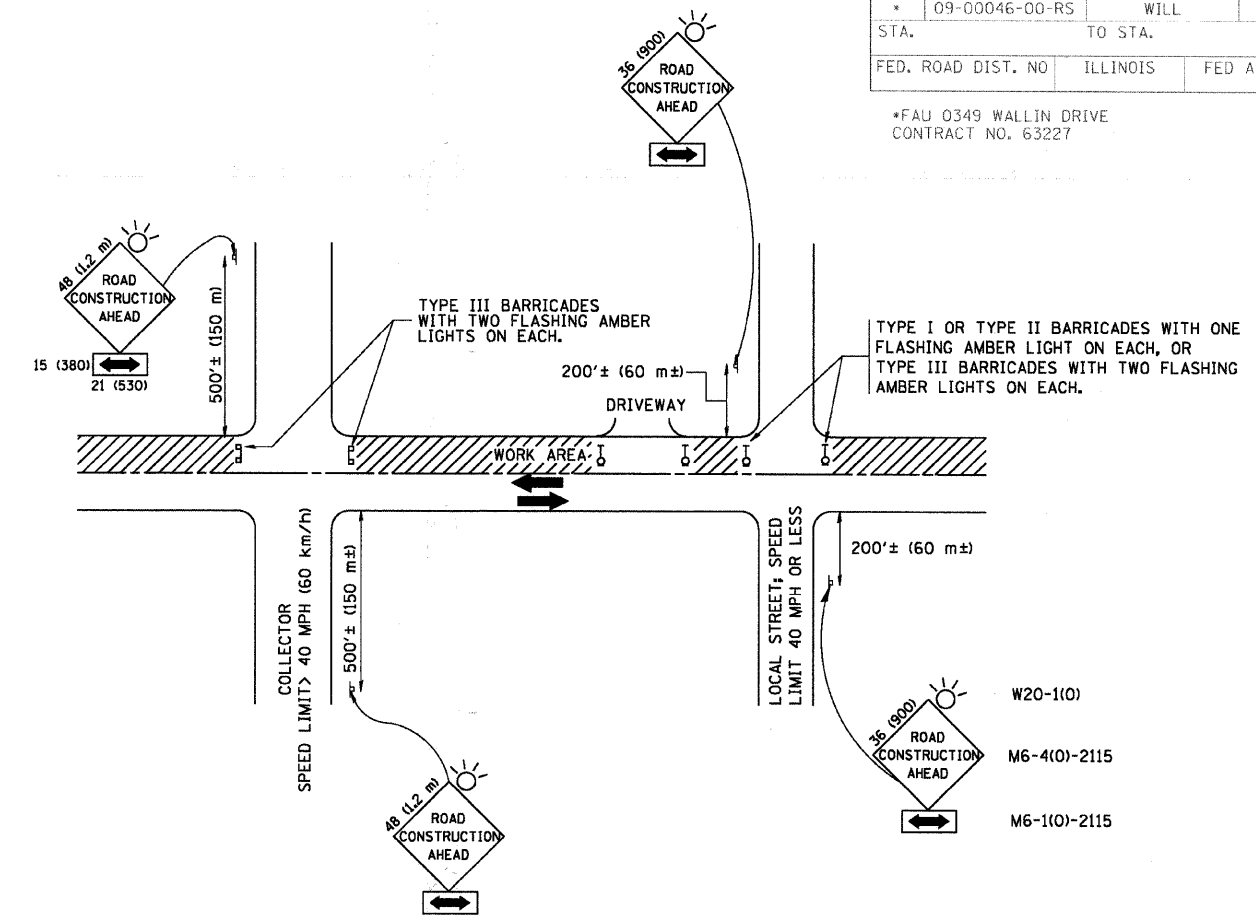
<b>BUTT JOINT AND HMA TAPER DETAILS</b>	
SCALE: NONE	SHEET NO. 1 OF 1 SHEETS
STA.	TO STA.

F.A. RTE.	SECTION	COUNTY	TOTAL SHEETS	SHEET NO.
*	09-00046-00-RS	WILL	12	8
<b>BD400-05 BD32</b>		<b>CONTRACT NO. 63226</b>		
FED. ROAD DIST. NO. 1	ILLINOIS	FED. AID PROJECT		



F.A.U. RTE.	SECTION	COUNTY	TOTAL SHEETS	SHEET NO.
*	09-00046-00-RS	WILL	12	9
STA.		TO STA.		
FED. ROAD DIST. NO.		ILLINOIS	FED AID PROJECT	

\*FAU 0349 WALLIN DRIVE  
CONTRACT NO. 63227



### TRAFFIC CONTROL AND PROTECTION FOR SIDE ROADS, INTERSECTIONS, AND DRIVEWAYS

#### NOTES:

- A. FOR NO LANE RESTRICTION ON THE SIDE ROAD OR DRIVEWAYS**
- SIDE ROAD WITH A SPEED LIMIT OF 40 MPH (60 km/h) OR LESS AS SHOWN ON THE DRAWING AND AS DIRECTED BY THE ENGINEER:
    - ONE **ROAD CONSTRUCTION AHEAD** SIGN 36 x 36 (900x900) WITH A FLASHER AND FLAG MOUNTED ON IT APPROXIMATELY 200' (60 m) IN ADVANCE OF THE MAIN ROUTE.
    - THE CLOSED PORTION OF THE MAIN ROUTE SHALL BE PROTECTED BY BLOCKING WITH TYPE I, TYPE II OR TYPE III BARRICADES, 1/3 OF THE CROSS SECTION OF THE CLOSED PORTION.
  - SIDE ROAD WITH A SPEED LIMIT GREATER THAN 40 MPH (60 km/h) AS SHOWN ON THE DRAWING AND AS DIRECTED BY THE ENGINEER:
    - ONE **ROAD CONSTRUCTION AHEAD** SIGN 48 x 48 (1.2 m x 1.2 m) WITH A FLASHER MOUNTED ON IT APPROXIMATELY 500' (150 m) IN ADVANCE OF THE MAIN ROUTE.
    - THE CLOSED PORTION OF THE MAIN ROUTE SHALL BE PROTECTED BY BLOCKING WITH TYPE III BARRICADES, 1/2 OF THE CROSS SECTION OF THE CLOSED PORTION.
  - WHEN THE SIDE ROAD LIES BETWEEN THE BEGINNING OF THE MAINLINE SIGNING AND THE WORK ZONE, A SINGLE HEADED ARROW (M6-1) SHALL BE USED IN LIEU OF THE DOUBLE HEADED ARROW (M6-4).
- B. FOR A LANE CLOSURE ON A SIDE ROAD OR DRIVEWAY:**
- USE APPLICABLE PORTIONS OF THE TYPICAL APPLICATION OF TRAFFIC CONTROL DEVICES (STD. 701501, STD. 701606 OR THE APPROPRIATE STANDARD). THE SPACING OF SIGNS AND BARRICADES SHALL BE ADJUSTED FOR FIELD CONDITIONS AS DIRECTED BY THE ENGINEER. THE DIRECTIONAL ARROW SHALL BE COVERED OR REMOVED WHEN NO LONGER CONSISTENT WITH THE SIDE ROAD LANE CLOSURE.
- C. ADVANCE WARNING SIGNS ARE TO BE OMITTED ON DRIVEWAY UNLESS OTHERWISE NOTED.**
- D. THE TRAFFIC CONTROL AND PROTECTION FOR SIDE ROADS, INTERSECTIONS, AND DRIVEWAYS SHALL BE INCIDENTAL TO THE COST OF SPECIFIED TRAFFIC CONTROL STANDARDS OR ITEMS.**

All dimensions are in millimeters (Inches) unless otherwise shown.

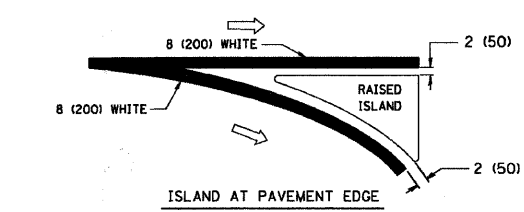
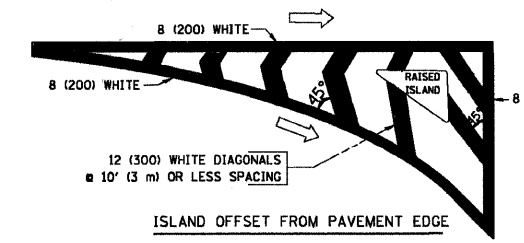
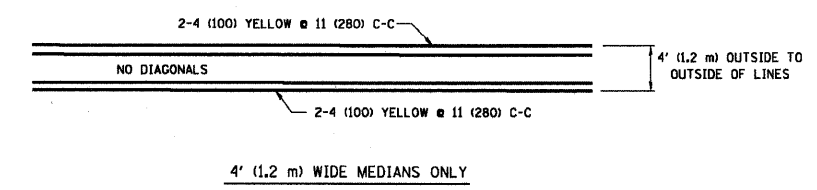
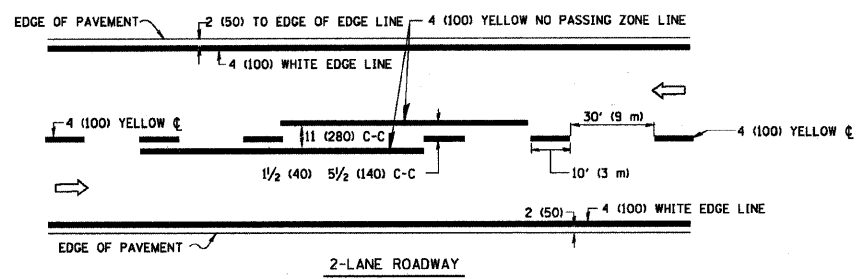
FILE NAME =	USER NAME = geglisenob	DESIGNED - LHA	REVISED - J. OBERLE 10-18-95
W:\dstatd\22x34\col8.dgn		DRAWN -	REVISED - A. HOUSEH 03-06-96
		PLOT SCALE = 60.000' / IN.	REVISED - A. HOUSEH 10-15-96
		PLOT DATE = 1/4/2000	REVISED - T. RAMMACH 01-06-00
		DATE - 06-89	

**STATE OF ILLINOIS  
DEPARTMENT OF TRANSPORTATION**

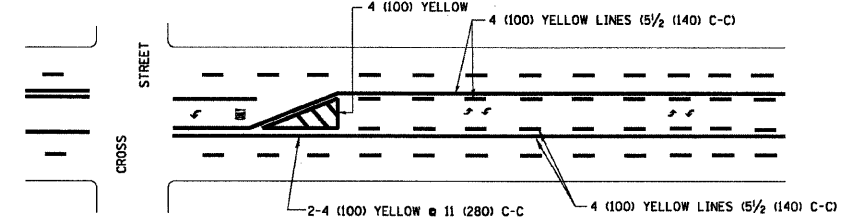
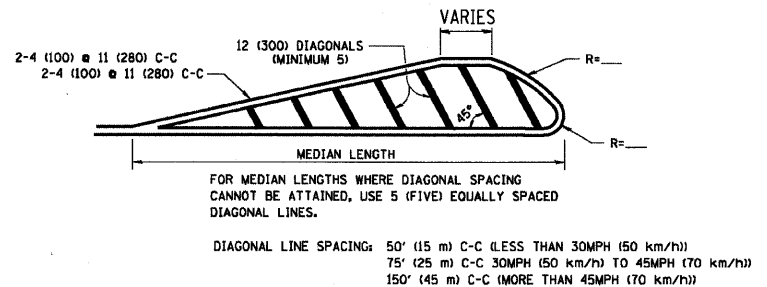
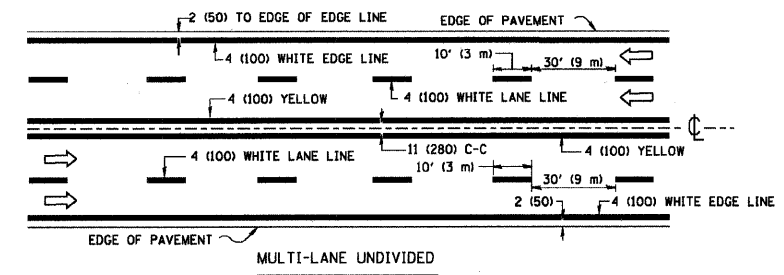
**TRAFFIC CONTROL AND PROTECTION FOR  
SIDE ROADS, INTERSECTIONS, AND DRIVEWAYS**

SCALE: NONE SHEET NO. 1 OF 1 SHEETS STA. TO STA.

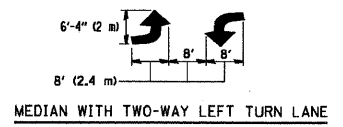
F.A.U. RTE.	SECTION	COUNTY	TOTAL SHEETS	SHEET NO.
*	09-00046-00-RS	WILL	12	9
TC-10		CONTRACT NO. 63226		
FED. ROAD DIST. NO. 1		ILLINOIS	FED. AID PROJECT	



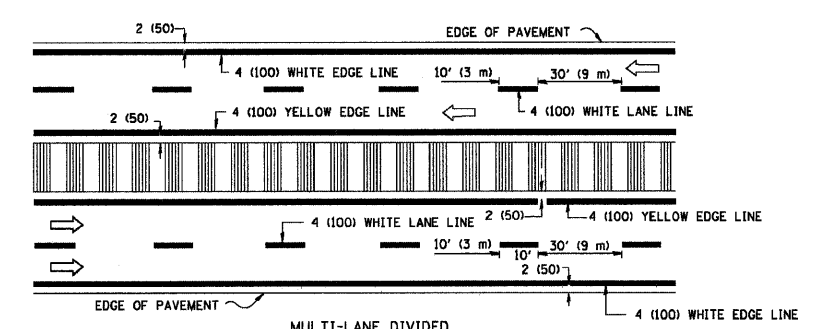
TYPICAL ISLAND MARKING



A MINIMUM OF TWO PAIRS OF TURN ARROWS SHALL BE USED, WHITE IN COLOR. ADDITIONAL PAIRS SHALL BE PLACED AT 200' (60 m) TO 300' (90 m) INTERVALS.

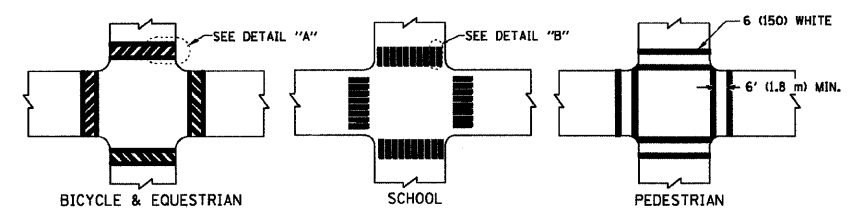


TYPICAL PAINTED MEDIAN MARKING

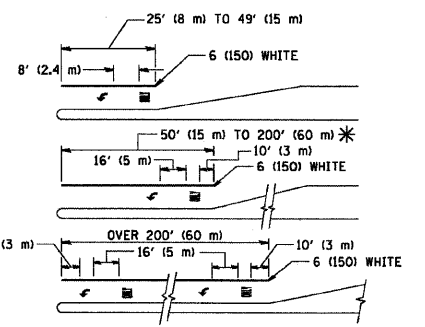


NOTE: MEDIANS WITH BARRIER CURB DO NOT REQUIRE AN EDGE LINE

TYPICAL LANE AND EDGE LINE MARKING



TYPICAL CROSSWALK MARKING



FULL SIZE LETTERS 8' (2.4 m) AND ARROWS SHALL BE USED. AREA = 15.6 SQ. FT. (1.5 m<sup>2</sup>) AREA = 20.8 SQ. FT. (1.9 m<sup>2</sup>)

\* TURN LANES IN EXCESS OF 400' (120 m) IN LENGTH MAY HAVE AN ADDITIONAL SET OF ARROW - "ONLY" INSTALLED MIDWAY BETWEEN THE OTHER TWO SETS OF ARROW - "ONLY".

TYPICAL TURN LANE MARKING

TYPE OF MARKING	WIDTH OF LINE	PATTERN	COLOR	SPACING / REMARKS
CENTERLINE ON 2 LANE PAVEMENT	4 (100)	SKIP-DASH	YELLOW	10' (3 m) LINE WITH 30' (9 m) SPACE
CENTERLINE ON MULTI-LANE UNDIVIDED PAVEMENT	2 @ 4 (100)	SOLID	YELLOW	11 (280) C-C
NO PASSING ZONE LINES: FOR ONE DIRECTION	4 (100)	SOLID	YELLOW	5/2 (140) C-C FROM SKIP-DASH CENTERLINE
NO PASSING ZONE LINES: FOR BOTH DIRECTIONS	2 @ 4 (100)	SOLID	YELLOW	OMIT SKIP-DASH CENTERLINE BETWEEN
LANE LINES	4 (100) 5 (125) ON FREEWAYS	SKIP-DASH SKIP-DASH	WHITE WHITE	10' (3 m) LINE WITH 30' (9 m) SPACE
DOTTED LINES (EXTENSIONS OF CENTER, LANE OR TURN LANE MARKINGS)	SAME AS LINE BEING EXTENDED	SKIP-DASH	SAME AS LINE BEING EXTENDED	2' (600) LINE WITH 6' (1.8 m) SPACE
EDGE LINES	4 (100)	SOLID	YELLOW-LEFT WHITE-RIGHT	OUTLINE MOUNTABLE MEDIANS IN YELLOW; EDGE LINES ARE NOT USED NEXT TO BARRIER CURB
TURN LANE MARKINGS	6 (150) LINES; FULL SIZE LETTERS & SYMBOLS (8' (2.4m))	SOLID	WHITE	SEE TYPICAL TURN LANE MARKING DETAIL
TWO WAY LEFT TURN MARKING	2 @ 4 (100) EACH DIRECTION	SKIP-DASH AND SOLID	YELLOW	10' (3 m) LINE WITH 30' (9 m) SPACE FOR SKIP-DASH 5/2 (140) C-C BETWEEN SOLID LINE AND SKIP-DASH LINE
	8' (2.4m) LEFT ARROW	IN PAIRS	WHITE	SEE TYPICAL TWO-WAY LEFT TURN MARKING DETAIL
CROSSWALK LINES (PEDESTRIAN) A. DIAGONALS (BIKE & EQUESTRIAN) B. LONGITUDINAL BARS (SCHOOL)	2 @ 6 (150) 12 (300) @ 45° 12 (300) @ 90°	SOLID SOLID SOLID	WHITE WHITE WHITE	NOT LESS THAN 6' (1.8 m) APART 2' (600) APART 2' (600) APART SEE TYPICAL CROSSWALK MARKING DETAILS.
STOP LINES	24 (600)	SOLID	WHITE	PLACE 4' (1.2 m) IN ADVANCE OF AND PARALLEL TO CROSSWALK. IF PRESENT, OTHERWISE, PLACE AT DESIRED STOPPING POINT, PARALLEL TO CROSSROAD CENTERLINE, WHERE POSSIBLE
PAINTED MEDIANS	2 @ 4 (100) WITH 12 (300) DIAGONALS @ 45°	SOLID	YELLOW; TWO WAY TRAFFIC WHITE; ONE WAY TRAFFIC	11 (280) C-C FOR THE DOUBLE LINE SEE TYPICAL PAINTED MEDIAN MARKING.
	NO DIAGONALS USED FOR 4' (1.2 m) WIDE MEDIANS			
GORE MARKING AND CHANNELIZING LINES	8 (200) WITH 12 (300) DIAGONALS @ 45°	SOLID	WHITE	DIAGONALS: 15' (4.5 m) C-C (LESS THAN 30MPH (50 km/h)) 20' (6 m) C-C 30MPH (50 km/h) TO 45MPH (70 km/h) 30' (9 m) C-C (OVER 45MPH (70 km/h))
RAILROAD CROSSING	24 (600) TRANSVERSE LINES; "RR" IS 6' (1.8 m) LETTERS; 16 (400) LINE FOR "X"	SOLID	WHITE	SEE STATE STANDARD 780001 AREA OF "R"=3.6 SQ. FT. (0.33 m <sup>2</sup> ) EACH "X"=54.0 SQ. FT. (5.0 m <sup>2</sup> )
SHOULDER DIAGONALS	12 (300) @ 45°	SOLID	WHITE - RIGHT YELLOW - LEFT	50' (15 m) C-C (LESS THAN 30MPH (50 km/h)) 75' (25 m) C-C (30 MPH (50 km/h) TO 45MPH (70 km/h)) 150' (45 m) C-C (OVER 45MPH (70 km/h))

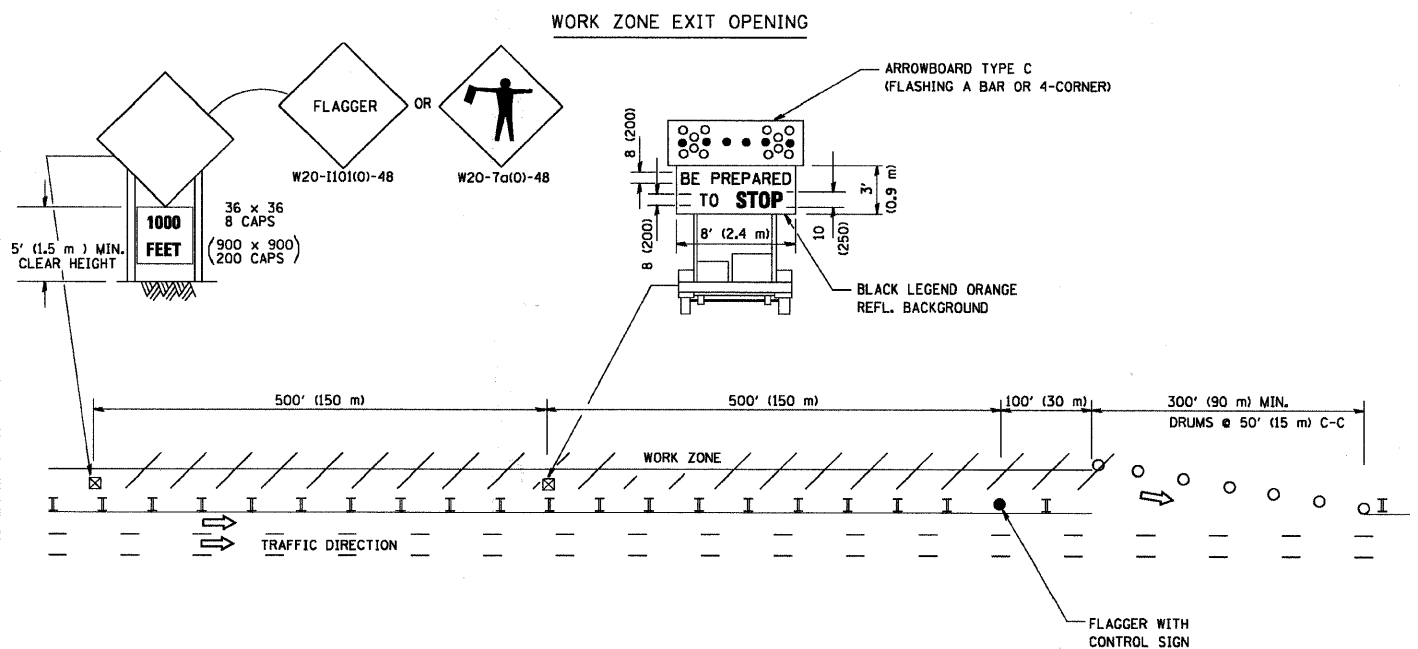
FOR FURTHER DETAILS ON PAVEMENT MARKING REFER TO STANDARD SPECIFICATIONS FOR ROAD AND BRIDGE CONSTRUCTION AND STATE STANDARD 780001.

All dimensions are in inches (millimeters) unless otherwise shown.

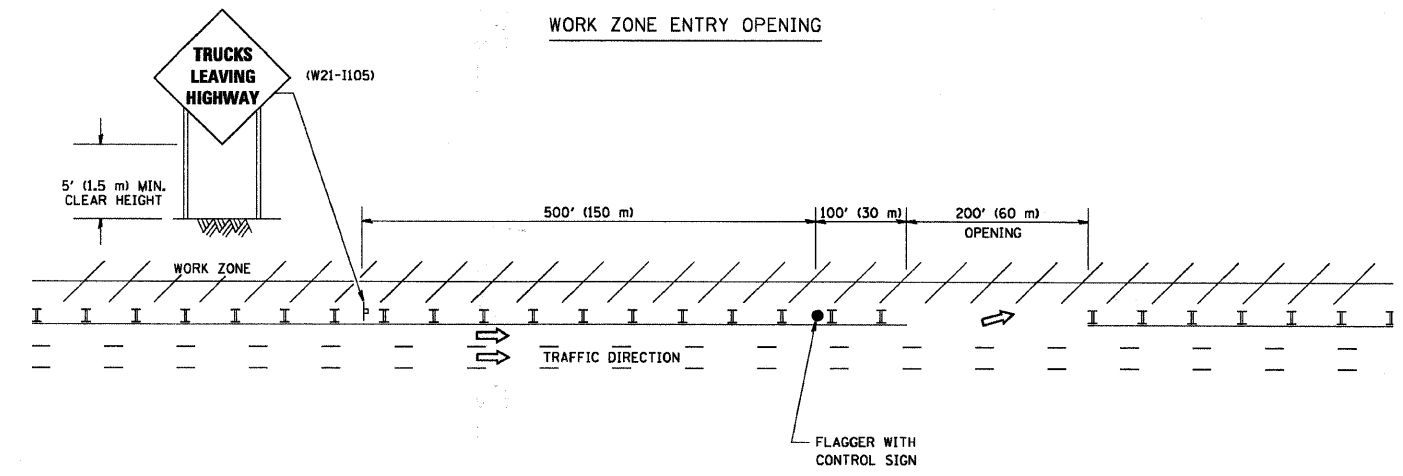
F.A.U. RTE.	SECTION	COUNTY	TOTAL SHEETS	SHEET NO.
*	09-00046-00-RS	WILL	12	11
STA.	TO STA.			
FED. ROAD DIST. NO.	ILLINOIS	FED AID PROJECT		

\*FAU 0349 WALLIN DRIVE  
CONTRACT NO. 63226

### SIGNING FOR FLAGGING OPERATIONS AT WORK ZONE OPENINGS



### WORK ZONE ENTRY OPENING



**NOTES:**

1. The Arrowboard, the Flagger Ahead trailer mounted sign, and the Trucks Leaving Highway sign shall be removed or turned away from traffic and the exit and entry openings shall be closed when the flagging operation ceases.
2. Work Zone Exit Openings should be a minimum of one half mile apart.
3. Exiting the work zone at any place other than at a Work Zone Exit Opening will be prohibited.
4. All vehicles shall enter the work zone at entry openings, using their turn signals to warn motorists

ALL DIMENSIONS ARE IN INCHES (MILLIMETERS) UNLESS OTHERWISE SHOWN

COPYRIGHT © 2008 BY BAXTER & WOODMAN, INC. ALL RIGHTS RESERVED.  
 LICENSE NO. 09-00046-00-RS EXPRESS #3202008  
 PLOT DATE: 1/4/2008  
 FILED: 1/4/2008

FILE NAME = BAXTER	USER NAME = geglianobt	DESIGNED -	REVISED - D.W.S. 08-98
W:\data\d22		DRAWN -	REVISED - J.A.F. 04-03
		CHECKED -	REVISED - J.A.F. 02-06
		DATE -	REVISED - S.P.B. 01-07

**STATE OF ILLINOIS  
DEPARTMENT OF TRANSPORTATION**

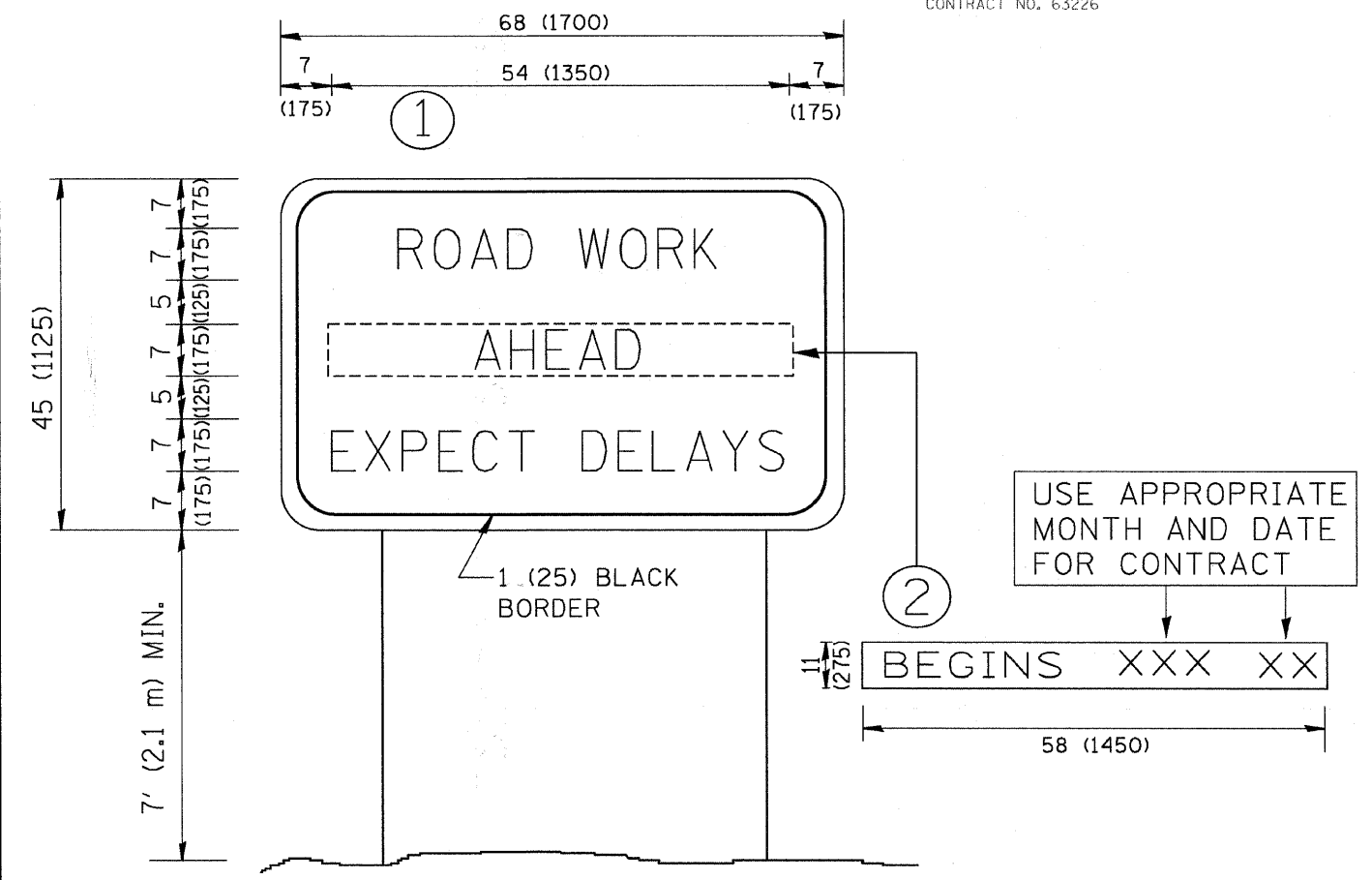
**SIGNING FOR FLAGGING OPERATIONS  
AT WORK ZONE OPENINGS**

SCALE: NONE SHEET NO. 1 OF 1 SHEETS STA. TO STA.

F.A. RTE.	SECTION	COUNTY	TOTAL SHEETS	SHEET NO.
*	09-00046-00-RS	WILL	12	11
TC-18			CONTRACT NO. 63226	
FED. ROAD DIST. NO. 1	ILLINOIS	FED. AID PROJECT		

F.A.U. RTE.	SECTION	COUNTY	TOTAL SHEETS	SHEET NO.
* 09-00046-00-RS	WILL		12	12
STA.		TO STA.		
FED. ROAD DIST. NO.	ILLINOIS	FED AID PROJECT		

\*FAU 0349 WALLIN DRIVE  
CONTRACT NO. 63226



**NOTES:**

1. USE BLACK LETTERING ON ORANGE BACKGROUND.
2. ERECT SIGNS IN ADVANCE OF THE LOCATION FOR THE "ROAD CONSTRUCTION AHEAD" SIGN AT LOCATIONS AS DIRECTED BY THE ENGINEER.
3. ERECT SIGN ① WITH INSTALLED PANEL ② ONE WEEK PRIOR TO THE START OF CONSTRUCTION.
4. REMOVE PANEL ② SOON AFTER THE START OF CONSTRUCTION.
5. SEE SPECIAL PROVISION FOR "TEMPORARY INFORMATION SIGNING" FOR ADDITIONAL INFORMATION.
6. ONE SIGN ASSEMBLY EQUALS 25.70 SQ. FT. (2.3 SQ. M.)
7. SHALL BE PAID FOR AS TEMPORARY INFORMATION SIGNING.

ALL DIMENSIONS ARE IN INCHES (MILLIMETERS)  
UNLESS OTHERWISE SHOWN.

FILE NAME = W:\distssd\22x34\to22.dgn	USER NAME = gegl1enob1	DESIGNED -	REVISED - R. MIRS 09-15-97
		DRAWN -	REVISED - R. MIRS 12-11-97
		CHECKED -	REVISED - T. RAMMACHER 02-02-99
		DATE -	REVISED - C. JUCIUS 01-31-07

**STATE OF ILLINOIS  
DEPARTMENT OF TRANSPORTATION**

<b>ARTERIAL ROAD INFORMATION SIGN</b>			
SCALE: NONE	SHEET NO. 1 OF 1 SHEETS	STA.	TO STA.

F.A. RTE.	SECTION	COUNTY	TOTAL SHEETS	SHEET NO.
* 09-00046-00-RS	WILL		12	12
<b>TC-22</b>		<b>CONTRACT NO. 63226</b>		
FED. ROAD DIST. NO. 1 ILLINOIS FED. AID PROJECT				