

FOR INDEX OF SHEETS, SEE SHEET NO. 2

FOR INDEX OF HIGHWAY STANDARDS, SEE SHEET NO. 2

PROJECT LOCATED IN THE VILLAGE OF PLAINFIELD

STATE OF ILLINOIS
 DEPARTMENT OF TRANSPORTATION
 DIVISION OF HIGHWAYS

PLANS FOR PROPOSED FEDERAL AID HIGHWAY

FAU ROUTE 0405 DRAUDEN ROAD

DRAUDEN ROAD FROM END OF SPRINGBANK CONSTRUCTION TO ALISON DRIVE RESURFACING

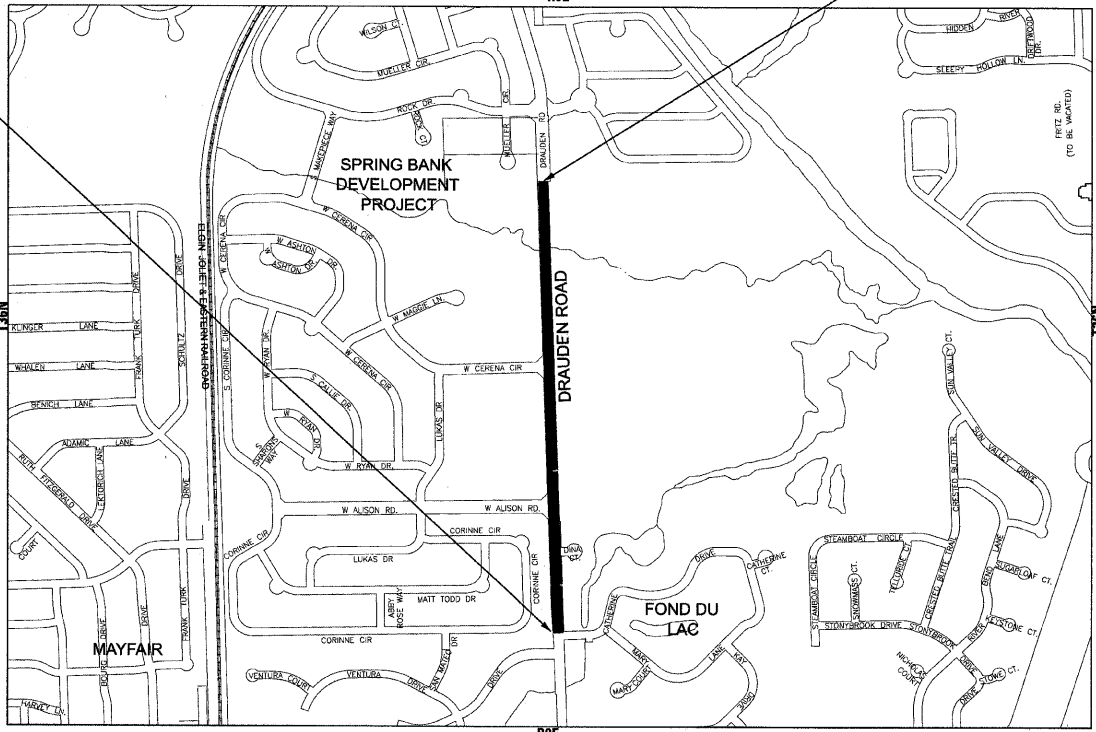
PROJECT No.: ARA-9003(383)
 SECTION No.: 09-00045-00-RS
 JOB No: C-91-724-09
 VILLAGE OF PLAINFIELD
 WILL COUNTY

TRAFFIC DATA
 DRAUDEN ROAD
 POSTED & DESIGN SPEED LIMIT = 40 MPH
 2007 ADT = 6,400

PROJECT NO.: ARA-9003(383)
 FAU 0405 DRAUDEN ROAD
 PROJECT BEGINS STA 1+00

PROJECT NO.: ARA-9003(383)
 FAU 0405 DRAUDEN ROAD
 PROJECT ENDS STA 35+00

LOCATION MAP
 (NOT TO SCALE)



PLAINFIELD TOWNSHIP
 GROSS LENGTH OF IMPROVEMENT = 3,400 LF OR 0.64 MILES
 NET LENGTH OF IMPROVEMENT = 3,400 LF OR 0.64 MILES



NATHAN J. PECK
 62-057588
 REGISTERED
 PROFESSIONAL
 ENGINEER
 OF
 ILLINOIS
 PROJECT MANAGER
 "LICENSE EXPIRES 11-30-09"

STATE OF ILLINOIS
 DEPARTMENT OF TRANSPORTATION
 DIVISION OF HIGHWAYS

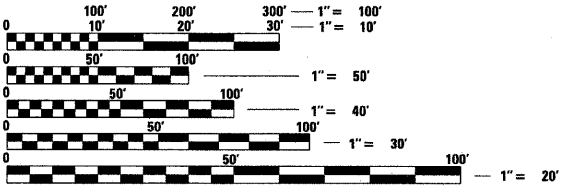
APPROVED *[Signature]*
 LOCAL AGENCY REPRESENTATIVE

PASSED *[Signature]*
 AUGUST 31, 2009
 LOCAL ROADS ENGINEER

RELEASING FOR BID
 BASED ON LIMITED
 REVIEW SEPTEMBER 1, 2009
 DEPUTY DIRECTOR OF
 HIGHWAYS, REGION 1 ENGINEER

PRINTED BY THE AUTHORITY
 OF THE STATE OF ILLINOIS

BAXTER & WOODMAN, INC.
 STATE OF ILLINOIS - PROFESSIONAL DESIGN FIRM
 LICENSE NO. - 184-001121 - EXPIRES 4/30/2011



FULL SIZE PLANS HAVE BEEN PREPARED USING STANDARD
 ENGINEERING SCALES. REDUCED SIZED PLANS WILL NOT
 CONFORM TO STANDARD SCALES. IN MAKING MEASUREMENTS
 ON REDUCED PLANS, THE ABOVE SCALES MAY BE USED.

J.U.L.I.E.
 JOINT UTILITY LOCATION INFORMATION FOR EXCAVATION
 1-800-892-0123

CONTRACT NO. 63227

Burlington, Wisconsin 262.763.7834 Crystal Lake, Illinois 815.459.1260 DeKalb, Illinois 815.787.3111 Itasca, Illinois (Mokena, Illinois) 630.773.1870 Graylake, Illinois 708.478.2090 Plainfield, Illinois 847.223.5088 Madison, Wisconsin 815.609.7425 Chicago, Illinois 608.347.1542 312.578.0050

(OFFICE WHICH PREPARED PLANS)

B&W PROJECT NO.: 090356.40 DATE: 06-29-09

COPYRIGHT © 2009 BY BAXTER & WOODMAN, INC.
 STATE OF ILLINOIS - PROFESSIONAL DESIGN FIRM
 LICENSE NO. - 184-001121 - EXPIRES 4/30/2011
 PLOTTED BY: [Name] DATE: [Date]
 FIELD ENGINEER MELCHOR MANGOBA, P.E. (847-705-4408)