

F.A.U. RTE.	SECTION	COUNTY	TOTAL SHEETS	SHEET NO.
	09-00048-00-BR	COOK	5	1
CONTRACT NO. 63238				
ILLINOIS FED. AID PROJECT				

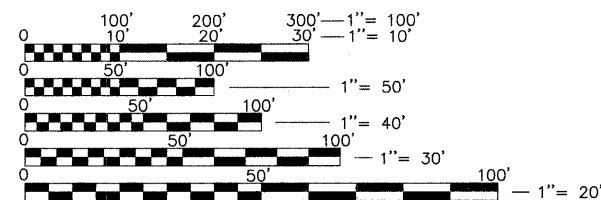
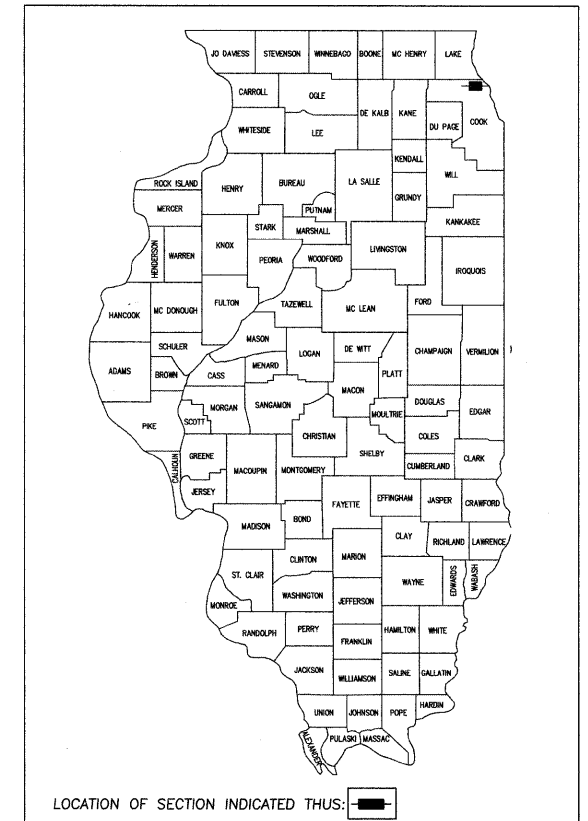
**INDEX OF SHEETS**

1. COVER SHEET, INDEX OF SHEETS, LIST OF STATE STANDARDS
2. GENERAL NOTES & SUMMARY OF QUANTITIES
3. TRAFFIC CONTROL PLAN
4. GENERAL PLAN & ELEVATIONS
5. BRIDGE NOTES & DETAILS

**STATE OF ILLINOIS  
DEPARTMENT OF TRANSPORTATION  
DIVISION OF HIGHWAYS**

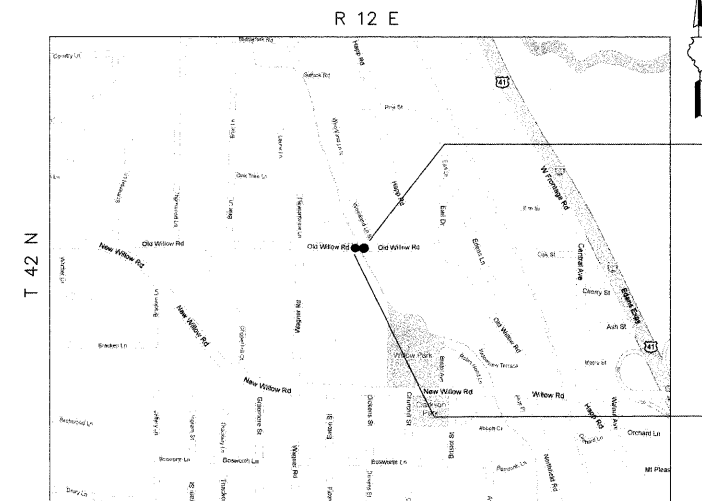
**PLANS FOR PROPOSED  
FEDERAL AID HIGHWAY**

**OLD WILLOW ROAD  
EAST OF WAGNER ROAD TO WEST OF WOODLAND LANE  
SECTION: 09-00048-00-BR  
JOB NO. C-91-588-09  
PROJECT NO. ARA-9003(307)  
VILLAGE OF NORTHFIELD  
COOK COUNTY**



FULL SIZE PLANS HAVE BEEN PREPARED USING STANDARD ENGINEERING SCALES. REDUCED SIZED PLANS WILL NOT CONFORM TO STANDARD SCALES. IN MAKING MEASUREMENTS ON REDUCED PLANS, THE BELOW SCALES MAY BE USED.

**LOCATION MAP  
(NOT TO SCALE)**



OLD WILLOW ROAD  
CONSTRUCTION ENDS  
STA. 15+40.65

EXISTING BRIDGE SN 016-7595  
STA 14+95.35 TO STA  
15+40.65 OVER MIDDLE FORK,  
NORTH BRANCH OF THE  
CHICAGO RIVER. SINGLE SPAN  
17 INCH PRECAST PRESTRESSED  
BOX BEAMS WITH INTEGRAL  
ABUTMENTS SUPPORTED ON  
PILING.

OLD WILLOW ROAD  
CONSTRUCTION BEGINS  
STA. 14+95.35

**PROJECT INFORMATION**

LENGTH OF PROJECT = 45 FT  
ADT = 2,200 VPD  
POSTED SPEED LIMIT = 30 MPH  
DESIGN SPEED LIMIT = 30 MPH  
ROAD CLASSIFICATION = LOCAL STREET

**GEWALT HAMILTON  
ASSOCIATES, INC.**

Consulting Engineers & Surveyors  
850 Forest Edge Drive  
Vernon Hills, IL 60061  
847-476-9700  
FAX: 847-476-9701

STATE OF ILLINOIS DEPARTMENT OF TRANSPORTATION DIVISION OF HIGHWAYS	
APPROVED:	June 30, 2009 <i>[Signature]</i> VILLAGE OF NORTHFIELD
PASSED:	JULY 16, 2009 <i>[Signature]</i> DISTRICT ONE ENGINEER OF LOCAL ROADS AND STREETS
RELEASING FOR BID BASED ON LIMITED REVIEW:	JULY 16, 2009 <i>[Signature]</i> DEPUTY DIRECTOR OF HIGHWAYS, REGION ONE ENGINEER

PROFESSIONAL ENGINEER'S SIGN & SEAL

*[Signature]*  
LEO X. MORAND  
EXPIRES: 11-30-09

**PRINTED BY THE AUTHORITY  
OF THE STATE OF ILLINOIS**

ASSOCIATE FIELD ENGINEER: KEVIN STALLWORTH (847) 705-4169

**J.U.L.I.E.**  
JOINT  
UTILITY  
LOCATION  
INFORMATION FOR  
EXCAVATION  
CALL 811

Know what's below.  
Call before you dig.

EXISTING UTILITIES: WHEN THE PLANS OR SPECIAL PROVISIONS INCLUDE INFORMATION PERTAINING TO THE LOCATION OF UNDERGROUND UTILITY FACILITIES, SUCH INFORMATION REPRESENTS ONLY THE OPINION OF THE ENGINEER AS TO THE LOCATION OF SUCH UTILITIES AND IS ONLY INCLUDED FOR THE CONVENIENCE OF THE BIDDER. THE ENGINEER AND OWNER ASSUME NO RESPONSIBILITY WHATEVER IN RESPECT TO THE SUFFICIENCY OR ACCURACY OF THE INFORMATION SHOWN ON THE PLANS RELATIVE TO THE LOCATION OF UNDERGROUND UTILITY FACILITIES OR THE MANNER IN WHICH THEY ARE TO BE REMOVED OR ADJUSTED. IT SHALL BE THE CONTRACTOR'S RESPONSIBILITY TO DETERMINE THE ACTUAL LOCATION OF ALL SUCH FACILITIES. HE SHALL ALSO OBTAIN FROM THE RESPECTIVE UTILITY COMPANIES, DETAILED INFORMATION RELATIVE TO THE LOCATION OF THEIR FACILITIES AND THE WORKING SCHEDULES OF THE UTILITY COMPANIES FOR REMOVING OR ADJUSTING THEM.

CONTRACTOR IS RESPONSIBLE FOR CONTACTING J.U.L.I.E. AT 1-800-892-0123 AND MUST ACQUIRE A DIG NUMBER A MINIMUM OF 72 HOURS PRIOR TO ANY WORK BEING DONE.

**CONTRACT NO. 63238**