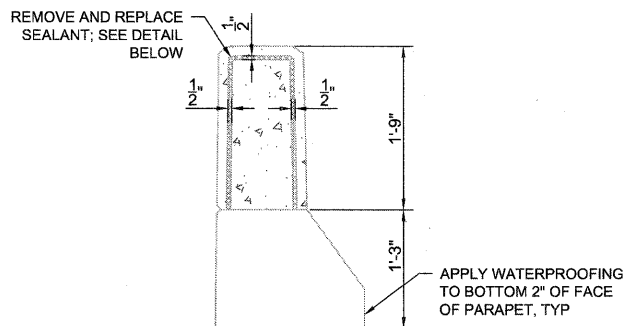
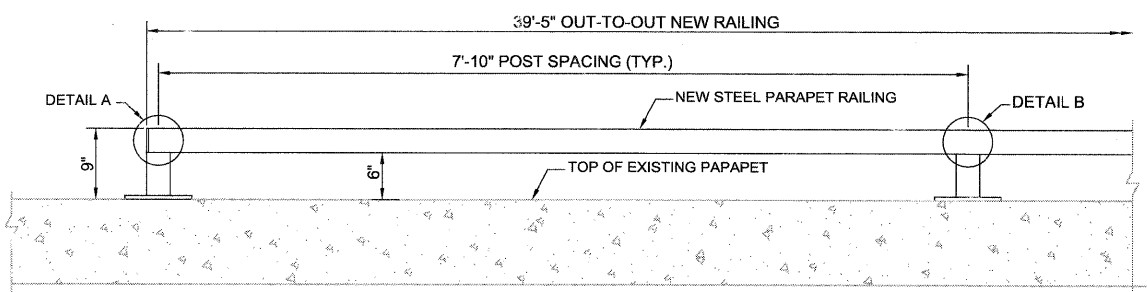


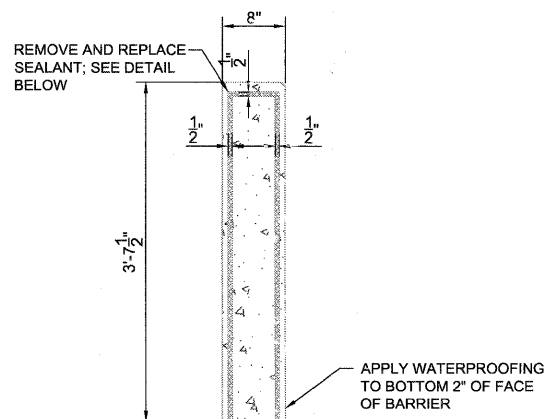
SHEAR KEY REPAIR DETAIL



TYPICAL SECTION THROUGH PARAPET AT JOINT



PARAPET RAILING ELEVATION



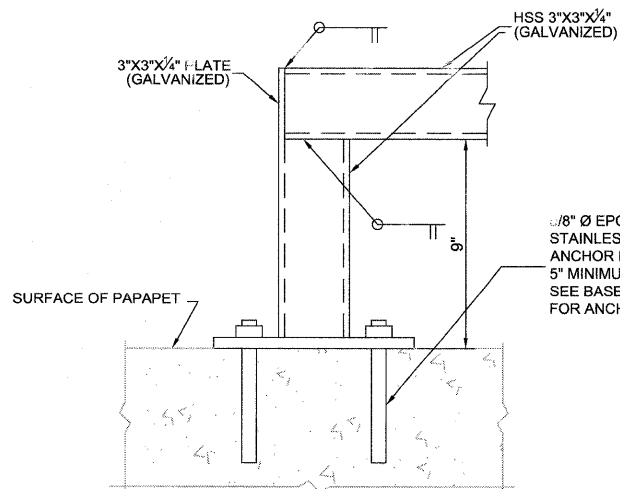
TYPICAL SECTION THROUGH BARRIER AT JOINT

GENERAL NOTES

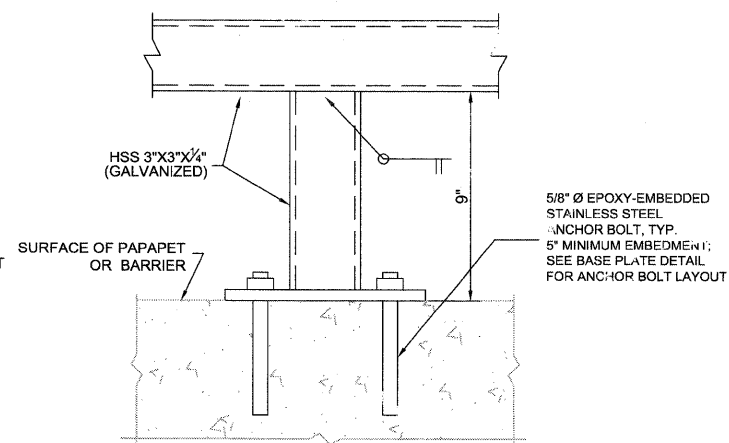
1. THE CONTRACTOR SHALL NOT SCALE DIMENSIONS FROM THE CONTRACT PLANS FOR CONSTRUCTION PURPOSES. SCALES ARE SHOWN FOR INFORMATION ONLY.
2. PLAN DIMENSIONS AND DETAILS RELATIVE TO THE EXISTING PLANS ARE SUBJECT TO ROUTINE VARIATIONS. THE CONTRACTOR SHALL FIELD VERIFY EXISTING DIMENSIONS AND DETAILS AFFECTING THE NEW CONSTRUCTION AND MAKE NECESSARY AND APPROVED ADJUSTMENTS PRIOR TO CONSTRUCTION OR ORDERING MATERIALS. SUCH VARIATIONS SHALL NOT BE THE CAUSE FOR ADDITIONAL COMPENSATION FOR A CHANGE IN SCOPE OF THE WORK. HOWEVER, THE CONTRACTOR WILL BE PAID FOR THE QUANTITY ACTUALLY FURNISHED BASED UPON THE UNIT PRICE BID FOR THE WORK.
3. THE EXISTING BRIDGE PLANS ARE AVAILABLE AND WILL BE MADE AVAILABLE TO THE CONTRACTOR UPON WRITTEN REQUEST.
4. THE TOP SURFACES OF THE EXISTING PRECAST CONCRETE DECK BEAMS SHALL BE PREPARED IN ACCORDANCE WITH WATERPROOFING MANUFACTURER RECOMMENDATIONS.
5. ANCHOR BOLTS FOR STEEL PARAPET RAILING SHALL BE INSTALLED IN ACCORDANCE WITH MANUFACTURER RECOMMENDATIONS. ANCHOR BOLTS, BASE PLATES, AND POSTS SHALL BE INCIDENTAL TO PARAPET RAILING.
6. STEEL PARAPET RAILING SHALL BE GALVANIZED IN ACCORDANCE WITH ARTICLE 509.05 OF THE STANDARD SPECIFICATIONS. GALVANIZING SHALL BE INCIDENTAL TO PARAPET RAILING.
7. REMOVAL OF EXISTING WATERPROOFING SHALL BE INCIDENTAL TO HOT-MIX ASPHALT SURFACE REMOVAL.
8. PREPARATION OF TOPS OF EXISTING PRECAST CONCRETE BEAMS SHALL BE INCIDENTAL TO WATERPROOFING MEMBRANE SYSTEM.
9. REMOVAL OF EXISTING JOINT MATERIAL, PREPARATION WORK, PRIMER, AND BACKER ROD SHALL BE INCIDENTAL TO SILICONE JOINT SEALER.
10. REMOVAL OF EXISTING GROUT, PREPARATION, AND INSTALLATION OF REPAIR MATERIAL SHALL BE INCIDENTAL TO KEYWAY REPAIR. THE EXTENT OF REMOVAL OF EXISTING GROUT SHALL BE AS DIRECTED BY THE ENGINEER.
11. FABRICATION, INSTALLATION, AND CONSTRUCTION SHALL CONFORM WITH WITH THE ILLINOIS DEPARTMENT OF TRANSPORTATION STANDARD SPECIFICATIONS FOR ROAD AND BRIDGE CONSTRUCTION, ADOPTED JANUARY 1, 2007.

| SCHEDULE OF QUANTITIES | | | | |
|-------------------------------|--|-------|--------------------|-----------------|
| PAY ITEM NO. | DESCRIPTION | UNIT | ESTIMATED QUANTITY | RECORD QUANTITY |
| 44000198 | HOT-MIX ASPHALT SURFACE REMOVAL, VARIABLE DEPTH (2" TO 5") | SQ YD | 167 | |
| Z0032700 | KEYWAY REPAIR | LF | 150* | |
| 58300100 | PORTLAND CEMENT MORTAR FAIRING COURSE | LF | 150* | |
| 58100200 | WATERPROOFING MEMBRANE SYSTEM | SQ YD | 170 | |
| 40603335 | HMA SURFACE COURSE, MIX "D", N50 | TON | 32 | |
| Z0301424 | SILICONE JOINT SEALER | LF | 33 | |
| 50901750 | PARAPET RAILING | LF | 40 | |
| 70300520 | PAVEMENT MARKING TAPE, TYPE III 4" | LF | 422 | |

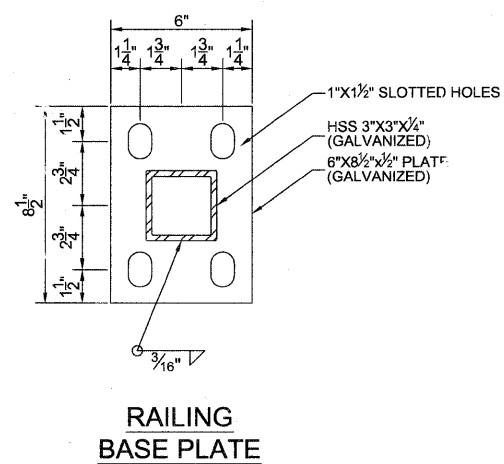
* ESTIMATED QUANTITY TO ESTABLISH UNIT PRICE



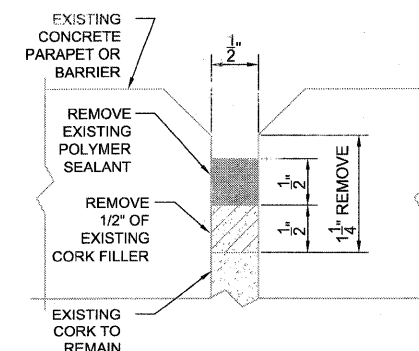
RAILING DETAIL A



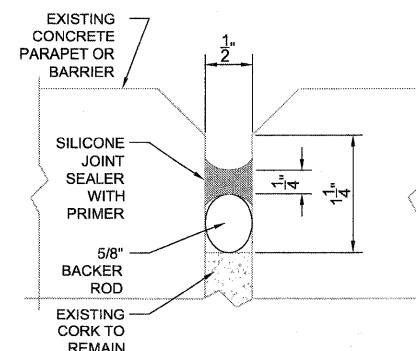
RAILING DETAIL B



RAILING BASE PLATE



EXISTING BARRIER / PARAPET JOINT DETAIL



PROPOSED BARRIER / PARAPET JOINT DETAIL

NOTE:
THERE ARE A TOTAL OF 6 JOINTS TO BE REPAIRED
(2 PER WALL)

| | | | |
|-------------|----------------------|-----------------|-----------|
| FILE NAME = | USER NAME = | DESIGNED - JEA | REVISED - |
| | | DRAWN - JM | REVISED - |
| | PLOT SCALE = N.T.S. | CHECKED - LSA | REVISED - |
| | PLOT DATE = 06/30/09 | DATE - 06/04/09 | REVISED - |

OLD WILLOW ROAD BRIDGE REPAIRS
SN 016-7595

NOTES AND DETAILS

SCALE: NONE | SHEET NO. 2 OF 2 SHEETS | STA. TO STA.

| | | | | |
|--------------------|---------------|--------|---------------------------|-----------|
| F.A.U. RTE. | SECTION | COUNTY | TOTAL SHEETS | SHEET NO. |
| XXXX | 09-0048-00-BR | COOK | 5 | 5 |
| CONTRACT NO. 63238 | | | ILLINOIS FED. AID PROJECT | |