

F.A.U. RTE.	SECTION	COUNTY	TOTAL SHEETS	SHEET NO.
	09-00048-00-BR	COOK	5	1
CONTRACT NO. 63238				
ILLINOIS FED. AID PROJECT				

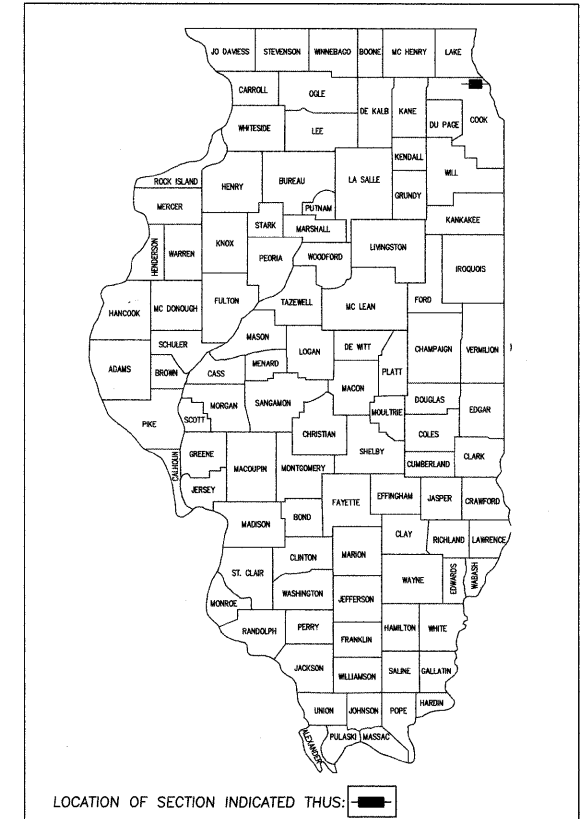
INDEX OF SHEETS

1. COVER SHEET, INDEX OF SHEETS, LIST OF STATE STANDARDS
2. GENERAL NOTES & SUMMARY OF QUANTITIES
3. TRAFFIC CONTROL PLAN
4. GENERAL PLAN & ELEVATIONS
5. BRIDGE NOTES & DETAILS

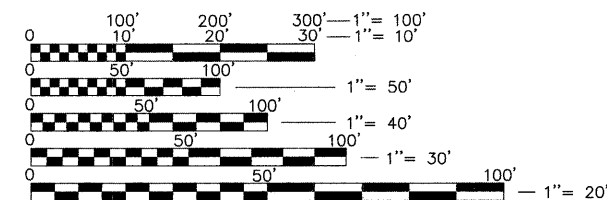
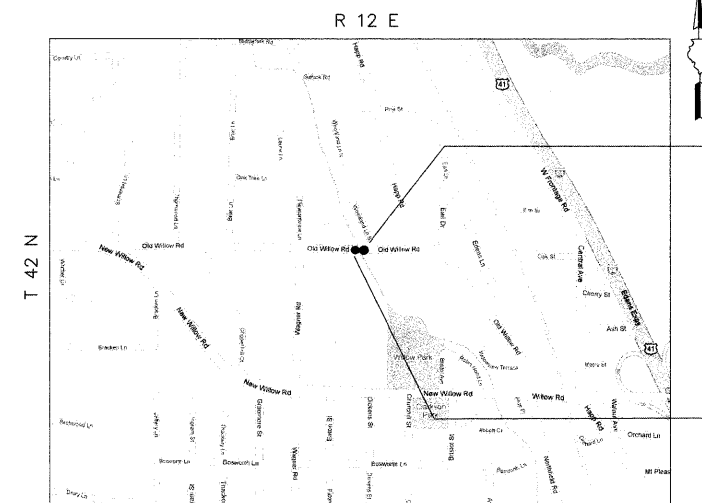
**STATE OF ILLINOIS
DEPARTMENT OF TRANSPORTATION
DIVISION OF HIGHWAYS**

**PLANS FOR PROPOSED
FEDERAL AID HIGHWAY**

**OLD WILLOW ROAD
EAST OF WAGNER ROAD TO WEST OF WOODLAND LANE
SECTION: 09-00048-00-BR
JOB NO. C-91-588-09
PROJECT NO. ARA-9003(307)
VILLAGE OF NORTHFIELD
COOK COUNTY**



LOCATION MAP
(NOT TO SCALE)



FULL SIZE PLANS HAVE BEEN PREPARED USING STANDARD ENGINEERING SCALES. REDUCED SIZED PLANS WILL NOT CONFORM TO STANDARD SCALES. IN MAKING MEASUREMENTS ON REDUCED PLANS, THE BELOW SCALES MAY BE USED.

J.U.L.I.E.
JOINT UTILITY LOCATION INFORMATION FOR EXCAVATION CALL 811



**Know what's below.
Call before you dig.**

ASSOCIATE FIELD ENGINEER: KEVIN STALLWORTH (847) 705-4169

EXISTING UTILITIES: WHEN THE PLANS OR SPECIAL PROVISIONS INCLUDE INFORMATION PERTAINING TO THE LOCATION OF UNDERGROUND UTILITY FACILITIES, SUCH INFORMATION REPRESENTS ONLY THE OPINION OF THE ENGINEER AS TO THE LOCATION OF SUCH UTILITIES AND IS ONLY INCLUDED FOR THE CONVENIENCE OF THE BIDDER. THE ENGINEER AND OWNER ASSUME NO RESPONSIBILITY WHATSOEVER IN RESPECT TO THE SUFFICIENCY OR ACCURACY OF THE INFORMATION SHOWN ON THE PLANS RELATIVE TO THE LOCATION OF UNDERGROUND UTILITY FACILITIES OR THE MANNER IN WHICH THEY ARE TO BE REMOVED OR ADJUSTED. IT SHALL BE THE CONTRACTOR'S RESPONSIBILITY TO DETERMINE THE ACTUAL LOCATION OF ALL SUCH FACILITIES. HE SHALL ALSO OBTAIN FROM THE RESPECTIVE UTILITY COMPANIES, DETAILED INFORMATION RELATIVE TO THE LOCATION OF THEIR FACILITIES AND THE WORKING SCHEDULES OF THE UTILITY COMPANIES FOR REMOVING OR ADJUSTING THEM.

CONTRACTOR IS RESPONSIBLE FOR CONTACTING J.U.L.I.E. AT 1-800-892-0123 AND MUST ACQUIRE A DIG NUMBER A MINIMUM OF 72 HOURS PRIOR TO ANY WORK BEING DONE.

CONTRACT NO. 63238

PROJECT INFORMATION
LENGTH OF PROJECT = 45 FT
ADT = 2,200 VPD
POSTED SPEED LIMIT = 30 MPH
DESIGN SPEED LIMIT = 30 MPH
ROAD CLASSIFICATION = LOCAL STREET

OLD WILLOW ROAD
CONSTRUCTION ENDS
STA. 15+40.65

EXISTING BRIDGE SN 016-7595
STA 14+95.35 TO STA
15+40.65 OVER MIDDLE FORK,
NORTH BRANCH OF THE
CHICAGO RIVER. SINGLE SPAN
17 INCH PRECAST PRESTRESSED
BOX BEAMS WITH INTEGRAL
ABUTMENTS SUPPORTED ON
PILING.

OLD WILLOW ROAD
CONSTRUCTION BEGINS
STA. 14+95.35

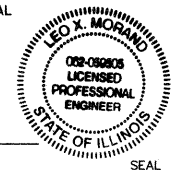
GEWALT HAMILTON
ASSOCIATES, INC.

Consulting Engineers & Surveyors
850 Forest Edge Drive
Vernon Hills, IL 60061
847-476-9700
FAX: 847-476-9701

STATE OF ILLINOIS DEPARTMENT OF TRANSPORTATION DIVISION OF HIGHWAYS	
APPROVED:	<u>June 30,</u> 2009 <i>[Signature]</i> VILLAGE OF NORTHFIELD
PASSED:	<u>JULY 16</u> 2009 <i>[Signature]</i> DISTRICT ONE ENGINEER OF LOCAL ROADS AND STREETS
RELEASING FOR BID BASED ON LIMITED REVIEW:	<u>JULY 16,</u> 2009 <i>[Signature]</i> DEPUTY DIRECTOR OF HIGHWAYS, REGION ONE ENGINEER

PROFESSIONAL ENGINEER'S SIGN & SEAL

[Signature]
LEO X. MORAND
EXPIRES: 11-30-09



**PRINTED BY THE AUTHORITY
OF THE STATE OF ILLINOIS**

GENERAL NOTES

A-1 THE ILLINOIS DEPARTMENT OF TRANSPORTATION "STANDARD SPECIFICATIONS FOR ROAD AND BRIDGE CONSTRUCTION" LATEST EDITION, THE "STANDARD SPECIFICATIONS FOR WATER AND SEWER MAIN CONSTRUCTION IN ILLINOIS" LATEST EDITION, PROJECT SPECIFICATIONS, ALL APPLICABLE REQUIREMENTS OF THE ILLINOIS ENVIRONMENTAL PROTECTION AGENCY, MUNICIPALITY, ORDINANCES OF AUTHORITIES HAVING JURISDICTION AND ALL APPENDA THERE SHALL GOVERN THIS WORK.

A-2 ALL REFERENCES TO "ENGINEER" SHALL BE INTERPRETED TO MEAN THE RESIDENT ENGINEER.

A-3 NO CONSTRUCTION PLANS SHALL BE USED FOR CONSTRUCTION UNLESS SPECIFICALLY MARKED "FOR CONSTRUCTION". PRIOR TO COMMENCEMENT OF CONSTRUCTION, THE CONTRACTOR SHALL VERIFY ALL DIMENSIONS, AND CONDITIONS AFFECTING THEIR WORK WITH THE ACTUAL CONDITIONS AT THE JOB SITE. IN ADDITION, THE CONTRACTOR MUST VERIFY THE ENGINEERS' LINE AND GRADES. IF THERE ARE ANY DISCREPANCIES FROM WHAT IS SHOWN ON THE CONSTRUCTION PLANS, STANDARD SPECIFICATIONS AND/OR SPECIAL DETAILS, THE CONTRACTOR SHALL SECURE WRITTEN INSTRUCTION FROM THE ENGINEER PRIOR TO PROCEEDING WITH ANY PART OF THE WORK AFFECTED BY OMISSION OR DISCREPANCIES. FAILING TO SECURE SUCH INSTRUCTION, THE CONTRACTOR WILL BE CONSIDERED TO HAVE PROCEEDED AT HIS OWN RISK AND EXPENSE. IN THE EVENT OF ANY DOUBT OR QUESTION ARISING WITH RESPECT TO THE TRUE MEANING OF THE CONSTRUCTION PLANS OR SPECIFICATIONS, THE DECISION OF THE ENGINEER SHALL BE FINAL AND CONCLUSIVE.

A-4 IT IS THE CONTRACTOR'S RESPONSIBILITY TO ASCERTAIN EXISTING FIELD CONDITIONS PRIOR TO BIDDING ON THE PROJECT.

A-5 EASEMENTS FOR THE EXISTING UTILITIES, BOTH PUBLIC AND PRIVATE, AND UTILITIES WITHIN PUBLIC RIGHTS-OF-WAY ARE SHOWN ON THE PLANS ACCORDING TO AVAILABLE RECORDS. THE CONTRACTOR SHALL BE RESPONSIBLE FOR DETERMINING THE EXACT LOCATION IN THE FIELD OF THESE UTILITY LINES AND THEIR PROTECTION FROM DAMAGE DUE TO CONSTRUCTION OPERATIONS. IF EXISTING UTILITY LINES OF ANY NATURE ARE ENCOUNTERED WHICH CONFLICT IN LOCATION WITH NEW CONSTRUCTION, THE CONTRACTOR SHALL NOTIFY THE ENGINEER SO THAT THE CONFLICT MAY BE RESOLVED.

A-6 SAW CUTTING OF PAVEMENTS, SIDEWALK, ETC. SHALL BE TO FULL DEPTH AND SHALL RESULT IN A CLEAN STRAIGHT EDGE ON THE PORTION REMAINING. ALL SAW CUTTING SHALL BE CONSIDERED INCLUDED IN THE COST OF THE ITEM REMOVED.

A-7 THE CONTRACTOR SHALL PROTECT AND CAREFULLY PRESERVE ALL SECTION OR SUBSECTION MONUMENTS, PROPERTY CORNERS, AND REFERENCE MARKERS UNTIL THE OWNER, HIS AGENT, OR AN AUTHORIZED SURVEYOR HAS WITNESSED OR OTHERWISE REFERENCED THEIR LOCATIONS.

A-8 OFFSET LOCATIONS GIVEN IN THE PLANS FOR STRUCTURES, EDGE OF PAVEMENT, ETC. ARE FROM THE ROADWAY CENTERLINE.

A-9 HOT-MIX ASPHALT SURFACE REMOVAL BUTT JOINTS WILL BE INSTALLED AT THE ENDS OF ALL RESURFACING (WHERE RESURFACING MEETS EXISTING PAVEMENT). IN ACCORDANCE WITH THE BUTT JOINT AND HOT-MIX ASPHALT TAPER DETAILS SHEET INCLUDED IN THE PLANS, UNLESS OTHERWISE SPECIFIED.

A-10 QUANTITIES FOR PATCHING SHALL NOT EXCEED THOSE PROVIDED IN THE SUMMARY OF QUANTITIES UNLESS APPROVED BY THE ENGINEER. THE ENGINEER WILL IDENTIFY FINAL PATCH LOCATIONS IN THE FIELD.

A-11 WHENEVER, DURING CONSTRUCTION OPERATIONS, ANY LOOSE MATERIAL IS DEPOSITED IN THE FLOW LINE OF GUTTERS, DRAINAGE STRUCTURES, DITCHES, ETC. SUCH THAT THE NATURAL FLOW LINE OF WATER IS OBSTRUCTED, THE LOOSE MATERIAL WILL BE REMOVED AT THE CLOSE OF EACH WORKING DAY. AT THE CONCLUSION OF CONSTRUCTION OPERATION, ALL DRAINAGE STRUCTURES AND FLOW LINES SHALL BE FREE FROM DIRT AND DEBRIS. THIS WORK SHALL BE CONSIDERED INCIDENTAL TO THE CONTRACT. THE CONTRACTOR'S FAILURE TO PROVIDE THE ABOVE WILL PRECLUDE ANY POSSIBLE ADDED COMPENSATION REQUESTED DUE TO DELAYS OR UNSUITABLE MATERIALS CREATED AS A RESULT THEREOF.

STORM SEWERS, WATER MAINS, AND UTILITIES

B-1 EXISTING UTILITIES: WHEN THE PLANS OR SPECIAL PROVISIONS INCLUDE INFORMATION PERTAINING TO THE LOCATION OF UNDERGROUND UTILITY FACILITIES, SUCH INFORMATION REPRESENTS ONLY THE OPINION OF THE ENGINEER AS TO THE LOCATION OF SUCH UTILITIES AND IS ONLY INCLUDED FOR THE CONVENIENCE OF THE CONTRACTOR. THE ENGINEER AND OWNER ASSUME NO RESPONSIBILITY WHATSOEVER IN RESPECT TO THE SUFFICIENCY OR ACCURACY OF THE INFORMATION SHOWN ON THE PLANS RELATIVE TO THE LOCATION OF UNDERGROUND UTILITY FACILITIES OR THE MANNER IN WHICH THEY ARE TO BE REMOVED OR ADJUSTED. IT SHALL BE THE CONTRACTOR'S RESPONSIBILITY TO DETERMINE THE ACTUAL LOCATION OF ALL SUCH FACILITIES. THIS WORK SHALL BE CONSIDERED AS INCLUDED IN THE UNIT BID PROCESS OF THE CONTRACT, AND NO ADDITIONAL COMPENSATION WILL BE ALLOWED. HE SHALL ALSO OBTAIN FROM THE RESPECTIVE UTILITY COMPANIES DETAILED INFORMATION RELATIVE TO THE LOCATION OF THEIR FACILITIES AND THE WORKING SCHEDULES OF THE UTILITY COMPANIES FOR REMOVING OR ADJUSTING THEM.

B-2 THE CONTRACTOR IS RESPONSIBLE FOR CONTACTING JULIE AS WELL AS LOCAL CABLE TV COMPANIES AND THE VILLAGE. THE FACILITIES SHALL BE LOCATED PRIOR TO ANY WORK WITHIN ANY EASEMENT, R.O.W, OR SUSPECTED UTILITY LOCATION.

B-3 THE CONTRACTOR SHALL BE RESPONSIBLE FOR THE PROTECTION OF ALL UNDERGROUND AND SURFACE UTILITIES EVEN THROUGH THEY MIGHT NOT BE SHOWN ON THE PLANS. ANY UTILITY PROPERTY DAMAGED DURING CONSTRUCTION SHALL BE REPAIRED OR REPLACED TO THE SATISFACTION OF THE OWNER AT THE CONTRACTOR'S EXPENSE.

B-4 ALL UTILITY COMPANIES SHALL BE NOTIFIED AT LEAST 3 DAYS PRIOR TO THE START OF CONSTRUCTION.

B-5 THE CONTRACTOR SHALL ENSURE THAT ALL WATER SYSTEM VALVE VAULTS, AND SANITARY SEWER MANHOLES REMAIN READILY ACCESSIBLE TO THE VILLAGE FOR EMERGENCY OPERATIONS. THE LOCATIONS OF ALL WATER AND SANITARY FACILITIES SHALL BE MARKED AND READILY VISABLE AT ALL TIMES.

SIGNING AND STRIPING

C-1 SEE IDOT STANDARD DETAIL 780001, DISTRICT ONE DETAIL TC-13, AND REFERENCE PLAN SHEETS.

TRAFFIC CONTROL

D-1 SEE TRAFFIC CONTROL HIGHWAY STANDARDS CONCERNING TRAFFIC CONTROL AND PROTECTION.

DEBRIS REMOVAL

MATERIALS RESULTING FROM THE REMOVAL OF ASPHALT SURFACES, UTILITY ADJUSTMENTS, RESTORATION WORK, ETC. SHALL BE REMOVED AT THE END OF EACH DAY TO AN APPROVED SITE. IN THE JUDGEMENT OF THE CITY, SHOULD IT BE NECESSARY TO REMOVE SUCH MATERIALS, THE CITY WILL HAVE THE MATERIAL REMOVED AND THE CONTRACTOR SHALL BE BILLED (CHARGED) ACCORDINGLY.

WATER SUPPLY

THE INDISCRIMINATE USE OF FIRE HYDRANTS, EXISTING STREAMS, CREEKS, WETLANDS OR PONDS IS STRICTLY PROHIBITED. THE CONTRACTOR SHALL PROVIDE A WATER TRUCK AND DRIVER AS REQUIRED TO OBTAIN AND TRANSPORT THIS WATER. THE CONTRACTOR SHALL BE RESPONSIBLE FOR OBTAINING WATER FROM AN APPROVED SOURCE OTHER THAN HIS YARD, WRITTEN APPROVAL FROM THE AGENCY HAVING JURISDICTION FOR THE SOURCE. IF THE WATER IS FROM A SOURCE OTHER THAN HIS YARD, WRITTEN APPROVAL FROM THE AGENCY HAVING JURISDICTION FOR THE SOURCE OF THE WATER MUST BE RECEIVED BY THE CONTRACTOR PRIOR TO USE OF THE WATER.

DRIVEWAY CLOSING

IT WILL BE THE CONTRACTOR'S RESPONSIBILITY TO NOTIFY RESIDENTS AND THE VILLAGE WHEN ACCESS TO THEIR DRIVEWAYS WILL BE TEMPORARILY CLOSED DUE TO SIDEWALK REPLACEMENT, AND/OR DRIVEWAY REPLACEMENT. AT LOCATIONS WHERE THE DRIVEWAY IS SCHEDULED TO BE REMOVED, THE CONTRACTOR SHALL CONTACT THE BUSINESS/HOMEOWNER 24 HOURS PRIOR TO REMOVING THE CURB, SIDEWALK, OR DRIVE APPROACH. EVERY EFFORT SHALL BE MADE TO ACCOMMODATE ACCESS TO THESE PROPERTIES. THE CONTRACTOR SHALL NOT BE ALLOWED TO CLOSE A DRIVEWAY FOR MORE THAN 8 HOURS UNDER ANY CIRCUMSTANCE. THE CONTRACTOR SHALL BE RESPONSIBLE FOR MAINTAINING THE BARRICADES TO PREVENT TRAFFIC FROM USING THE DRIVEWAYS DURING THIS PERIOD.

STREET SWEEPING AND PREPARATION

THE CONTRACTOR SHALL BE RESPONSIBLE FOR SWEEPING AND CLEANING STREETS OF ANY DEBRIS AND MATERIAL THAT HAS ACCUMULATED AS A RESULT OF THE CONSTRUCTION ACTIVITY. A MECHANICAL SWEEPER, MECHANICALLY DRIVEN AIR AND HANDWORK WITH SHOVEL AND BROOM SHALL BE UTILIZED TO PROVIDE A CLEAN STREET FOR THE MOTORING PUBLIC. WITHIN 24 HOURS OF PLACING PRIME COAT AND THE LAYING OF HMA, THE CONTRACTOR SHALL SWEEP THE PAVEMENT AND REMOVE STANDING WATER, EARTH, WEEDS, LEAVES, DIRT, CONSTRUCTION DEBRIS AND ALL LOOSE MATERIAL.

HIGHWAY STANDARDS:

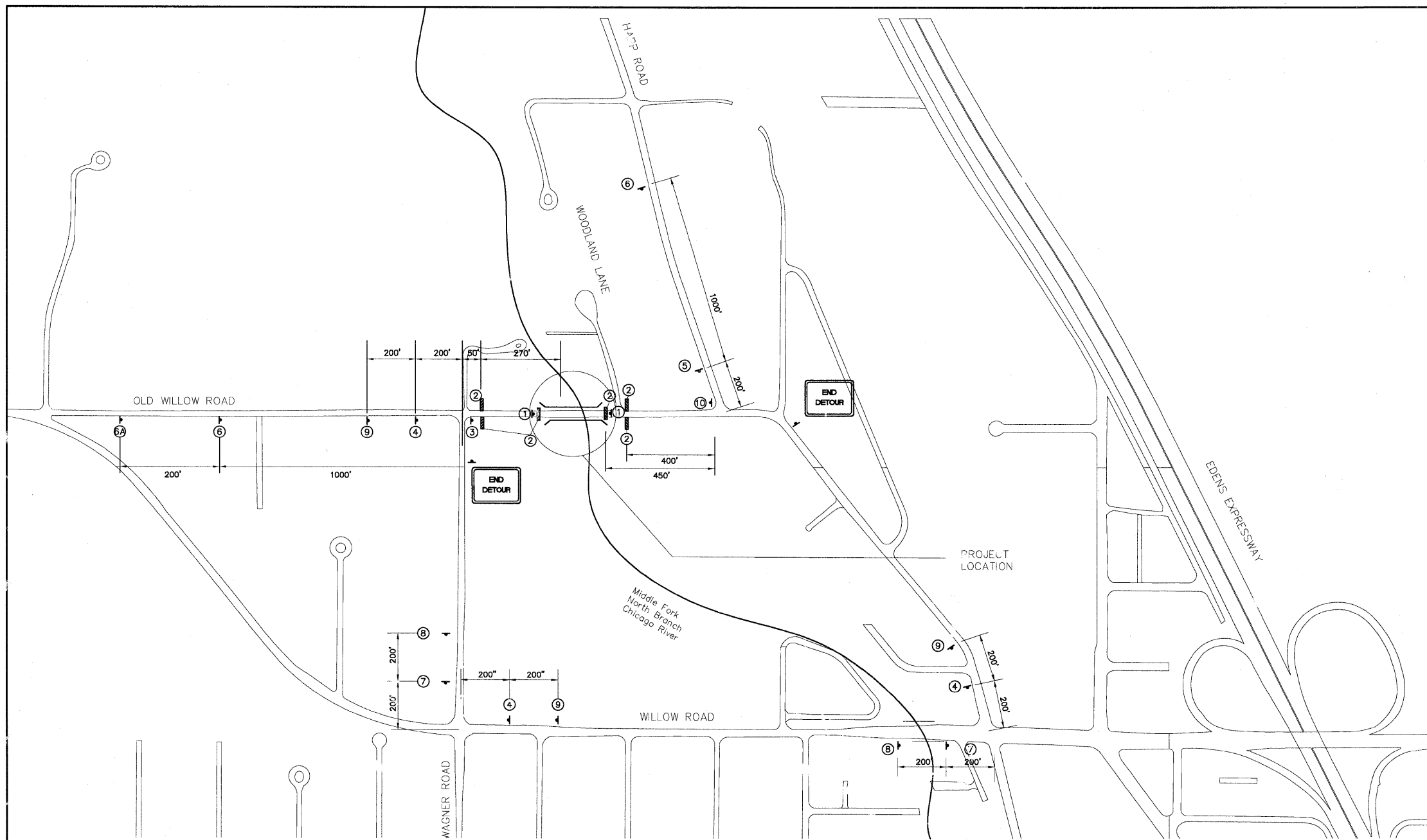
000001-05	STANDARD SYMBOLS, ABBREVIATIONS, AND PATTERNS
701301-03	LANE CLOSURE, 2L, 2W, SHORT TIME OPERATIONS
701501-05	LANE CLOSURE, 2L, 2W, UNDIVIDED
701901-01	TRAFFIC CONTROL DEVICES
780001-02	TYPICAL PAVEMENT MARKINGS

SUMMARY OF QUANTITIES

PAYCODE	DESCRIPTION	UNIT	BRIDGE	
			100% FEDERAL	X080-2A
44000198	Hot-Mix Asphalt Surface Removal, Variable Depth	SY	167.00	
40603335	HMA Surface Course, Mix "D", N50	TON	32.00	
50901750	Parapet Railing	LF	40.00	
58100200	Waterproofing Membrane System	SY	170.00	
58300100	Portland Cement Mortar Fairing Course	LF	150.00	
07100100	Mobilization	LS	1.00	
78000200	Thermoplastic Pavement Marking - Line 4"	LF	180.00	
X0301424	Silicone Joint Sealer	LF	33.00	
X701005	Traffic Control and Protection for Temporary Detour	LS	1.00	
Z0032700	Keyway Repair	LF	150.00	

* -- DENOTES SPECIALTY ITEM

FILE NAME = 3509-411_Old Willow.dwg	USER NAME =	DESIGNED - LXM DRAWN - LXM	REVISED - LXM 6/30/09	OLD WILLOW ROAD BRIDGE REPAIR	GENERAL NOTES AND SUMMARY OF QUANTITIES	F.A.U. RTE.	SECTION	COUNTY	TOTAL SHEETS	SHEET NO.
PLOT SCALE = N.T.S	CHECKED - PJG	REVISED -	09-00-48-00-BR			COOK	5	2		
PLOT DATE = 6/30/09	DATE - 6/5/09	REVISED -	CONTRACT NO. 63238							
SCALE: NONE						SHEET NO. 2 OF 5 SHEETS		STA. TO STA.		ILLINOIS FED. AID PROJECT



- ① BRIDGE CLOSED R 11-2 48" X 30"
- ② STD. 2298 TYPE III BARRICADE
- ③ BRIDGE CLOSED 300 FT AHEAD LOCAL TRAFFIC ONLY R 11-3 60" X 30"
DETOUR W 1-7 48" X 24"
- ④ DETOUR 21" X 15"
OLD WILLOW RD.
- ⑤ DETOUR 21" X 15"
OLD WILLOW RD.
- ⑥ DETOUR AHEAD W 20-2 48" X 48"
- ⑥A BRIDGE CLOSED 1500 FT AHEAD LOCAL TRAFFIC ONLY R 11-3 60" X 30"
- ⑦ DETOUR 30" X 24"
OLD WILLOW RD.
- ⑧ DETOUR M 4-9L 30" X 24"
OLD WILLOW RD.
- ⑨ DETOUR M 4-9L 30" X 24"
OLD WILLOW RD.
- ⑩ BRIDGE CLOSED 400 FT AHEAD LOCAL TRAFFIC ONLY R 11-3 60" X 30"
DETOUR M 4-10L 48" X 18"

TRAFFIC CONTROL NOTES

1. TRAFFIC CONTROL SHALL BE PERFORMED IN ACCORDANCE WITH THE STANDARD SPECIFICATIONS FOR ROAD AND BRIDGE CONSTRUCTION, SECTION 900; APPLICABLE GUIDELINES IN THE FEDERAL MANUAL ON UNIFORM TRAFFIC CONTROL DEVICES FOR STREETS AND HIGHWAYS; AND THE APPLICABLE HIGHWAY STANDARDS FOR TRAFFIC CONTROL, UNLESS HEREIN REVISED.

2. THE TYPE III BARRICADES ARE TO BE PLACED IN ACCORDANCE WITH STANDARD 2298 UNLESS AUTHORIZED BY THE ENGINEER TO USE AN ALTERNATE ARRANGEMENT

3. EXISTING TRAFFIC CONTROL SIGNS AND DEVICES IN CONFLICT WITH TEMPORARY SIGNS WILL BE RELOCATED OR COVERED BY THE CONTRACTOR. AFTER THE TRAFFIC CONTROL REQUIREMENTS ARE MET OR AS AUTHORIZED BY THE ENGINEER RELOCATED SIGNS SHALL BE REINSTALLED AND COVERS REMOVED AS REQUIRED. ANY SIGNS OR DEVICES LEFT IN PLACE ARE TO BE PROTECTED FROM DAMAGE AND MAINTAINED BY THE CONTRACTOR.

4. TYPE I OR TYPE II BARRICADES WITH MONODIRECTIONAL STEADY-BURN LIGHTS SHALL BE REQUIRED ALONG TEMPORARY ROADS AND SIDE STREETS TO DELINEATE THE TRAVELED WAY WITHIN THE CONSTRUCTION ZONE. THE MAXIMUM SPACING FOR THESE BARRICADES SHALL BE 100' CENTER TO CENTER. ANY DROP OFF GREATER THAN THREE INCHES BUT LESS THAN SIX INCHES, WITHIN EIGHT FEET OF THE PAVEMENT EDGE, SHALL BE PROTECTED BY TYPE I OR TYPE II BARRICADES EQUIPPED WITH MONODIRECTIONAL STEADY-BURN LIGHTS AT 100-FOOT CENTER TO CENTER SPACING. IF THE DROP OFF WITHIN EIGHT FEET OF THE PAVEMENT EDGE EXCEEDS SIX INCHES, THE BARRICADES MENTIONED ABOVE SHALL BE PLACED AT 50-FOOT CENTER TO CENTER SPACING. BARRICADES THAT MUST BE PLACED IN EXCAVATED AREAS SHALL HAVE LEG EXTENSIONS INSTALLED SUCH THAT THE TOP OF THE BARRICADES IS IN COMPLIANCE WITH THE HEIGHT REQUIREMENTS OF STANDARD 2298.

5. TYPE I OR TYPE II BARRICADES WITH TWO WAY FLASHING LIGHTS SHALL BE REQUIRED AT ALL OPEN TRENCHES, EXCAVATIONS, OPEN OR EXPOSED SEWER STRUCTURES, TRANSVERSE PAVEMENT JOINTS, MATERIALS, OR EQUIPMENT WITHIN THE RIGHT OF WAY (NUMBER AND SPACING DEPENDS ON THE CONDITIONS); AND AT LOCATIONS DESIGNATED BY THE ENGINEER OR LOCAL LAW ENFORCEMENT AGENCIES.

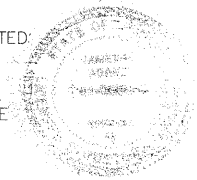
6. THE COST OF SUPPLYING, ERECTING, AND MAINTAINING BARRICADES, WARNING LIGHTS, AND SIGNS WILL BE INCLUDED IN THE CONTRACT LUMP SUM PRICE FOR TRAFFIC CONTROL COMPLETE.

7. THE CONTRACTOR SHALL PROVIDE ACCESS WITHIN THE RIGHT OF WAY FOR EMERGENCY VEHICLES ENTERING CONSTRUCTION AREAS AT ALL TIMES.

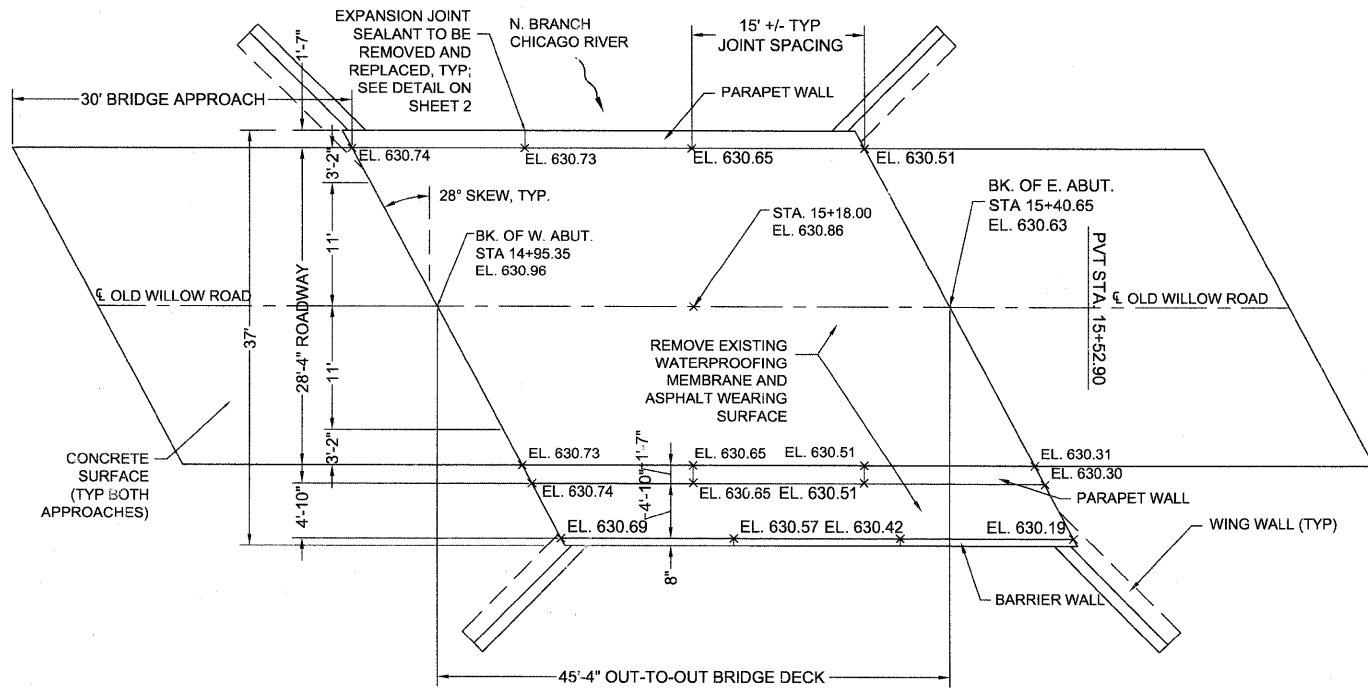
8. ACCESS SHALL BE MAINTAINED TO ALL DRIVES AND ENTRANCES WITH TEMPORARY STONE, UNLESS OTHERWISE NOTED.

9. PEDESTRIAN ACCESS SHALL BE MAINTAINED AT ALL TIMES AND SEPARATED FROM CONSTRUCTION AREAS BY TEMPORARY FENCE.

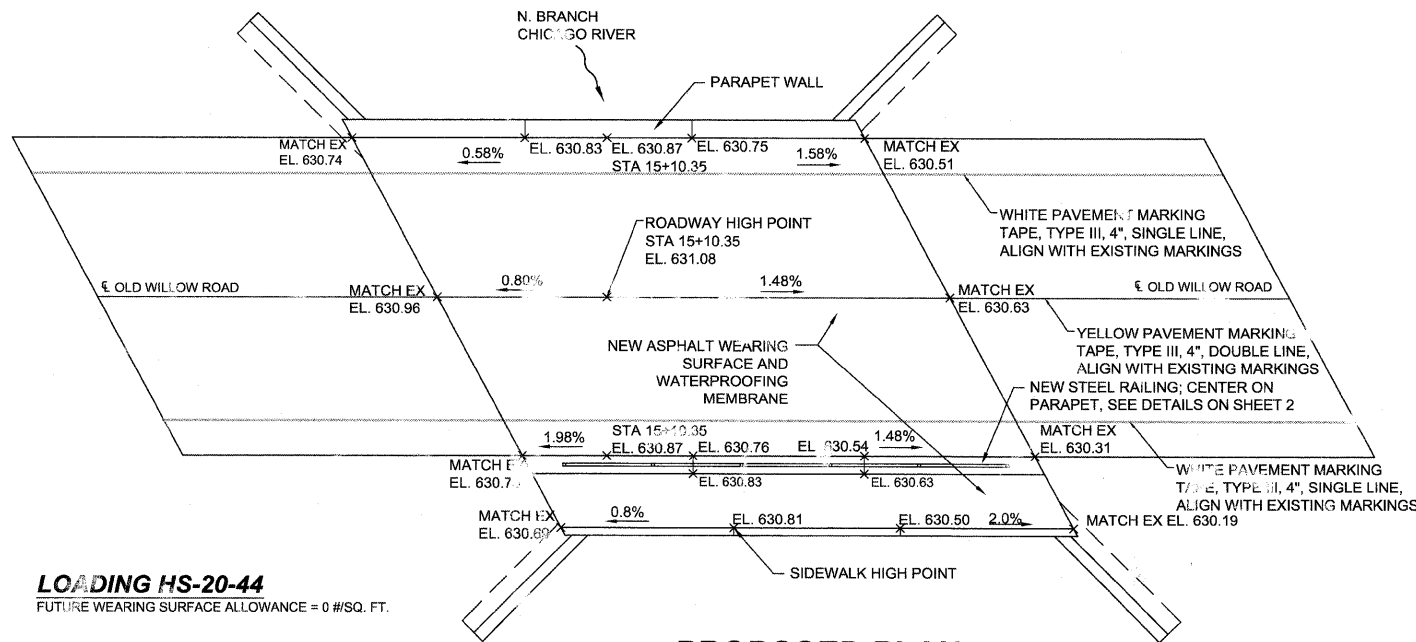
10. THE AVERAGE DAILY TRAFFIC THROUGH THE AREA POSTED FOR LOCAL ACCESS ONLY IS EXPECTED TO BE LESS THAN 100 VEHICLES. FLAGMEN ARE THEREFORE NOT REQUIRED UNLESS DIRECTED BY THE ENGINEER.



FILE NAME = 3509-411_Old Willow.dwg	USER NAME =	DESIGNED - LXM DRAWN - LXM	REVISED - LXM 6/30/09	OLD WILLOW ROAD BRIDGE REPAIR	TRAFFIC CONTROL		F.A.J. RTE.	SECTION	COUNTY	TOTAL SHEETS	SHEET NO.
	PLOT SCALE = N.T.S	CHECKED - PJG	REVISED -		SCALE: NONE	SHEET NO. 3 OF 5 SHEETS	STA.	09-00048-00-BR	COOK	5	3
	PLOT DATE = 6/30/09	DATE - 6/5/09	REVISED -				TO STA.				

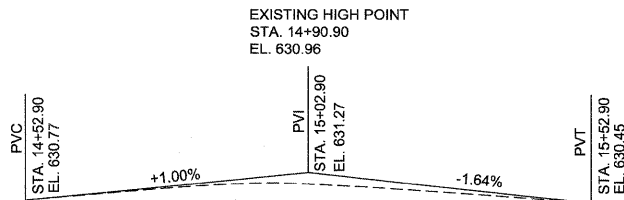


EXISTING PLAN



PROPOSED PLAN

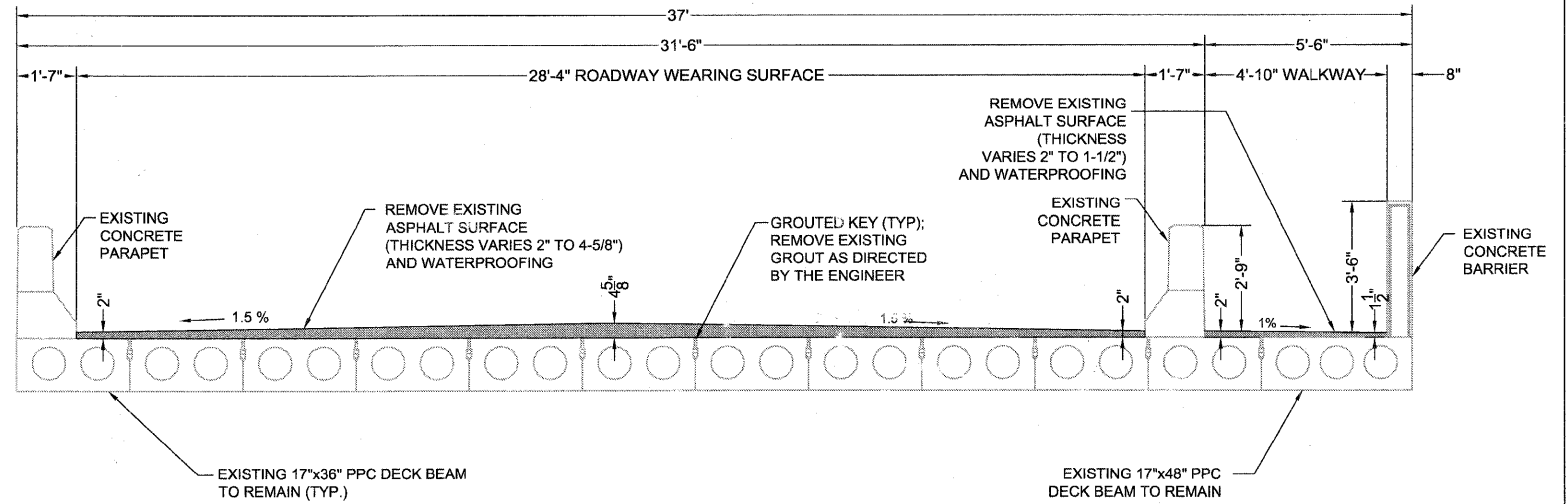
LOADING HS-20-44
FUTURE WEARING SURFACE ALLOWANCE = 0 #/SQ. FT.



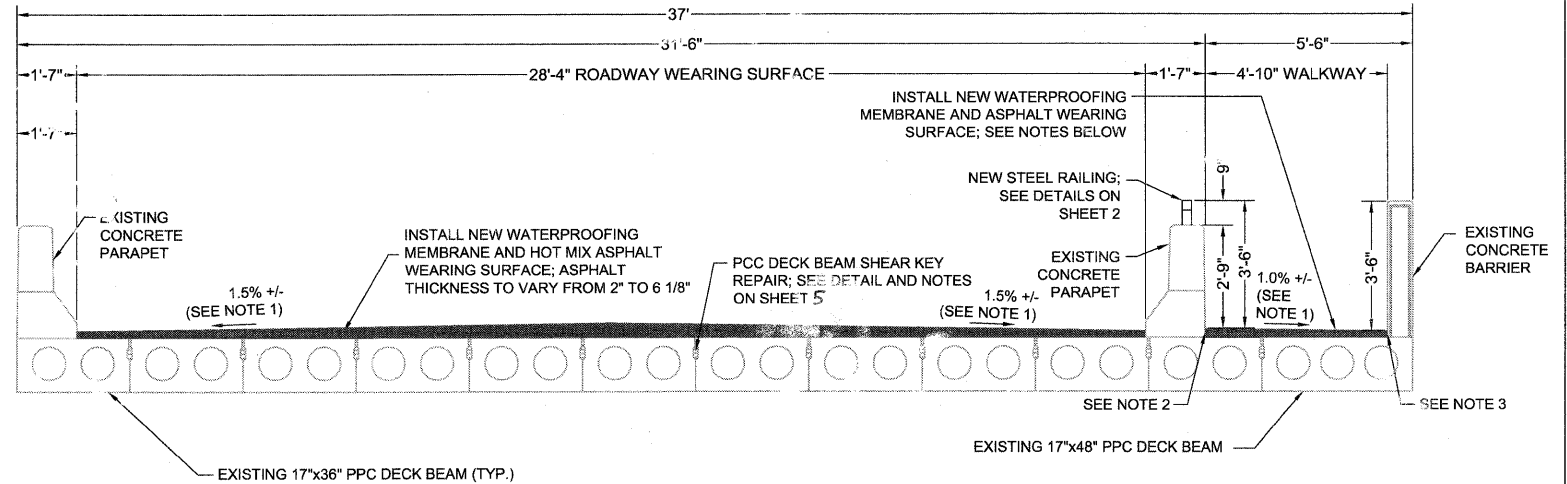
EXISTING PROFILE GRADE

WATERWAY INFORMATION									
DRAINAGE AREA = 24.2 SQ. MI LOW GRADE ELEV. 628.3 @ STA. 11+00									
FLOOD	FREQ YR	O.C.F.S.	OPENING SQ. FT.		NAT H.W.F.	HEAD FT.		HEADWATER EL.	
			EXIST	PROP		EXIST	PROP	EXIST	PROP
DESIGN	30	912	168.1	221.8	627.7	1	0	628	627.7
BASE	100	1109	168.1	221.8	627.7	1.1	0.1	628.4	627.8
OVERTOPPING									
MAX CALC.	500								

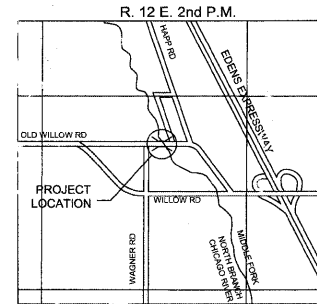
OLD WILLOW ROAD BRIDGE REPAIRS
SN 016-7595



EXISTING CROSS SECTION



PROPOSED CROSS SECTION



LOCATION SKETCH

NOTES:

1. TYPICAL CROSS SLOPE SHALL VARY NEAR CONCRETE APPROACHES IN ORDER TO MATCH GRADE
2. ASPHALT WALKWAY SHALL VARY IN THICKNESS FROM 2" - 4" ADJACENT TO PARAPET WALL
3. ASPHALT WALKWAY SHALL VARY IN THICKNESS FROM 1 1/2" - 3 1/2" ADJACENT TO BARRIER WALL
4. CONTRACTOR TO MAINTAIN POSITIVE DRAINAGE IN ORDER TO PREVENT PONDING ON THE BRIDGE DECK

HOT MIX ASPHALT REQUIREMENTS

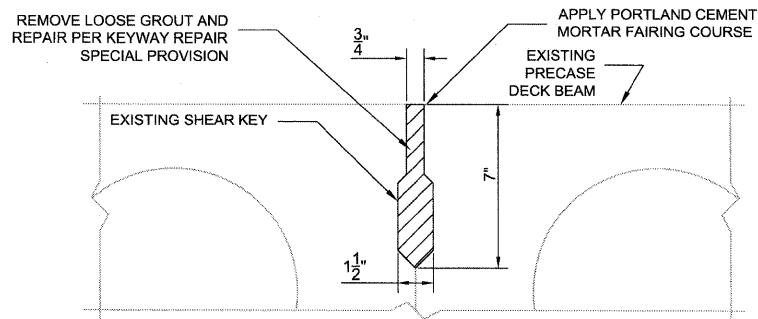
MIXTURE TYPE	AC TYPE	AIR VOIDS	MAX RAP%
HOT MIX ASPHALT SURFACE COURSE, MIX "C", N50, 1.5"	PG 64-22	4% @ 50 GYR	15%
HOT MIX ASPHALT SURFACE COURSE, MIX "D", N50, 2.0"	PG 64-22	4% @ 50 GYR	15%
LEVELING BINDER (MACHINE METHOD), N50	PG 64-22*	4% @ 50 GYR	25%

THE UNIT WEIGHT TO CALCULATE ALL HMA SURFACE MIXTURE QUALITIES IS 112 LBS/SQ.IN
*WHEN RAP EXCEEDS 20%, THE NEW ASPHALT BINDER IN THE MIX SHALL BE PG 58-22

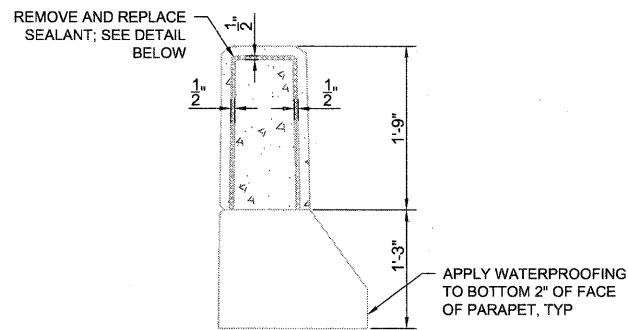


James E. Adams
LICENSED STRUCTURAL ENGINEER
(ILLINOIS STRUCTURAL ENGINEER'S SEAL)
EXPIRATION DATE 11/30/10

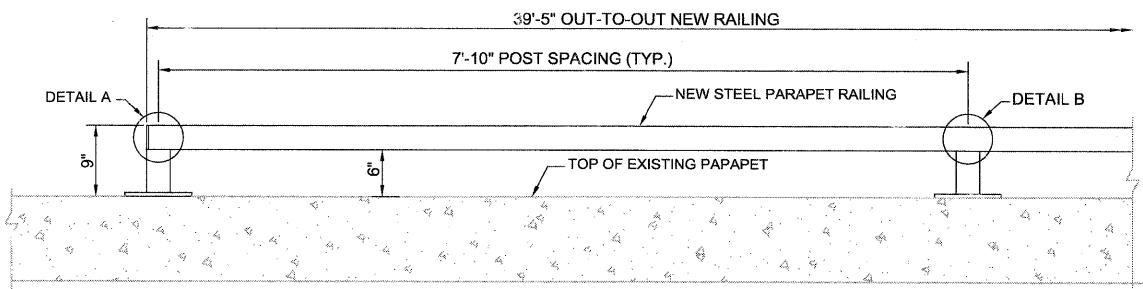
FILE NAME =	USER NAME =	DESIGNED - JEA	REVISED -	OLD WILLOW ROAD BRIDGE REPAIRS SN 016-7595	GENERAL PLAN	F.A.U. R.T.E.	SECTION	COUNTY	TOTAL SHEETS	SHEET NO.	
		DRAWN - JM	REVISED -			XXXX	09-00048-00-BR	COOK	5	4	
		PLOT SCALE = N.T.S.	REVISED -			CONTRACT NO. 63238					
		PLOT DATE = 06/30/09	REVISED -			ILLINOIS FED. AID PROJECT					
SCALE: NONE		SHEET NO. 1 OF 2 SHEETS		STA. TO STA.							



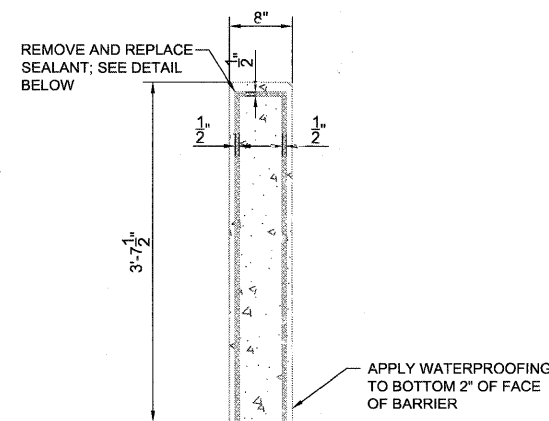
SHEAR KEY REPAIR DETAIL



TYPICAL SECTION THROUGH PARAPET AT JOINT



PARAPET RAILING ELEVATION



TYPICAL SECTION THROUGH BARRIER AT JOINT

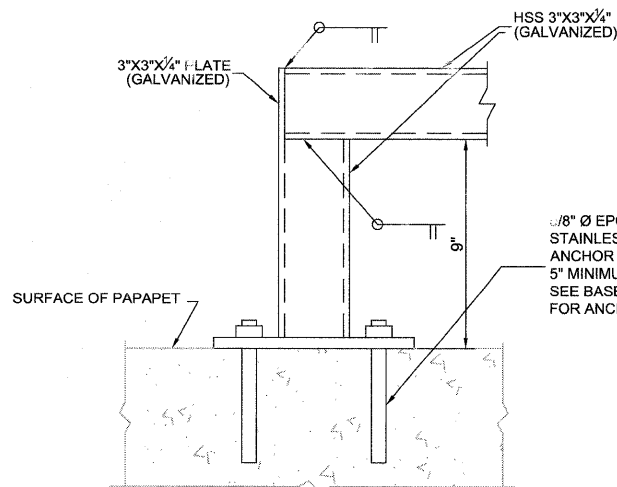
GENERAL NOTES

1. THE CONTRACTOR SHALL NOT SCALE DIMENSIONS FROM THE CONTRACT PLANS FOR CONSTRUCTION PURPOSES. SCALES ARE SHOWN FOR INFORMATION ONLY.
2. PLAN DIMENSIONS AND DETAILS RELATIVE TO THE EXISTING PLANS ARE SUBJECT TO ROUTINE VARIATIONS. THE CONTRACTOR SHALL FIELD VERIFY EXISTING DIMENSIONS AND DETAILS AFFECTING THE NEW CONSTRUCTION AND MAKE NECESSARY AND APPROVED ADJUSTMENTS PRIOR TO CONSTRUCTION OR ORDERING MATERIALS. SUCH VARIATIONS SHALL NOT BE THE CAUSE FOR ADDITIONAL COMPENSATION FOR A CHANGE IN SCOPE OF THE WORK. HOWEVER, THE CONTRACTOR WILL BE PAID FOR THE QUANTITY ACTUALLY FURNISHED BASED UPON THE UNIT PRICE BID FOR THE WORK.
3. THE EXISTING BRIDGE PLANS ARE AVAILABLE AND WILL BE MADE AVAILABLE TO THE CONTRACTOR UPON WRITTEN REQUEST.
4. THE TOP SURFACES OF THE EXISTING PRECAST CONCRETE DECK BEAMS SHALL BE PREPARED IN ACCORDANCE WITH WATERPROOFING MANUFACTURER RECOMMENDATIONS.
5. ANCHOR BOLTS FOR STEEL PARAPET RAILING SHALL BE INSTALLED IN ACCORDANCE WITH MANUFACTURER RECOMMENDATIONS. ANCHOR BOLTS, BASE PLATES, AND POSTS SHALL BE INCIDENTAL TO PARAPET RAILING.
6. STEEL PARAPET RAILING SHALL BE GALVANIZED IN ACCORDANCE WITH ARTICLE 509.05 OF THE STANDARD SPECIFICATIONS. GALVANIZING SHALL BE INCIDENTAL TO PARAPET RAILING.
7. REMOVAL OF EXISTING WATERPROOFING SHALL BE INCIDENTAL TO HOT-MIX ASPHALT SURFACE REMOVAL.
8. PREPARATION OF TOPS OF EXISTING PRECAST CONCRETE BEAMS SHALL BE INCIDENTAL TO WATERPROOFING MEMBRANE SYSTEM.
9. REMOVAL OF EXISTING JOINT MATERIAL, PREPARATION WORK, PRIMER, AND BACKER ROD SHALL BE INCIDENTAL TO SILICONE JOINT SEALER.
10. REMOVAL OF EXISTING GROUT, PREPARATION, AND INSTALLATION OF REPAIR MATERIAL SHALL BE INCIDENTAL TO KEYWAY REPAIR. THE EXTENT OF REMOVAL OF EXISTING GROUT SHALL BE AS DIRECTED BY THE ENGINEER.
11. FABRICATION, INSTALLATION, AND CONSTRUCTION SHALL CONFORM WITH WITH THE ILLINOIS DEPARTMENT OF TRANSPORTATION STANDARD SPECIFICATIONS FOR ROAD AND BRIDGE CONSTRUCTION, ADOPTED JANUARY 1, 2007.

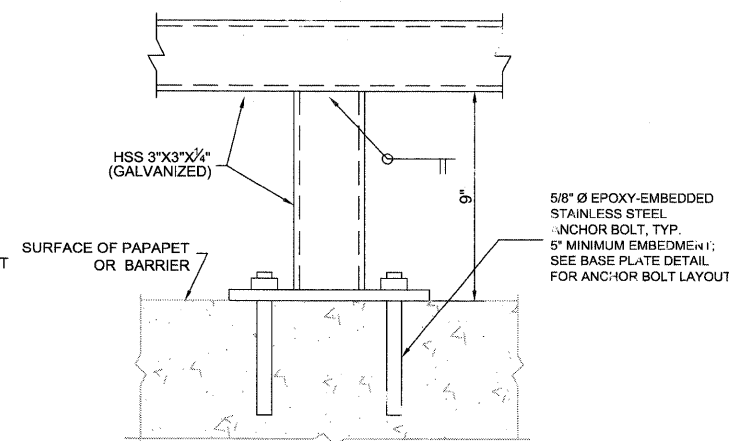
SCHEDULE OF QUANTITIES

PAY ITEM NO.	DESCRIPTION	UNIT	ESTIMATED QUANTITY	RECORD QUANTITY
44000198	HOT-MIX ASPHALT SURFACE REMOVAL, VARIABLE DEPTH (2" TO 5")	SQ YD	167	
Z0032700	KEYWAY REPAIR	LF	150*	
58300100	PORTLAND CEMENT MORTAR FAIRING COURSE	LF	150*	
58100200	WATERPROOFING MEMBRANE SYSTEM	SQ YD	170	
40603335	HMA SURFACE COURSE, MIX "D", N50	TON	32	
Z0301424	SILICONE JOINT SEALER	LF	33	
50901750	PARAPET RAILING	LF	40	
70300520	PAVEMENT MARKING TAPE, TYPE III 4"	LF	422	

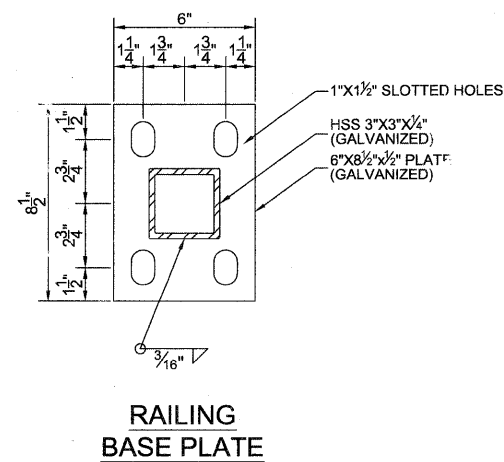
* ESTIMATED QUANTITY TO ESTABLISH UNIT PRICE



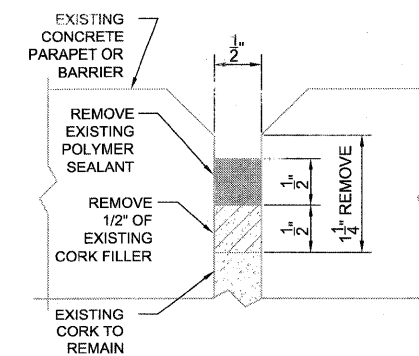
RAILING DETAIL A



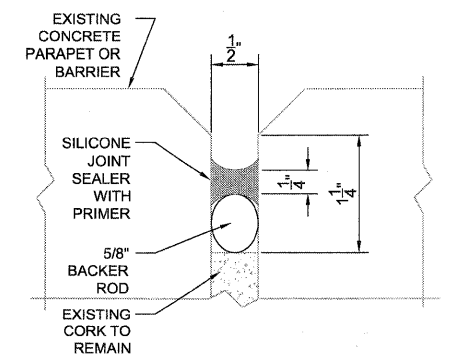
RAILING DETAIL B



RAILING BASE PLATE



EXISTING BARRIER / PARAPET JOINT DETAIL



PROPOSED BARRIER / PARAPET JOINT DETAIL

NOTE:
THERE ARE A TOTAL OF 6 JOINTS TO BE REPAIRED
(2 PER WALL)

FILE NAME =	USER NAME =	DESIGNED - JEA	REVISED -
		DRAWN - JM	REVISED -
	PLOT SCALE = N.T.S.	CHECKED - LSA	REVISED -
	PLOT DATE = 06/30/09	DATE - 06/04/09	REVISED -

OLD WILLOW ROAD BRIDGE REPAIRS
SN 016-7595

NOTES AND DETAILS

SCALE: NONE | SHEET NO. 2 OF 2 SHEETS | STA. TO STA.

F.A.U. RTE.	SECTION	COUNTY	TOTAL SHEETS	SHEET NO.
XXXX	09-0048-00-BR	COOK	5	5
CONTRACT NO. 63238			ILLINOIS FED. AID PROJECT	