



# Illinois Department of Transportation

2300 South Dirksen Parkway / Springfield, Illinois / 62764

October 29, 2009

SUBJECT: FAU Route 4084  
(East Wonder Lake Road)  
Project ARA-9003(356)  
Section 09-00006-00-RS (Wonder Lake)  
McHenry County  
Contract No 63242  
Item 104 A  
November 6, 2009 Letting

TO PROSPECTIVE BIDDERS:

To clarify information it is necessary to revise the following:

**Proposal- Revised pages 1 & 2 of the Schedule of Prices. Revised page 1 of the Special Provisions.**

**Plans- Revised sheets 1, 3-5, and 8**

Prime contractors must utilize the enclosed material when preparing their bid and must include any Schedule of Prices changes in their bidding proposal. Bidders using computer-generated bids are cautioned to reflect any and all Schedule of Prices changes, if involved, into their computer programs.

Since the proposal sheets are printed back to back, bidders are cautioned to exercise care when inserting revised and/or added special provisions into their proposals.

Please call 217-782-7806 if any of the above-described material is not included in this transmittal.

Very truly yours,

Charles J. Ingersoll  
Engineer of Design and Environment

A handwritten signature in cursive script, appearing to read 'Ted B. Walschleger P.E.'.

By: Ted B. Walschleger, P. E.  
Engineer of Project Management

COUNTY NAME	CODE	DIST	SECTION NUMBER	PROJECT NUMBER	ROUTE
MCHEMRY	111	01	09-00006-00-RS (WONDER LAKE)	ARA-9003/356/000	FAU 4084

ITEM NUMBER	PAY ITEM DESCRIPTION	UNIT OF MEASURE	QUANTITY	UNIT PRICE		TOTAL PRICE	
				DOLLARS	CENTS	DOLLARS	CTS
XX006806	HMA DRIVEWAY PAVEMENT	SQ YD	35.000 X				
XX007365	HMA SUR REM DR BUT JT	SQ YD	680.000 X				
X4420450	CL D PATCH T1 4	SQ YD	50.000 X				
X4420452	CL D PATCH T2 4	SQ YD	145.000 X				
X4420454	CL D PATCH T3 4	SQ YD	50.000 X				
X4420456	CL D PATCH T4 4	SQ YD	50.000 X				
40600100	BIT MATLS PR CT	GALLON	125.000 X				
40600300	AGG PR CT	TON	49.000 X				
40600625	LEV BIND MM N50	TON	1,009.000 X				
40600982	HMA SURF REM BUTT JT	SQ YD	1,830.000 X				
40603335	HMA SC "D" N50	TON	2,354.000 X				
44000198	HMA SURF REM VAR DP	SQ YD	435.000 X				
44000200	DRIVE PAVEMENT REM	SQ YD	35.000 X				
44001700	COMB C C&G REM & REPL	FOOT	45.000 X				
48101200	AGGREGATE SHLDS B	TON	638.000 X				

revised 10-29-09

ITEM NUMBER	PAY ITEM DESCRIPTION	UNIT OF MEASURE	QUANTITY	UNIT PRICE		TOTAL PRICE	
				DOLLARS	CENTS	DOLLARS	CTS
67100100	MOBILIZATION	L SUM	1.000 X			=	
70101800	TRAF CONT & PROT SPL	L SUM	1.000 X			=	
70300100	SHORT-TERM PAVT MKING	FOOT	575.000 X			=	
70301000	WORK ZONE PAVT MK REM	SQ FT	195.000 X			=	
78000200	THPL PVT MK LINE 4	FOOT	17,445.000 X			=	
78100100	RAISED REFL PAVT MKR	EACH	17.000 X			=	
78300200	RAISED REF PVT MK REM	EACH	25.000 X			=	
				TOTAL	\$		

- NOTE:
1. EACH PAY ITEM SHOULD HAVE A UNIT PRICE AND A TOTAL PRICE.
  2. THE UNIT PRICE SHALL GOVERN IF NO TOTAL PRICE IS SHOWN OR IF THERE IS A DISCREPANCY BETWEEN THE PRODUCT OF THE UNIT PRICE MULTIPLIED BY THE QUANTITY.
  3. IF A UNIT PRICE IS OMITTED, THE TOTAL PRICE WILL BE DIVIDED BY THE QUANTITY IN ORDER TO ESTABLISH A UNIT PRICE.
  4. A BID MAY BE DECLARED UNACCEPTABLE IF NEITHER A UNIT PRICE NOR A TOTAL PRICE IS SHOWN.

Revised 10-29-09

Village of Wonder Lake  
East Wonder Lake Road (FAU 4084)  
Section No.: 09-00006-00-RS  
Contract No.: 63242

**STATE OF ILLINOIS**

**SPECIAL PROVISIONS**

The following Special Provisions supplement the Illinois Department of Transportation's (IDOT) "Standard Specifications for Road and Bridge Construction," adopted January 1, 2007, (hereinafter referred to as the "Standard Specifications"); the "Manual on Uniform Traffic Control Devices for Streets and Highways" the "Manual of Test Procedures of Materials", in effect on the date of invitation for bids; the "Supplemental Specifications and Recurring Special Provisions," latest edition as indicated on the Check Sheet included herein, and Standard Specifications for Water and Sewer Main Construction in Illinois latest edition which apply to and govern the resurfacing of East Wonder Lake Road, Section 09-00006-00-RS, ARA-9003(356), Village of Wonder Lake, McHenry County. In case of conflict with any part or parts of the Standard Specifications, these Special Provisions shall take precedence and shall govern.

**LOCATION OF PROJECT**

Improvements are located on East Wonder Lake Road (FAU 4084) between McCullom Lake Road and Barnard Mill Road for a gross length of 6,328 feet (1.198 miles) in length in McHenry County, Illinois.

**DESCRIPTION OF PROJECT**

This work will include, but not be limited to hot-mix asphalt surface course, leveling binder, class D patches, thermoplastic pavement markings, and all incidental and collateral work necessary to complete the project and described herein.

PROJECT NO.  
ARA-9003(356)  
JOB NO.  
C-91-671-09

- INDEX OF SHEETS**
- 1 COVER SHEET
  - 2 GENERAL NOTES AND LIST OF STATE HIGHWAY STANDARDS
  - 3 SUMMARY OF QUANTITIES
  - 4-5 TYPICAL SECTIONS
  - 6-16 PROPOSED PLANS
  - 17-21 DISTRICT 1 DETAILS
  - 22-41 HIGHWAY STANDARDS

**PROJECT LOCATED IN THE VILLAGE OF WONDER LAKE**

**TRAFFIC DATA**

ADT: E. WONDER LAKE ROAD 5,500 VPD (2005)

**DESIGN SPEED**

40 MPH (EXISTING) 40 MPH (PROPOSED)  
40 MPH (PROPOSED)

**DESIGN DESIGNATION**

FAU 4084 (E. WONDER LAKE ROAD) - URBAN COLLECTOR

**811**  
JULIE JOINT LOCATION INFORMATION FOR EXCAVATION CALL 811

Know what's below. Call before you dig.



**SEC Group, Inc.**  
Illinois Professional Design Firm # 164-000106  
Engineering  
Surveying  
Planning  
Landscape Architecture  
McHenry • Yorkville • New Lenox • Chicago  
www.secgroupinc.com

**PROJECT ENGINEER: J. ATTANASEO**  
**PROJECT MANAGER: A. CHAUDHRY**

**CONTRACT NO. 63242**

**STATE OF ILLINOIS**  
**DEPARTMENT OF TRANSPORTATION**  
**DIVISION OF HIGHWAYS**

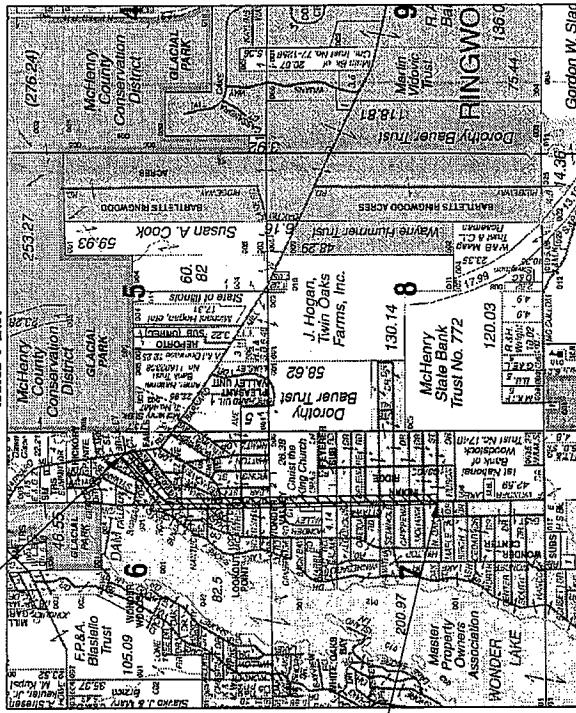
**PLANS FOR PROPOSED FEDERAL AID HIGHWAY**  
**FAU ROUTE 4084 (EAST WONDER LAKE ROAD) FROM MCCULLOM LAKE TO BARNARD MILL LOCAL AGENCY PAVEMENT PRESERVATION (LAPP)**

**SECTION 09-00006-00-RS**  
**PROJECT ARA-9003(356)**  
**MCHENRY COUNTY**  
**C-91-671-09**

**PROJECT LOCATION MAP**

N.T.S.

RANGE 8 EAST

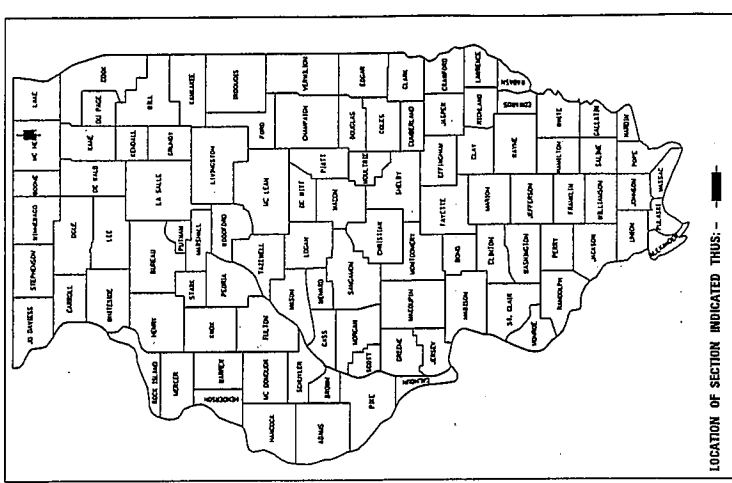


**PROJECT LENGTH**

NET LENGTH OF IMPROVEMENT (E. WONDER LAKE RD.) = 6,327.86 FT (1.198 MI)

GROSS LENGTH OF PROJECT = 6,327.86 FT (1.198 MI)

SECTION	COUNTY	TOTAL SHEETS
09-00006-00-RS	MCHENRY	41
ILLINOIS	CONTRACT NO. 63242	



STATE OF ILLINOIS  
DEPARTMENT OF TRANSPORTATION  
DIVISION OF HIGHWAYS

APPROVED *[Signature]* AUG 17 2009  
VILLAGE OF WONDER LAKE

PASSED *[Signature]* SEPT 11 2009  
DISTRICT/AREA ENGINEER OF LOCAL ROADS AND STREETS

RELEASED FOR BID AND BASED ON LIMITED REVIEW *[Signature]* SEPT 14 2009  
DEPUTY DIRECTOR OF HIGHWAYS, REGION ONE ENGINEER

PROFESSIONAL ENGINEER'S SIGN & SEAL  
*[Signature]*  
JOSEPH P. ATTANASEO, P.E.  
EXPIRES: 11-30-09

SEAL  
P. ATTANASEO  
ILLINOIS PROFESSIONAL ENGINEER  
EXPIRES: 11-30-09

**PRINTED BY THE AUTHORITY OF THE STATE OF ILLINOIS**

revised 10-29-09

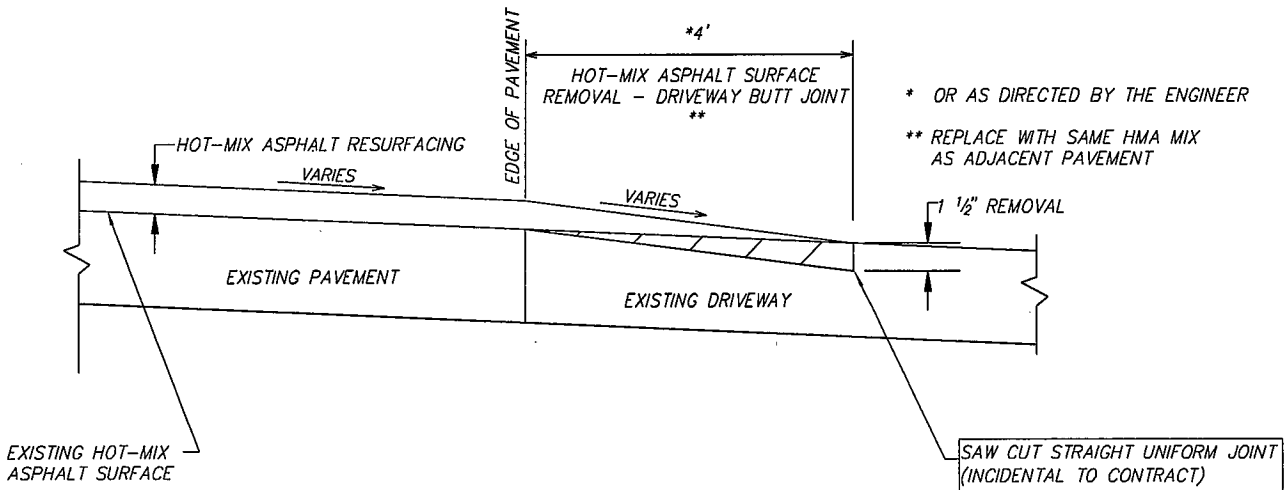
COMPANY NAME: SEC GROUP, INC. PROJECT CONTACT: A. CHAUDHRY CLIENT: VILLAGE OF WONDER LAKE PLOT DRIVER: pdf-gf-ayacolo-rs-er.pdf PEN TABLE: stand-d-trans.tbl 10/26/2009 2:45:16 PM 09022-cv-r.dgn

ASSOCIATE FIELD ENGINEER: KEVIN STALLWORTH (847) 705-4158 PROJECT NO. ARA-9003(356) JOB NO. C-91-671-09

**SUMMARY OF QUANTITIES**

PAY ITEM NUMBER	PAY ITEM DESCRIPTION	UNITS	TOTAL QUANTITY	ROADWAY 1000-2A
40600100	BITUMINOUS MATERIALS (PRIME COAT)	GALLON	125	125
40600300	AGGREGATE (PRIME COAT)	TON	49	49
40600825	LEVELING BINDER (MACHINE METHOD), N50	TON	1,009	1,009
40600982	HOT-MIX ASPHALT SURFACE REMOVAL - BUTT JOINT	SQ YD	1,830	1,830
40603335	HOT-MIX ASPHALT SURFACE COURSE, MIX "D", N50	TON	2,354	2,354
44000198	HOT-MIX ASPHALT SURFACE REMOVAL, VARIABLE DEPTH	SQ YD	435	435
44000200	DRIVEWAY PAVEMENT REMOVAL	SQ YD	35	35
44001700	COMBINATION CONCRETE CURB AND GUTTER REMOVAL AND REPLACEMENT	FOOT	45	45
48101200	AGGREGATE SHOULDERS, TYPE B	TON	638	638
67100100	MOBILIZATION	L SUM	1	1
70101800	TRAFFIC CONTROL AND PROTECTION, (SPECIAL)	L SUM	1	1
70300100	SHORT-TERM PAVEMENT MARKING	FOOT	575	575
70301000	WORK ZONE PAVEMENT MARKING REMOVAL	SQ FT	195	195
78000200	THERMOPLASTIC PAVEMENT MARKING-LINE 4"	FOOT	17,445	17,445
78100100	RAISED REFLECTIVE PAVEMENT MARKER	EACH	17	17
78300200	RAISED REFLECTIVE PAVEMENT MARKER REMOVAL	EACH	25	25
X4420450	CLASS D PATCHES, TYPE I, 4 INCH	SQ YD	50	50
X4420452	CLASS D PATCHES, TYPE II, 4 INCH	SQ YD	145	145
X4420454	CLASS D PATCHES, TYPE III, 4 INCH	SQ YD	50	50
X4420458	CLASS D PATCHES, TYPE IV, 4 INCH	SQ YD	50	50
XX006808	HOT-MIX ASPHALT DRIVEWAY PAVEMENT	SQ YD	35	35
XX007365	HOT-MIX ASPHALT SURFACE REMOVAL-DRIVEWAY BUTT JOINT	SQ YD	680	680

\* SPECIALTY ITEM



**HOT-MIX ASPHALT SURFACE REMOVAL-DRIVEWAY BUTT JOINT DETAIL**

REVISIONS	DATE	BY
1	08/24/09	JPA
2	10/26/09	JPA
3		
4		
5		
6		
7		
8		
9		
10		

Illinois Professional Design Firm # 184-000108

**SEC Group, Inc.**

- Engineering • Surveying • Planning
- Landscape Architecture

420 North Front Street,  
 McHenry, IL 60050-5507  
 t. 815.385.1778 f. 815.385.1781  
 www.secgroupinc.com

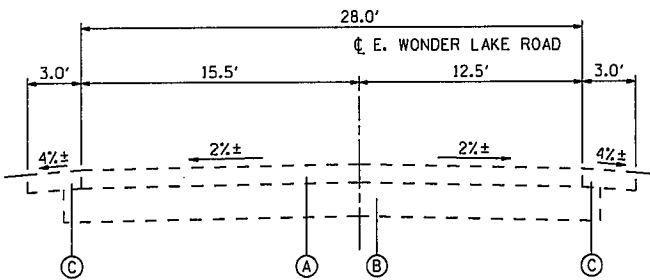
•McHenry,IL •Yorkville,IL •New Lenox,IL •Chicago,IL

**SUMMARY OF QUANTITIES**  
**WONDER LAKE ROAD**  
**RESURFACING**

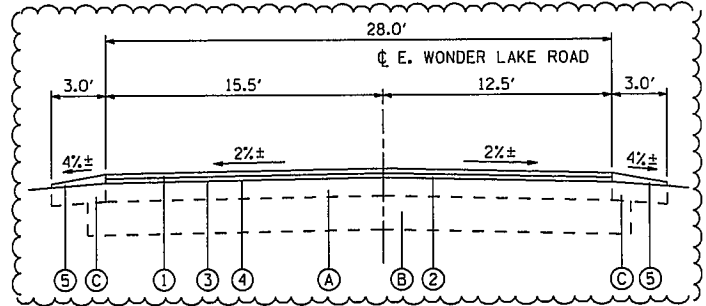
SHEET ORIENTATION

DATE: 10/26/09		
HORIZ. SCALE: N.T.S.		
DWN. BY: JPA	DSN. BY: JPA	CHK. BY: TH
PROJECT NO. 09-00006-00-RS		
SHEET NO. <b>3</b>		

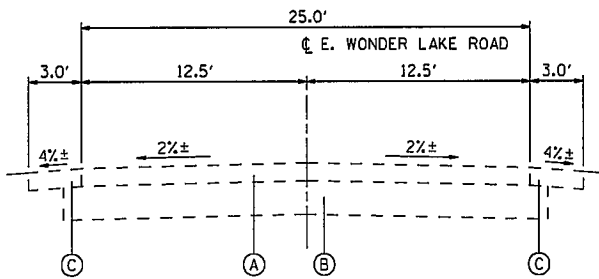
Revised 10-29-09



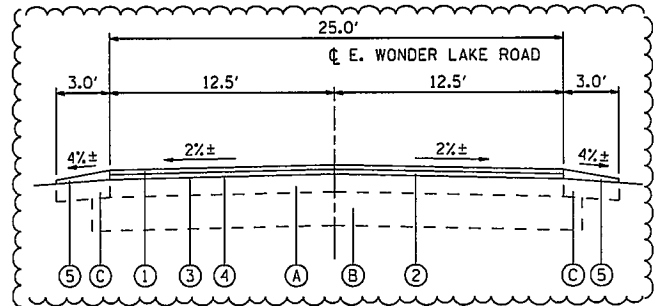
EXISTING E. WONDER LAKE ROAD  
 STA. 320+93.33 TO STA. 340+11.00  
 STA. 380+97.00 TO STA. 384+21.19



PROPOSED E. WONDER LAKE ROAD  
 STA. 320+93.33 TO STA. 340+11.00  
 STA. 380+97.00 TO STA. 384+21.19



EXISTING E. WONDER LAKE ROAD  
 STA. 340+11.00 TO STA. 374+86.00



PROPOSED E. WONDER LAKE ROAD  
 STA. 340+11.00 TO STA. 374+86.00

**EXISTING LEGEND**

- (A) EXISTING HOT-MIX ASPHALT PAVEMENT (TO BE OVERLAYED)
- (B) EXISTING AGGREGATE BASE COURSE
- (C) EXISTING AGGREGATE SHOULDERS
- (D) EXISTING CONCRETE CURB
- (E) HOT-MIX ASPHALT SURFACE REMOVAL, VARIABLE DEPTH

NOTE:  
 CONTRACTOR SHALL MILL BEFORE PATCHING.

**PROPOSED LEGEND**

- (1) HOT-MIX ASPHALT SURFACE COURSE, MIX "D", N50; 1 3/4"
- (2) LEVELING BINDER (MACHINE METHOD), N50; 3/4"
- (3) BITUMINOUS MATERIALS (PRIME COAT)
- (4) AGGREGATE (PRIME COAT)
- (5) AGGREGATE SHOULDERS, TYPE B (TAPERING IN THICKNESS FROM 2 1/2" TO 1")
- (6) COMBINATION CONCRETE CURB AND GUTTER REMOVAL AND REPLACEMENT (AS DIRECTED BY THE RESIDENT ENGINEER)

**HOT-MIX ASPHALT MIXTURE REQUIREMENTS**

MIXTURE TYPE	AIR VOIDS
PAVEMENT RESURFACING	
HMA SURFACE COURSE, MIX "D", N50 (IL-9.5mm)	4% @ 50 GYR.
LEVELING BINDER (MACHINE METHOD), N50 (IL-9.5mm)	4% @ 50 GYR.
DRIVEWAYS	
HMA SURFACE COURSE, MIX "C", N50; 2" (IL-9.5mm)	4% @ 50 GYR.
PATCHING	
CLASS D PATCHES (HMA BINDER IL-19mm)	4% @ 70 GYR.

"THE UNIT WEIGHT" TO CALCULATE ALL HMA SURFACE MIXTURE QUANTITIES IS 112 LBS/SQ YD/IN FOR "AC TYPE" AND "PERCENT RAP" SEE DISTRICT ONE SPECIAL PROVISIONS.

SHEET 1 OF 2

NO.	DATE	BY
1		
2	10/26/09	JPA
3		
4		
5		
6		
7		
8		
9		
10		

Illinois Professional Design Firm # 184-000108

**SEC Group, Inc.**

- Engineering • Surveying • Planning
- Landscape Architecture

420 North Front Street,  
 McHenry, IL 60050-5507  
 t. 815.385.1778 f. 815.385.1781  
 www.secgroupinc.com

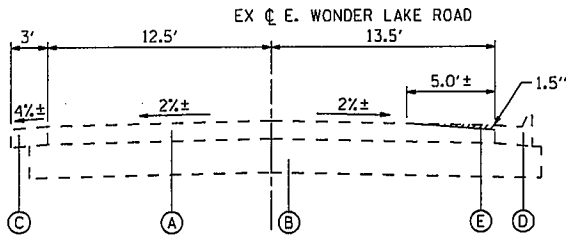
•McHenry,IL •Yorkville,IL •New Lenox,IL •Chicago,IL

**EXISTING AND PROPOSED  
 TYPICAL SECTIONS  
 WONDER LAKE ROAD**

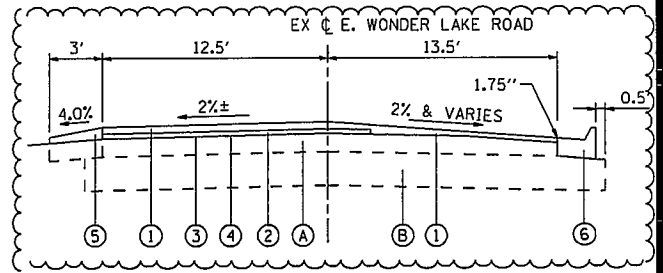
SHEET ORIENTATION

DATE: 10/26/09		
HORIZ. SCALE: N.T.S.		
DWN. BY: JPA	DSN. BY: JPA	CHK. BY: TH
PROJECT NO. 09-00006-00-RS		
SHEET NO. 4		

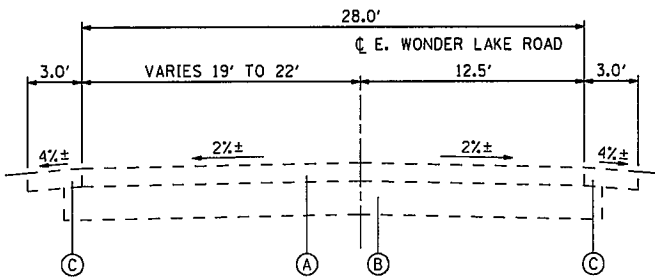
Revised 10-29-09



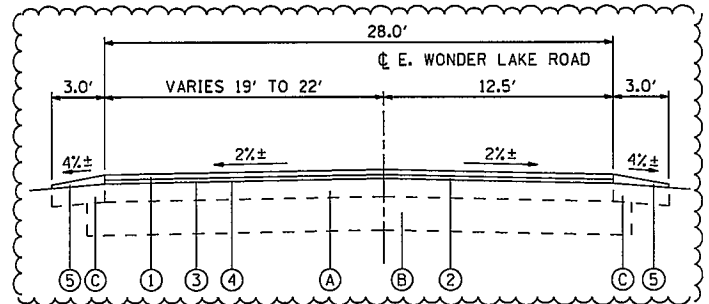
EXISTING E. WONDER LAKE ROAD  
 STA. 374+88.00 TO STA. 379+26.00



PROPOSED E. WONDER LAKE ROAD  
 STA. 374+88.00 TO STA. 379+26.00



EXISTING E. WONDER LAKE ROAD  
 STA. 379+26.00 TO STA. 380+97.00



PROPOSED E. WONDER LAKE ROAD  
 STA. 379+26.00 TO STA. 380+97.00

**EXISTING LEGEND**

- (A) EXISTING HOT-MIX ASPHALT PAVEMENT (TO BE OVERLAYED)
- (B) EXISTING AGGREGATE BASE COURSE
- (C) EXISTING AGGREGATE SHOULDERS
- (D) EXISTING CONCRETE CURB
- (E) HOT-MIX ASPHALT SURFACE REMOVAL, VARIABLE DEPTH

**PROPOSED LEGEND**

- (1) HOT-MIX ASPHALT SURFACE COURSE, MIX "D", N50; 1 3/4"
- (2) LEVELING BINDER (MACHINE METHOD), N50; 3/4"
- (3) BITUMINOUS MATERIALS (PRIME COAT)
- (4) AGGREGATE (PRIME COAT)
- (5) AGGREGATE SHOULDERS, TYPE B (TAPERING IN THICKNESS FROM 2 1/2" TO 1")
- (6) COMBINATION CONCRETE CURB AND GUTTER REMOVAL AND REPLACEMENT (AS DIRECTED BY THE RESIDENT ENGINEER)

SHEET 2 OF 2

NO.	DATE	BY
1	08/24/09	JPA
2	10/26/09	JPA
3		
4		
5		
6		
7		
8		
9		
10		

Illinois Professional Design Firm # 184-000108

**SEC Group, Inc.**  
 - Engineering • Surveying • Planning  
 - Landscape Architecture  
 420 North Front Street,  
 McHenry, IL 60050-5507  
 t. 815.385.1778 f. 815.385.1781  
 www.secgroupinc.com

•McHenry,IL •Yorkville,IL •New Lenox,IL •Chicago,IL

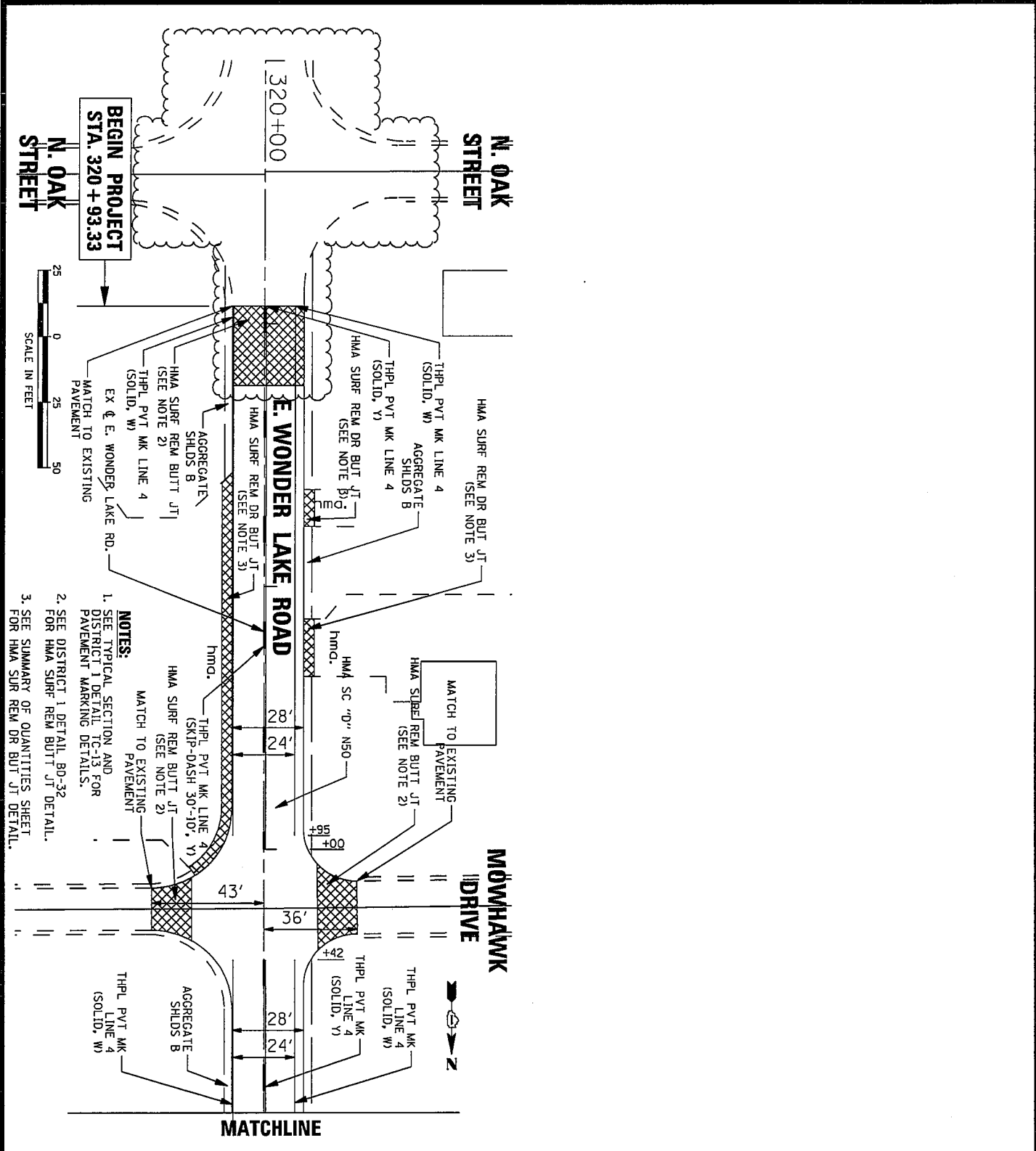
**EXISTING AND PROPOSED  
 TYPICAL SECTIONS  
 WONDER LAKE ROAD**

SHEET ORIENTATION

DATE: 10/26/09		
HORIZ. SCALE: N.T.S.		
DWN. BY: JPA	DSN. BY: JPA	CHK. BY: TH
PROJECT NO. 09-00006-00-RS		
SHEET NO. <b>5</b>		

revised 10-29-09





- NOTES:**
1. SEE TYPICAL SECTION AND DISTRICT 1 DETAIL TC-13 FOR PAVEMENT MARKING DETAILS.
  2. SEE DISTRICT 1 DETAIL BD-32 FOR HMA SURF REM BUTT JT DETAIL.
  3. SEE SUMMARY OF QUANTITIES SHEET FOR HMA SURF REM DR BUTT JT DETAIL.

NO.	DATE	BY
1.		
2.	10/26/09	JPA
3.		
4.		
5.		
6.		
7.		
8.		
9.		
10.		

Illinois Professional Design Firm # 184-000108

**SEC Group, Inc.**

- Engineering • Surveying • Planning
- Landscape Architecture

420 North Front Street,  
 McHenry, IL 60050-5507  
 t. 815.385.1778 f. 815.385.1781  
 www.secgroupinc.com

•McHenry,IL •Yorkville,IL •New Lenox,IL •Chicago,IL

# PROPOSED PLAN WONDER LAKE ROAD RESURFACING

SHEET ORIENTATION

DATE: 10/26/09		
HORIZ. SCALE: 1" = 50'		
DWN. BY: JPA	DSN. BY: JPA	CHK. BY: TH
SECTION NO. 09-00006-00-RS		
SHEET NO. <b>8</b>		

*Revised 10-29-09*