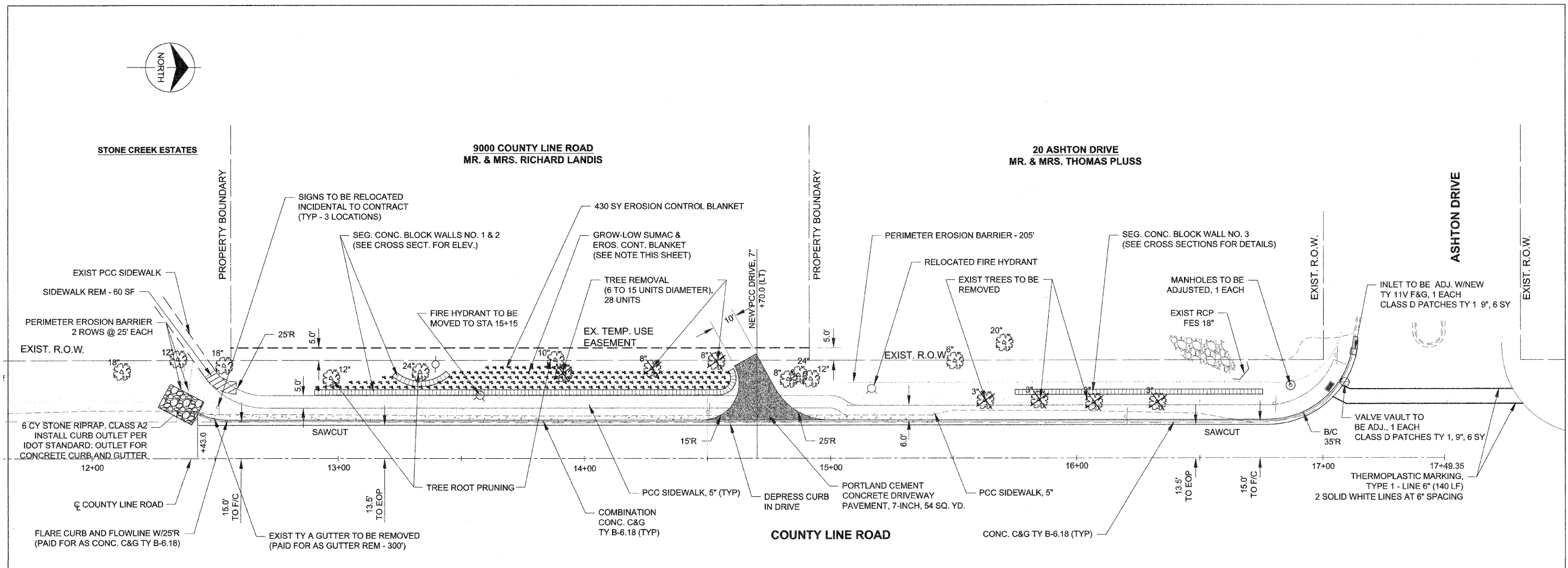


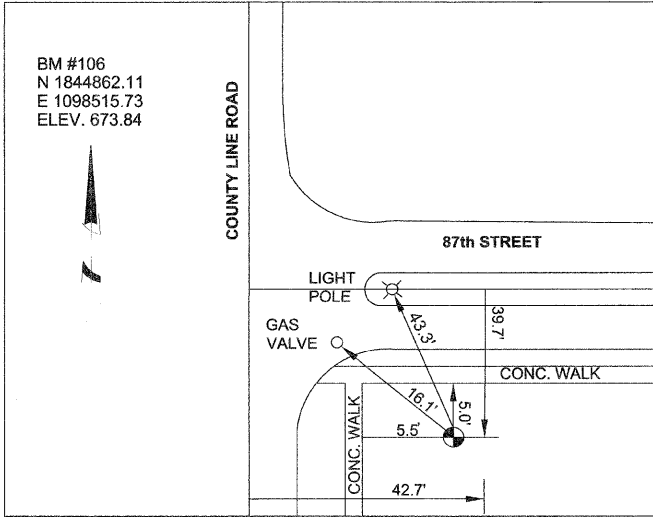
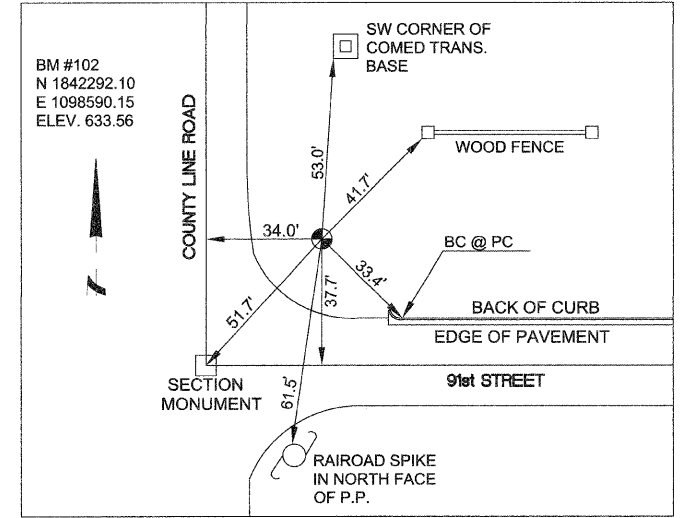
PLAN	DATE
BY	
REVISIONS	
NO.	
DATE	
BY	
DESCRIPTION	
DATE	
BY	
DESCRIPTION	
DATE	
BY	
DESCRIPTION	
DATE	

PROFILE	DATE
BY	
REVISIONS	
NO.	
DATE	
BY	
DESCRIPTION	
DATE	
BY	
DESCRIPTION	
DATE	



NOTES:
 GRO-LOW SUMAC (RHUS AROMATICA "GRO-LOW", 1 GAL. CONTAINER) TO BE PLACED AT THE ROW SPACING OF 2 FEET AND BETWEEN THE PLANTS IN EACH ROW AT 3 FEET SPACING WHICH SHALL BE INSTALLED BEHIND THE RETAINING WALLS AS SHOWN ON THE PLAN.

BENCHMARKS (DETAILS NOT TO SCALE)



FILE NAME =	USER NAME =	DESIGNED --	REVISED --	STATE OF ILLINOIS DEPARTMENT OF TRANSPORTATION	C003 PLAN AND PROFILE (NEAR 91ST STREET)	F.A.U. RTE.	SECTION	COUNTY	TOTAL SHEETS	SHEET NO.
		DRAWN --	REVISED --			09-00040-00-SW	COOK	16	6	
		CHECKED --	REVISED --			COUNTY LINE ROAD (CH W19) SIDEWALK	CONTRACT NO. 63253			
		DATE --	REVISED --			FED. ROAD DIST. NO. 1 ILLINOIS FED. AID PROJECT				