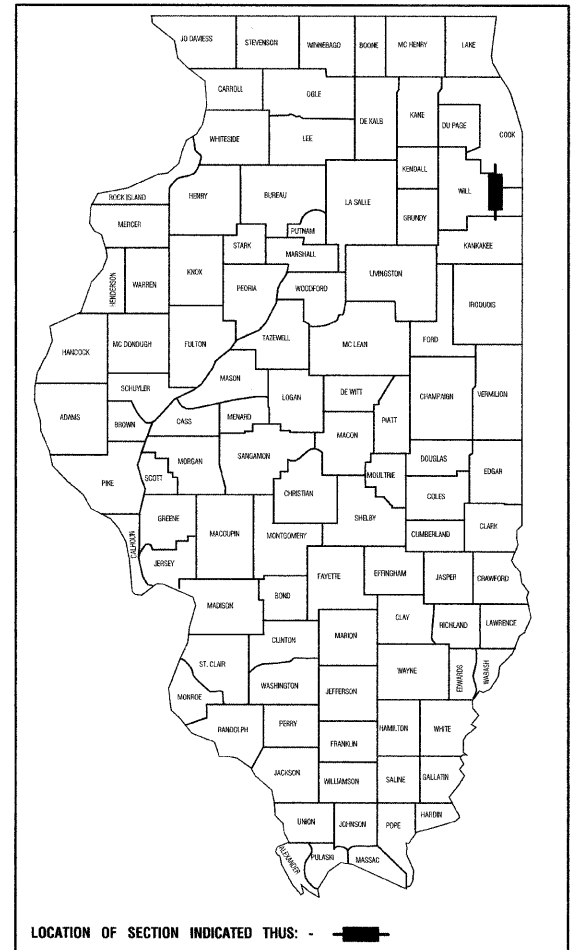


F. A. U. NO.	SECTION	COUNTY	TOTAL SHEETS	SHEET NO.
4304	09-00046-00-SW	WILL	7	1
STA.		TO STA.		
FED. ROAD DIST. NO. 1		ILLINOIS	FED. AID PROJECT ARA-9003(362)	

CONTRACT #63260



STATE OF ILLINOIS DEPARTMENT OF TRANSPORTATION  
DIVISION OF HIGHWAYS

Approved: *[Signature]*  
Village of Peotone - President  
Local Agency Position

Passed: SEPTEMBER 1, 2009  
*[Signature]*  
District 1 Engineer of Local Roads & Streets

Released for Bid Based on Limited Review: SEPTEMBER 1, 2009  
*[Signature]*  
Deputy Director of Highways, Region 1 Engineer

**DESCRIPTION OF IMPROVEMENT**  
THIS IMPROVEMENT CONSISTS OF EARTH EXCAVATION, SIDEWALK, LANDSCAPING, AND ALL INCIDENTAL WORK AS NECESSARY TO COMPLETE THE IMPROVEMENT SHOWN HEREIN AND AS DESCRIBED IN THE SPECIFICATIONS.

PREPARED BY OR UNDER THE DIRECT SUPERVISION OF:  
*[Signature]*  
8/17/09

62-56258 REGISTERED PROFESSIONAL ENGINEER  
STATE OF ILLINOIS  
LICENSE EXPIRES: 11/30/09

STATE OF ILLINOIS  
DEPARTMENT OF TRANSPORTATION  
DIVISION OF HIGHWAYS

# PLANS FOR PROPOSED FEDERAL AID HIGHWAY

RATHJE ROAD (FAU 4304) SIDEWALK EXTENSION  
CORNING AVE. TO NORTH STREET  
PROJECT: ARA-9003(362)  
SECTION NO.: 09-00046-00-SW  
JOB NO.: C-91-677-09  
VILLAGE OF PEOTONE  
WILL COUNTY

**INDEX OF SHEETS**

- COVER SHEET
- SUMMARY OF QUANTITIES, GENERAL NOTES AND TYPICAL CROSS SECTIONS
- PLAN AND PROFILE
- 6. CROSS SECTIONS
- CONSTRUCTION DETAILS

**HIGHWAY STANDARDS**

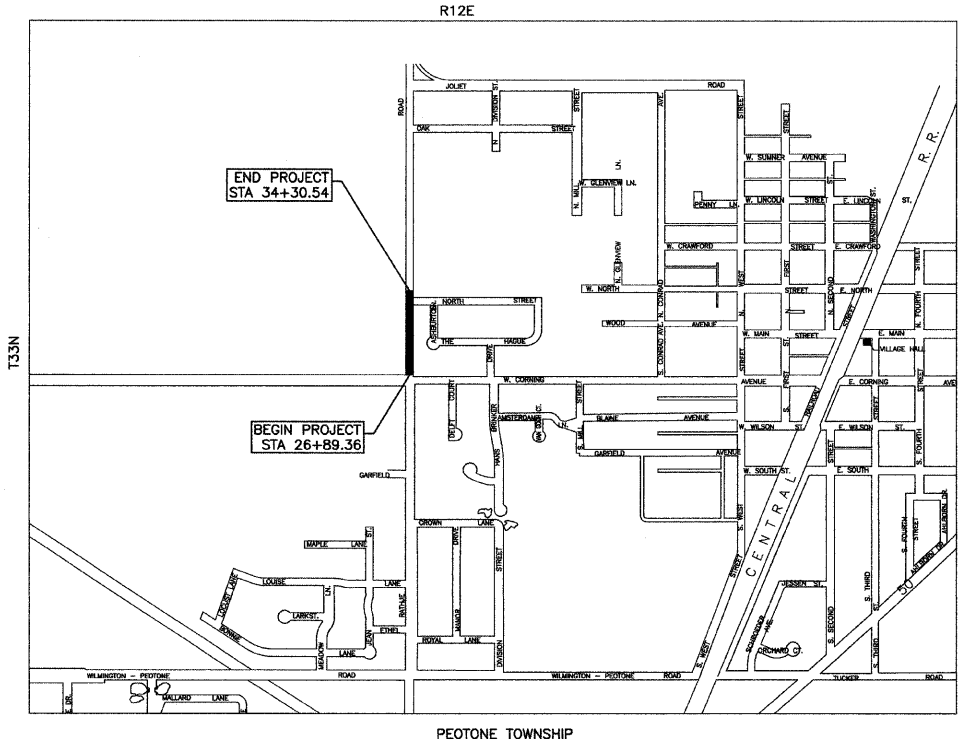
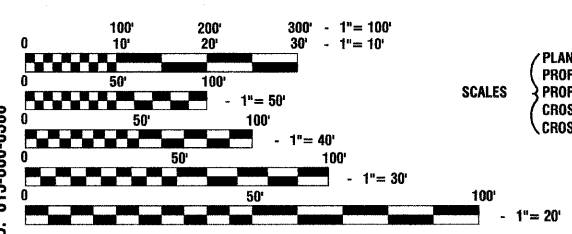
- 000001-05 STANDARD SYMBOLS, ABBREVIATIONS AND PATTERNS
- 280001-04 TEMPORARY EROSION CONTROL SYSTEMS
- 424001-05 CURB RAMPS FOR SIDEWALKS
- 602301-02 INLET - TYPE A
- 604036-02 GRATE TYPE 8
- 606001-04 CONCRETE CURB & COMBINATION CONCRETE CURB & GUTTER
- 701006-03 OFF-RD OPERATIONS, 2L, 2W, 15' TO 24' FROM PAVEMENT EDGE
- 701501-05 URBAN LANE CLOSURE, 2L, 2W, UNDIVIDED
- 701901-01 TYPICAL PAVEMENT MARKINGS

DESIGN DESIGNATION - RATHJE ROAD ADT 7,000 (2030) - COLLECTOR  
PV=6,650 SU=280 MU=70

2005 ADT - 2,000  
2030 ADT - 7,000

EXISTING SPEED LIMIT - 30 MPH  
PROPOSED SPEED LIMIT - 30 MPH

DESIGN PERIOD - 20 YEARS  
DESIGN SPEED LIMIT - 35 MPH  
STREET CLASSIFICATION - CLASS II ROAD



N  
SCALE: 1"=800'

**PROJECT LOCATION**

GROSS LENGTH = 741.18 FEET = 0.14 MILES  
NET LENGTH = 741.18 FEET = 0.14 MILES

PRINTED BY THE AUTHORITY OF THE STATE OF ILLINOIS

FIELD ENGINEER: MELCHOR MANGOBA 847-705-4408  
CONSULTANTS: ROBINSON ENGINEERING, LTD. 815-806-0300

J. U. L. I. E.  
JOINT UTILITY LOCATION INFORMATION FOR EXCAVATION  
1-800-892-0123 or 811

CONTRACT NO. 63260