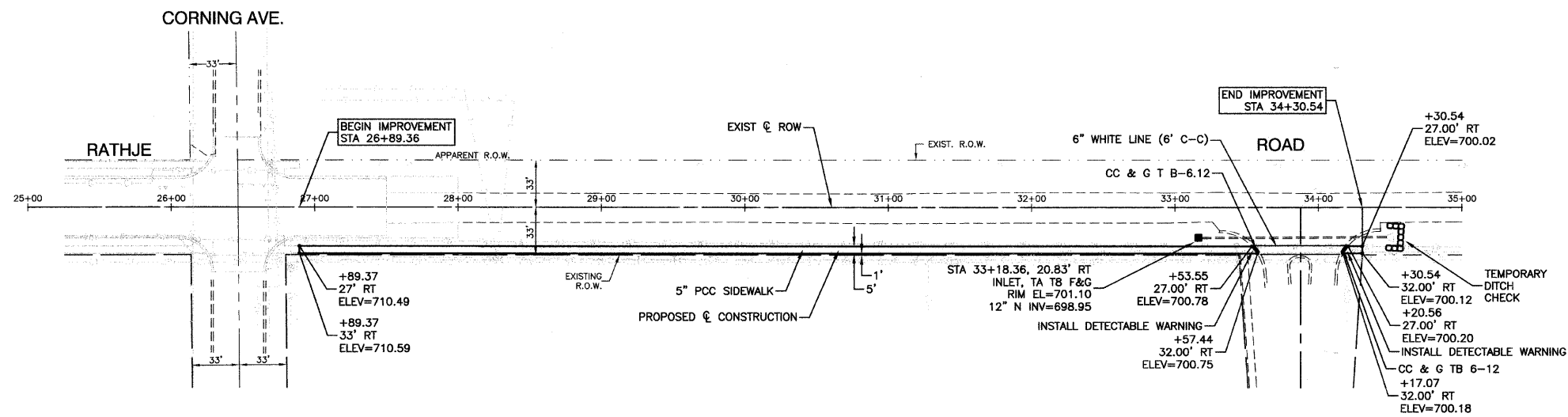


EXISTING CONDITIONS



PROPOSED IMPROVEMENTS



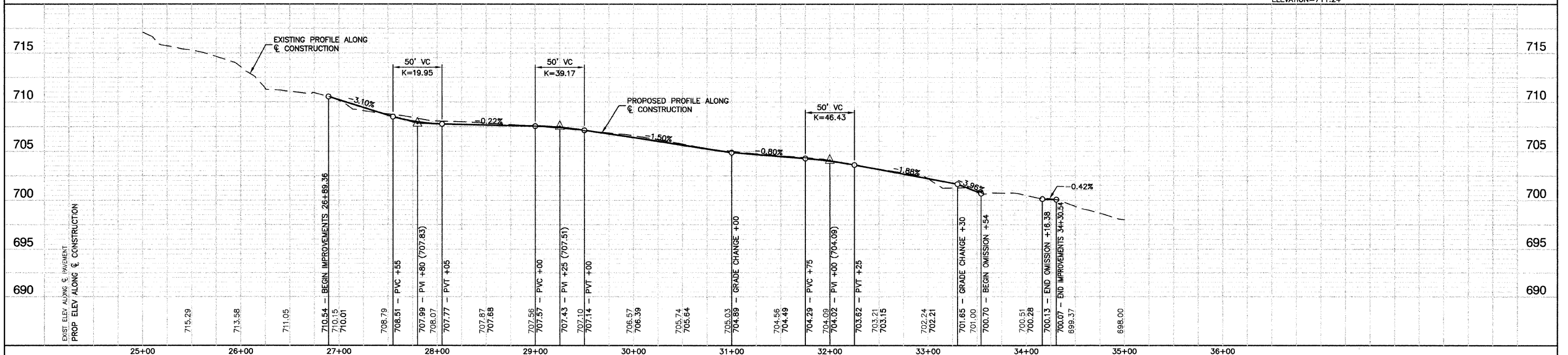
LEGEND

- CONC. CURB AND GUTTER REMOVAL
- ▣ SIDEWALK REMOVAL

- NOTE:
1. P.C.C. SIDEWALK SHALL BE 6" THICK THRU ALL DRIVEWAYS.
  2. ALL P.C.C. SIDEWALK SHALL BE 5' WIDE EXCEPT WHERE SHOWN ON PLANS.
  3. ALL CURB RAMP FOR SIDEWALK SHALL INCLUDE DETECTABLE WARNINGS AND DEPRESSED CURB PER CURRENT HIGHWAY STANDARDS.
  4. OFFSETS ARE NOTED FROM CL OF CONSTRUCTION.

BENCH MARK:

BENCH MARK #26  
R.R. SPIKE IN SOUTH FACE OF POWER POLE, 1ST PP  
EAST OF RATHJE RD., NORTH SIDE CORNING AVE.  
ELEVATION=711.24



FILE NAME = 0822-PLAN 01 - P01	USER NAME =	DESIGNED = CMK	REVISED =	STATE OF ILLINOIS DEPARTMENT OF TRANSPORTATION	RATHJE ROAD SIDEWALK EXTENSION CORNING AVE. TO NORTH ST.	F.A.U. RTE. = 4304	SECTION = 09-00046-00-SW	COUNTY = WILL	TOTAL SHEETS = 7	SHEET NO. = 3		
	PLOT SCALE = 1"=50'	CHECKED = CMK	REVISED =			SCALE: H 1"=50' V 1"=5'	SHEET NO. 3 OF 7 SHEETS	STA.	TO STA.	CONTRACT NO. 63260		
	PLOT DATE = 08-06-09	DRAWN = AG	REVISED =			FED. ROAD DIST. NO. 1 ILLINOIS FED. AID PROJECT ARA-9003(362)						
		CHECKED = AG	REVISED =									