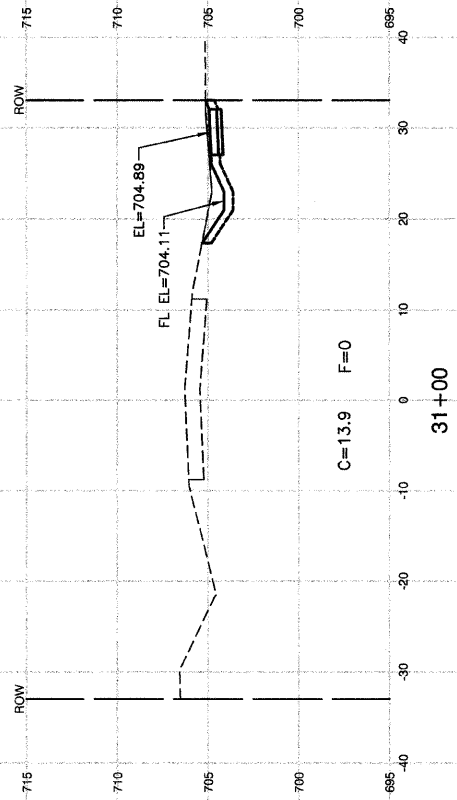
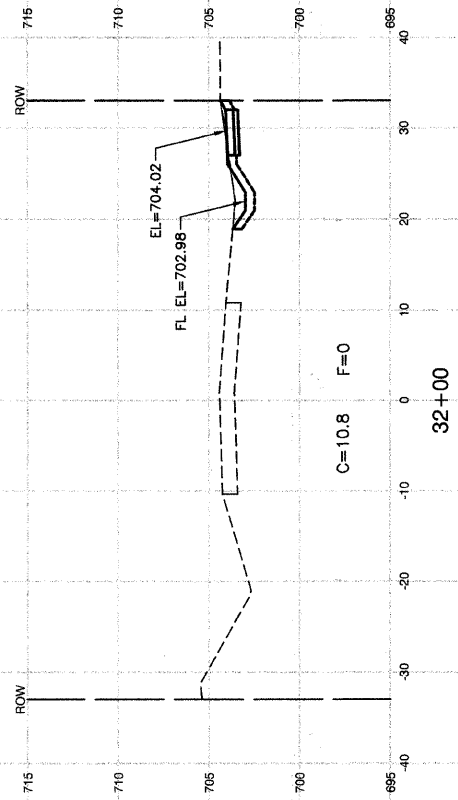
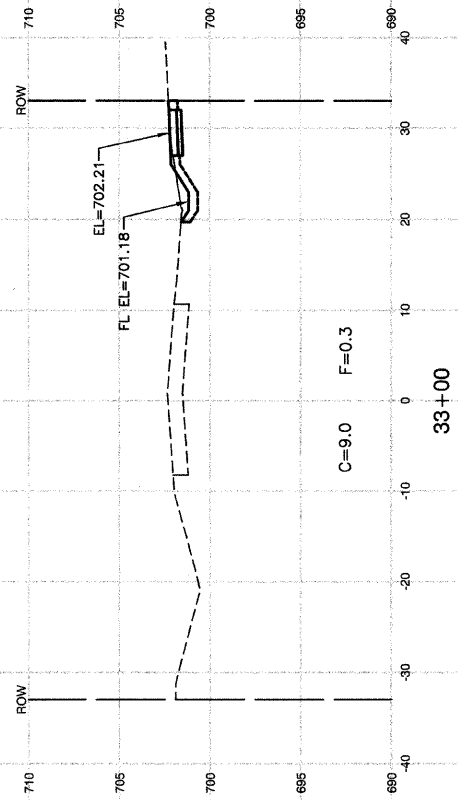
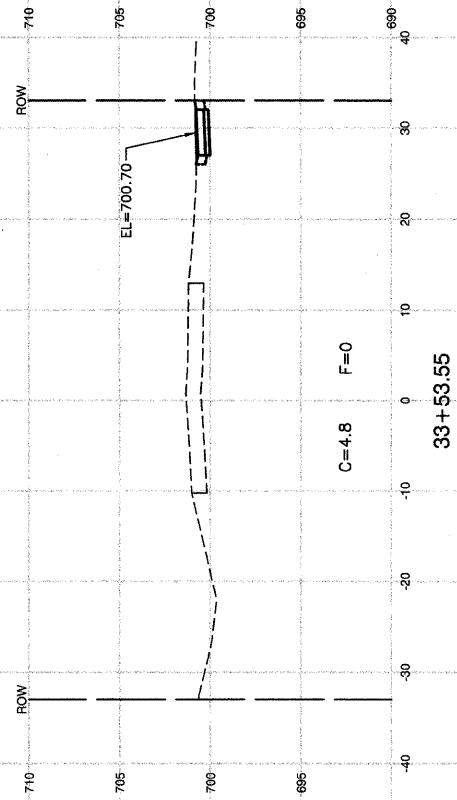


NOTE: PROPOSED INLET
 @ STA. 33+18.36, 20.83'RT
 RIM EL=7101.10



FILE NAME = 08322-XSCT-01 - X02

USER NAME =	DESIGNED — CMK	REVISED —
	CHECKED — CMK	REVISED —
PLOT SCALE =	DRAWN — AG	REVISED —
PLOT DATE = 08-06-09	CHECKED — AG	REVISED —

STATE OF ILLINOIS
 DEPARTMENT OF TRANSPORTATION

RATHJE ROAD SIDEWALK EXTENSION CROSS SECTIONS	
SCALE: H 1"=10' V 1"=5'	SHEET NO. 5 OF 7 SHEETS
STA. _____	TO STA. _____

F.A.U. RTE.	SECTION	COUNTY	TOTAL SHEETS	SHEET NO.
4304	09-00046-00-SW	WILL	7	5
CONTRACT NO. 63260				
FED. ROAD DIST. NO. 1 ILLINOIS FED. AID PROJECT ARA-9003(362)				