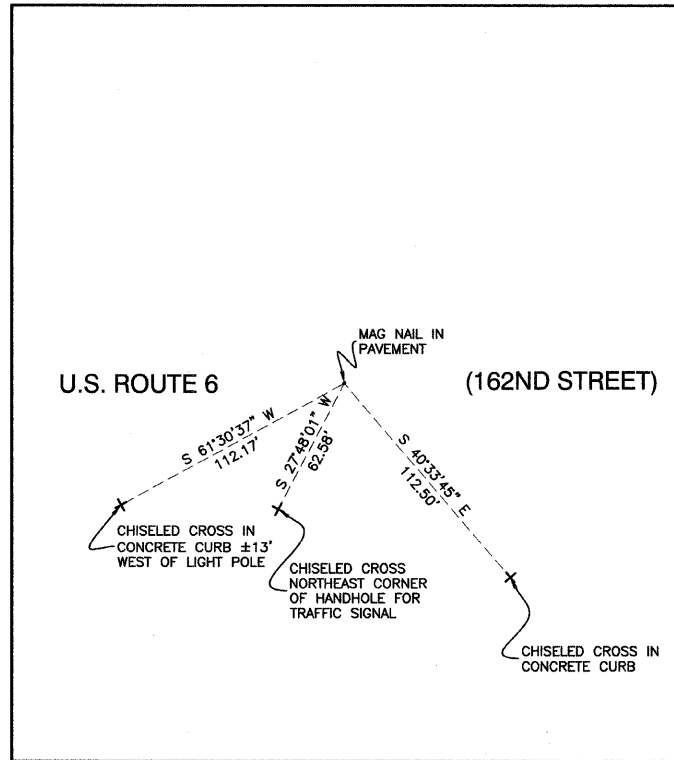
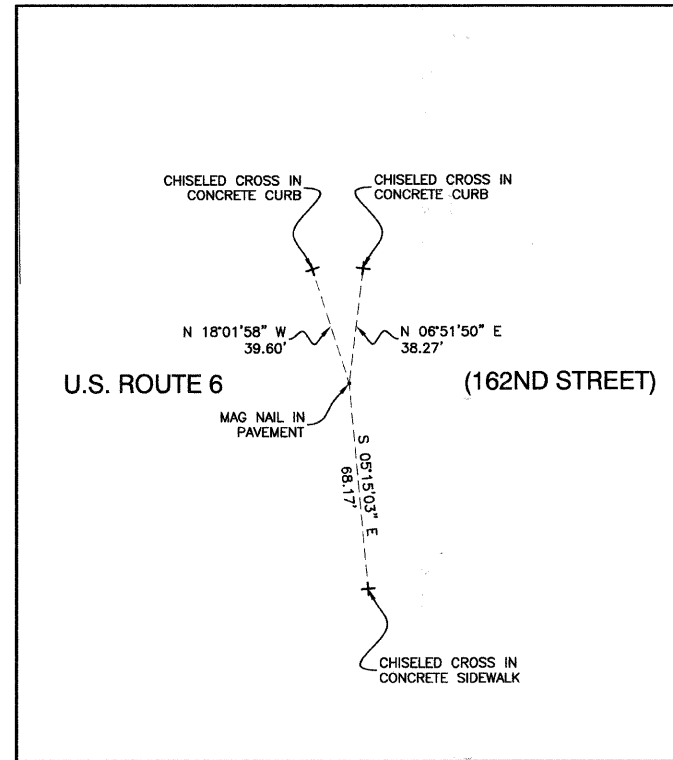


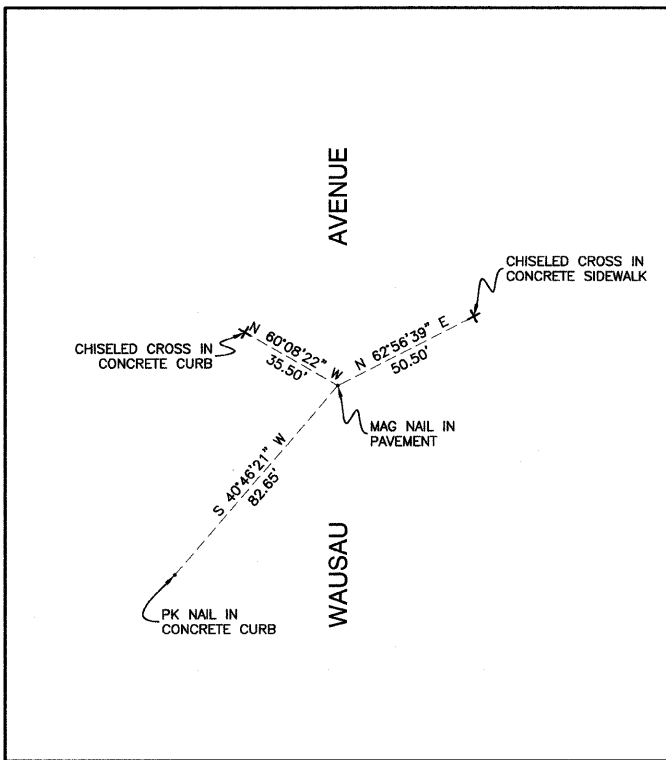
#13045 P.O.T. STATION 21+00.00 0.00' RIGHT U.S. ROUTE 6 (162ND STREET)  
NORTH=1797968.8094 EAST=1181194.0765



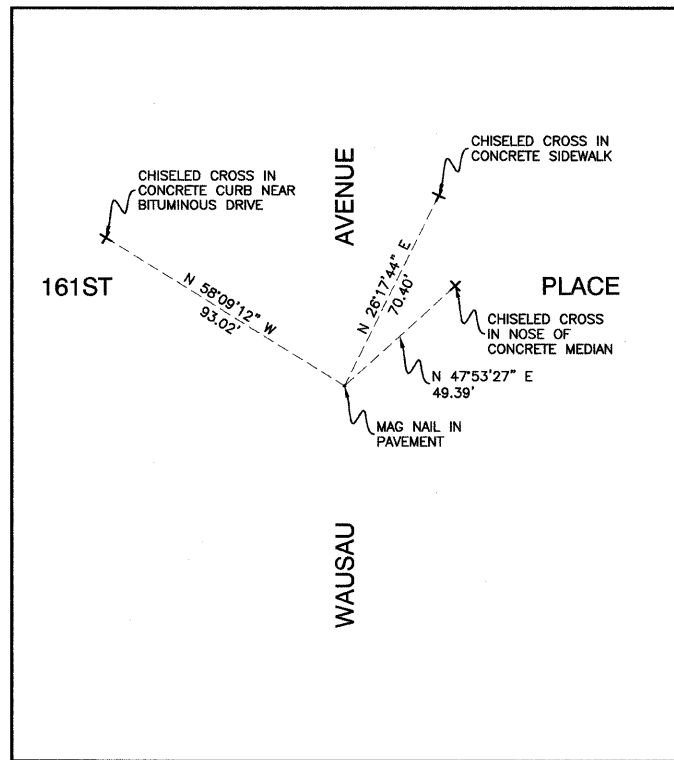
#13001 P.O.T. STATION 29+85.82 0.00' RIGHT U.S. ROUTE 6 (162ND STREET)  
P.O.T. STATION 56+43.99 0.00' RIGHT WAUSAU AVENUE  
NORTH=1797970.6084 EAST=1182079.8963



#13002 P.O.T. STATION 33+50.00 0.00' RIGHT U.S. ROUTE 6 (162ND STREET)  
NORTH=1797971.3480 EAST=1182444.0739



#13003 P.O.T. STATION 55+00.00 0.00' RIGHT WAUSAU AVENUE  
NORTH=1797826.6315 EAST=1182081.4810



#13004 P.O.T. STATION 59+67.00 0.00' RIGHT WAUSAU AVENUE  
NORTH=1798293.6019 EAST=1182076.3413



**NOTE:**

Coordinate values indicated hereon are based upon the North American Datum of 1983 adjustment of 2007 (N.A.D. '83 (2007)). The coordinate values are Illinois State Plane Eastern Zone estimated GROUND coordinates utilizing an average location for the length of the project having the following parameters:

WGS '84 North Latitude = 41°36'12.61512"  
WGS '84 West Longitude = 87°36'26.31198"  
WGS '84 Height = 489.412 U.S. Feet  
Orthometric Height = 599.082 U.S. Feet (estimated utilizing Geoid '03)

Utilization of these parameters should yield a ground scale factor of 1.0000032937.

Bearing indicated hereon are referenced to the North American Datum of 1983 adjustment of 2007 (N.A.D. '83 (2007)) Illinois State Plane Eastern Zone

FILE NAME = 06659-ALGN-01 - TIE 01	USER NAME =	DESIGNED - PKB	REVISED -
		CHECKED - PKB	REVISED -
	PLOT SCALE = NONE	DRAWN - REG	REVISED -
	PLOT DATE = 8-19-09	CHECKED - REG	REVISED -

STATE OF ILLINOIS  
DEPARTMENT OF TRANSPORTATION

US ROUTE 6 (162ND STREET) & WAUSAU AVENUE INTERSECTION IMPROVEMENTS ALIGNMENT AND TIES		F.A.P. RTE. 351	SECTION 09-00086-00-CH	COUNTY COOK	TOTAL SHEETS 43	SHEET NO. 7A
SCALE: NONE	SHEET NO. 7A OF 43 SHEETS	STA.	TO STA.	CONTRACT NO. 63261		
		FED. ROAD DIST. NO. 1 ILLINOIS FED. AID PROJECT M-9003(330)				