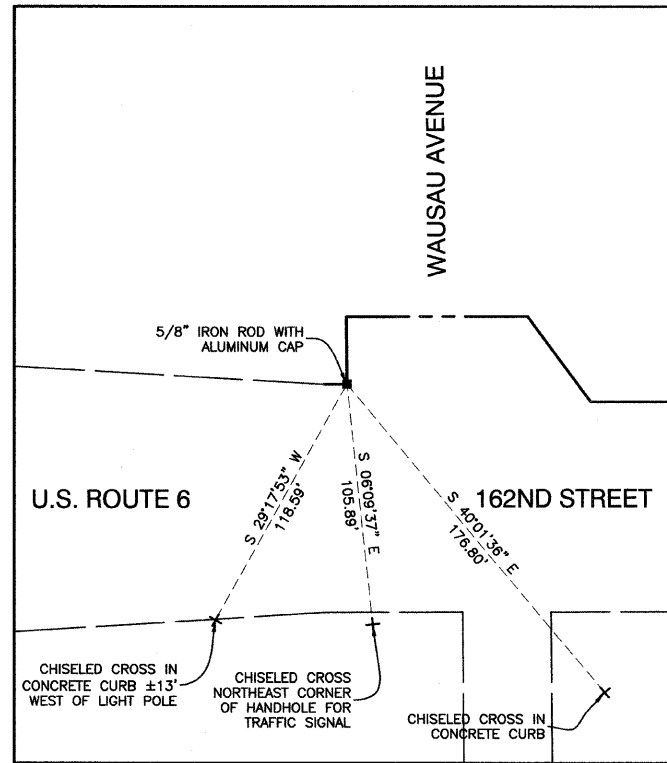
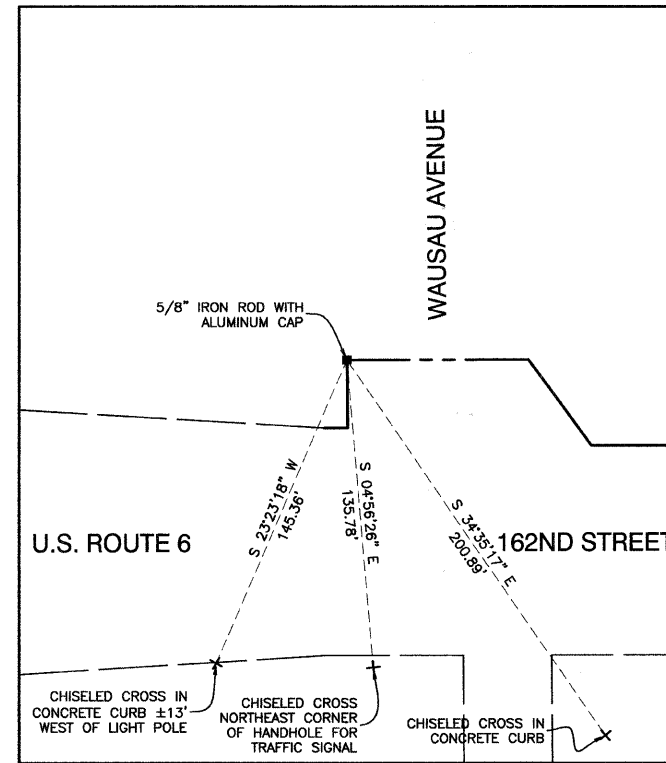


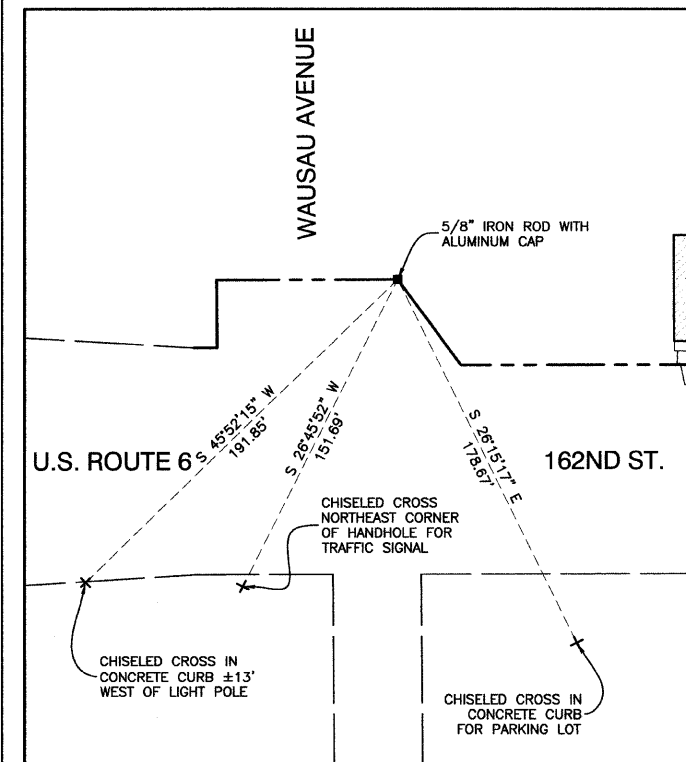
#13006 STATION 29+34.99 50.00' LEFT U.S. ROUTE 6 (162ND STREET)  
NORTH=1798020.5051 EAST=1182028.9598



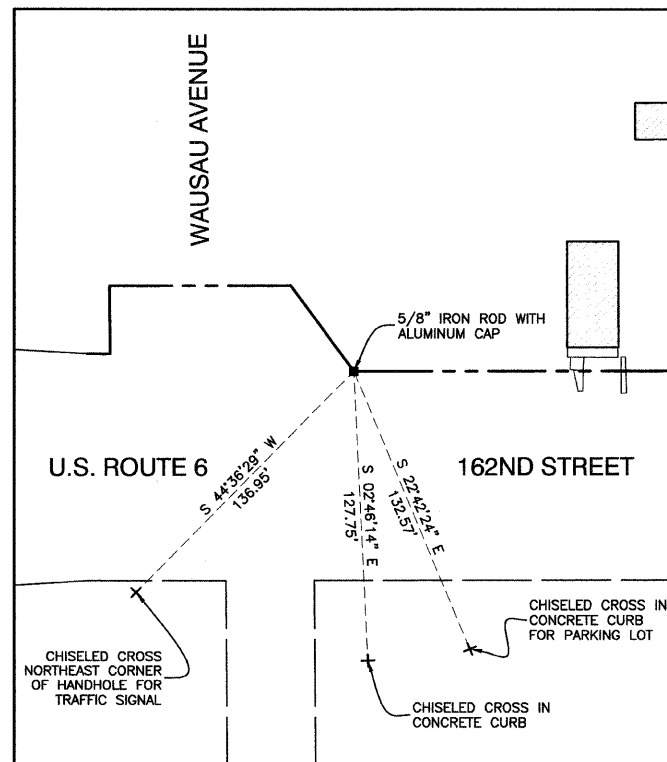
#13007 STATION 29+45.37 50.00' LEFT U.S. ROUTE 6 (162ND STREET)  
NORTH=1798020.5262 EAST=1182039.3445



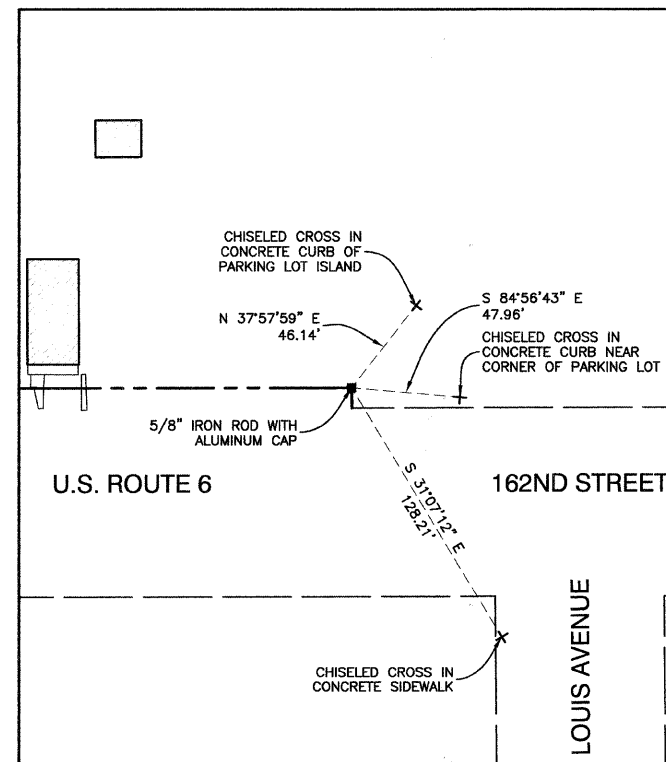
#13008 STATION 29+45.10 80.00' LEFT U.S. ROUTE 6 (162ND STREET)  
STATION 57+24.35 40.00' LEFT WAUSAU AVENUE  
NORTH=1798050.5237 EAST=1182039.0143



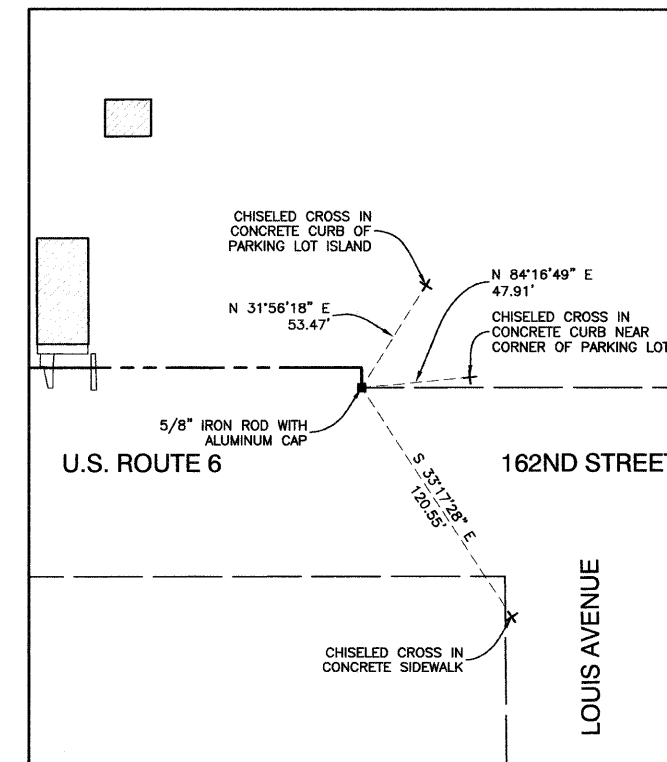
#13009 STATION 30+25.11 80.00' LEFT U.S. ROUTE 6 (162ND STREET)  
STATION 57+23.63 40.00' RIGHT WAUSAU AVENUE  
NORTH=1798050.6862 EAST=1182119.0174



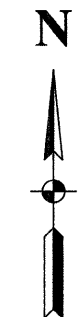
#13010 STATION 30+52.89 42.00' LEFT U.S. ROUTE 6 (162ND STREET)  
NORTH=1798012.7446 EAST=1182146.8797



#13011 STATION 32+90.06 42.00' LEFT U.S. ROUTE 6 (162ND STREET)  
NORTH=1798013.2262 EAST=1182384.0471



#13012 STATION 32+90.14 33.00' LEFT U.S. ROUTE 6 (162ND STREET)  
NORTH=1798004.2264 EAST=1182384.1462



**NOTE:**

Coordinate values indicated hereon are based upon the North American Datum of 1983 adjustment of 2007 (N.A.D. '83 (2007)). The coordinate values are Illinois State Plane Eastern Zone estimated GROUND coordinates utilizing an average location for the length of the project having the following parameters:

WGS '84 North Latitude = 41°36'12.61512"  
WGS '84 West Longitude = 87°36'26.31198"  
WGS '84 Height = 489.412 U.S. Feet  
Orthometric Height = 599.082 U.S. Feet (estimated utilizing Geoid '03)

Utilization of these parameters should yield a ground scale factor of 1.0000032937.

Bearing indicated hereon are referenced to the North American Datum of 1983 adjustment of 2007 (N.A.D. '83 (2007)) Illinois State Plane Eastern Zone

FILE NAME = 06959-ALGN-01 -TIE 02

USER NAME =	DESIGNED =	PKB	REVISED =
	CHECKED =	PKB	REVISED =
PLOT SCALE =	DRAWN =	REG	REVISED =
PLOT DATE =	CHECKED =	REG	REVISED =

STATE OF ILLINOIS  
DEPARTMENT OF TRANSPORTATION

US ROUTE 6 (162ND STREET) & WAUSAU AVENUE  
INTERSECTION IMPROVEMENTS  
ALIGNMENT AND TIES

SCALE: NONE SHEET NO. 7B OF 43 SHEETS STA. TO STA.

F.A.P. RTE.	SECTION	COUNTY	TOTAL SHEETS	SHEET NO.
351	09-00086-00-CH	COOK	43	7B
CONTRACT NO. 63261				
FED. ROAD DIST. NO. 1 ILLINOIS FED. AID PROJECT M-9003(330)				