

F. A. IL. NO.	SECTION	COUNTY	TOTAL SHEETS	SHEET NO.
0282	09-00053-00-RS	WILL.	11	1
STA.	TO STA.			
FED. ROAD DIST. NO. 1	ILLINOIS	FED. AID PROJECT ARA-9003-(361)		

CONTRACT #63264

STATE OF ILLINOIS
DEPARTMENT OF TRANSPORTATION
DIVISION OF HIGHWAYS

PLANS FOR PROPOSED FEDERAL AID HIGHWAY

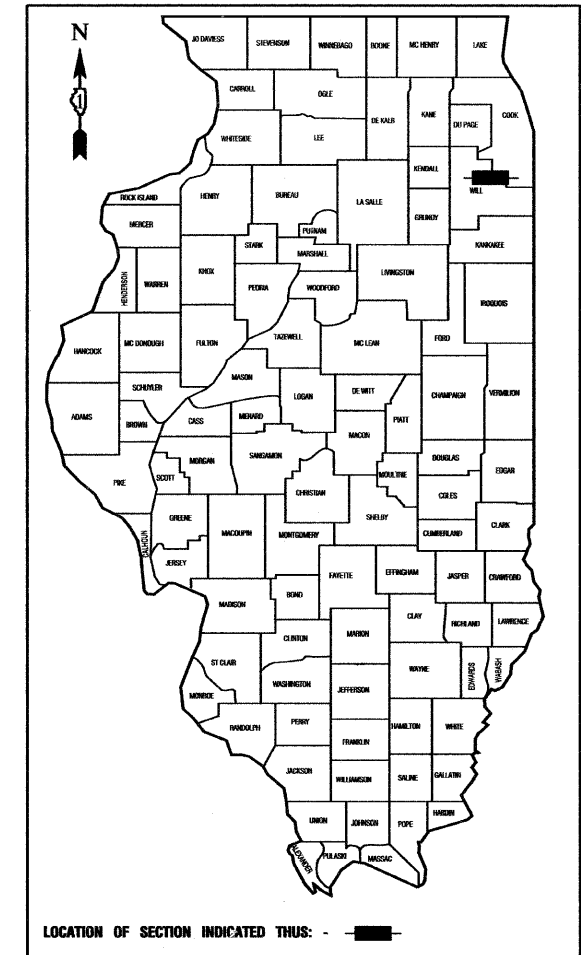
**FAU 0282/135TH STREET RESURFACING
IL-53 TO SANITARY & SHIP CANAL BRIDGE
LOCAL AGENCY PAVEMENT PRESERVATION
STREET RESURFACING
PROJECT: ARA-9003-(361)
SECTION NO.: 09-00053-00-RS
JOB NO.: C-91-676-09
VILLAGE of ROMEOVILLE
WILL COUNTY**

INDEX OF SHEETS

1. COVER SHEET, INDEX OF SHEETS, LOCATION MAP, INDEX OF STATE STANDARDS
2. SUMMARY OF QUANTITIES & GENERAL NOTES
3. TYPICAL CROSS SECTIONS
- 4.-5. PAVEMENT & STRIPING PLAN
- 6.-11. DISTRICT ONE STANDARD DETAILS

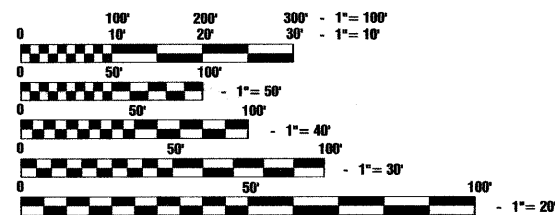
HIGHWAY STANDARDS

- | | |
|-----------|--|
| 000001-05 | STANDARD SYMBOLS, ABBREVIATIONS AND PATTERNS |
| 280001-04 | TEMPORARY EROSION CONTROL SYSTEMS |
| 442201-03 | CLASS C AND D PATCHES |
| 701601-06 | URBAN LANE CLOSURE, MULTILANE, 1W OR 2W WITH NONTRAVERSABLE MEDIAN |
| 701606-06 | URBAN LANE CLOSURE, MULTILANE, 2W WITH MOUNTABLE MEDIAN |
| 701701-06 | URBAN LANE CLOSURE, MULTILANE INTERSECTION |
| 701901-01 | TRAFFIC CONTROL DEVICES |
| 780001-02 | TYPICAL PAVEMENT MARKINGS |



I.D.O.T. FEDERAL AID DESIGN ENGINEER: MELCHOR MANGOBA, P.E. 847-705-4408
CONSULTANTS: ROBINSON ENGINEERING, LTD. HARRY L. GILMORE, JR., P.E. 815-806-0300

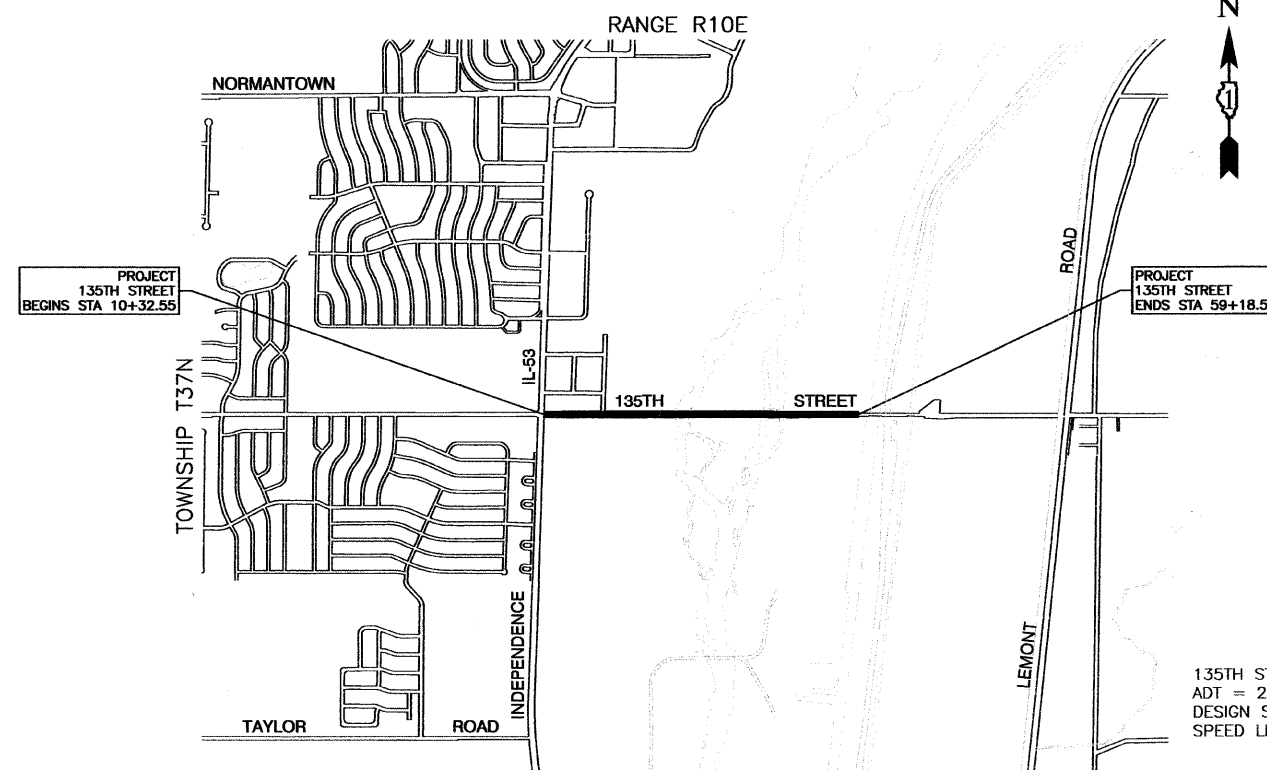
SCALES PLAN - 1"=50'



FULL SIZE PLANS HAVE BEEN PREPARED USING STANDARD ENGINEERING SCALES, REDUCED SIZED PLANS WILL NOT CONFORM TO STANDARD SCALES, IN MAKING MEASUREMENTS ON REDUCED PLANS, THE ABOVE SCALES MAY BE USED.

J. U. L. I. E.
JOINT UTILITY LOCATION INFORMATION FOR EXCAVATION
1-800-892-0123 or 811

CONTRACT NO. 63264



LOCATION MAP

GROSS LENGTH=4,885.98 FEET=0.93 MILES
NET LENGTH=4,274.24 FEET=0.81 MILES

135TH STREET SECONDARY ARTERIAL
ADT = 22,400 (2009)
DESIGN SPEED = 45 MPH
SPEED LIMIT = 45 MPH

STATE OF ILLINOIS DEPARTMENT OF TRANSPORTATION
DIVISION OF HIGHWAYS

Approved: John D. Mohr July 22, 2009
President, Village of Romeoville

Passed: Christophe Holt August 31, 2009
District 1 Engineer of Local Roads & Streets

Released for Bid Based on Limited Review: Diane M. O'Keefe September 1, 2009
Deputy Director of Highways, Region 1 Engineer

**PRINTED BY THE AUTHORITY OF
THE STATE OF ILLINOIS**

PREPARED BY OR UNDER THE
DIRECT SUPERVISION OF:
Harry L. Gilmore, Jr.
7/22/09

