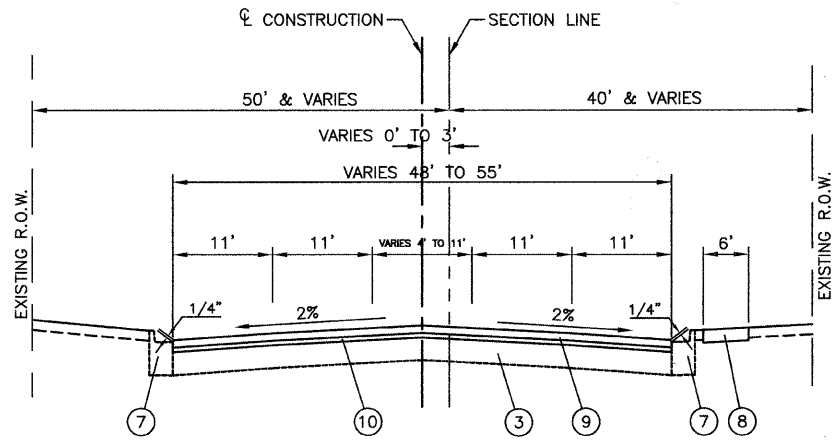


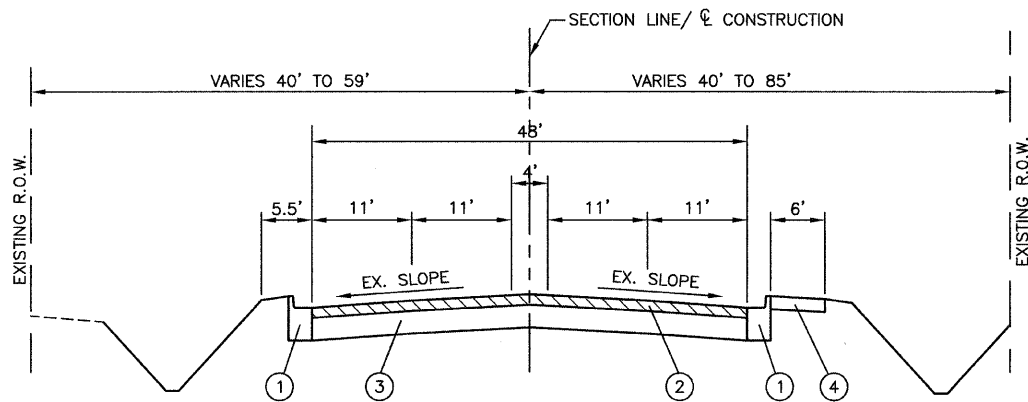
**EXISTING TYPICAL CROSS SECTION**

135TH STREET  
STA 10+32.55 TO STA 14+83.29



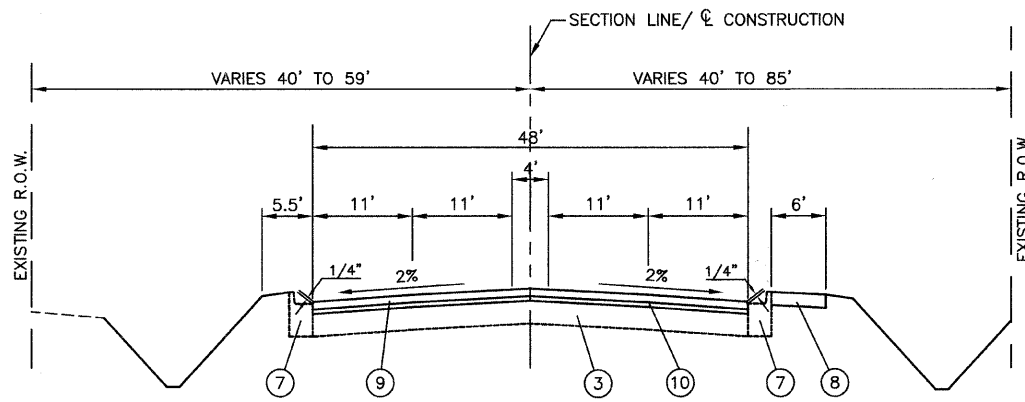
**PROPOSED TYPICAL CROSS SECTION**

135TH STREET  
STA 10+32.55 TO STA 14+83.29



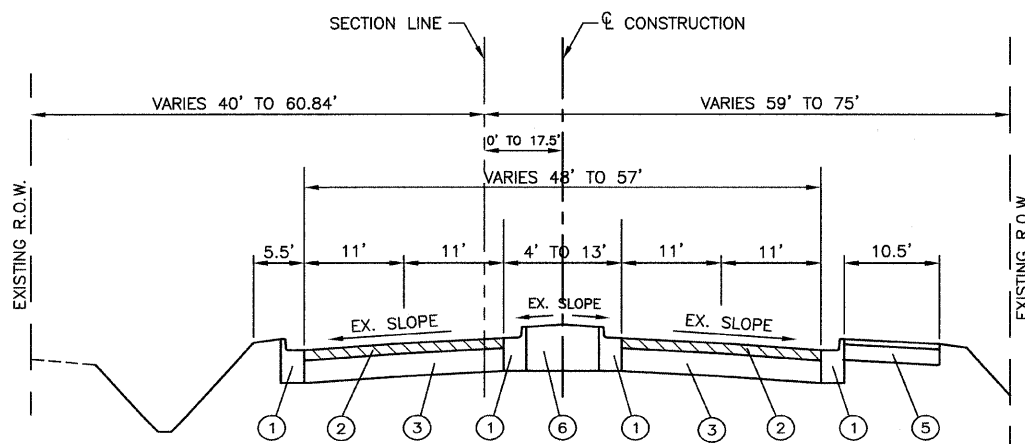
**EXISTING TYPICAL CROSS SECTION**

135TH STREET  
STA 14+83.29 TO STA 24+57.60



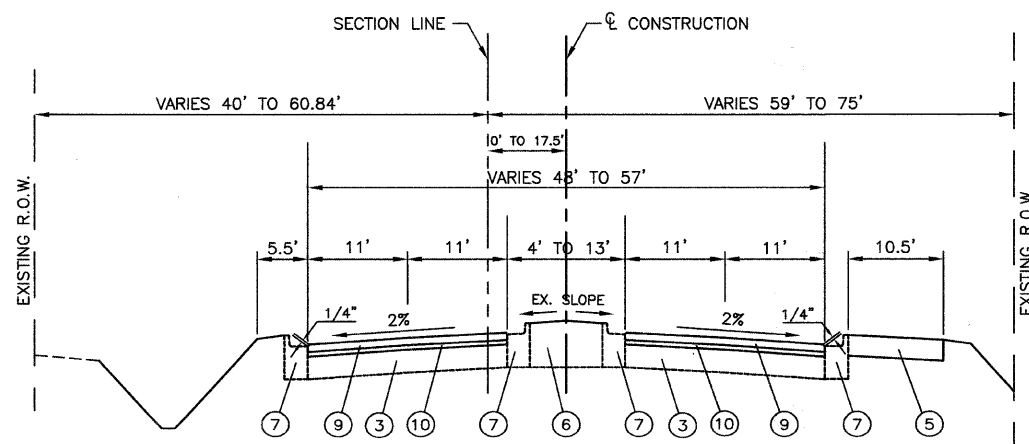
**PROPOSED TYPICAL CROSS SECTION**

135TH STREET  
STA 14+83.29 TO STA 24+57.60



**EXISTING TYPICAL CROSS SECTION**

135TH STREET  
STA 24+57.60 TO STA 59+18.53  
(EXCLUDING STRUCTURES)



**PROPOSED TYPICAL CROSS SECTION**

135TH STREET  
STA 24+57.60 TO STA 59+18.53  
(EXCLUDING STRUCTURES)

**LEGEND**

- ① EXISTING CURB & GUTTER TO BE REMOVED AT LOCATIONS SHOWN ON PLANS OR DIRECTED BY ENGINEER
- ② HOT-MIX ASPHALT SURFACE REMOVAL, 2"
- ③ EXISTING HOT-MIX ASPHALT BASE COURSE TO REMAIN, ±9"
- ④ EXISTING PC CONCRETE SIDEWALK TO BE REMOVED AT LOCATIONS SHOWN ON PLANS OR DIRECTED BY ENGINEER
- ⑤ EXISTING HOT-MIX ASPHALT BIKE PATH TO REMAIN
- ⑥ EXISTING HOT-MIX ASPHALT MEDIAN TO REMAIN
- ⑦ COMBINATION CURB & GUTTER, B-6.24, AT LOCATIONS SHOWN ON PLANS OR DIRECTED BY ENGINEER
- ⑧ PC CONCRETE SIDEWALK, 5" AT LOCATIONS SHOWN ON PLANS OR DIRECTED BY ENGINEER
- ⑨ HOT-MIX ASPHALT SURFACE COURSE, MIX "D", N70, 1 1/2"
- ⑩ POLYMERIZED LEVELING BINDER (MACHINE METHOD), IL-4.75, N50, 3/4"

**HOT-MIX ASPHALT MIXTURE REQUIREMENTS**

(CONTRACTOR SHALL MILL BEFORE PATCHING)

MIXTURE TYPE	AIR VOIDS % Ndes
RESURFACING	
HOT-MIX ASPHALT SURFACE COURSE, MIX "D", N70 (IL-9.5 mm): 1 1/2"	4% @ 70 Gyr.
POLYMERIZED LEVELING BINDER (MACHINE METHOD), IL-4.75, N50, 3/4"	4% @ 50 Gyr.
DRIVEWAYS	
HOT-MIX ASPHALT SURFACE COURSE, MIX "C", N50 (IL-9.5mm): 2"	4% @ 50 Gyr.
HOT-MIX ASPHALT BASE COURSE, (HMA BINDER IL-19.0mm): 6"	4% @ 50 Gyr.
PATCHING	
CLASS D PATCHES, TYPE III, IV, (HMA BINDER IL-19.0mm): 9"	4% @ 70 Gyr.

THE UNIT WEIGHT USED TO CALCULATE ALL HMA SURFACE MIXTURE QUANTITIES IS 112 LBS/SQ YD/IN. THE "AC TYPE" FOR POLYMERIZED HMA MIXES SHALL BE "SBS/SBR PG 70-22" AND FOR NON-POLYMERIZED HMA THE "AC TYPE" SHALL BE "PG 64-22" UNLESS MODIFIED BY DISTRICT ONE SPECIAL PROVISIONS. FOR "PERCENT OF RAP" SEE DISTRICT ONE SPECIAL PROVISIONS.

**NOTE:**  
CLASS D PATCHES, TYPE III & IV AT APPROXIMATE STATIONS AS SHOWN ON THE PLANS OR AS DIRECTED BY THE ENGINEER.

FILE NAME = 09275-TYPX-01 - TYPX P01

USER NAME =	DESIGNED -- JRD	REVISED --
	CHECKED -- HLG	REVISED --
PLOT SCALE =	DRAWN -- LTL	REVISED --
PLOT DATE = 08-07-09	CHECKED -- HLG	REVISED --

STATE OF ILLINOIS  
DEPARTMENT OF TRANSPORTATION

135TH STREET RESURFACING		
IL-53 TO SANITARY & SHIP CANAL BRIDGE		
TYPICAL CROSS SECTIONS		
SCALE: NONE	SHEET NO. 3 OF 11 SHEETS	STA. TO STA.

F.A.U. RITE	SECTION	COUNTY	TOTAL SHEETS	SHEET NO.
0282	09-00063-00-RS	WILL	11	3
CONTRACT NO. 63264				
FED. ROAD DIST. NO. 1 ILLINOIS FED. AID PROJECT ARA-9003-(361)				