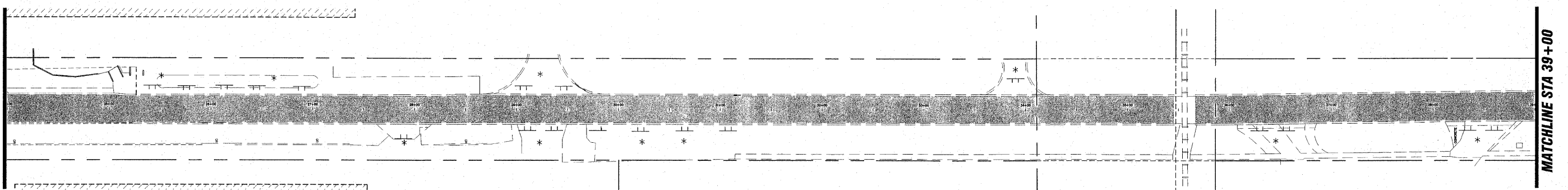
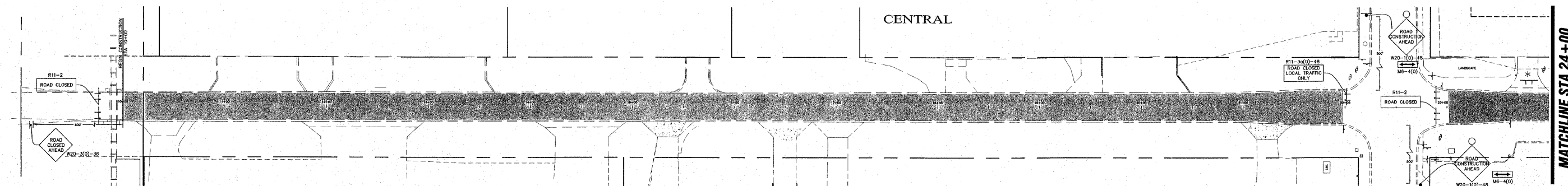


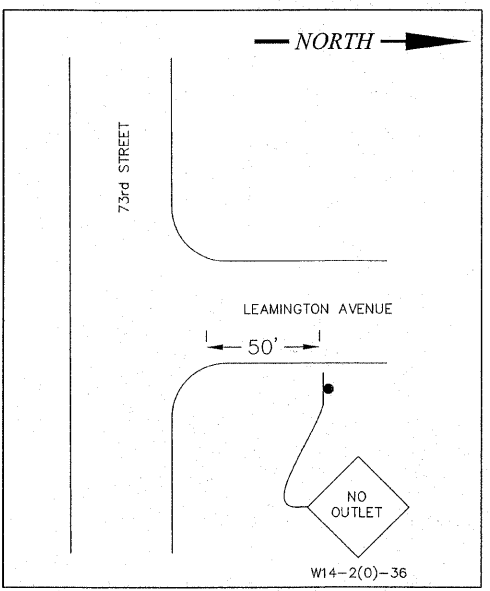
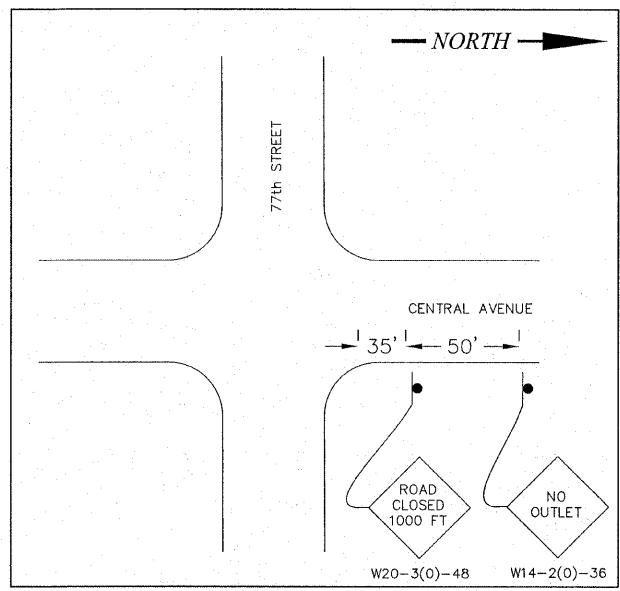
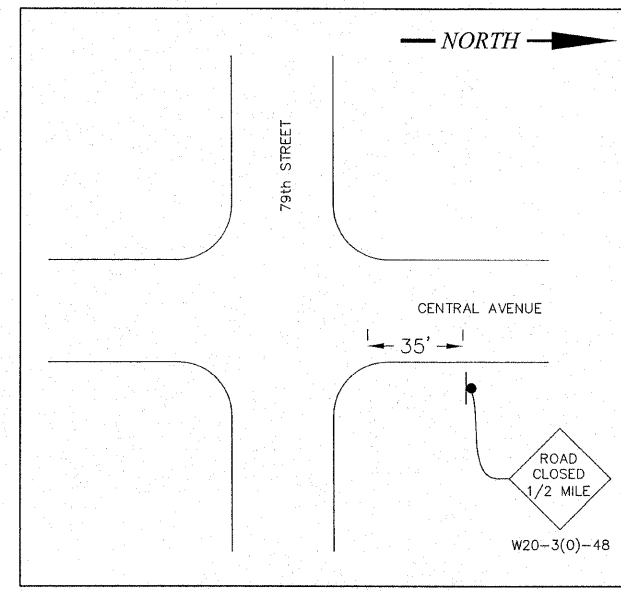
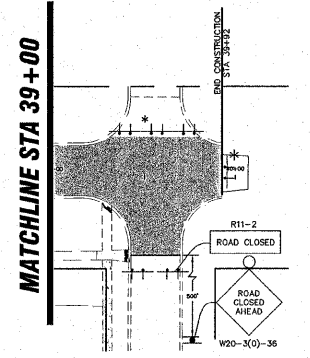
| FAU RTE. | SECTION | COUNTY | TOTAL SHEETS | SHEET NO. |
|---------------------|----------------|---------------|------------------|-----------|
| 2796 | 09-00031-00-PV | COOK | 16 | 11 |
| STA. 10+00 | | TO STA. 39+92 | | |
| FED. ROAD DIST. NO. | | ILLINOIS | FED. AID PROJECT | |
| CONTRACT NO. 63267 | | | | |



CENTRAL



hbe **Hoefler-Butler Engineering, Inc.**
 Consulting Civil Engineers - Land Surveyors
 PROFESSIONAL DESIGN FIRM LICENSE NO. 04-00089
 874 S. ROBERTS ROAD - HICKORY HILLS, ILLINOIS 60437
 (708) 359-0800 FAX (708) 359-0790



NOTES:
 1) CONTRACTOR RESPONSIBLE FOR BARRICADING DRIVEWAY ENTRANCES IF NECESSARY (WHERE MARKED *)
 2) CENTRAL AVENUE SOUTH OF 73rd STREET SHALL BE KEPT OPEN TO LOCAL TRAFFIC

- LEGEND**
- WORK AREA
 - SIGN ON PORTABLE OR PERMANENT SUPPORT
 - CONSTRUCTION SIGN WITH FLASHING LIGHT
 - TYPE III BARRICADE WITH FLASHING LIGHTS
 - TYPE III BARRICADE

| REVISIONS | | ILLINOIS DEPARTMENT OF TRANSPORTATION VILLAGE OF BEDFORD PARK TRAFFIC CONTROL PLAN 70th PLACE TO VILLAGE LIMITS (RR TRACKS) |
|---------------------|----------|--|
| NAME | DATE | |
| JMH PER IDOT REVIEW | 08/25/09 | SCALE: HORIZ: 1"=50' DATE: 07/16/09 |
| JMH PER IDOT REVIEW | 08/31/09 | |
| | | DRAWN BY: JMH CHECKED BY: SAL |