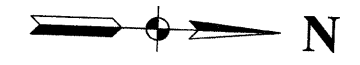
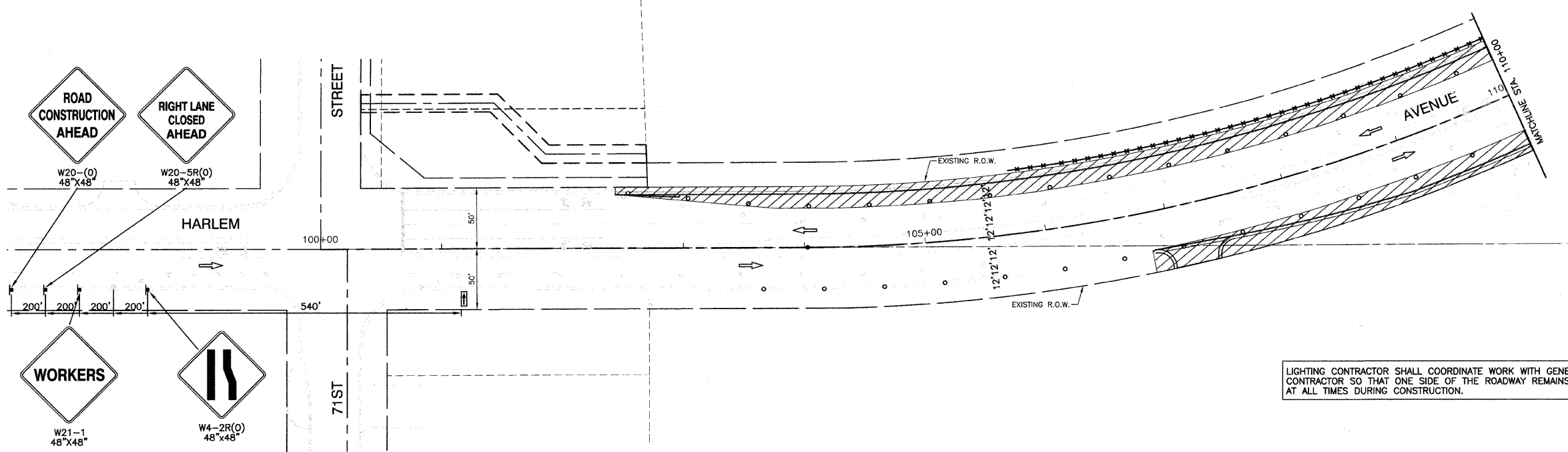


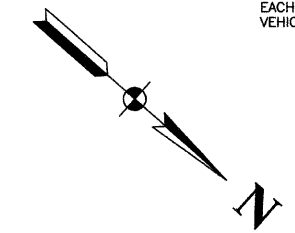
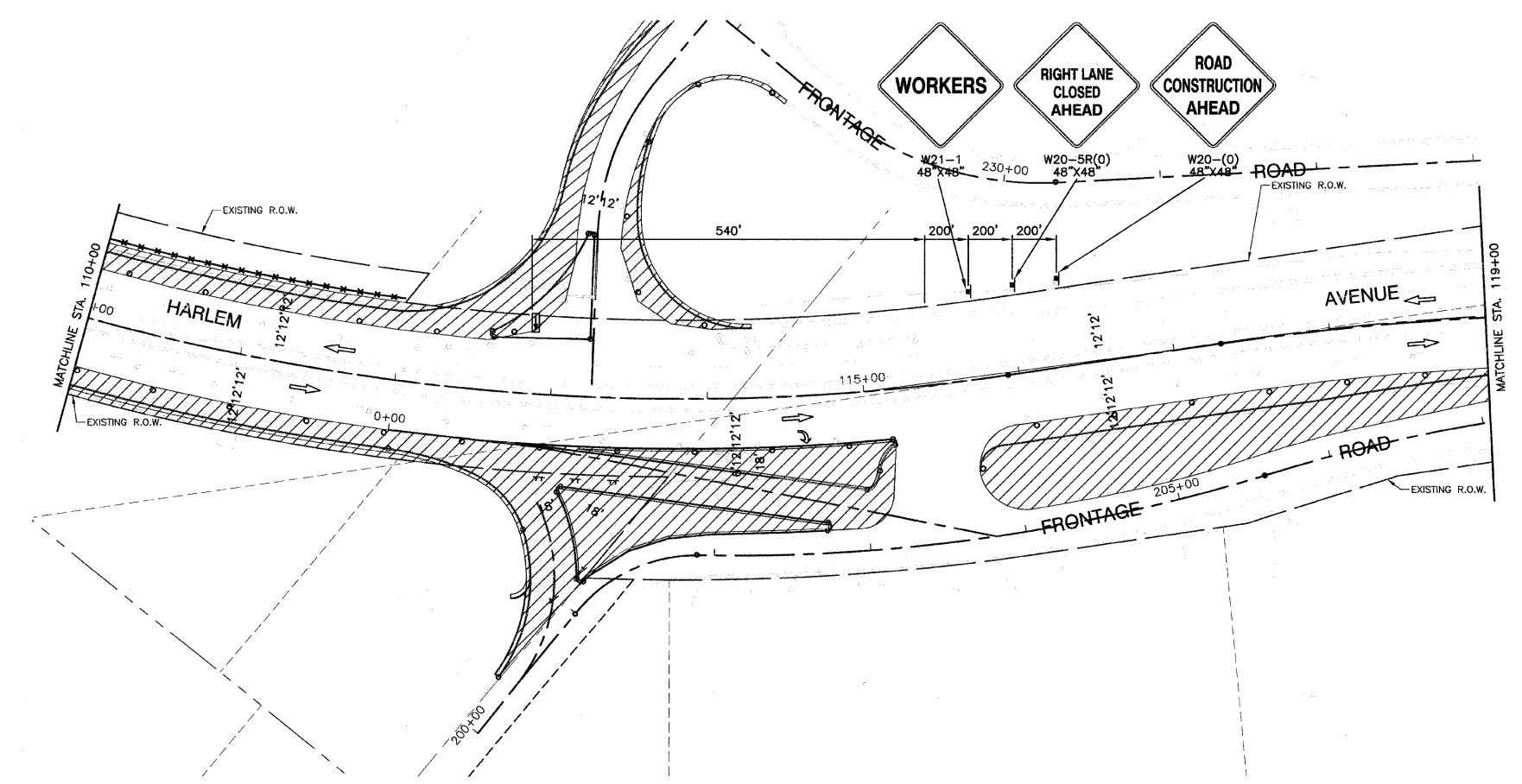
SECTION 24, TOWNSHIP 38, RANGE 12
SECTION 19, TOWNSHIP 38, RANGE 13

F. A. P. NO.	SECTION	COUNTY	TOTAL SHEETS	SHEET NO.
348	09-00059-00-CH	COOK	046	006
STA.		TO STA.		
FED. ROAD DIST. NO.		ILLINOIS	FED. AID PROJECT ARA-9003(340)	

CONTRACT #63269



LIGHTING CONTRACTOR SHALL COORDINATE WORK WITH GENERAL CONTRACTOR SO THAT ONE SIDE OF THE ROADWAY REMAINS LIT AT ALL TIMES DURING CONSTRUCTION.



- STAGING NOTES:**
1. THE WORKING AND NON-WORKING HOURS ARE DEFINED BY THE SPECIAL PROVISIONS "CONSTRUCTION RESTRICTIONS FOR LANE CLOSURES"
 2. A FLAGGER WITH TRAFFIC CONTROL SIGN IS REQUIRED FOR EACH DIRECTION IN ORDER TO ALLOW CONSTRUCTION VEHICLES TO ENTER AND LEAVE THE WORK SITE.

LEGEND

- PAVEMENT WIDENING
- WORK AREA
- TYPE I OR II BARRICADE OR DRUM WITH STEADY BURNING LIGHT (50' C-C) DURING WORKING HOURS
- SIGN
- TYPE I OR II BARRICADE OR DRUM WITH STEADY BURNING LIGHT (50' C-C) DURING NON-WORKING HOURS
- TYPE III BARRICADE WITH STEADY BURNING LIGHT
- ARROW BOARD

REVISIONS	
NAME	DATE

ILLINOIS DEPARTMENT OF TRANSPORTATION
**FAP 348 (HARLEM AVENUE)
DRIVEWAY RECONFIGURATION
SUGGESTED CONSTRUCTION STAGING
71ST STREET TO STA 119+00**

SCALE: VERT. NA
HORIZ. 1"=50'
DATE: 08-14-09
DRAWN BY: PS
CHECKED BY: RJW