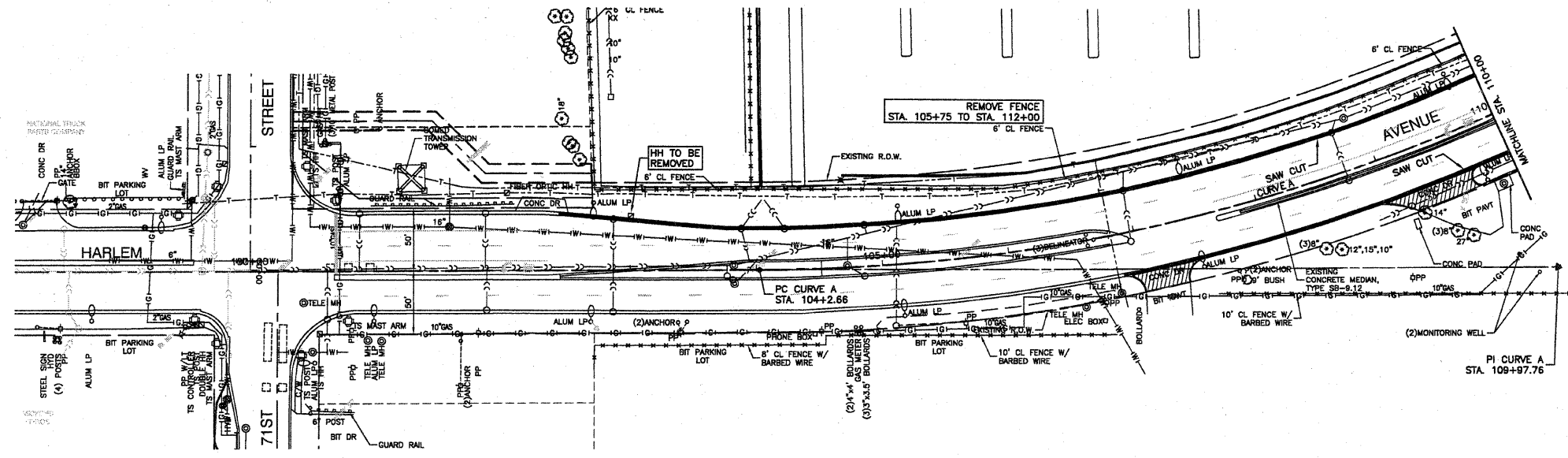
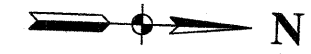


SECTION 24, TOWNSHIP 38, RANGE 12
SECTION 19, TOWNSHIP 38, RANGE 13

F. A. P. NO.	SECTION	COUNTY	TOTAL SHEETS	SHEET NO.
348	09-00058-00-CH	COOK	046	008
STA.	TO STA.			
FED. ROAD DIST. NO.	ALUMINUM	FED. RD PROJECT ARA-9003(340)		

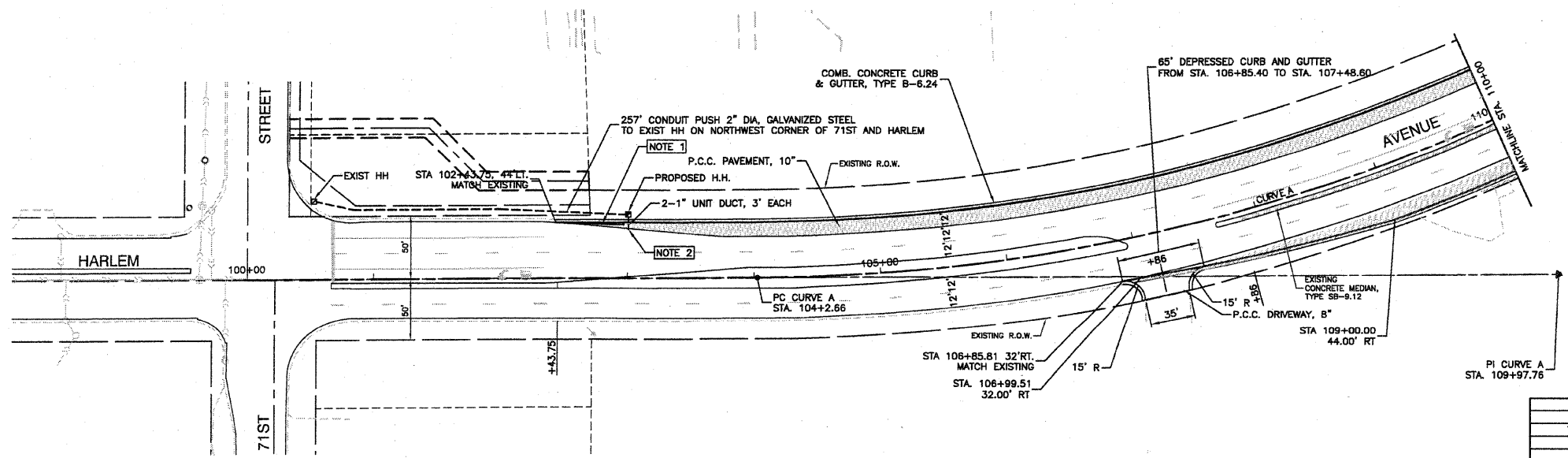
CONTRACT #63269



EXISTING CONDITIONS

NOTES:
1. WIDENING LESS THAN OR EQUAL TO 2' WILL BE POURED MONOLITHIC WITH PROPOSED COMBINATION CURB AND GUTTER, TYPE B-5.24. THE WIDENING WILL STILL BE PAID AS PORTLAND CEMENT PAVEMENT, 10".
2. 1" UNIT DUCT WILL NOT BE PAID FOR, BUT WILL BE INCIDENTAL TO THE EAST OF THE NEW HANDHOLE.

EARTHWORK SCHEDULE				
Location	Earth Excavation	Earth Excavation adjusted to Shrinkage	Embankment	Earthwork Balance Waste(+) or Shortage (-)
Sta 102+43.75 to Sta. 119+80	3764.3	2823.2	679.8	2143.4
Total				2143.4



PROPOSED IMPROVEMENT

- LEGEND**
- PAVEMENT REMOVAL
 - MEDIAN REMOVAL
 - DRIVEWAY REMOVAL
 - CURB AND GUTTER REMOVAL
 - PAVEMENT WIDENING

REVISIONS	
NAME	DATE
TRAFFIC	09/25/09

ILLINOIS DEPARTMENT OF TRANSPORTATION

FAP 348 (HARLEM AVENUE)
DRIVEWAY RECONFIGURATION
EXISTING AND PROPOSED PLAN
71ST STREET TO STA 110+00

SCALE: VERT. NA
HORIZ. 1"=50'

DATE 08-14-09

DRAWN BY PS
CHECKED BY RJW

ROBINSON ENGINEERING, LTD.
17000 SOUTH PARK AVENUE SOUTH HOLLAND, ILLINOIS 60473
708-381-8500 FAX 708-381-9885
ILLINOIS DESIGN FIRM REGISTRATION NO. 146001128 04517-PLAN-01 - P01