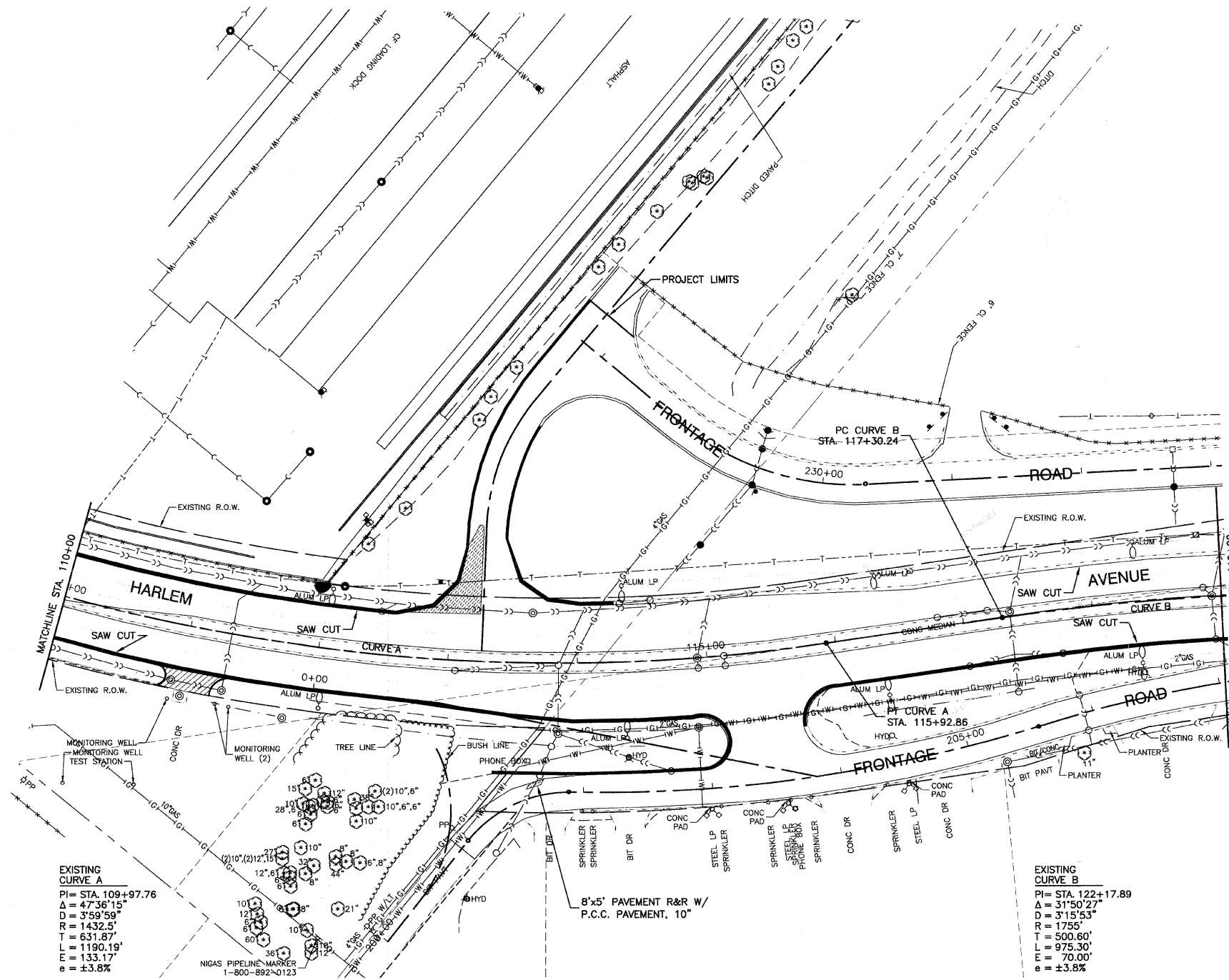
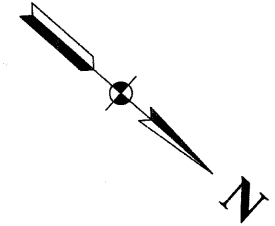


F. A. P. NO.	SECTION	COUNTY	TOTAL SHEETS	SHEET NO.
348	09-00059-00-CH	COOK	046	009
STA.		TO STA.		
FED. ROAD DIST. NO.		ILLINOIS	FED. AID PROJECT ARA-9003(340)	

CONTRACT #63269



EXISTING CURVE A  
 PI= STA. 109+97.76  
 $\Delta = 47^{\circ}36'15''$   
 $D = 3^{\circ}59'59''$   
 $R = 1432.5'$   
 $T = 631.87'$   
 $L = 1190.19'$   
 $E = 133.17'$   
 $e = \pm 3.8\%$

EXISTING CURVE B  
 PI= STA. 122+17.89  
 $\Delta = 31^{\circ}50'27''$   
 $D = 3^{\circ}15'53''$   
 $R = 1755'$   
 $T = 500.60'$   
 $L = 975.30'$   
 $E = 70.00'$   
 $e = \pm 3.8\%$

NOTES:  
 1. WIDENING LESS THAN OR EQUAL TO 2' WILL BE POURED MONOLITHIC WITH PROPOSED COMBINATION CURB AND GUTTER, TYPE B-6.24. THE WIDENING WILL STILL BE PAID AS PORTLAND CEMENT PAVEMENT, 10".

LEGEND

- PAVEMENT REMOVAL
- MEDIAN REMOVAL
- DRIVEWAY REMOVAL
- CURB AND GUTTER REMOVAL

REVISIONS	
NAME	DATE

ILLINOIS DEPARTMENT OF TRANSPORTATION

FAP 348 (HARLEM AVENUE)  
 DRIVEWAY RECONFIGURATION  
 EXISTING PLAN  
 STA 110+00 TO STA 119+00

SCALE: VERT. NA  
 HORIZ. 1"=50'

DATE: 08-14-09

DRAWN BY: PS  
 CHECKED BY: RJW