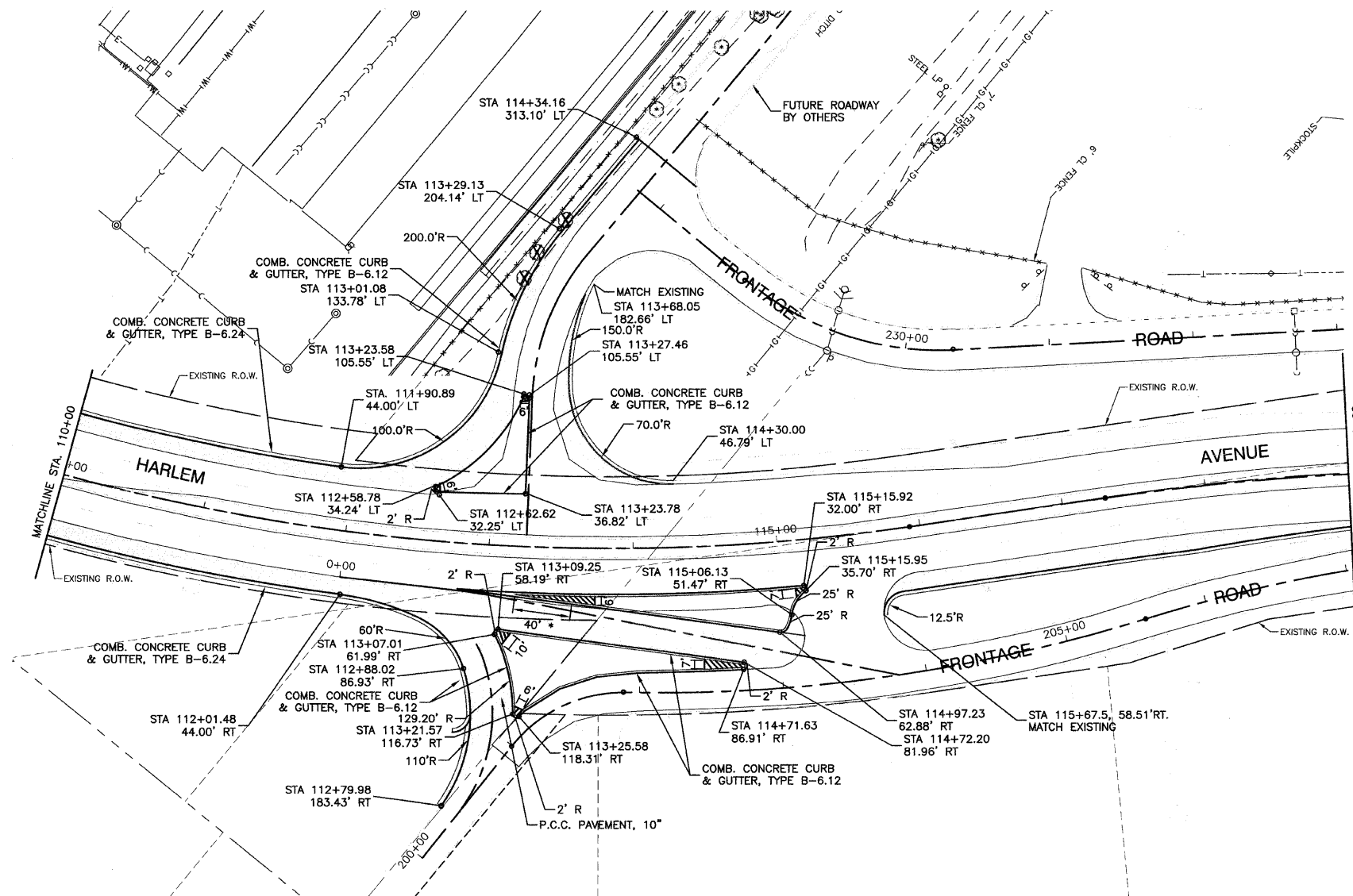
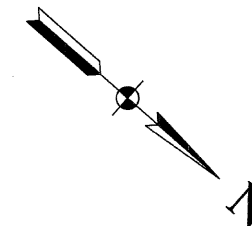


F. A. P. NO.	SECTION	COUNTY	TOTAL SHEETS	SHEET NO.
348	09-00059-00-CH	COOK	046	010
STA.	TO STA.			
FED. ROAD DIST. NO.	ILLINOIS	FED. AID PROJECT	ARA-9003(340)	

CONTRACT #63269

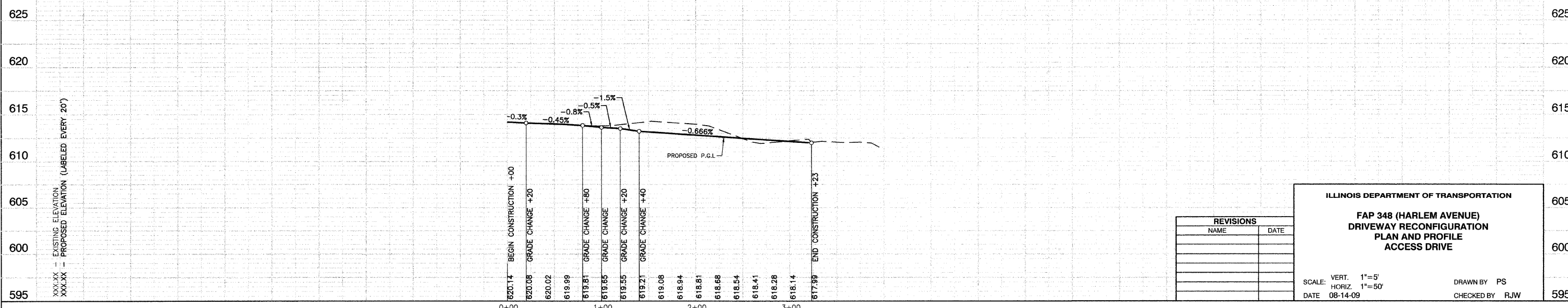


NOTES:
 1. WIDENING LESS THAN OR EQUAL TO 2' WILL BE POURED MONOLITHIC WITH PROPOSED COMBINATION CURB AND GUTTER, TYPE B-6.24. THE WIDENING WILL STILL BE PAID AS PORTLAND CEMENT PAVEMENT, 10\"

LEGEND

- PAVEMENT WIDENING
- STAMPED CONCRETE MEDIAN SURFACE, 5" AND COLORED SURFACE

* - COMBINATION CONCRETE CURB AND GUTTER, B-6.12, (SPECIAL) (9" MAX TO 6" MIN)



REVISIONS	
NAME	DATE

ILLINOIS DEPARTMENT OF TRANSPORTATION

**FAP 348 (HARLEM AVENUE)
 DRIVEWAY RECONFIGURATION
 PLAN AND PROFILE
 ACCESS DRIVE**

SCALE: VERT. 1"=5'
 HORIZ. 1"=50'

DATE 08-14-09

DRAWN BY PS
 CHECKED BY RJW