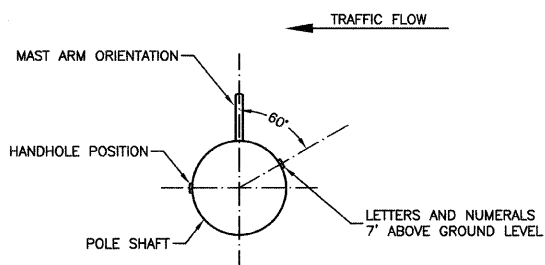
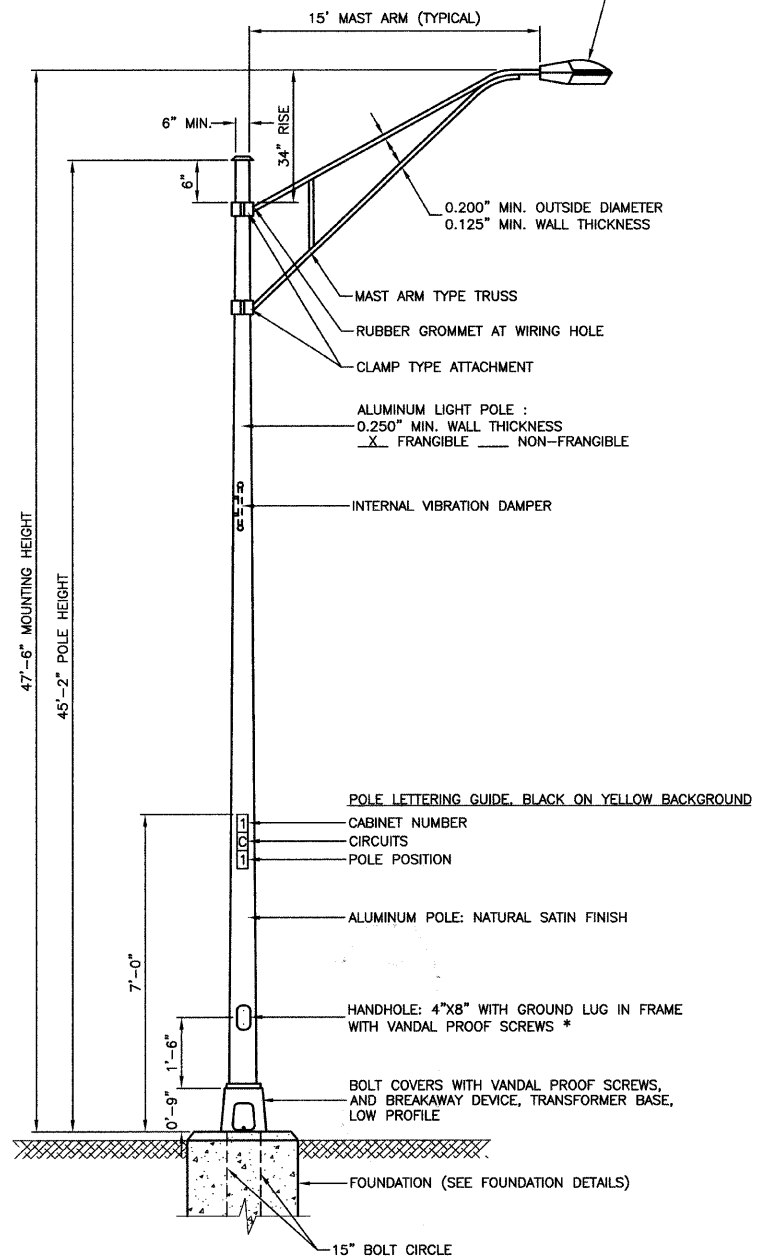


F. A. P. SHEET	SECTION	COUNTY	TOTAL SHEETS	SHEET NO.
348	09-00059-00-CH	COOK	046	020
STA.	TO STA.			
FED. ROAD DIST. NO.	ILLINOIS	FED. AID PROJECT	ARA-9003(340)	

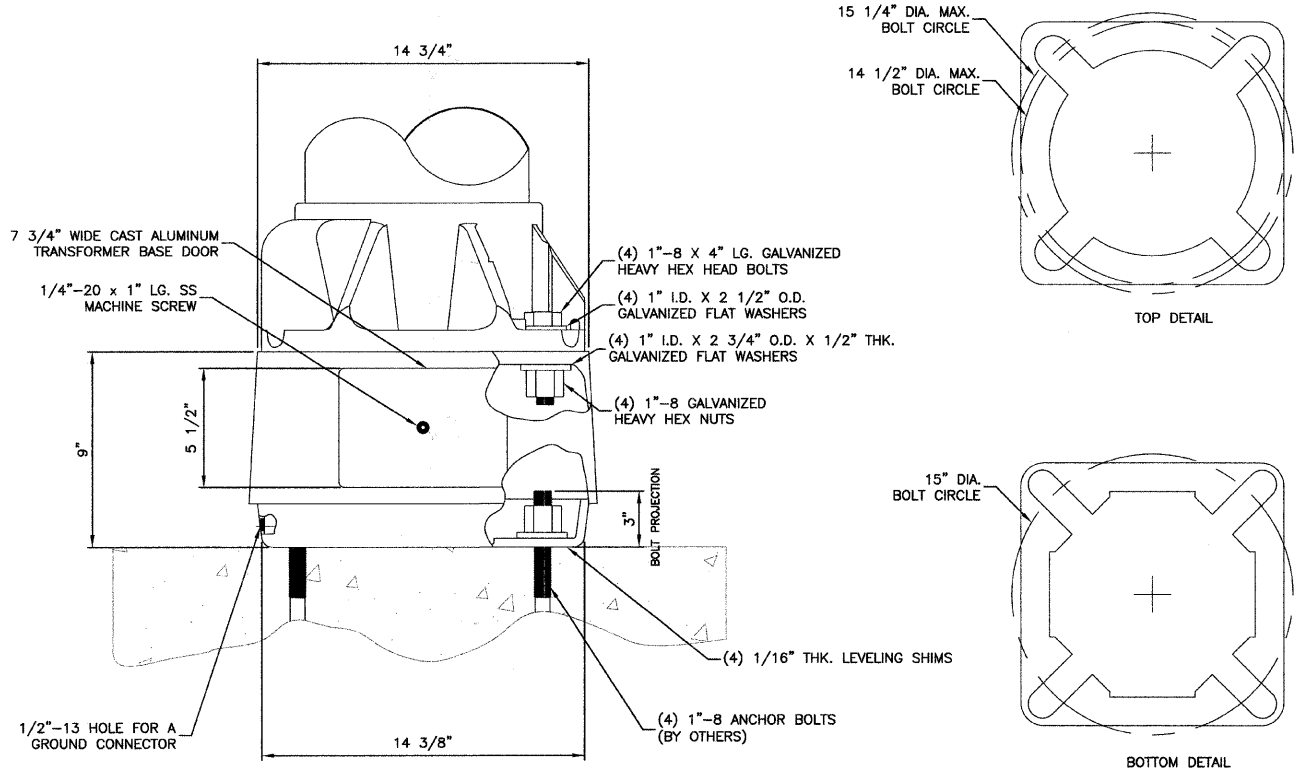
CONTRACT #63269

LUMINAIRE:
 400 WATT HIGH PRESSURE SODIUM LAMP
 240 VOLT BALLAST
 I.E.S. TYPE: MC III LIGHT DISTRIBUTION
 LENS TYPE: FLAT
 CUTOFF TYPE: FULL
 INITIAL LAMP LUMENS: 51,000
 LAMP LIFE: 24,000 HOURS



POSITION OF HANDHOLE AND NUMERALS ON POLE

IMPORTANT NOTE:
 TRANSFORMER BASE AND LIGHTPOLE TO BE LEVELED AS ONE UNIT. USING LEVELING SHIMS IF REQUIRED.



BREAKAWAY TRANSFORMER BASE DETAIL

- NOTES:**
- THE LIGHTING UNITS SHALL MEET AASHTO DESIGN CRITERIA. DESIGN FOR 90 M.P.H. WIND WITH 30% GUST AND 75 POUND LUMINAIRE HAVING AN E.P.A. OF 1.6 SQ. FT. AND PROPER ICE LOADING.
 - ALUMINUM ALLOY 6063-T6 SHALL BE USED.

* - BUTTON HEAD SOCKET SET SCREW TYPE OF SCREWS PREFERRED FOR THIS APPLICATION

TYPICAL POLE INSTALLATION (47'-6" MH)

FOR RELOCATED EXISTING POLES
 FOR DETAILS SEE RECORD DRAWINGS OF CONTRACT # 36672

REVISIONS	
NAME	DATE

ILLINOIS DEPARTMENT OF TRANSPORTATION
**FAP 348 (HARLEM AVENUE)
 DRIVEWAY RECONFIGURATION
 STREET LIGHTING
 LIGHTING DETAILS**

SCALE: VERT. NA
 HORIZ. NA
 DATE 08-14-09

DRAWN BY PS
 CHECKED BY RJW / PAP