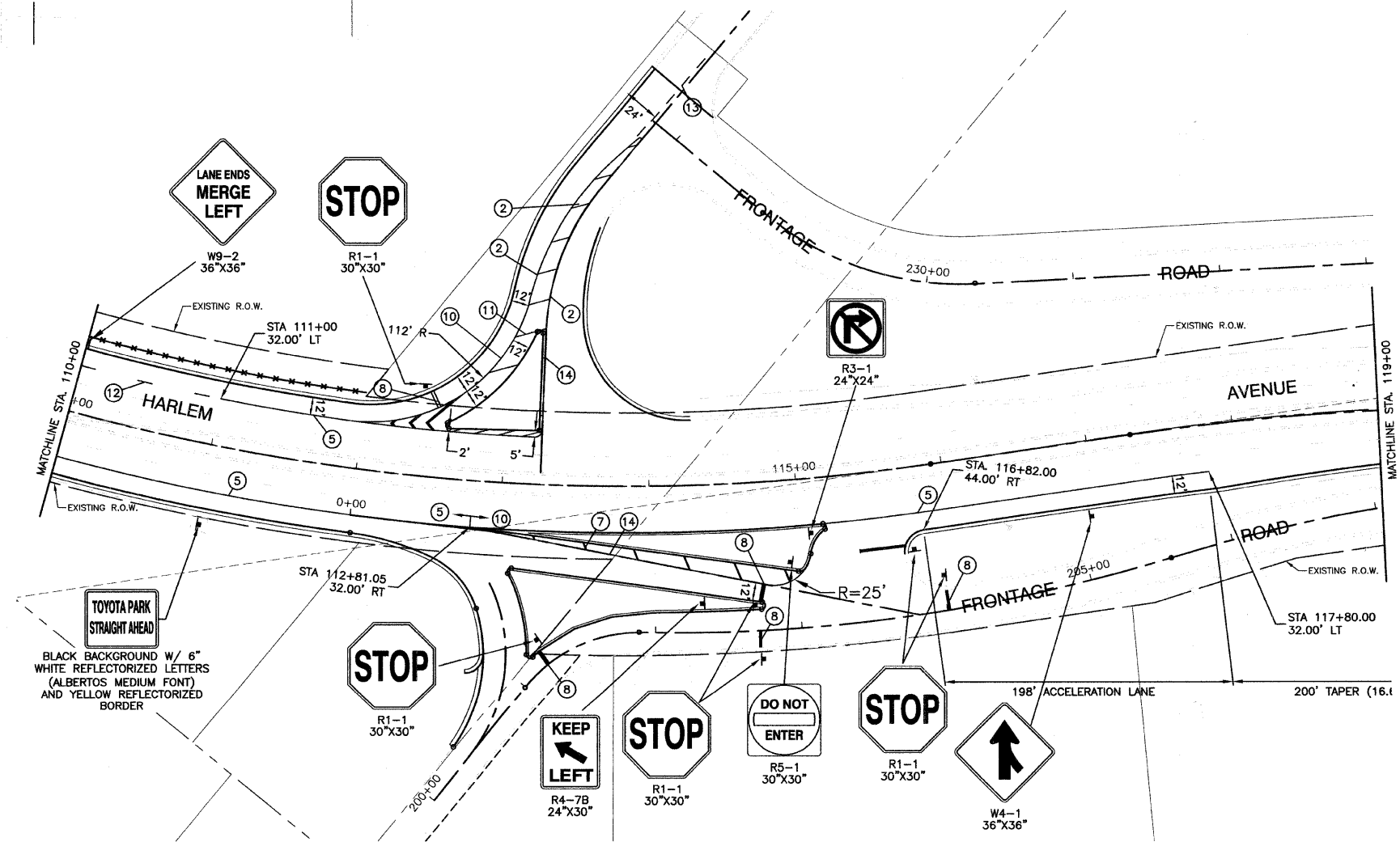
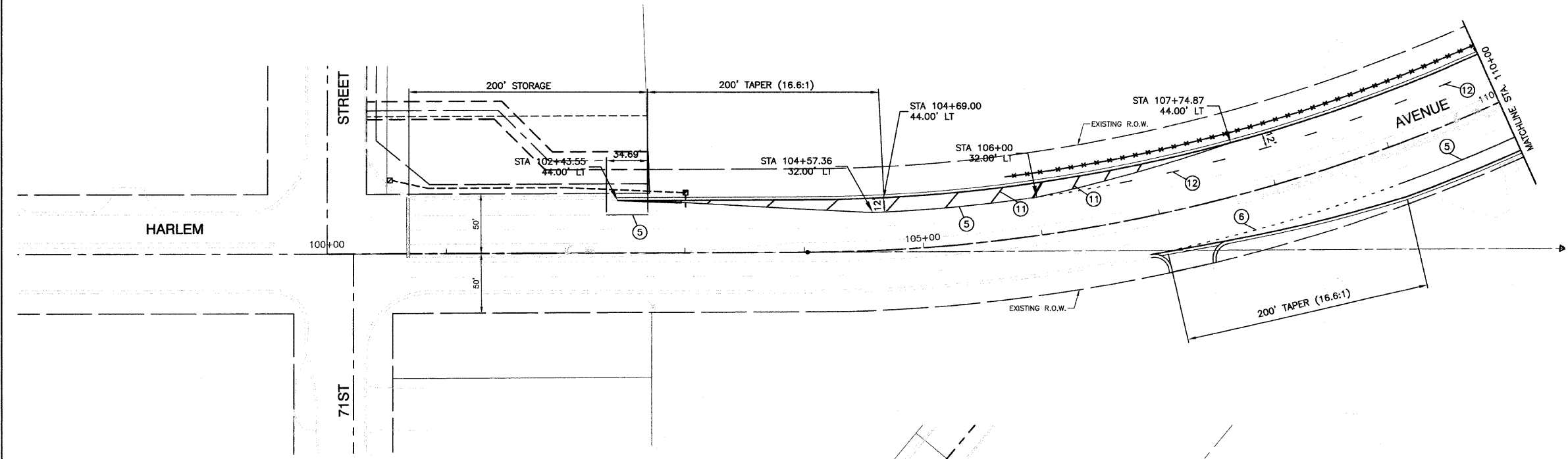
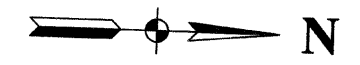


F. A. P. SHEET	SECTION	COUNTY	TOTAL SHEETS	SHEET NO.
348	09-00059-00-CH	COOK	046	024
STA.	TO STA.			
FED. ROAD DIST. NO.	ILLINOIS	FED. AID PROJECT	ARA-9003(340)	

CONTRACT #63269



PAVEMENT MARKING LEGEND

- ① WHITE LETTERS & SYMBOLS
- ② DOUBLE 4" YELLOW CENTERLINE (11" C/C)
- ③ DOUBLE YELLOW MEDIUM OUTLINE (11" C/C)
- ④ 4" WHITE EDGE LINE
- ⑤ 6" WHITE LANE LINE
- ⑥ 6" WHITE SKIP-DASH LINE (2' LINE - 6' SPACE)
- ⑦ 12" YELLOW DIAGONAL LINE (20' C/C)
- ⑧ 24" WHITE STOP BAR
- ⑨ 6" WHITE CROSSWALK (6' C/C)
- ⑩ 8" WHITE SOLID LINE
- ⑪ 12" WHITE LINE (45° ANGLE, 50' C/C)
- ⑫ 4" WHITE SKIP - DASH LINE (10' LINE - 30' SPACE)
- ⑬ 4" YELLOW SKIP - DASH LINE (10' LINE - 30' SPACE)
- ⑭ 4" YELLOW
- ◀ ONE-WAY AMBER MARKER
40' C/C UNLESS OTHERWISE INDICATED
- ◀ ONE-WAY CRYSTAL MARKER
80' C/C UNLESS OTHERWISE INDICATED
- ↔ TWO-WAY AMBER MARKER
40' C/C UNLESS OTHERWISE INDICATED
- ⊠ TRAFFIC SIGN

TOYOTA PARK
STRAIGHT AHEAD
BLACK BACKGROUND W/ 6"
WHITE REFLECTORIZED LETTERS
(ALBERTOS MEDIUM FONT)
AND YELLOW REFLECTORIZED
BORDER

REVISIONS	
NAME	DATE

ILLINOIS DEPARTMENT OF TRANSPORTATION
**FAP 348 (HARLEM AVENUE)
DRIVEWAY RECONFIGURATION
PAVEMENT MARKING & SIGNING
71ST STREET TO STA 119+00**

SCALE: VERT. NA
HORIZ. 1"=50'
DATE: 08-14-09
DRAWN BY: PS
CHECKED BY: RJW