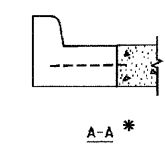
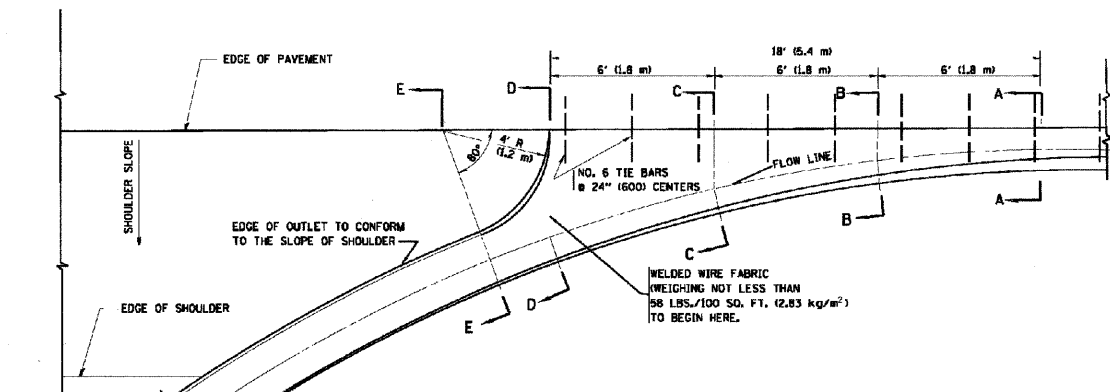
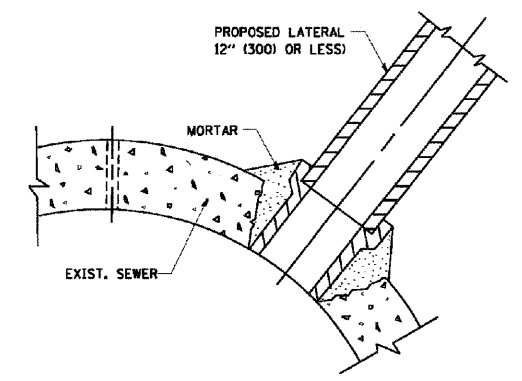


F. A. P. NO.	SECTION	COUNTY	TOTAL SHEETS	SHEET NO.
348	09-00059-00-CH	COOK	046	027
STA.	TO STA.			
FED. ROAD DIST. NO.	ILLINOIS	FED. AID PROJECT	ARA-9003(340)	

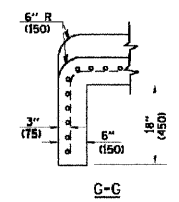
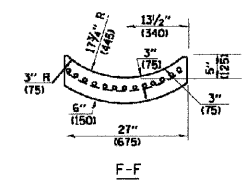
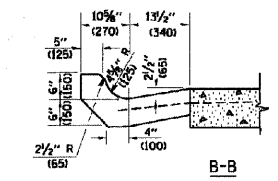
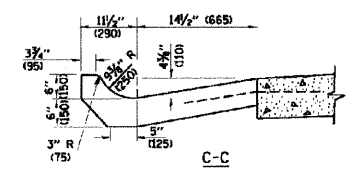
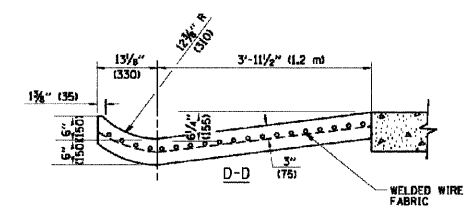
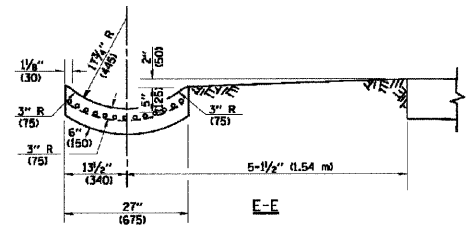
CONTRACT #63269



\* DIMENSIONS OF THE CURB & GUTTER AT SECTION A-A ARE SHOWN ON STATE STANDARD 60600. FOR DETAILS OF OUTLET FOR CONCRETE CURB & GUTTER, TYPE B-6.24 (B-15.6D) SEE STATE STANDARD 606006.



DETAIL "C"  
PROPOSED LATERAL SEWER CONNECTION TO EXISTING SEWER OF 30" (750) OR LARGER



**GENERAL NOTES**

GUTTER OUTLET SHALL BE TIED TO THE PAVEMENT IN ACCORDANCE WITH DETAILS FOR LONGITUDINAL CONSTRUCTION JOINT SHOWN ON STANDARD 420001.

TIE BARS SHALL BE NO. 20 (NO.6) AT 24" (600) CENTERS UNLESS OTHERWISE SHOWN.

IF THE AVERAGE GRADE OF PAVEMENT FOR THE DISTANCE FROM SECTION A-A TO D-D EXCEEDS 2%, THIS DISTANCE SHALL BE INCREASED 6' (1.8 m) FOR EACH 1% INCREASE IN GRADE.

**QUANTITIES**

FOR SECTION A-A TO E-E AND CURTAIN WALL:  
1.25 CU. YDS. (0.96 m<sup>3</sup>) CLASS SI CONCRETE (OUTLET) FOR 9" (225) PAV'T.  
1.27 CU. YDS. (0.96 m<sup>3</sup>) CLASS SI CONCRETE (OUTLET) FOR 10" (250) PAV'T.  
FOR SECTION F-F:  
0.045 CU. YDS. (0.03 m<sup>3</sup>) CLASS SI CONCRETE PER FT. (M).

**OUTLET FOR CONCRETE CURB AND GUTTER**

REVISIONS	
NAME	DATE

ILLINOIS DEPARTMENT OF TRANSPORTATION

**FAP 348 (HARLEM AVENUE)  
DRIVEWAY RECONFIGURATION  
CONSTRUCTION DETAILS**

SCALE: VERT. NA  
HORIZ. NA  
DATE: 08-14-09

DRAWN BY: PS  
CHECKED BY: RJW