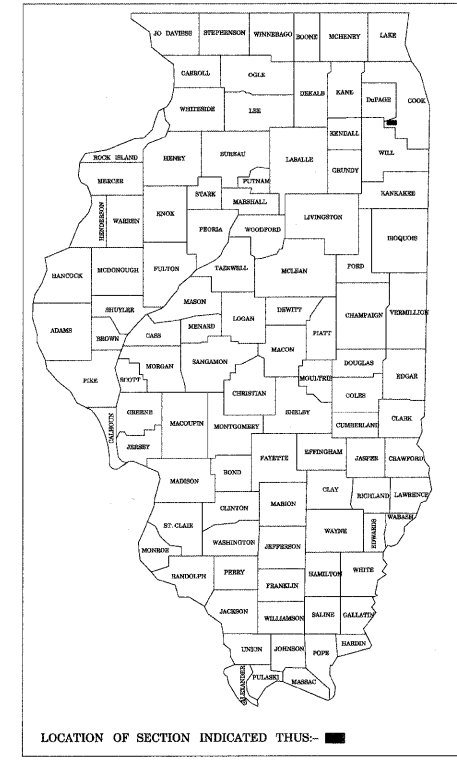


FAU RTE	SECTION	COUNTY	TOTAL SHEETS	SHEET NO.
1591	09-00046-00-TL	COOK	17	1
F.H.W.A. REG.	ILLINOIS PROJECT	ARA-9003(377)	CONTRACT NO. 63273	

# STATE OF ILLINOIS DEPARTMENT OF TRANSPORTATION DIVISION OF HIGHWAYS PLANS FOR PROPOSED FEDERAL AID HIGHWAY

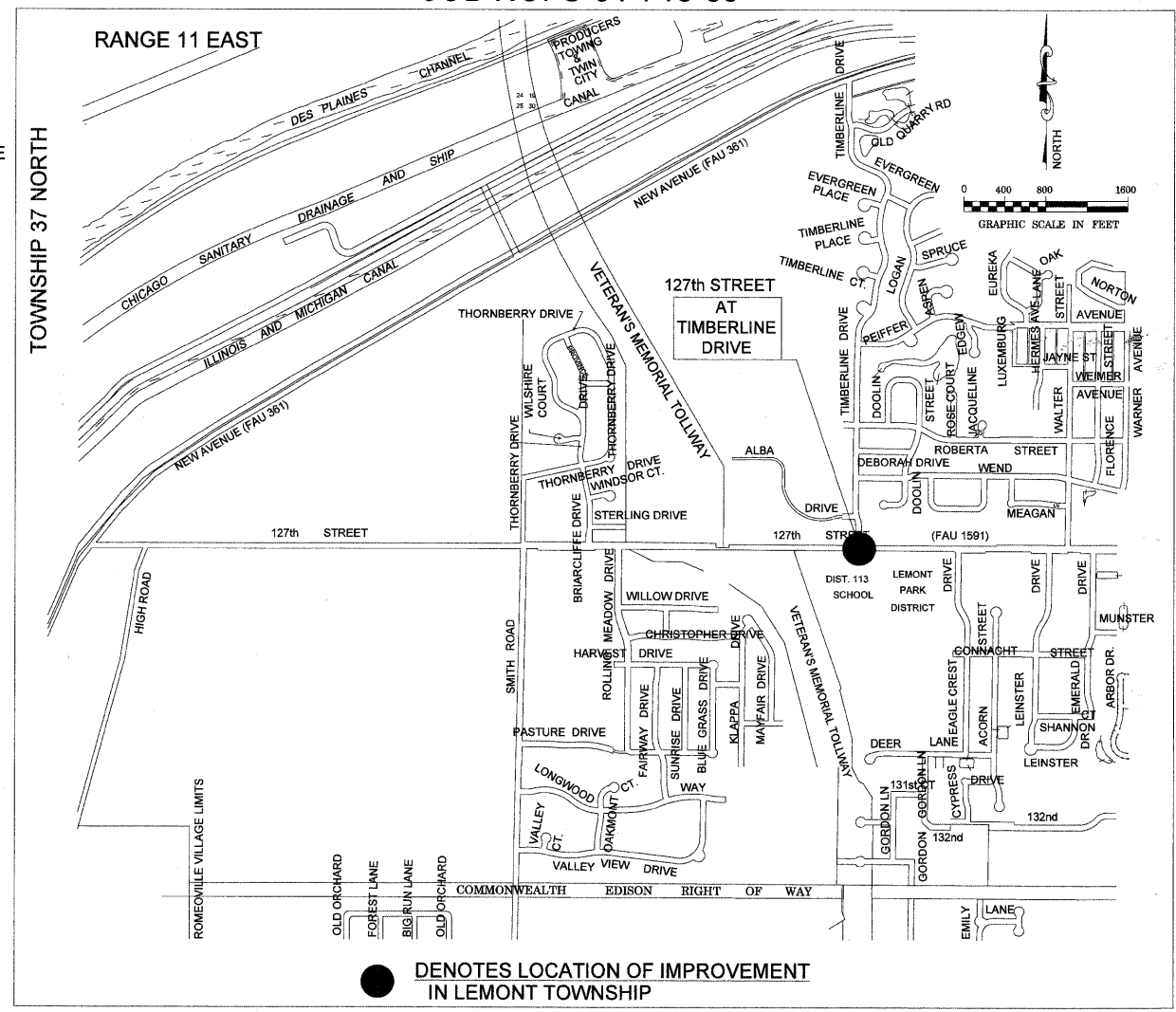
127th STREET (FAU ROUTE 1591)  
127th STREET AT TIMBERLINE DRIVE  
TRAFFIC SIGNAL IMPROVEMENTS  
FEDERAL PROJECT ARA-9003(377)  
SECTION NO. 09-00046-00-TL  
VILLAGE OF LEMONT  
COOK COUNTY  
JOB NO. C-91-718-09

- INDEX TO SHEETS**
- 1.) COVER SHEET, INDEX OF SHEETS, LOCATION MAP, INDEX OF STATE STANDARDS
  - 2.) SUMMARY OF QUANTITIES
  - 3.) TRAFFIC SIGNAL INSTALLATION PLAN
  - 4.) TRAFFIC SIGNAL CABLE PLAN, PHASE DESIGNATION DIAGRAM, EMERGENCY VEHICLE PREEMPTION SEQUENCE & SCHEDULE OF QUANTITIES
  - 5.) INTERCONNECT PLANS
  - 6.) INTERCONNECT SCHEMATIC
  - 7.) PAVEMENT MARKING AND SOLAR POWERED SCHOOL FLASHERS INSTALLATION PLAN
  - 8.) MAST ARM MOUNTED STREET NAME SIGNS
  - 9.-12.) STANDARD TRAFFIC SIGNAL DESIGN DETAILS
  - 13.) DISTRICT ONE TYPICAL PAVEMENT MARKINGS
  - 14.) PAVEMENT MARKING LETTERS AND SYMBOLS FOR TRAFFIC STAGING
  - 15.) TRAFFIC CONTROL AND PROTECTION FOR SIDEROADS, INTERSECTIONS, AND DRIVEWAYS
  - 16.) SIGNING FOR FLAGGING OPERATION AT WORK ZONE OPENINGS
  - 17.) SOLAR POWERED SCHOOL FLASHERS DETAIL



**STATE STANDARDS**

000001-05	STANDARD SYMBOLS, ABBREVIATIONS, AND PATTERNS
424001-05	CURB RAMPS FOR SIDEWALK
701301-03	LANE CLOSURE, 2 L, 2 W, SHORT TIME OPERATIONS
701501-05	URBAN LANE CLOSURE, 2 L, 2 W UNDIVIDED
701502-03	URBAN LANE CLOSURE, 2 L, 2 W & BIDIRECTIONAL LEFT TURN LANE
701801-04	LANE CLOSURE MULTILANE 1W OR 2W CROSSWALK OR SIDEWALK CLOSURE
701901-01	TRAFFIC CONTROL DEVICES
720001-01	SIGN PANEL MOUNT DETAILS
780001-02	TYPICAL PAVEMENT MARKINGS
814001-02	HANDHOLES
814006-02	DOUBLE HANDHOLES
857001-01	STANDARD PHASE DESIGNATION DIAGRAMS & PHASE SEQUENCE
862001-01	UPS
877001-04	STEEL MAST ARM ASSEMBLY & POLE 16'-55'
878001-07	CONCRETE FOUNDATION DETAILS
880006-01	TRAFFIC SIGNAL MOUNT DETAILS - POST & BRACKET MOUNT
886001-01	DETECTOR LOOP INSTALLATIONS
886006-01	TYPICAL LAYOUTS FOR DETECTION LOOPS



STATE OF ILLINOIS  
DEPARTMENT OF TRANSPORTATION  
DIVISION OF HIGHWAYS

APPROVED 8-21 20 09

VILLAGE PRESIDENT [Signature]

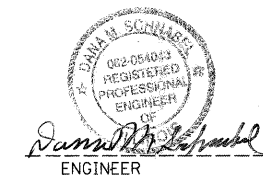
PASSED August 31, 2009  
[Signature]  
DISTRICT #1 ENGINEER OF LOCAL ROADS & STREETS

RELEASING FOR BID  
BASED ON LIMITED  
REVIEW SEPTEMBER 1, 2009  
[Signature]  
DEPUTY DIRECTOR OF HIGHWAYS, REGION #1 ENGINEER

PROJECT LOCATED IN THE  
VILLAGE OF LEMONT

PRINTED BY THE AUTHORITY  
OF THE STATE OF ILLINOIS

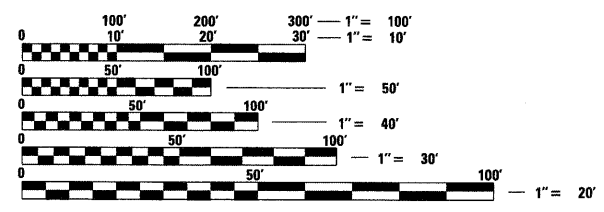
TRAFFIC DATA:  
ADT (2009): 8,500  
ADT (2030): 12,000  
POSTED SPEED LIMIT = 35 MPH  
DESIGN SPEED LIMIT = 40 MPH



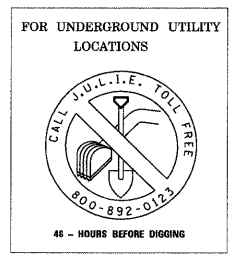
DANA M. SCHNABEL  
ILLINOIS REGISTRATION No. 062-054043  
EXPIRATION DATE: 11-30-2009  
PROFESSIONAL DESIGN FIRM No.: 184-001747



FIELD ENGINEER: MELCHOR MANGOBA (847)705-4408  
CONSULTANT: KENIG, LINDGREN, O'HARA, ABOONA, INC. (847) 518-9990



FULL SIZE PLANS HAVE BEEN PREPARED USING STANDARD ENGINEERING SCALES. REDUCED SIZED PLANS WILL NOT CONFORM TO STANDARD SCALES. IN MAKING MEASUREMENTS ON REDUCED PLANS, THE ABOVE SCALES MAY BE USED.



CONTRACT NO. 63273

REVISIONS			
NO.	BY	DATE	DESCRIPTION

**LOCATION MAP**

**LENGTH OF PROJECT**

GROSS LENGTH OF PROJECT	0 FEET (0 MILES)
NET LENGTH OF PROJECT	0 FEET (0 MILES)