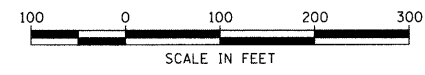
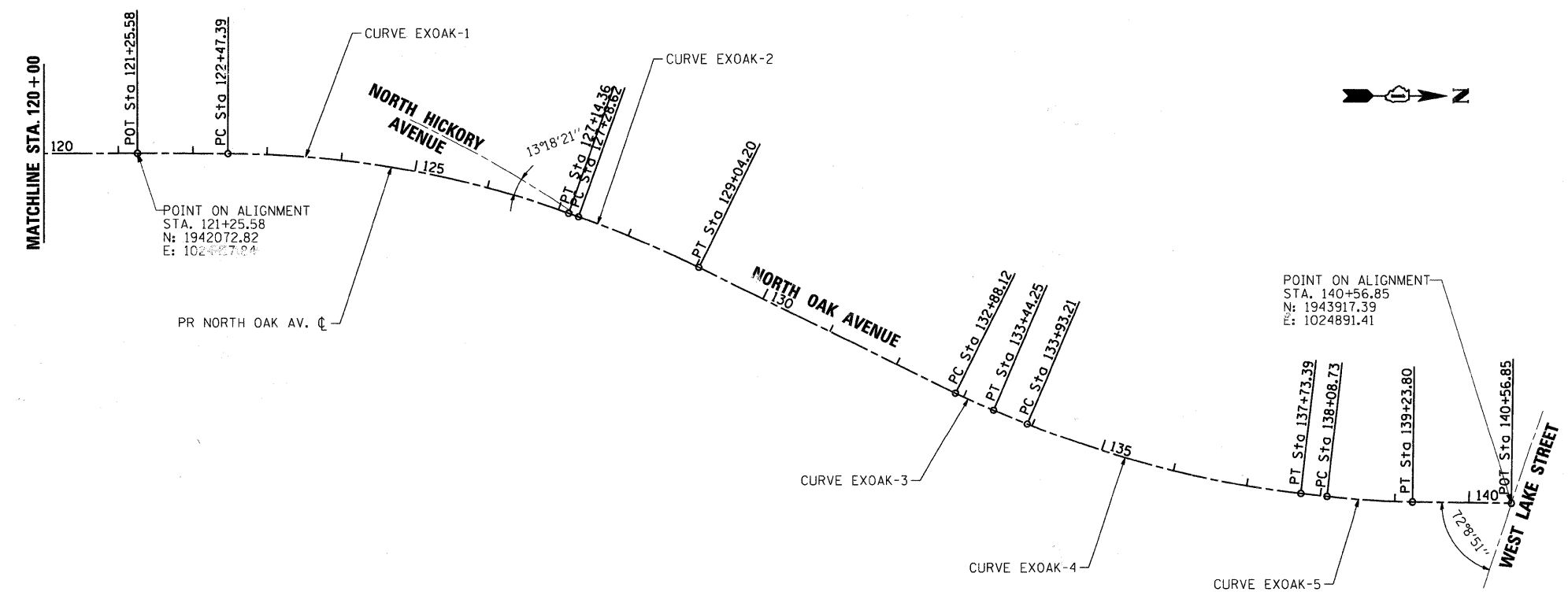


PROP. CURVE EXOAK-1	PROP. CURVE EXOAK-2	PROP. CURVE EXOAK-3	PROP. CURVE EXOAK-4	PROP. CURVE EXOAK-5
$\Delta = 19^\circ 35' 46''$ (RT)	$\Delta = 6^\circ 36' 48''$ (RT)	$\Delta = 3^\circ 25' 59''$ (LT)	$\Delta = 16^\circ 32' 17''$ (LT)	$\Delta = 5^\circ 38' 22''$ (LT)
D = $4^\circ 11' 47''$	D = $3^\circ 46' 00''$	D = $6^\circ 06' 55''$	D = $4^\circ 21' 00''$	D = $4^\circ 54' 03''$
R = 1,365.33'	R = 1,521.14'	R = 936.93'	R = 1,317.15'	R = 1,169.09'
T = 235.79'	T = 87.88'	T = 28.08'	T = 191.42'	T = 57.58'
L = 466.96'	L = 175.57'	L = 56.14'	L = 380.18'	L = 115.07'
E = 20.21'	E = 2.54'	E = 0.42'	E = 13.84'	E = 1.42'
e = N/A	e = N/A	e = N/A	e = N/A	e = N/A
T.R. = N/A	T.R. = N/A	T.R. = N/A	T.R. = N/A	T.R. = N/A
S.E. RUN = N/A	S.E. RUN = N/A	S.E. RUN = N/A	S.E. RUN = N/A	S.E. RUN = N/A
P.C. STA. = 122+47.39	P.C. STA. = 127+28.62	P.C. STA. = 132+88.12	P.C. STA. = 133+93.21	P.C. STA. = 138+08.73
N: 1,942,194.64	N: 1,942,665.86	N: 1,943,267.77	N: 1,943,267.77	N: 1,943,669.55
E: 1,024,418.02	E: 1,024,502.55	E: 1,024,783.49	E: 1,024,783.49	E: 1,024,882.81
PI STA. = 124+83.18	PI STA. = 128+16.51	PI STA. = 133+16.19	PI STA. = 135+84.63	PI STA. = 138+66.32
N: 1,942,429.58	N: 1,942,744.12	N: 1,943,456.78	N: 1,943,456.78	N: 1,943,734.66
E: 1,024,414.33	E: 1,024,530.54	E: 1,024,863.16	E: 1,024,863.16	E: 1,024,889.24
P.T. STA. = 127+14.36	P.T. STA. = 129+04.20	P.T. STA. = 133+44.25	P.T. STA. = 137+73.39	P.T. STA. = 139+23.80
N: 1,942,652.44	N: 1,942,827.41	N: 1,943,222.66	N: 1,943,634.42	N: 1,943,784.36
E: 1,024,497.75	E: 1,024,571.07	E: 1,024,764.47	E: 1,024,878.92	E: 1,024,889.83



COMPANY NAME: SEC GROUP, INC.
 PROJECT CONTACT: J. MELHUISH
 CLIENT: VILLAGE OF BARTLETT
 DATE PLOTTED: 8/21/2009 4:25:34 PM
 FILE NAME: 090196-11e-01.dgn
 PLOT SCALE: 1" = 100'
 PLOT DATE: 8/31/2009



USER NAME = jmelhuish	DESIGNED - J. ATTANASEO	REVISED -
FILE NAME = 090196-11e-01.dgn	DRAWN -	REVISED -
PLOT SCALE = 1" = 100'	CHECKED - T. HAMILTON	REVISED -
PLOT DATE = 8/31/2009	DATE - 8/3/09	REVISED -

STATE OF ILLINOIS
DEPARTMENT OF TRANSPORTATION

ALIGNMENT, TIES AND BENCHMARKS	
NORTH OAK AVENUE	
SCALE: 1" = 100'	SHEET NO. 1 OF 1 SHEETS
STA.	TO STA.

F.A.U. RTE. 2537	SECTION 09-00084-00-RS	COUNTY COOK	TOTAL SHEETS 53	SHEET NO. 7
CONTRACT NO. 63274			ILLINOIS FED. AID PROJECT ARA-9003 (345)	