

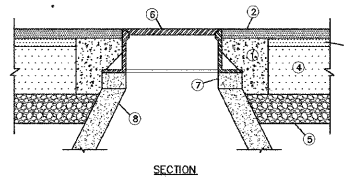
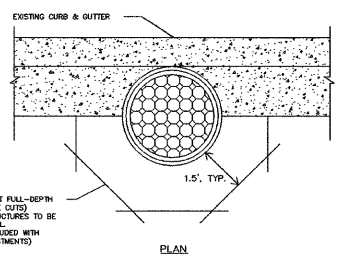
**STANDARD SYMBOLS AND ABBREVIATIONS**  
THESE SYMBOLS AND ABBREVIATIONS ARE USED THROUGHOUT THESE PLANS UNLESS OTHERWISE NOTED

SYMBOLS	
—	BASE OR SURVEY LINE
- - -	CENTERLINE
+	SUMMIT
—/—	GRADE CHANGE
	HEDGE
—	EXISTING SEWER
- - -	PROPOSED SEWER
—	EXISTING INLET, INLET TO BE ADJUSTED OR INLET TO BE RECONSTRUCTED
—	INLET TO BE CONSTRUCTED
—	INLET TO BE FILLED WITH SAND AND CONNECTION SEALD
—	EXISTING WATER MAIN
- - -	PROPOSED WATER MAIN
—	EXISTING VALVE VAULT, VALVE VAULT TO BE ADJUSTED OR VALVE VAULT TO BE RECONSTRUCTED
—	VALVE VAULT TO BE CONSTRUCTED
—	VALVE VAULT TO BE FILLED WITH SAND AND CONNECTION SEALD
—	EXISTING LIGHT STANDARD OR LIGHT STANDARD TO BE ADJUSTED
—	LIGHT STANDARD TO BE CONSTRUCTED
—	LIGHT STANDARD TO BE MOVED (SYMBOL WITH LETTER INDICATES NEW LOCATION)
—	EXISTING HANDHOLE OR HANDHOLE TO BE ADJUSTED
—	HANDHOLE TO BE CONSTRUCTED
—	HANDHOLE TO BE ABANDONED
—	POWER LINE POLE
—	AMERITECH TELEPHONE CO.
—	COMMONWEALTH EDISON CO.
—	NORTHERN ILLINOIS GAS
(50.00)	EXISTING ELEVATION
650.50	PROPOSED ELEVATION
(Tree Symbol)	DECIDUOUS TREES
(Tree Symbol)	EVERGREEN TREES
(Circle with X)	EXISTING CATCH BASIN, CATCH BASIN TO BE ADJUSTED OR CB TO BE RECONSTRUCTED
(Circle with dot)	CATCH BASIN TO BE CONSTRUCTED
(Circle with X and dot)	CATCH BASIN TO BE FILLED WITH SAND AND CONNECTION SEALD
(Circle with dot and X)	EXISTING MANHOLE, MANHOLE TO BE ADJUSTED OR MH TO BE RECONSTRUCTED
(Circle with dot)	MANHOLE TO BE CONSTRUCTED
(Circle with X and dot)	MANHOLE TO BE FILLED WITH SAND AND CONNECTION SEALD
(Circle with dot and X)	EXISTING FIRE HYDRANT OR FIRE HYDRANT TO BE MOVED
(Circle with dot)	FIRE HYDRANT TO BE CONSTRUCTED
(Circle with X and dot)	FIRE HYDRANT AND AUXILIARY VALE TO BE MOVED (SYMBOL WITH LETTER INDICATES NEW LOCATION)
(Circle with dot and X)	EXISTING TRAFFIC SIGNAL OR TRAFFIC SIGNAL TO BE ADJUSTED
(Circle with dot)	TRAFFIC SIGNAL TO BE CONSTRUCTED
(Circle with X and dot)	TRAFFIC SIGNAL STANDARD TO BE MOVED (SYMBOL WITH LETTER INDICATES NEW LOCATION)
(Circle with dot and X)	EXISTING TRAFFIC SIGNAL CONTROLLER OR TRAFFIC CONTROLLER TO BE ADJUSTED
(Circle with dot)	TRAFFIC CONTROLLER TO BE CONSTRUCTED
(Circle with X and dot)	TRAFFIC CONTROLLER TO BE MOVED (SYMBOL WITH LETTER INDICATES NEW LOCATION)
(R)	CONSTRUCT RAMP SIDEWALK FOR THE HANDICAPPED. SIDEWALK SHALL BE GIVEN ROUGH BROOM FINISH AS DIRECTED BY THE ENGINEER.
(Hatched)	COMBINATION CURB & GUTTER, SIDEWALK & DRIVEWAY TO BE REMOVED AND REPLACED
(Hatched)	BITUMINOUS SURFACE REMOVAL
(Hatched)	BITUMINOUS SURFACE REMOVAL, BUTT JOINT
(Hatched)	P.C.C. SURFACE REMOVAL
(Hatched)	20' CURB & GUTTER TO BE REMOVED & REPLACED

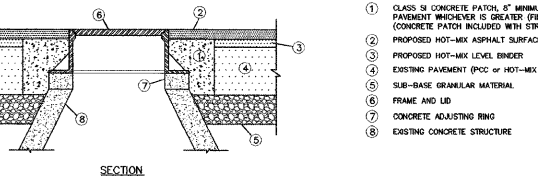
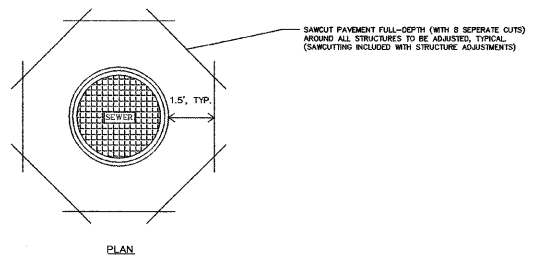
ABBREVIATIONS			
P. C. C.	PORTLAND CEMENT CONCRETE	E	EXTERNAL DISTANCE
F. F.	FACE TO FACE OF CURB	P. C.	POINT OF CURVATURE
B. B.	BACK TO BACK OF CURB	P. I.	POINT OF INTERSECTION
Q. F.	CENTERLINE TO FACE OF CURB	P. T.	POINT OF TANGENCY
Δ	CENTRAL ANGLE	P. C. C.	POINT OF COMPOUND CURVE
T	TANGENT LENGTH	P. R. C.	POINT OF REVERSE CURVE
R	RADIUS OF CURVE	V. C.	VERTICAL CURVE
P.V.M.T.	PAVEMENT	C. I. P.	CAST IRON PIPE
BIT.	BITUMINOUS	D. I. P.	DUCTILE IRON PIPE
B. M.	BENCH MARK	R. O. W.	RIGHT OF WAY
INV.	INVERT	F. L.	FLOW LINE
ELEV.	ELEVATION	STA.	STATION
M. F. T.	MOTOR FUEL TAX	I. P.	IRON PIPE
P. L.	PROPERTY LINE		

\* A OR R ADJACENT TO THE SYMBOL DENOTES ADJUSTMENT OR RECONSTRUCTION RESPECTIVELY

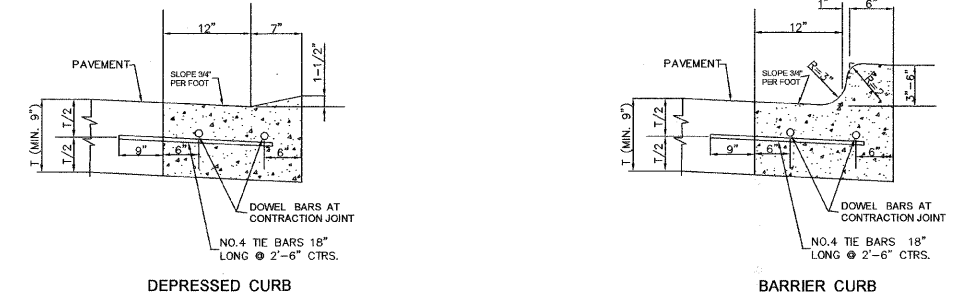
**STRUCTURE ADJUSTMENT DETAIL (IN GUTTER)**



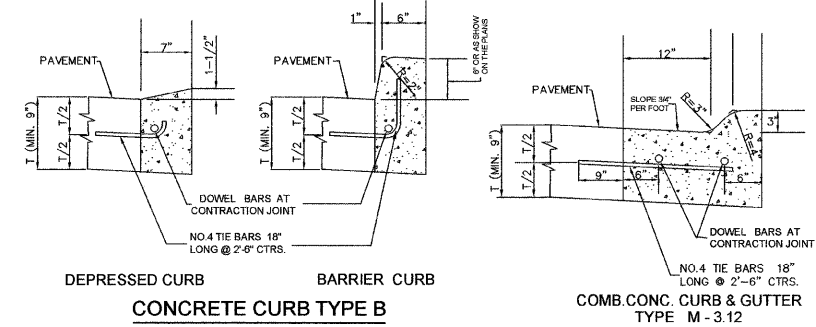
**STRUCTURE ADJUSTMENT DETAIL**



- LEGEND**
- CLASS 58 CONCRETE PATCH, 8" MINIMUM OR MATCH EXISTING PAVEMENT (WHICHEVER IS GREATER) (FINISH FLUSH W/ BINDER) (CONCRETE PATCH INCLUDED WITH STRUCTURE ADJUSTMENTS)
  - PROPOSED HOT-MIX ASPHALT SURFACE COURSE, 1.5"
  - PROPOSED HOT-MIX LEVEL BINDER
  - EXISTING PAVEMENT (PCC OR HOT-MIX ASPHALT)
  - SUB-BASE GRANULAR MATERIAL
  - FRAME AND LID
  - CONCRETE ADJUSTING RING
  - EXISTING CONCRETE STRUCTURE

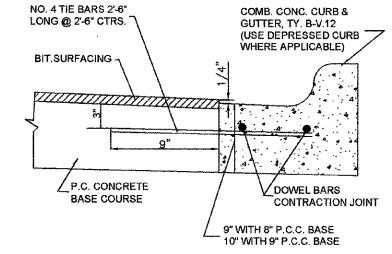


**COMBINATION CONCRETE CURB & GUTTER TYPE B-V.12**



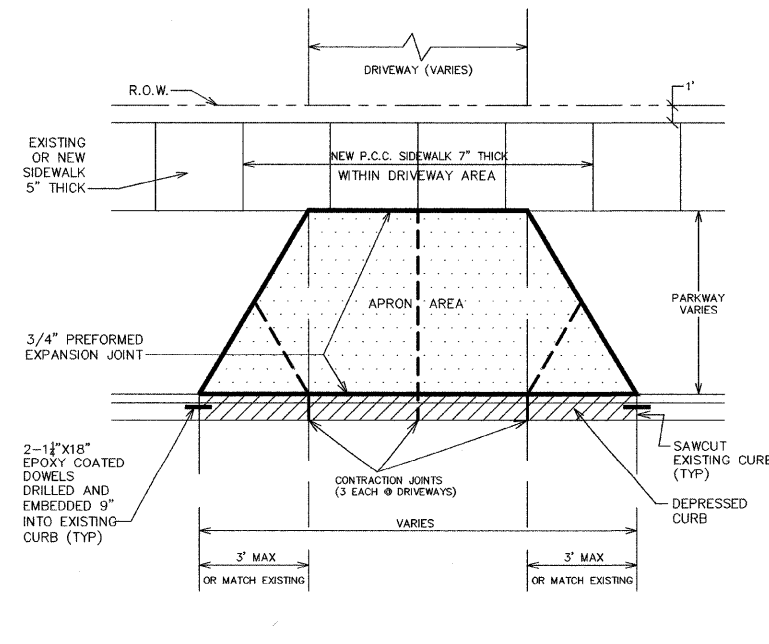
**CONCRETE CURB TYPE B**

**COMB. CONC. CURB & GUTTER TYPE M-3.12**



**COMBINATION CONCRETE CURB & GUTTER TYPE B-V.12 ADJACENT TO P.C. CONC. BASE COURSE & BIT. SURFACING**

**NOTE:**  
WHEN TIE BARS ARE PLACED IN EXISTING BASE, THE COST OF FURNISHING, DRILLING, SETTING TIE BARS, MORTARING AND ETC. SHALL BE INCLUDED IN THE UNIT PRICE BID PER LINEAL FOOT FOR THE TYPE OF CONC. CURB OR COMBINATION CONCRETE CURB AND GUTTER CONSTRUCTED.



**DRIVEWAY RETURN STANDARD**

**GENERAL NOTES:**

- "T" = THICKNESS OF PAVEMENT
- DEPRESSED CURB - THE TOP OF CURB SHALL BE DEPRESSED WHERE THE CURB AND GUTTER IS CONSTRUCTED ACROSS ALLEY AND PRIVATE DRIVES OR WHERE DIRECTED BY THE ENGINEER.
- CONTRACTION JOINTS - CONTRACTION JOINTS OF A TYPE SIMILAR TO THAT USED IN THE ADJACENT PAVEMENT SHALL BE INSTALLED IN THE CURB AND GUTTER IN PROLONGATION WITH THE JOINTS IN THE PAVEMENT. THE DETAILS OF THE TRANSVERSE JOINTS SHALL BE APPROVED BY THE ENGINEER. THE COST OF THE CONTRACTION JOINTS INCLUDING DOWEL BARS AND THE COST OF FURNISHING AND INSTALLING TIE BARS SHALL BE INCLUDED IN THE UNIT PRICE BID PER LINEAL FOOT FOR CONCRETE CURB OR COMBINATION CONCRETE CURB & GUTTER.

FILE NAME =	USER NAME	DESIGNED M.L.ZIEMBA	REVISED
		DRAWN M.L.ZIEMBA	REVISED
		CHECKED E.P.COOK	REVISED
		DATE JUNE 2009	REVISED

**VILLAGE OF SKOKIE**

**MAIN STREET CONSTRUCTION DETAILS**

SCALE: NONE	SHEET NO. 8 OF 17	STA. # TO STA. #	F.A.U. 1329	SECTION 09-00282-00-RS	COUNTY COOK	TOTAL SHEETS 17	SHEET NO. 8
			CONTRACT NO. 63281				